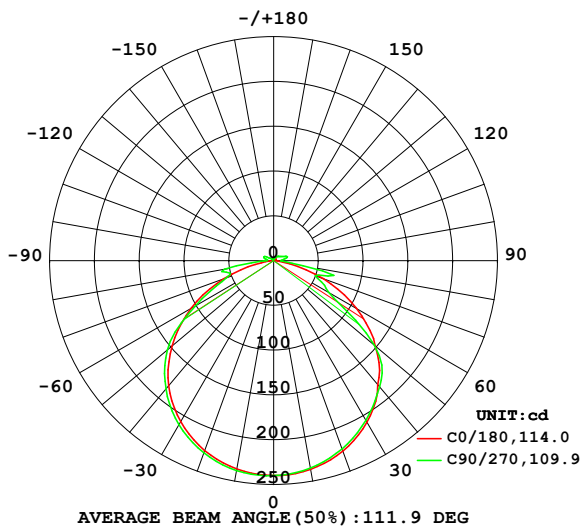


LUMINAIRE PHOTOMETRIC TEST REPORT

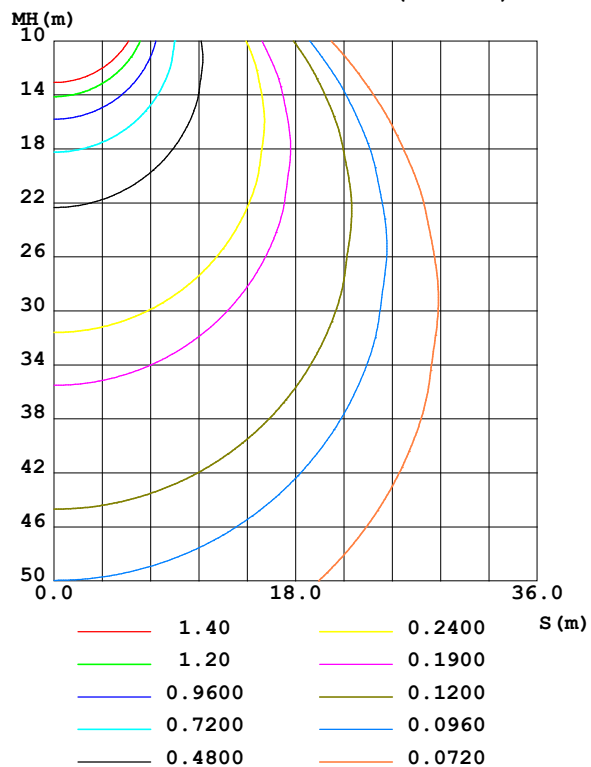
NAME: LY80-S3030W35-W24-4.8W	TYPE: 80D 3030 24V 10MM	WEIGHT:
SPEC.:	DIM.:	SERIAL No.:
MFR.:	SUR.: 0.012*1	Shielding Angle:

DATA OF LAMP		PHOTOMETRIC DATA				Eff: 163.91 lm/W
MODEL	3500K RA80 4.8W	I _{max} (cd)	240.2	S/MH(C0/180)	1.29	
NOMINAL POWER(W)	4.8	LOR(%)	100.0	S/MH(C90/270)	1.31	
RATED VOLTAGE(V)	24	TOTAL FLUX(lm)	723.87	<input type="checkbox"/> UP,DN(C0-180)	2.7,46.6	
NOMINAL FLUX(lm)	9.04837	CIE CLASS	DIRECT	<input type="checkbox"/> UP,DN(C180-360)	1.8,48.9	
LAMPS INSIDE	80	<input type="checkbox"/> up (%)	4.5	CIBSE SHR NOM	1.50	
TEST VOLTAGE(V)	24	<input type="checkbox"/> down (%)	95.5	CIBSE SHR MAX	1.50	

LUMINOUS INTENSITY DISTRIBUTION DIAGRAM



C0 PLANE ISOLUX DIAGRAM (UNIT:lx)



C Range: 0 - 360DEG
C Interval: 22.5DEG
Test Speed: HIGH
Temperature:25.3DEG
Operators:
Test Date:2022-06-18

☐ Range: 0 - 180DEG
☐ Interval: 2.0DEG
Test System:EVERFINE GO-2000B_V1 SYSTEM V2.00.450
Humidity:65.0%
Test Distance:5.749m [K=1.0000]
Remarks:

ZONAL FLUX DIAGRAM

ZONAL FLUX DIAGRAM:

°	C0	C45	C90	C135	C180	C225	C270	C315	°	zone	total	%lum, lamp
10	236.6	235.6	235.2	235.6	236.3	237.6	237.9	237.6	0- 10	22.75	22.75	3.14,3.14
20	226.2	224.4	223.6	224.3	225.6	228.0	228.2	228.1	10- 20	65.57	88.32	12.2,12.2
30	208.4	206.1	205.9	206.1	207.7	210.9	211.5	211.0	20- 30	100.6	188.9	26.1,26.1
40	181.0	181.4	184.0	181.6	182.3	186.5	187.1	186.6	30- 40	123.3	312.2	43.1,43.1
50	148.2	151.1	146.6	151.7	148.1	154.3	155.2	154.2	40- 50	130.4	442.6	61.1,61.1
60	106.4	103.0	70.95	101.9	106.5	112.1	100.9	111.4	50- 60	113.6	556.3	76.8,76.8
70	59.13	37.15	49.76	37.19	59.04	51.48	56.19	50.92	60- 70	74.53	630.8	87.1,87.1
80	10.97	38.15	33.70	38.91	14.43	31.07	55.92	34.45	70- 80	43.81	674.6	93.2,93.2
90	0.2166	7.455	7.970	7.377	0.2122	7.342	8.817	7.688	80- 90	16.77	691.4	95.5,95.5
100	0.5094	12.80	12.92	12.98	0.4411	9.119	8.267	8.981	90-100	7.379	698.7	96.5,96.5
110	1.021	9.236	14.68	8.707	0.8915	7.955	11.86	9.478	100-110	8.901	707.6	97.8,97.8
120	1.557	6.686	9.622	6.001	1.387	2.409	6.944	2.610	110-120	6.060	713.7	98.6,98.6
130	2.001	5.359	7.766	4.406	1.811	1.690	2.956	1.804	120-130	3.526	717.2	99.1,99.1
140	2.358	3.815	6.293	3.058	2.168	1.985	2.040	2.090	130-140	2.446	719.7	99.4,99.4
150	2.637	3.220	4.190	2.662	2.473	2.292	2.252	2.408	140-150	1.782	721.5	99.7,99.7
160	2.897	3.030	3.297	2.871	2.769	2.587	2.570	2.703	150-160	1.276	722.7	99.8,99.8
170	3.173	3.222	3.161	3.123	3.095	2.947	2.914	3.007	160-170	0.8313	723.6	100,100
180	3.376	3.313	3.282	3.320	3.376	3.313	3.282	3.320	170-180	0.3031	723.9	100,100
DEG	LUMINOUS INTENSITY:cd									UNIT:lm		

Conical surface Flux(90deg): 390.8 lm

%lum = 54.0%

%lamp = 54.0%

Conical surface Flux(120deg): 556.26 lm

%lum = 76.8%

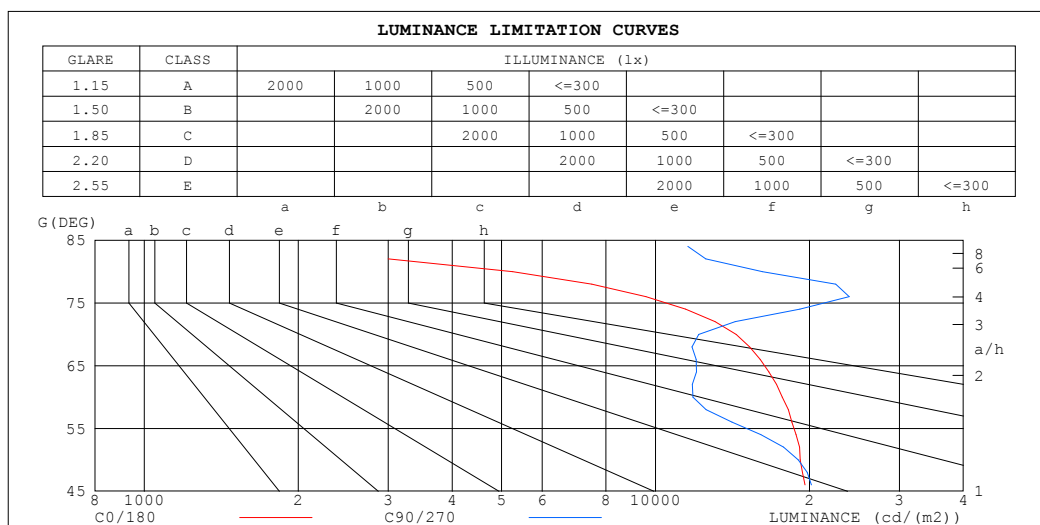
%lamp = 76.8%

C Range: 0 - 360DEG
C Interval: 22.5DEG
Test Speed: HIGH
Temperature:25.3DEG
Operators:
Test Date:2022-06-18

□ Range: 0 - 180DEG
□ Interval: 2.0DEG
Test System:EVERFINE GO-2000B_V1 SYSTEM V2.00.450
Humidity:65.0%
Test Distance:5.749m [K=1.0000]
Remarks:

LUMINANCE LIMITATION CURVES

NAME: LY80-S3030W35-W24-4.8W	TYPE: 80D 3030 24V 10MM	WEIGHT:
SPEC.:	DIM.:	SERIAL No.:
MFR.:	SUR.: 0.012*1	Shielding Angle:



LUMINANCE cd/(m2)		
G (DEG)	C0/180	C90/270
85	595	13863
80	5256	16192
75	12197	20405
70	14382	12140
65	17288	12477
60	17704	11840
55	19295	16455
50	19184	19032
45	20046	20618

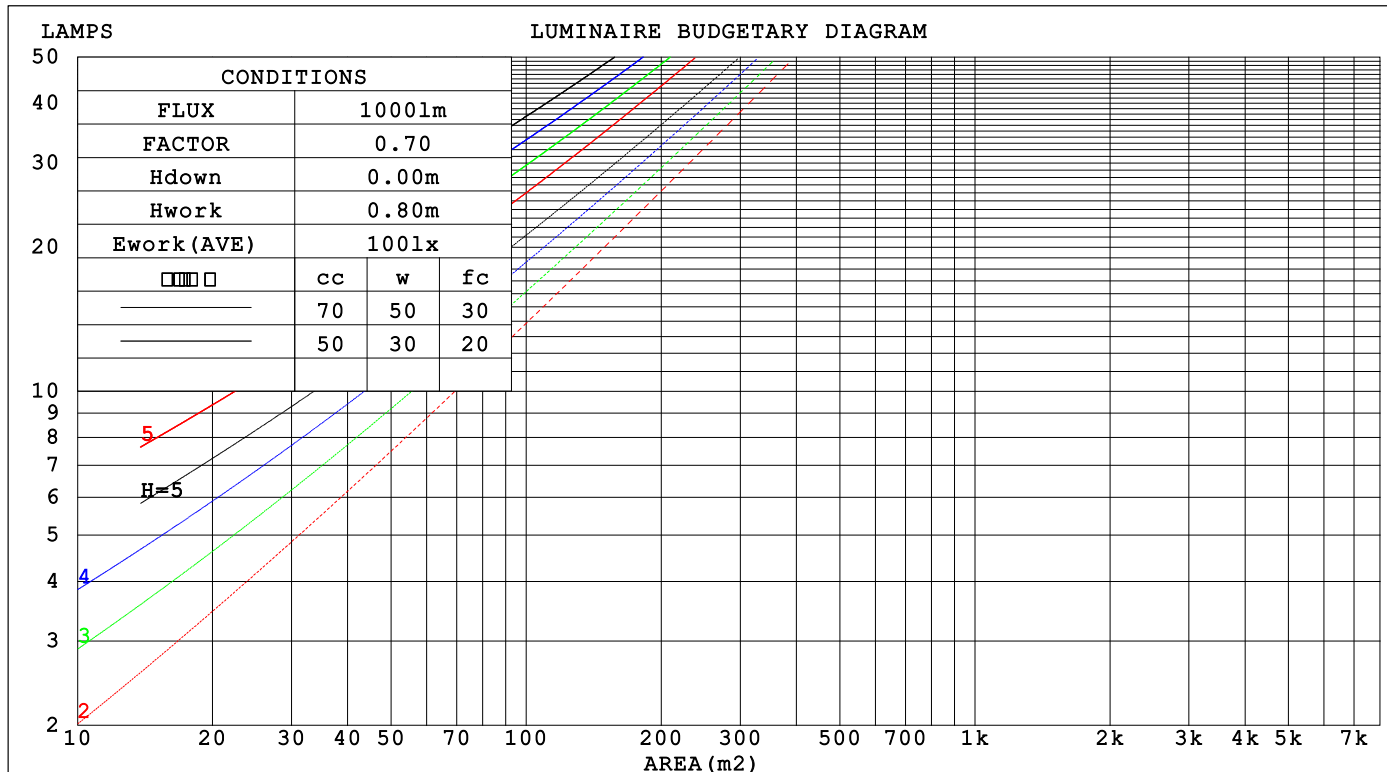
C Range: 0 - 360DEG
C Interval: 22.5DEG
Test Speed: HIGH
Temperature: 25.3DEG
Operators:
Test Date: 2022-06-18

☐ Range: 0 - 180DEG
☐ Interval: 2.0DEG
Test System: EVERFINE GO-2000B_V1 SYSTEM V2.00.450
Humidity: 65.0%
Test Distance: 5.749m [K=1.0000]
Remarks:

CU AND LUMINAIRE BUDGETARY ESTIMATE DIAGRAM

NAME: LY80-S3030W35-W24-4.8W	TYPE: 80D 3030 24V 10MM	WEIGHT:
SPEC.:	DIM.:	SERIAL No.:
MFR.:	SUR.: 0.012*1	Shielding Angle:

□cc	80%			70%			50%			30%			10%			0
□w	50%	30%	10%	50%	30%	10%	50%	30%	10%	50%	30%	10%	50%	30%	10%	0
□fc	20%			20%			20%			20%			20%			0
RCR	RCR:Room Cavity Ratio Coefficients of Utilization(CU)															
0.0	1.18	1.18	1.18	1.15	1.15	1.15	1.09	1.09	1.09	1.03	1.03	1.03	.98	.98	.98	.96
1.0	1.03	.99	.95	1.00	.96	.93	.95	.92	.89	.91	.88	.86	.86	.84	.82	.80
2.0	.90	.83	.77	.88	.81	.76	.83	.78	.74	.79	.75	.71	.76	.72	.69	.67
3.0	.79	.71	.64	.77	.70	.64	.73	.67	.62	.70	.65	.60	.67	.63	.59	.56
4.0	.70	.61	.55	.68	.60	.54	.65	.58	.53	.62	.56	.52	.60	.55	.50	.48
5.0	.63	.54	.47	.61	.53	.47	.59	.51	.46	.56	.50	.45	.54	.48	.44	.42
6.0	.56	.47	.41	.55	.47	.41	.53	.45	.40	.51	.44	.39	.49	.43	.39	.36
7.0	.51	.42	.36	.50	.42	.36	.48	.41	.35	.46	.40	.35	.44	.39	.34	.32
8.0	.46	.38	.32	.46	.38	.32	.44	.37	.32	.42	.36	.31	.41	.35	.31	.29
9.0	.43	.34	.29	.42	.34	.29	.40	.33	.28	.39	.33	.28	.38	.32	.28	.26
10.0	.39	.31	.26	.39	.31	.26	.37	.30	.26	.36	.30	.25	.35	.29	.25	.23



C Range: 0 - 360DEG
C Interval: 22.5DEG
Test Speed: HIGH
Temperature:25.3DEG
Operators:
Test Date:2022-06-18

□ Range: 0 - 180DEG
□ Interval: 2.0DEG
Test System:EVERFINE GO-2000B_V1 SYSTEM V2.00.450
Humidity:65.0%
Test Distance:5.749m [K=1.0000]
Remarks:

WEC AND CCEC

NAME: LY80-S3030W35-W24-4.8W	TYPE: 80D 3030 24V 10MM	WEIGHT:
SPEC.:	DIM.:	SERIAL No.:
MFR.:	SUR.: 0.012*1	Shielding Angle:

<input type="checkbox"/> cc	80%	70%	50%	30%	10%	0
<input type="checkbox"/> w	50% 30% 10%	50% 30% 10%	50% 30% 10%	50% 30% 10%	50% 30% 10%	0
<input type="checkbox"/> fc	20%	20%	20%	20%	20%	0
RCR	RCR:Room Cavity Ratio Wall Exitance Coefficients(WEC)					
0.0						
1.0	.307 .174 .055	.298 .170 .054	.283 .162 .052	.268 .155 .050	.255 .148 .048	
2.0	.287 .157 .048	.279 .154 .047	.265 .147 .046	.252 .142 .044	.240 .136 .043	
3.0	.265 .141 .042	.259 .138 .042	.246 .133 .041	.235 .129 .039	.224 .124 .038	
4.0	.245 .127 .037	.239 .125 .037	.228 .121 .036	.218 .117 .035	.208 .113 .034	
5.0	.227 .116 .033	.222 .114 .033	.212 .110 .032	.202 .107 .032	.194 .103 .031	
6.0	.211 .106 .030	.206 .104 .030	.197 .101 .029	.189 .098 .029	.181 .095 .028	
7.0	.196 .097 .028	.192 .096 .027	.184 .093 .027	.176 .090 .026	.169 .088 .026	
8.0	.184 .090 .025	.180 .088 .025	.172 .086 .025	.165 .084 .024	.159 .082 .024	
9.0	.172 .083 .023	.169 .082 .023	.162 .080 .023	.156 .078 .022	.150 .076 .022	
10.0	.162 .078 .022	.159 .077 .021	.153 .075 .021	.147 .073 .021	.142 .071 .020	

<input type="checkbox"/> cc	80%	70%	50%	30%	10%	0
<input type="checkbox"/> w	50% 30% 10%	50% 30% 10%	50% 30% 10%	50% 30% 10%	50% 30% 10%	0
<input type="checkbox"/> fc	20%	20%	20%	20%	20%	0
RCR	RCR:Room Cavity Ratio Ceiling Cavity Exitance Coefficients(CCEC)					
0.0	.225 .225 .225	.192 .192 .192	.131 .131 .131	.075 .075 .075	.024 .024 .024	
1.0	.215 .191 .169	.184 .164 .146	.126 .113 .101	.072 .065 .059	.023 .021 .019	
2.0	.206 .167 .133	.177 .143 .115	.121 .099 .080	.070 .058 .047	.022 .019 .015	
3.0	.198 .149 .110	.170 .129 .095	.117 .089 .067	.067 .052 .039	.022 .017 .013	
4.0	.191 .136 .094	.164 .117 .082	.113 .082 .058	.065 .048 .034	.021 .016 .011	
5.0	.184 .126 .083	.158 .109 .072	.109 .076 .051	.063 .045 .030	.020 .015 .010	
6.0	.177 .117 .075	.152 .102 .065	.105 .071 .046	.061 .042 .027	.020 .014 .009	
7.0	.170 .111 .069	.146 .096 .060	.101 .067 .043	.059 .040 .025	.019 .013 .008	
8.0	.164 .105 .064	.141 .091 .056	.097 .064 .040	.057 .038 .024	.018 .012 .008	
9.0	.158 .100 .061	.136 .087 .053	.094 .061 .038	.055 .036 .023	.018 .012 .007	
10.0	.152 .096 .058	.131 .083 .051	.091 .058 .036	.053 .035 .022	.017 .011 .007	

C Range: 0 - 360DEG
C Interval: 22.5DEG
Test Speed: HIGH
Temperature:25.3DEG
Operators:
Test Date:2022-06-18

☐ Range: 0 - 180DEG
☐ Interval: 2.0DEG
Test System:EVERFINE GO-2000B_V1 SYSTEM V2.00.450
Humidity:65.0%
Test Distance:5.749m [K=1.0000]
Remarks:

UGR(Unified Glare Rating) Table

NAME: LY80-S3030W35-W24-4.8W					TYPE: 80D 3030 24V 10MM					WEIGHT:				
SPEC.:					DIM.:					SERIAL No.:				
MFR.:					SUR.: 0.012*1					Shielding Angle:				
ceiling/cavity	0.7	0.7	0.5	0.5	0.3	0.7	0.7	0.5	0.5	0.3				
walls	0.5	0.3	0.5	0.3	0.3	0.5	0.3	0.5	0.3	0.3				
working plane	0.2	0.2	0.2	0.2	0.2	0.2	0.2	0.2	0.2	0.2				
Room dimensions					Viewed crosswise					Viewed endwise				
x = 2H y = 2H					24.0	25.4	24.3	25.7	26.0	22.8	24.3	23.2	24.6	24.9
3H					25.3	26.6	25.6	26.9	27.2	23.8	25.2	24.2	25.5	25.8
4H					25.6	26.8	25.9	27.1	27.5	25.3	26.5	25.7	26.9	27.2
6H					25.6	26.8	26.0	27.1	27.5	26.5	27.7	26.9	28.0	28.4
8H					25.6	26.7	26.0	27.1	27.5	26.6	27.7	27.0	28.1	28.5
12H					25.5	26.6	25.9	27.0	27.4	26.6	27.7	27.1	28.1	28.5
4H 2H					24.3	25.5	24.7	25.9	26.2	23.3	24.6	23.7	24.9	25.3
3H					25.7	26.8	26.1	27.2	27.6	24.4	25.5	24.9	25.9	26.3
4H					26.1	27.1	26.5	27.5	27.9	26.3	27.3	26.7	27.7	28.1
6H					26.2	27.1	26.7	27.5	28.0	27.6	28.5	28.1	29.0	29.4
8H					26.2	27.0	26.7	27.5	27.9	27.8	28.6	28.3	29.1	29.6
12H					26.1	26.9	26.6	27.4	27.9	27.9	28.7	28.4	29.1	29.6
8H 4H					26.3	27.1	26.8	27.6	28.0	26.6	27.4	27.0	27.8	28.3
6H					26.6	27.3	27.1	27.7	28.3	28.1	28.8	28.6	29.3	29.8
8H					26.6	27.3	27.2	27.8	28.3	28.3	28.9	28.8	29.4	30.0
12H					26.7	27.2	27.2	27.7	28.3	28.5	29.0	29.0	29.5	30.1
12H 4H					26.4	27.1	26.8	27.6	28.1	26.6	27.3	27.1	27.8	28.3
6H					26.7	27.3	27.3	27.8	28.4	28.1	28.8	28.7	29.3	29.8
8H					26.8	27.4	27.4	27.9	28.5	28.4	28.9	28.9	29.4	30.0
Variations with the observer position at spacings(CIE Pub.117):														
S = 1.0H					+ 0.1 / - 0.2					+ 0.1 / - 0.1				
1.5H					+ 0.3 / - 0.6					+ 0.3 / - 0.3				
2.0H					+ 0.3 / - 0.4					+ 0.3 / - 0.4				

CIE Pub.117, 723.9 lm Total Lamp Luminous Flux Correct (8log(F/F0) = -1.1)
Area: 0.012 m2

C Range: 0 - 360DEG
C Interval: 22.5DEG
Test Speed: HIGH
Temperature:25.3DEG
Operators:
Test Date:2022-06-18

☐ Range: 0 - 180DEG
☐ Interval: 2.0DEG
Test System:EVERFINE GO-2000B_V1 SYSTEM V2.00.450
Humidity:65.0%
Test Distance:5.749m [K=1.0000]
Remarks:

UTILIZATION FACTORS TABLE

NAME: LY80-S3030W35-W24-4.8W	TYPE: 80D 3030 24V 10MM	WEIGHT:
SPEC.:	DIM.:	SERIAL No.:
MFR.:	SUR.: 0.012*1	Shielding Angle:

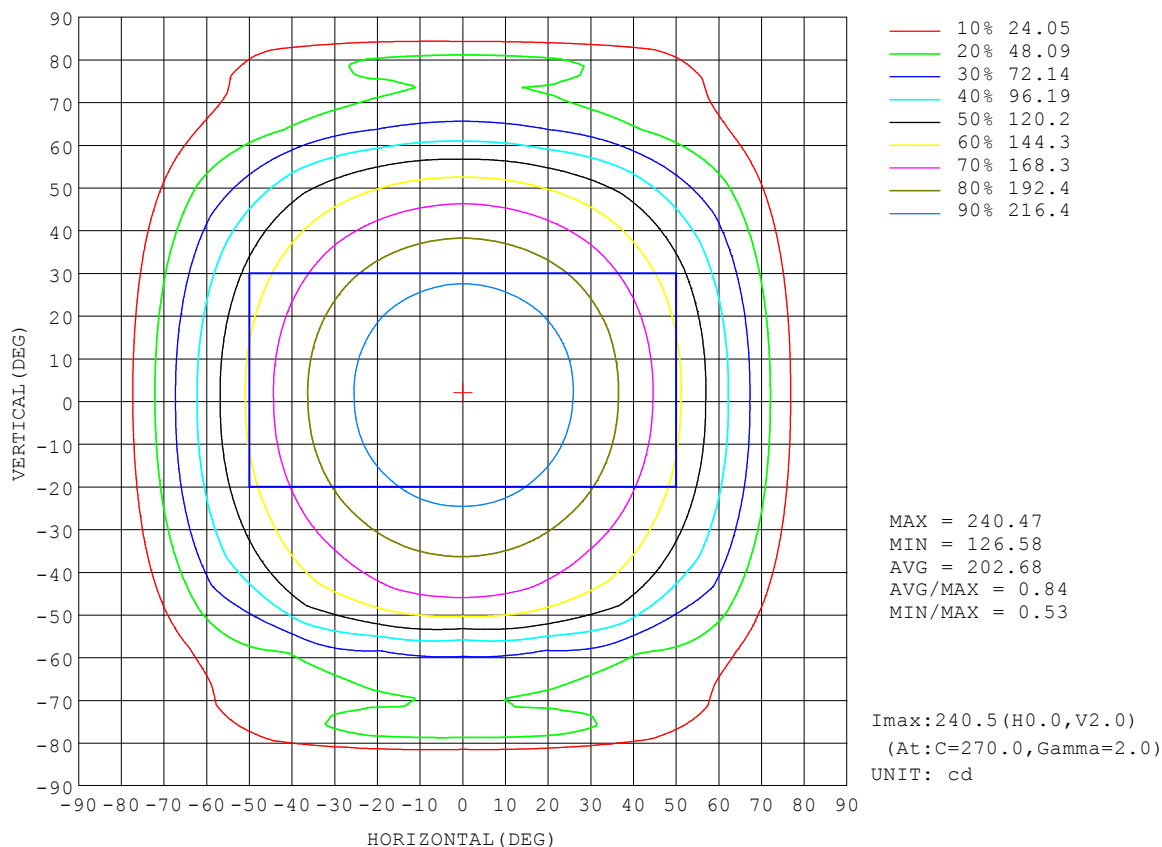
REFLECTANCE										
Ceiling	0.8	0.8	0.8	0.7	0.7	0.7	0.5	0.5	0.5	0
Walls	0.7	0.5	0.3	0.7	0.5	0.3	0.7	0.5	0.3	0
Working plane	0.2	0.2	0.2	0.2	0.2	0.2	0.2	0.2	0.2	0
ROOM INDEX	UTILIZATION FACTORS (PERCENT) $k(RI) \times RCR = 5$									
$k = 0.60$	56	45	38	55	44	37	54	44	37	31
0.80	66	55	47	65	54	47	63	53	47	40
1.00	75	64	56	74	63	56	71	64	55	48
1.25	82	71	64	80	71	64	77	69	63	55
1.50	87	77	70	85	76	69	82	74	68	60
2.00	94	85	79	92	84	78	88	81	76	67
2.50	98	90	84	95	88	82	91	85	80	71
3.00	101	94	88	98	92	87	94	89	84	75
4.00	105	99	94	102	97	93	97	93	89	79
5.00	107	102	98	104	100	96	99	96	92	82
ROOM INDEX	UF (total)									Direct
According to DIN EN 13032-2 2004			Suspended					SHRNOM = 1.25		

C Range: 0 - 360DEG
C Interval: 22.5DEG
Test Speed: HIGH
Temperature: 25.3DEG
Operators:
Test Date: 2022-06-18

☐ Range: 0 - 180DEG
☐ Interval: 2.0DEG
Test System: EVERFINE GO-2000B_V1 SYSTEM V2.00.450
Humidity: 65.0%
Test Distance: 5.749m [K=1.0000]
Remarks:

ISOCANDELA DIAGRAM

NAME: LY80-S3030W35-W24-4.8W	TYPE: 80D 3030 24V 10MM	WEIGHT:
SPEC.:	DIM.:	SERIAL No.:
MFR.:	SUR.: 0.012*1	Shielding Angle:

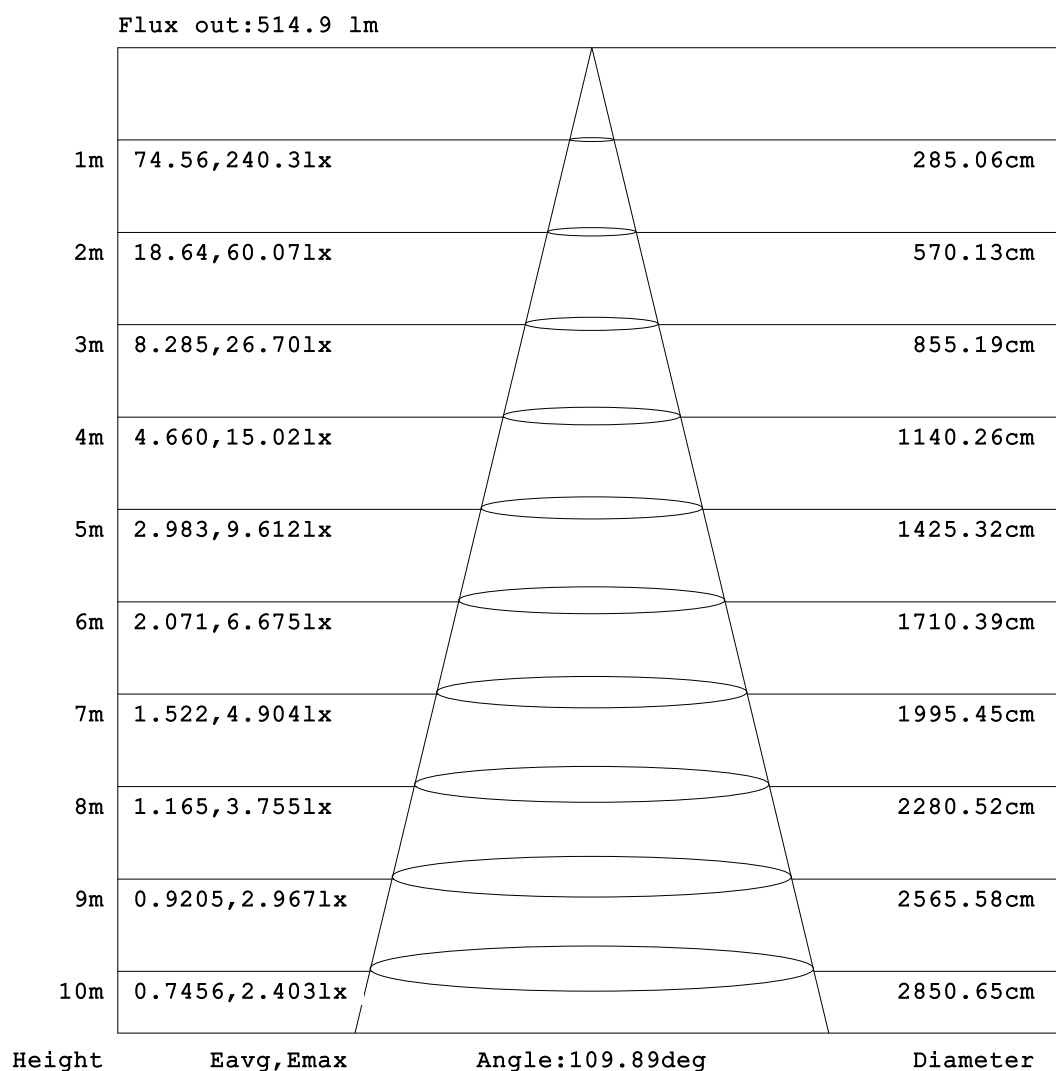


C Range: 0 - 360DEG
C Interval: 22.5DEG
Test Speed: HIGH
Temperature: 25.3DEG
Operators:
Test Date: 2022-06-18

☐ Range: 0 - 180DEG
☐ Interval: 2.0DEG
Test System: EVERFINE GO-2000B_V1 SYSTEM V2.00.450
Humidity: 65.0%
Test Distance: 5.749m [K=1.0000]
Remarks:

AAI Figure

NAME: LY80-S3030W35-W24-4.8W	TYPE: 80D 3030 24V 10MM	WEIGHT:
SPEC.:	DIM.:	SERIAL No.:
MFR.:	SUR.: 0.012*1	Shielding Angle:



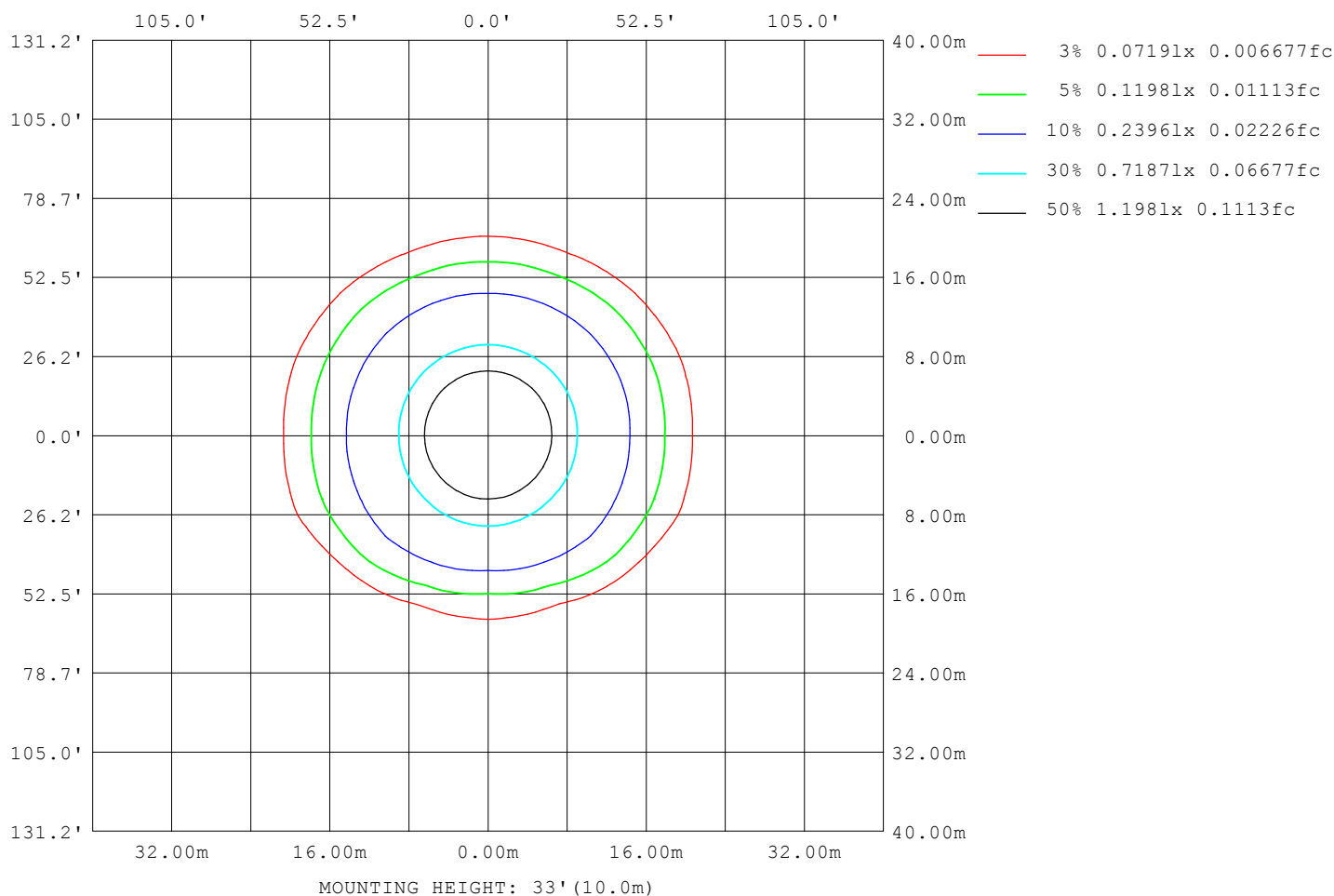
Note: The Curves indicate the illuminated area and the average illumination when the luminaire is at different distance.

C Range: 0 - 360DEG
 C Interval: 22.5DEG
 Test Speed: HIGH
 Temperature: 25.3DEG
 Operators:
 Test Date: 2022-06-18

☐ Range: 0 - 180DEG
☐ Interval: 2.0DEG
 Test System: EVERFINE GO-2000B_V1 SYSTEM V2.00.450
 Humidity: 65.0%
 Test Distance: 5.749m [K=1.0000]
 Remarks:

ISOLUX DIAGRAM

NAME: LY80-S3030W35-W24-4.8W	TYPE: 80D 3030 24V 10MM	WEIGHT:
SPEC.:	DIM.:	SERIAL No.:
MFR.:	SUR.: 0.012*1	Shielding Angle:



C Range: 0 - 360DEG
C Interval: 22.5DEG
Test Speed: HIGH
Temperature:25.3DEG
Operators:
Test Date:2022-06-18

☐ Range: 0 - 180DEG
☐ Interval: 2.0DEG
Test System:EVERFINE GO-2000B_V1 SYSTEM V2.00.450
Humidity:65.0%
Test Distance:5.749m [K=1.0000]
Remarks:

LED Avg.L Report

NAME: LY80-S3030W35-W24-4.8W	TYPE: 80D 3030 24V 10MM	WEIGHT:
SPEC.:	DIM.:	SERIAL No.:
MFR.:	SUR.: 0.012*1	Shielding Angle:

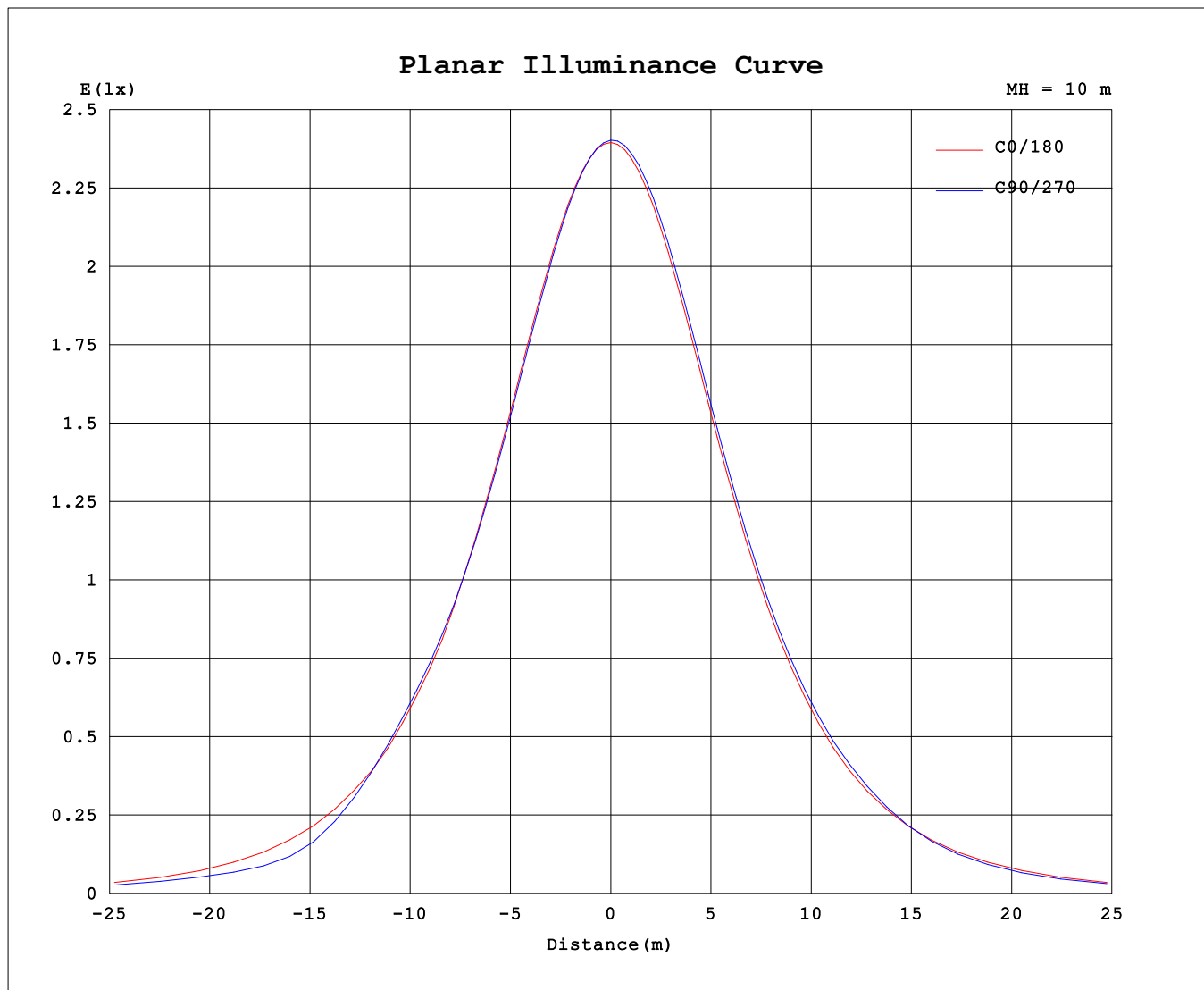
AvgL	cd/m2
L_0~180 (65) av	16390
L_0~180 (75) av	10740
L_0~180 (85) av	1741
L_90~270 (65) av	13386
L_90~270 (75) av	19329
L_90~270 (85) av	15224
L_45 (65) av	14110
L_45 (75) av	10137
L_45 (85) av	15965

Standard: GB/T 29293-2012

C Range: 0 - 360DEG
C Interval: 22.5DEG
Test Speed: HIGH
Temperature: 25.3DEG
Operators:
Test Date: 2022-06-18

☐ Range: 0 - 180DEG
☐ Interval: 2.0DEG
Test System: EVERFINE GO-2000B_V1 SYSTEM V2.00.450
Humidity: 65.0%
Test Distance: 5.749m [K=1.0000]
Remarks:

Planar Illuminance Curve



C Range: 0 - 360DEG
 C Interval: 22.5DEG
 Test Speed: HIGH
 Temperature: 25.3DEG
 Operators:
 Test Date: 2022-06-18

☐ Range: 0 - 180DEG
☐ Interval: 2.0DEG
 Test System: EVERFINE GO-2000B_V1 SYSTEM V2.00.450
 Humidity: 65.0%
 Test Distance: 5.749m [K=1.0000]
 Remarks:

LUMINOUS DISTRIBUTION INTENSITY DATA

NAME: LY80-S3030W35-W24-4.8W	TYPE: 80D 3030 24V 10MM	WEIGHT:
SPEC.:	DIM.:	SERIAL No.:
MFR.:	SUR.: 0.012*1	Shielding Angle:

Table--1

UNIT: cd

C (DEG) □ (DEG)	0	22.5	45	67.5	90	112.5	135	157.5	180	202.5	225	247.5	270	292.5	315	337.5			
0	240	240	240	240	240	240	240	240	240	240	240	240	240	240	240	240			
5	240	239	239	239	239	239	239	239	239	240	240	240	240	240	240	240			
10	237	236	236	235	235	235	236	236	236	237	238	238	238	238	238	237			
15	233	233	232	232	231	232	232	232	233	234	235	235	235	235	235	234			
20	226	225	224	224	224	224	224	225	226	227	228	228	228	228	228	227			
25	220	219	218	217	217	218	218	218	219	221	222	222	222	222	222	221			
30	208	207	206	206	206	206	206	207	208	209	211	211	211	211	211	210			
35	199	198	197	197	197	198	197	198	198	200	202	202	203	202	202	201			
40	181	182	181	183	184	183	182	182	182	185	186	187	187	187	187	185			
45	170	170	170	173	175	174	170	169	170	173	175	175	175	175	175	173			
50	148	149	151	152	147	153	152	148	148	151	154	155	155	154	154	153			
55	133	134	137	125	113	125	138	133	132	136	139	138	136	137	139	137			
60	106	109	103	73.6	70.9	73.9	102	108	106	110	112	103	101	102	111	111			
65	87.8	90.7	70.1	58.1	63.2	58.8	67.5	91.0	87.9	92.2	89.4	80.0	79.8	79.1	88.1	92.6			
70	59.1	60.6	37.2	45.7	49.8	46.2	37.2	59.4	59.0	62.7	51.5	53.2	56.2	53.8	50.9	62.8			
75	37.9	36.9	29.7	50.2	63.3	51.0	30.3	34.8	38.6	41.9	35.3	45.2	50.7	46.6	36.3	41.5			
80	11.0	15.4	38.2	37.6	33.7	39.4	38.9	15.4	14.4	17.3	31.1	52.6	55.9	53.5	34.5	17.6			
85	0.62	11.4	14.5	14.9	14.5	15.3	15.5	11.8	5.01	11.0	27.1	27.0	25.4	25.9	27.4	12.5			
90	0.22	4.70	7.46	7.98	7.97	7.90	7.38	4.71	0.21	4.52	7.34	8.39	8.82	8.63	7.69	4.96			
95	0.30	5.50	9.20	8.91	8.77	8.71	9.05	6.00	0.28	4.54	6.24	7.25	7.29	7.34	6.67	4.84			
100	0.51	5.12	12.8	13.3	12.9	13.3	13.0	5.48	0.44	4.15	9.12	8.43	8.27	8.59	8.98	5.35			
105	0.70	4.44	13.2	15.5	15.6	15.6	13.3	4.54	0.60	2.34	9.27	10.2	10.1	10.5	10.4	2.93			
110	1.02	3.72	9.24	13.7	14.7	13.5	8.71	3.65	0.89	1.00	7.95	11.6	11.9	11.9	9.48	1.10			
115	1.24	3.39	7.71	10.9	11.9	10.8	7.24	3.41	1.09	1.03	4.34	9.24	11.5	11.0	5.09	1.08			
120	1.56	2.98	6.69	8.85	9.62	8.58	6.00	2.70	1.39	1.26	2.41	5.01	6.94	5.61	2.61	1.32			
125	1.75	2.60	6.26	8.07	8.73	7.84	5.31	2.23	1.57	1.44	1.79	3.84	4.94	4.15	1.94	1.50			
130	2.00	2.44	5.36	7.18	7.77	6.96	4.41	2.01	1.81	1.70	1.69	2.29	2.96	2.42	1.80	1.75			
135	2.15	2.50	4.74	6.65	7.20	5.91	3.85	2.16	1.96	1.84	1.78	2.04	2.00	2.12	1.90	1.91			
140	2.36	2.54	3.81	5.67	6.29	4.74	3.06	2.34	2.17	2.05	1.99	2.00	2.04	2.07	2.09	2.13			
145	2.48	2.60	3.34	4.99	5.62	4.07	2.62	2.47	2.30	2.17	2.11	2.11	2.09	2.16	2.22	2.27			
150	2.64	2.77	3.22	3.75	4.19	2.93	2.66	2.63	2.47	2.35	2.29	2.29	2.25	2.33	2.41	2.46			
155	2.75	2.87	3.12	3.43	3.55	2.82	2.74	2.73	2.58	2.47	2.41	2.41	2.38	2.44	2.53	2.58			
160	2.90	3.01	3.03	3.19	3.30	2.92	2.87	2.89	2.77	2.67	2.59	2.58	2.57	2.61	2.70	2.77			
165	3.00	3.10	3.11	3.08	3.14	2.99	2.96	2.99	2.89	2.80	2.73	2.70	2.71	2.72	2.81	2.90			
170	3.17	3.23	3.22	3.19	3.16	3.10	3.12	3.18	3.09	3.02	2.95	2.91	2.91	2.92	3.01	3.09			
175	3.27	3.33	3.30	3.24	3.23	3.20	3.23	3.30	3.22	3.16	3.10	3.06	3.06	3.06	3.15	3.22			
180	3.38	3.34	3.31	3.27	3.28	3.25	3.32	3.37	3.38	3.35	3.31	3.27	3.28	3.26	3.32	3.37			

C Range: 0 - 360DEG
C Interval: 22.5DEG
Test Speed: HIGH
Temperature:25.3DEG
Operators:
Test Date:2022-06-18

□ Range: 0 - 180DEG
□ Interval: 2.0DEG
Test System:EVERFINE GO-2000B_V1 SYSTEM V2.00.450
Humidity:65.0%
Test Distance:5.749m [K=1.0000]
Remarks: