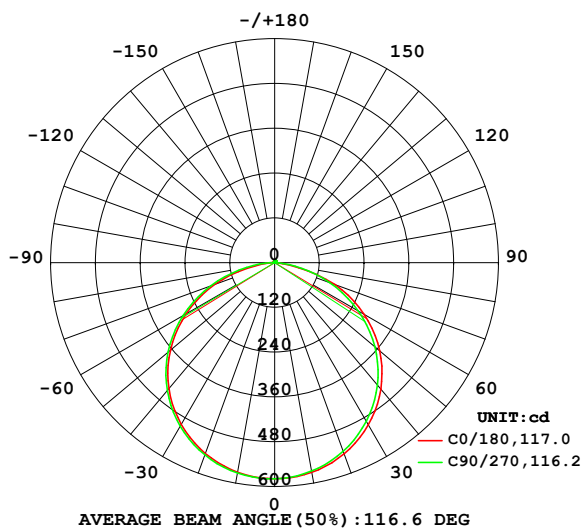


LUMINAIRE PHOTOMETRIC TEST REPORT

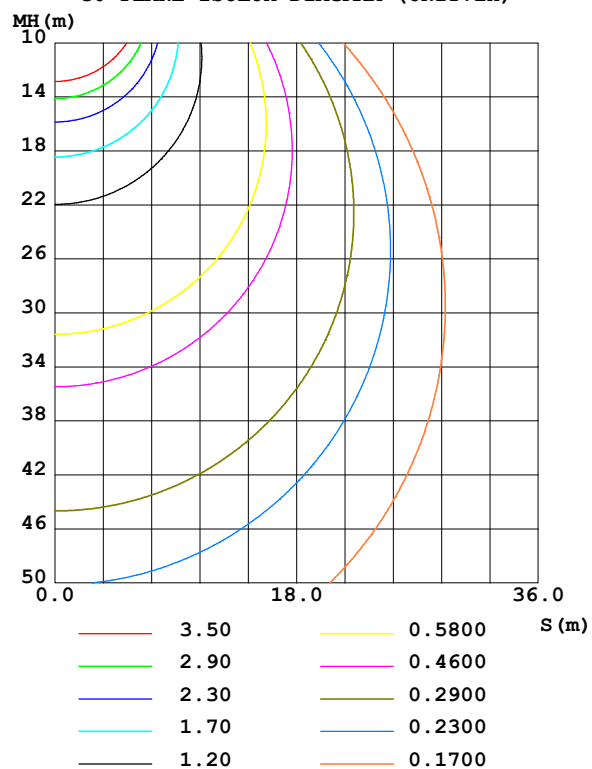
NAME: 2835开关自切色温	TYPE:	WEIGHT:
SPEC.:	DIM.:	SERIAL No.:
MFR.:	SUR.: 0.01*1	Shielding Angle:

DATA OF LAMP		PHOTOMETRIC DATA				Eff: 92.50 lm/W
MODEL	2700K+6500K RA90	Imax (cd)	579.3	S/MH(C0/180)	1.29	
NOMINAL POWER(W)	19	LOR(%)	100.0	S/MH(C90/270)	1.30	
RATED VOLTAGE(V)	24	TOTAL FLUX(lm)	1743.1	<input type="checkbox"/> UP,DN(C0-180)	0.7,48.3	
NOMINAL FLUX(lm)	10.3753	CIE CLASS	DIRECT	<input type="checkbox"/> UP,DN(C180-360)	0.6,50.4	
LAMPS INSIDE	168	<input type="checkbox"/> up (%)	1.3	CIBSE SHR NOM	1.25	
TEST VOLTAGE(V)	24	<input type="checkbox"/> down (%)	98.7	CIBSE SHR MAX	1.35	

LUMINOUS INTENSITY DISTRIBUTION DIAGRAM



C0 PLANE ISOLUX DIAGRAM (UNIT:lx)



C Range: 0 - 360DEG
 C Interval: 22.5DEG
 Test Speed: HIGH
 Temperature: 25.3DEG
 Operators:
 Test Date: 2022-06-23

☐ Range: 0 - 180DEG
☐ Interval: 2.0DEG
 Test System: EVERFINE GO-2000B_V1 SYSTEM V2.00.450
 Humidity: 65.0%
 Test Distance: 5.749m [K=1.0000]
 Remarks:

ZONAL FLUX DIAGRAM

ZONAL FLUX DIAGRAM:

°	C0	C45	C90	C135	C180	C225	C270	C315	°	□ zone	□ total	%lum, lamp
10	570.8	568.4	567.4	568.6	570.2	572.3	572.7	572.2	0- 10	54.86	54.86	3.15,3.15
20	545.1	540.2	537.7	540.4	544.0	547.7	548.1	547.7	10- 20	157.9	212.8	12.2,12.2
30	502.2	494.9	491.2	494.9	500.6	505.6	506.2	506.0	20- 30	241.7	454.4	26.1,26.1
40	442.7	433.2	428.5	433.4	440.6	446.7	447.6	447.3	30- 40	295.4	749.8	43,43
50	367.2	356.0	350.7	356.3	364.7	371.8	373.0	372.7	40- 50	311.5	1061	60.9,60.9
60	276.6	264.3	259.1	264.9	273.6	281.7	283.5	282.7	50- 60	286.1	1347	77.3,77.3
70	171.8	161.3	156.8	162.2	170.3	179.2	181.7	180.2	60- 70	220.4	1568	89.9,89.9
80	42.49	58.61	56.15	59.65	55.38	74.10	77.13	74.39	70- 80	122.9	1691	97,97
90	0.6042	2.774	3.003	1.793	0.5884	4.411	5.673	4.324	80- 90	29.22	1720	98.7,98.7
100	1.453	1.756	1.823	1.616	1.270	1.217	1.188	1.223	90-100	1.596	1722	98.8,98.8
110	2.710	2.773	2.783	2.748	2.372	2.157	2.142	2.196	100-110	2.043	1724	98.9,98.9
120	3.905	3.875	3.865	3.800	3.479	3.113	3.136	3.229	110-120	2.976	1727	99.1,99.1
130	4.881	4.839	4.807	4.716	4.438	3.996	4.062	4.178	120-130	3.590	1730	99.3,99.3
140	5.683	5.646	5.567	5.486	5.250	4.786	4.788	4.998	130-140	3.776	1734	99.5,99.5
150	6.350	6.350	6.168	6.138	5.959	5.507	5.419	5.740	140-150	3.521	1737	99.7,99.7
160	6.983	6.964	6.854	6.726	6.673	6.235	6.179	6.459	150-160	2.902	1740	99.8,99.8
170	7.638	7.549	7.471	7.361	7.454	7.106	7.029	7.225	160-170	1.969	1742	100,100
180	8.134	7.990	7.937	8.008	8.134	7.993	7.934	8.006	170-180	0.7249	1743	100,100
DEG	LUMINOUS INTENSITY:cd									UNIT:lm		

Conical surface Flux(90deg): 937.4 lm

%lum = 53.8%

%lamp = 53.8%

Conical surface Flux(120deg): 1347.4 lm

%lum = 77.3%

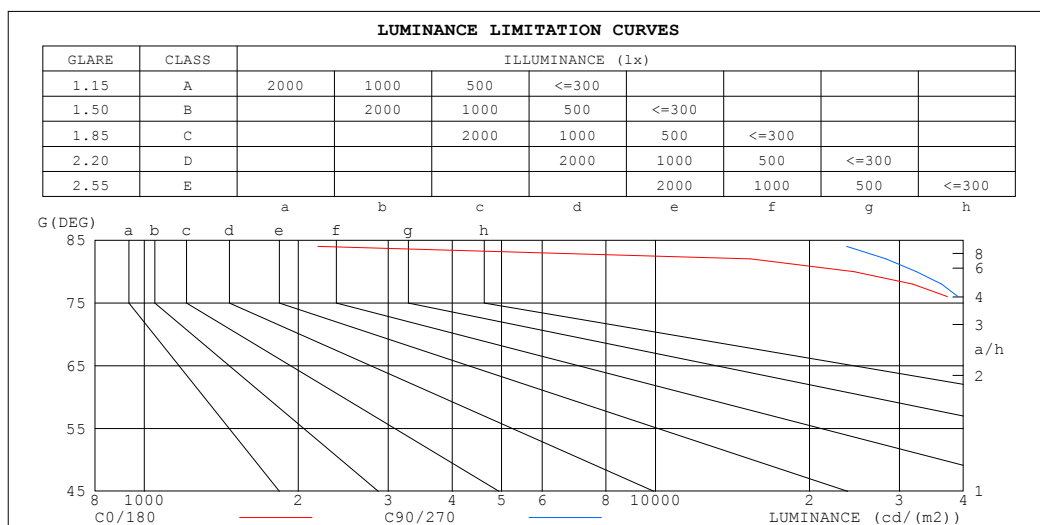
%lamp = 77.3%

C Range: 0 - 360DEG
C Interval: 22.5DEG
Test Speed: HIGH
Temperature:25.3DEG
Operators:
Test Date:2022-06-23

□ Range: 0 - 180DEG
□ Interval: 2.0DEG
Test System:EVERFINE GO-2000B_V1 SYSTEM V2.00.450
Humidity:65.0%
Test Distance:5.749m [K=1.0000]
Remarks:

LUMINANCE LIMITATION CURVES

NAME: 2835开关自切色温	TYPE:	WEIGHT:
SPEC.:	DIM.:	SERIAL No.:
MFR.:	SUR.: 0.01*1	Shielding Angle:



LUMINANCE cd/(m2)		
G (DEG)	C0/180	C90/270
85	2619	28355
80	24447	32398
75	45224	44523
70	50186	45931
65	55929	51963
60	55273	51916
55	57952	55130
50	57073	54665
45	58554	56550

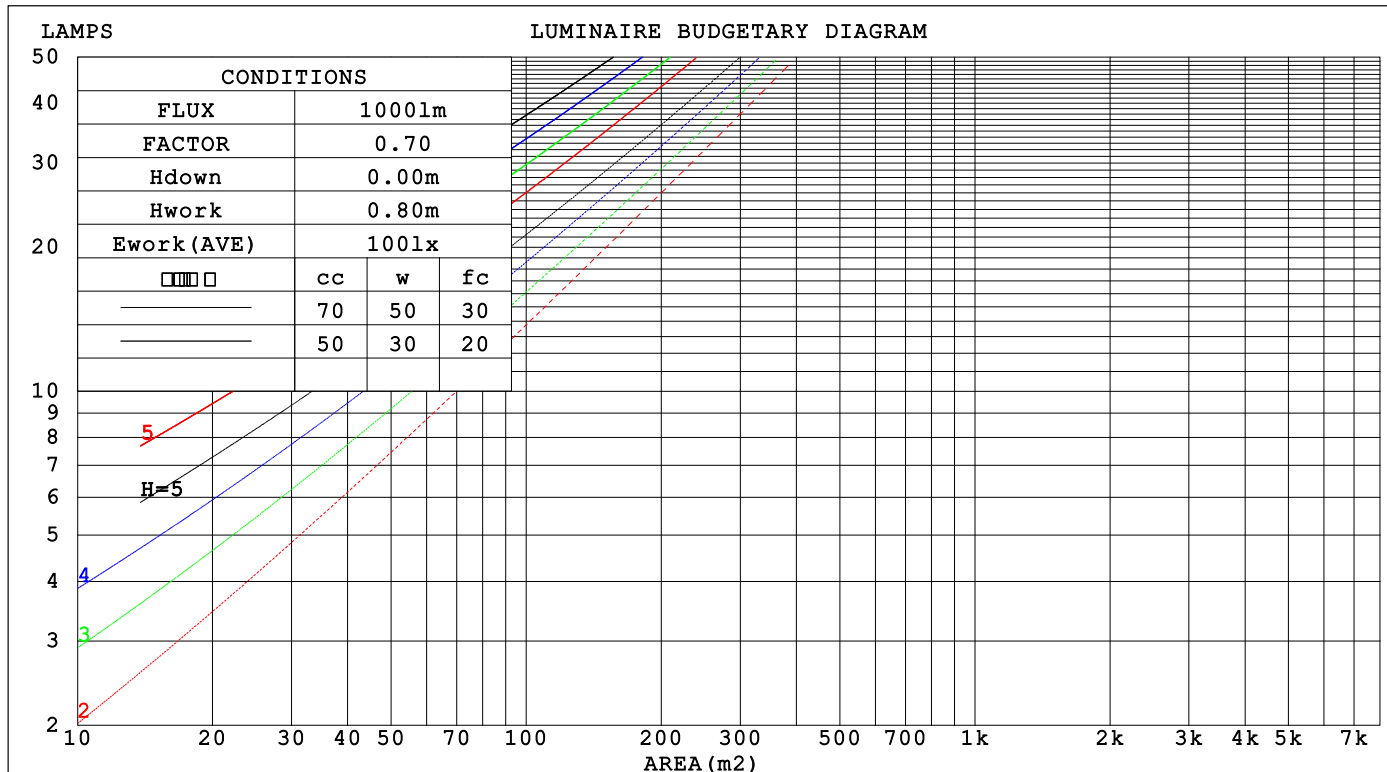
C Range: 0 - 360DEG
C Interval: 22.5DEG
Test Speed: HIGH
Temperature: 25.3DEG
Operators:
Test Date: 2022-06-23

☐ Range: 0 - 180DEG
☐ Interval: 2.0DEG
Test System: EVERFINE GO-2000B_V1 SYSTEM V2.00.450
Humidity: 65.0%
Test Distance: 5.749m [K=1.0000]
Remarks:

CU AND LUMINAIRE BUDGETARY ESTIMATE DIAGRAM

NAME: 2835开关自切色温	TYPE:	WEIGHT:
SPEC.:	DIM.:	SERIAL No.:
MFR.:	SUR.: 0.01*1	Shielding Angle:

□cc	80%			70%			50%			30%			10%			0
□w	50%	30%	10%	50%	30%	10%	50%	30%	10%	50%	30%	10%	50%	30%	10%	0
□fc	20%			20%			20%			20%			20%			0
RCR	RCR:Room Cavity Ratio Coefficients of Utilization(CU)															
0.0	1.19	1.19	1.19	1.16	1.16	1.16	1.10	1.10	1.10	1.05	1.05	1.05	1.01	1.01	1.01	.99
1.0	1.04	.99	.95	1.01	.97	.94	.97	.93	.90	.92	.90	.87	.89	.87	.85	.82
2.0	.90	.83	.77	.88	.82	.76	.84	.79	.74	.81	.76	.72	.78	.74	.71	.68
3.0	.79	.71	.64	.77	.69	.63	.74	.67	.62	.71	.65	.61	.68	.64	.60	.57
4.0	.70	.61	.54	.68	.60	.54	.66	.58	.53	.63	.57	.52	.61	.55	.51	.49
5.0	.62	.53	.46	.61	.52	.46	.59	.51	.45	.56	.50	.45	.55	.49	.44	.42
6.0	.56	.47	.40	.55	.46	.40	.53	.45	.40	.51	.44	.39	.49	.43	.39	.37
7.0	.51	.42	.35	.50	.41	.35	.48	.40	.35	.46	.40	.35	.45	.39	.34	.32
8.0	.46	.37	.32	.45	.37	.31	.44	.36	.31	.42	.36	.31	.41	.35	.31	.29
9.0	.42	.34	.28	.42	.34	.28	.40	.33	.28	.39	.33	.28	.38	.32	.28	.26
10.0	.39	.31	.26	.38	.31	.26	.37	.30	.25	.36	.30	.25	.35	.29	.25	.23



C Range: 0 - 360DEG
C Interval: 22.5DEG
Test Speed: HIGH
Temperature:25.3DEG
Operators:
Test Date:2022-06-23

□ Range: 0 - 180DEG
□ Interval: 2.0DEG
Test System:EVERFINE GO-2000B_V1 SYSTEM V2.00.450
Humidity:65.0%
Test Distance:5.749m [K=1.0000]
Remarks:

WEC AND CCEC

NAME: 2835开关自切色温	TYPE:	WEIGHT:
SPEC.:	DIM.:	SERIAL No.:
MFR.:	SUR.: 0.01*1	Shielding Angle:

<input type="checkbox"/> cc	80%	70%	50%	30%	10%	0
<input type="checkbox"/> w	50% 30% 10%	50% 30% 10%	50% 30% 10%	50% 30% 10%	50% 30% 10%	0
<input type="checkbox"/> fc	20%	20%	20%	20%	20%	0
RCR	RCR:Room Cavity Ratio					Wall Exitance Coefficients(WEC)
0.0						
1.0	.310 .176 .056	.303 .173 .055	.289 .166 .053	.276 .159 .051	.264 .153 .049	
2.0	.293 .160 .049	.286 .158 .049	.274 .152 .047	.262 .147 .046	.252 .142 .045	
3.0	.271 .144 .043	.265 .142 .043	.254 .138 .042	.244 .134 .041	.235 .130 .040	
4.0	.250 .130 .038	.245 .128 .038	.235 .125 .037	.226 .122 .037	.218 .118 .036	
5.0	.231 .118 .034	.227 .116 .034	.218 .114 .033	.210 .111 .033	.202 .108 .032	
6.0	.215 .108 .031	.211 .106 .031	.203 .104 .030	.195 .102 .030	.189 .099 .029	
7.0	.200 .099 .028	.196 .098 .028	.189 .096 .028	.182 .094 .027	.176 .092 .027	
8.0	.186 .091 .026	.183 .090 .025	.177 .088 .025	.171 .087 .025	.165 .085 .025	
9.0	.175 .084 .024	.172 .084 .023	.166 .082 .023	.161 .081 .023	.156 .079 .023	
10.0	.164 .079 .022	.161 .078 .022	.156 .077 .022	.152 .075 .021	.147 .074 .021	

<input type="checkbox"/> cc	80%	70%	50%	30%	10%	0
<input type="checkbox"/> w	50% 30% 10%	50% 30% 10%	50% 30% 10%	50% 30% 10%	50% 30% 10%	0
<input type="checkbox"/> fc	20%	20%	20%	20%	20%	0
RCR	RCR:Room Cavity Ratio					Ceiling Cavity Exitance Coefficients(CCEC)
0.0	.201 .201 .201	.171 .171 .171	.117 .117 .117	.067 .067 .067	.021 .021 .021	
1.0	.191 .166 .145	.163 .143 .124	.111 .098 .086	.064 .057 .050	.021 .018 .016	
2.0	.183 .142 .108	.156 .122 .093	.107 .085 .065	.062 .049 .038	.020 .016 .012	
3.0	.175 .125 .084	.150 .107 .073	.103 .075 .051	.060 .044 .030	.019 .014 .010	
4.0	.168 .111 .068	.144 .096 .059	.099 .067 .042	.057 .039 .025	.018 .013 .008	
5.0	.160 .101 .057	.138 .087 .050	.095 .061 .035	.055 .036 .021	.018 .012 .007	
6.0	.153 .093 .049	.132 .080 .043	.091 .056 .030	.053 .033 .018	.017 .011 .006	
7.0	.146 .086 .044	.126 .074 .038	.087 .052 .027	.050 .031 .016	.016 .010 .005	
8.0	.140 .080 .039	.120 .069 .034	.083 .049 .024	.048 .029 .014	.016 .009 .005	
9.0	.134 .075 .036	.115 .065 .031	.080 .046 .022	.046 .027 .013	.015 .009 .004	
10.0	.128 .071 .033	.110 .062 .029	.077 .043 .020	.045 .026 .012	.014 .008 .004	

C Range: 0 - 360DEG
C Interval: 22.5DEG
Test Speed: HIGH
Temperature:25.3DEG
Operators:
Test Date:2022-06-23

☐ Range: 0 - 180DEG
☐ Interval: 2.0DEG
Test System:EVERFINE GO-2000B_V1 SYSTEM V2.00.450
Humidity:65.0%
Test Distance:5.749m [K=1.0000]
Remarks:

UGR(Unified Glare Rating) Table

NAME: 2835开关自切色温					TYPE:					WEIGHT:				
SPEC.:					DIM.:					SERIAL No.:				
MFR.:					SUR.: 0.01*1					Shielding Angle:				
ceiling/cavity	0.7	0.7	0.5	0.5	0.3	0.7	0.7	0.5	0.5	0.3				
walls	0.5	0.3	0.5	0.3	0.3	0.5	0.3	0.5	0.3	0.3				
working plane	0.2	0.2	0.2	0.2	0.2	0.2	0.2	0.2	0.2	0.2				
Room dimensions					Viewed crosswise					Viewed endwise				
x = 2H y = 2H					24.9	26.4	25.2	26.6	26.9	24.7	26.2	25.0	26.4	26.6
3H					26.5	27.9	26.8	28.1	28.4	26.1	27.5	26.4	27.8	28.1
4H					27.0	28.3	27.3	28.6	28.9	26.7	28.0	27.0	28.3	28.5
6H					27.2	28.4	27.5	28.7	29.0	27.0	28.2	27.3	28.5	28.8
8H					27.2	28.4	27.5	28.7	29.0	27.0	28.2	27.4	28.5	28.9
12H					27.1	28.3	27.5	28.6	28.9	27.0	28.2	27.4	28.5	28.8
4H 2H					25.5	26.8	25.8	27.1	27.4	25.3	26.6	25.6	26.9	27.2
3H					27.2	28.4	27.6	28.7	29.0	26.9	28.1	27.3	28.4	28.7
4H					27.8	28.9	28.2	29.2	29.6	27.6	28.6	28.0	29.0	29.3
6H					28.2	29.1	28.6	29.5	29.9	28.0	28.9	28.4	29.3	29.7
8H					28.2	29.1	28.6	29.5	29.9	28.1	28.9	28.5	29.3	29.7
12H					28.2	29.0	28.6	29.4	29.8	28.1	28.9	28.5	29.3	29.7
8H 4H					28.1	28.9	28.5	29.3	29.7	27.8	28.7	28.2	29.1	29.5
6H					28.5	29.3	29.0	29.7	30.1	28.3	29.0	28.8	29.5	29.9
8H					28.6	29.3	29.1	29.7	30.2	28.5	29.1	29.0	29.6	30.0
12H					28.6	29.2	29.1	29.7	30.2	28.5	29.1	29.0	29.6	30.1
12H 4H					28.0	28.8	28.5	29.3	29.7	27.8	28.6	28.2	29.0	29.4
6H					28.6	29.2	29.0	29.7	30.1	28.4	29.0	28.8	29.4	29.9
8H					28.7	29.2	29.2	29.7	30.2	28.5	29.1	29.0	29.6	30.1
Variations with the observer position at spacings(CIE Pub.117):														
S = 1.0H					+ 0.1 / - 0.2					+ 0.2 / - 0.2				
1.5H					+ 0.2 / - 0.3					+ 0.2 / - 0.3				
2.0H					+ 0.2 / - 0.3					+ 0.2 / - 0.3				

CIE Pub.117, 1743 lm Total Lamp Luminous Flux Correct (8log(F/F0) = 1.9)
Area: 0.01 m2

C Range: 0 - 360DEG
C Interval: 22.5DEG
Test Speed: HIGH
Temperature:25.3DEG
Operators:
Test Date:2022-06-23

☐ Range: 0 - 180DEG
☐ Interval: 2.0DEG
Test System:EVERFINE GO-2000B_V1 SYSTEM V2.00.450
Humidity:65.0%
Test Distance:5.749m [K=1.0000]
Remarks:

UTILIZATION FACTORS TABLE

NAME: 2835开关自切色温	TYPE:	WEIGHT:
SPEC.:	DIM.:	SERIAL No.:
MFR.:	SUR.: 0.01*1	Shielding Angle:

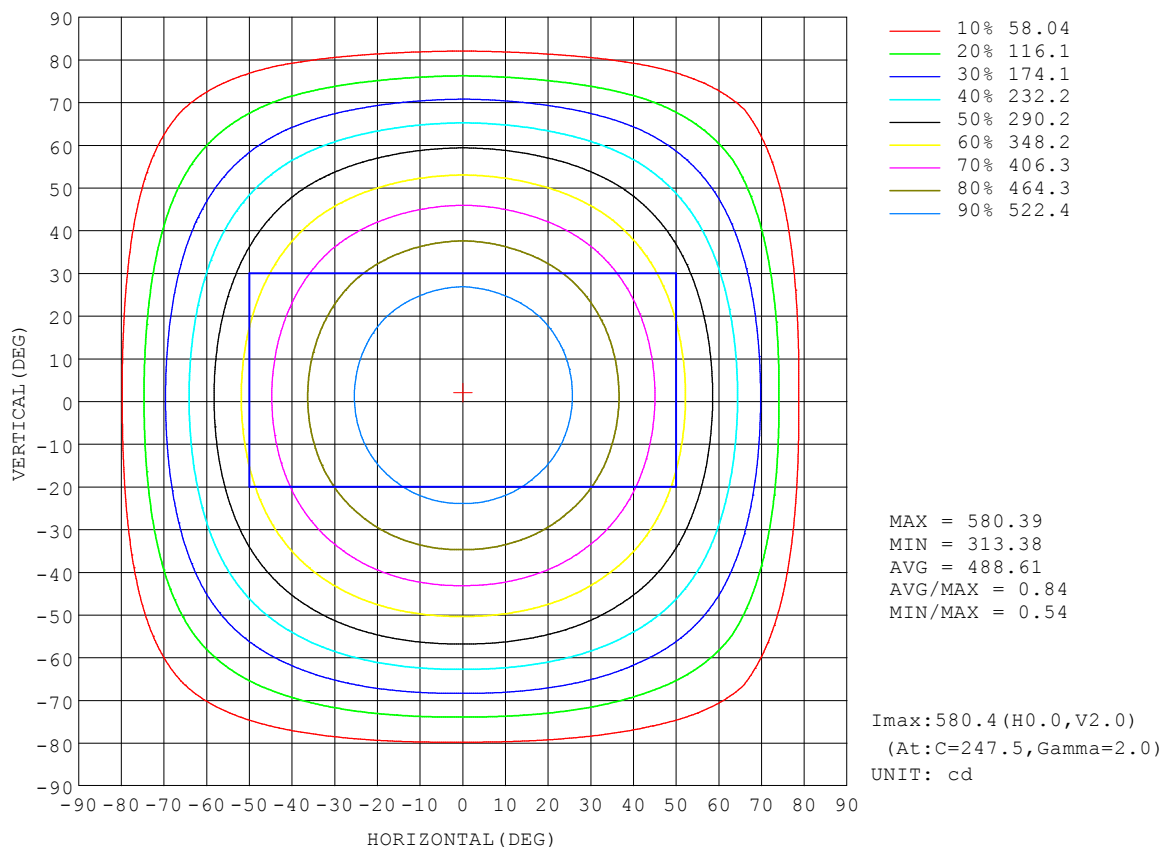
REFLECTANCE										
Ceiling	0.8	0.8	0.8	0.7	0.7	0.7	0.5	0.5	0.5	0
Walls	0.7	0.5	0.3	0.7	0.5	0.3	0.7	0.5	0.3	0
Working plane	0.2	0.2	0.2	0.2	0.2	0.2	0.2	0.2	0.2	0
ROOM INDEX	UTILIZATION FACTORS (PERCENT) $k(RI) \times RCR = 5$									
$k = 0.60$	57	45	38	56	45	38	54	44	37	31
0.80	67	55	47	66	54	47	64	54	47	40
1.00	75	64	56	74	63	56	71	65	56	48
1.25	82	72	64	81	71	64	78	69	63	55
1.50	87	77	70	86	76	70	82	74	68	61
2.00	94	86	79	92	84	78	89	82	77	68
2.50	98	90	84	96	89	83	92	86	81	73
3.00	102	95	89	99	93	88	95	90	86	77
4.00	106	100	95	103	98	94	99	95	91	82
5.00	108	103	99	106	101	98	101	97	94	85
ROOM INDEX	UF (total)									Direct
According to DIN EN 13032-2 2004			Suspended					SHRNOM = 1.25		

C Range: 0 - 360DEG
C Interval: 22.5DEG
Test Speed: HIGH
Temperature: 25.3DEG
Operators:
Test Date: 2022-06-23

☐ Range: 0 - 180DEG
☐ Interval: 2.0DEG
Test System: EVERFINE GO-2000B_V1 SYSTEM V2.00.450
Humidity: 65.0%
Test Distance: 5.749m [K=1.0000]
Remarks:

ISOCANDELA DIAGRAM

NAME: 2835开关自切色温	TYPE:	WEIGHT:
SPEC.:	DIM.:	SERIAL No.:
MFR.:	SUR.: 0.01*1	Shielding Angle:

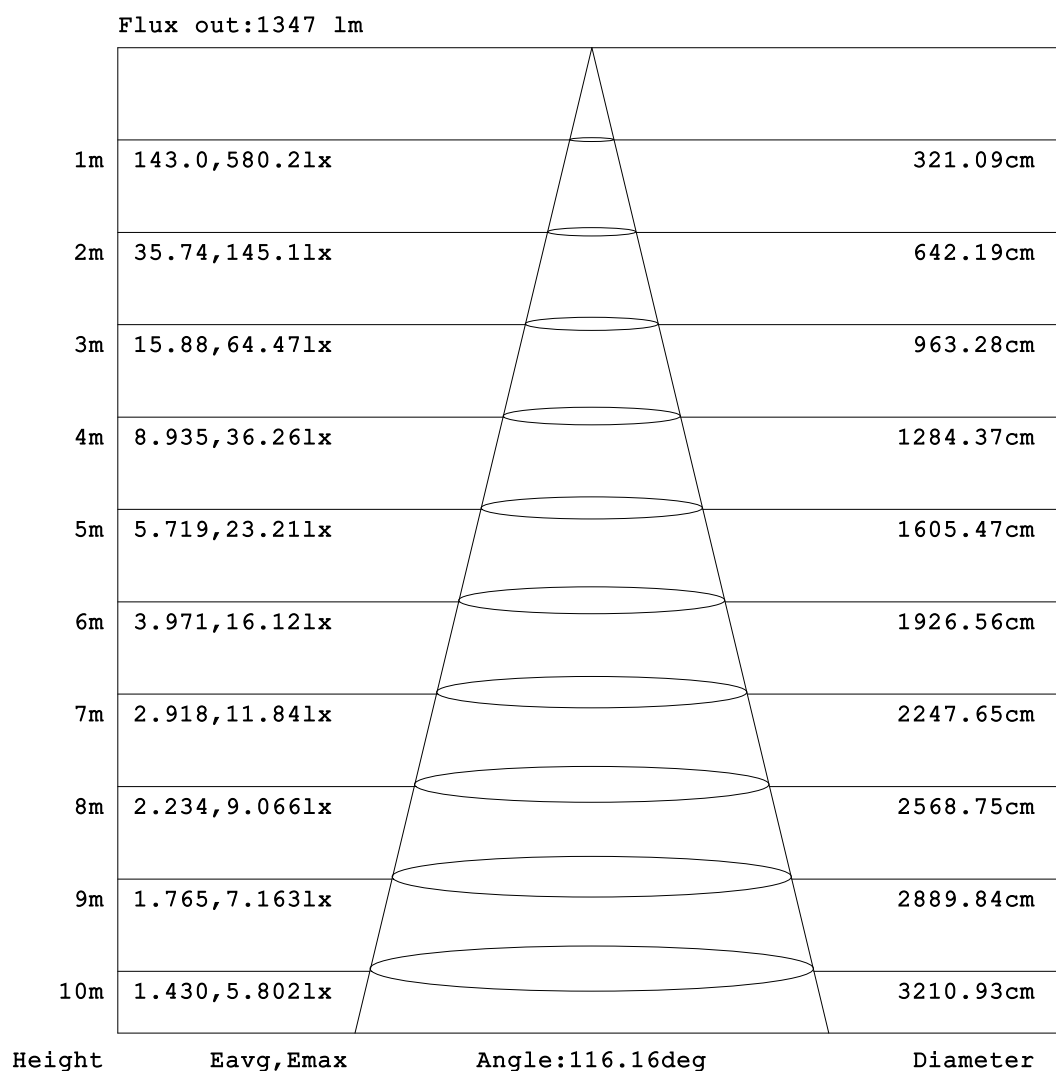


C Range: 0 - 360DEG
C Interval: 22.5DEG
Test Speed: HIGH
Temperature: 25.3DEG
Operators:
Test Date: 2022-06-23

☐ Range: 0 - 180DEG
☐ Interval: 2.0DEG
Test System: EVERFINE GO-2000B_V1 SYSTEM V2.00.450
Humidity: 65.0%
Test Distance: 5.749m [K=1.0000]
Remarks:

AAI Figure

NAME: 2835开关自切色温	TYPE:	WEIGHT:
SPEC.:	DIM.:	SERIAL No.:
MFR.:	SUR.: 0.01*1	Shielding Angle:



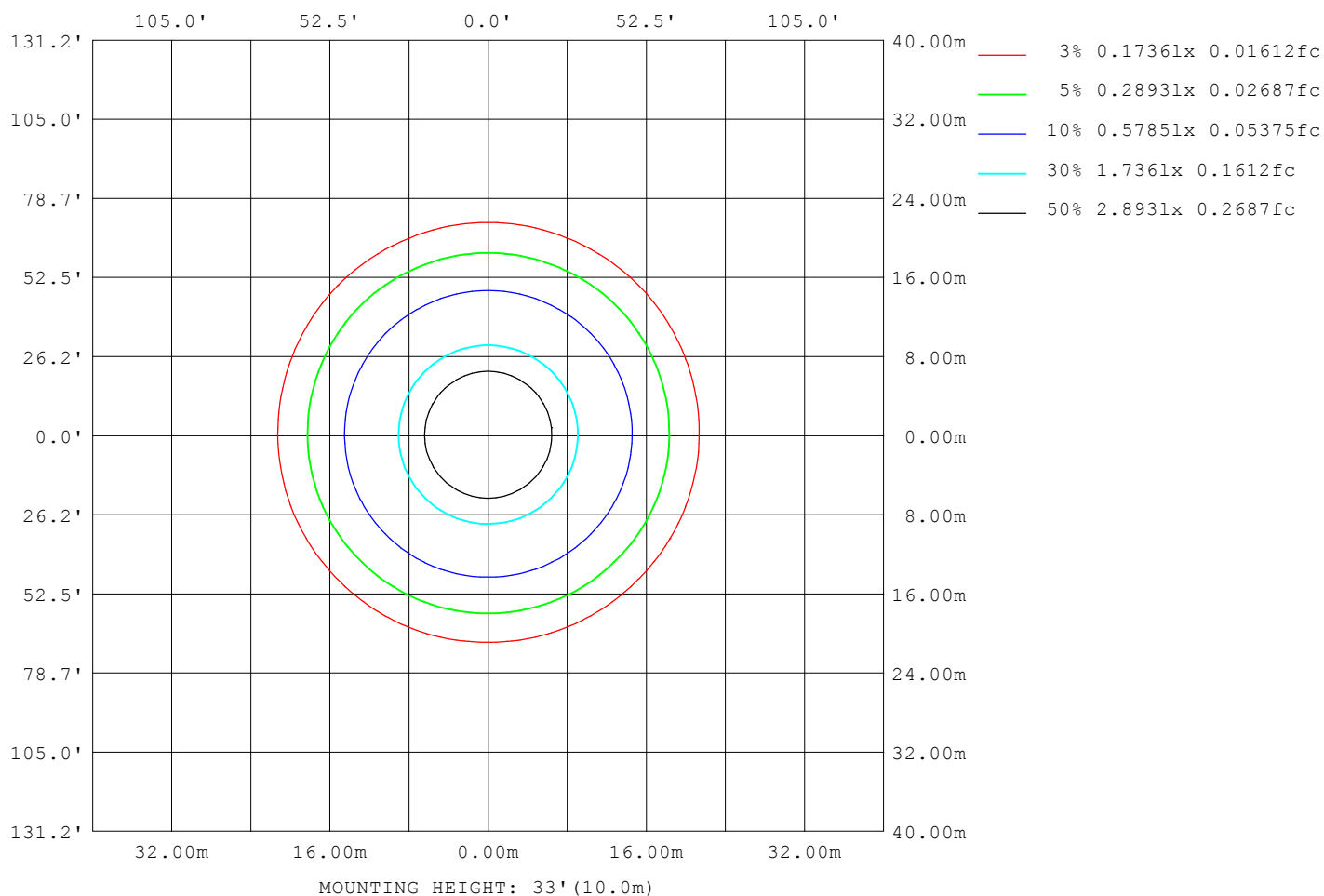
Note: The Curves indicate the illuminated area and the average illumination when the luminaire is at different distance.

C Range: 0 - 360DEG
 C Interval: 22.5DEG
 Test Speed: HIGH
 Temperature: 25.3DEG
 Operators:
 Test Date: 2022-06-23

☐ Range: 0 - 180DEG
☐ Interval: 2.0DEG
 Test System: EVERFINE GO-2000B_V1 SYSTEM V2.00.450
 Humidity: 65.0%
 Test Distance: 5.749m [K=1.0000]
 Remarks:

ISOLUX DIAGRAM

NAME: 2835开关自切色温	TYPE:	WEIGHT:
SPEC.:	DIM.:	SERIAL No.:
MFR.:	SUR.: 0.01*1	Shielding Angle:



C Range: 0 - 360DEG
C Interval: 22.5DEG
Test Speed: HIGH
Temperature:25.3DEG
Operators:
Test Date:2022-06-23

☐ Range: 0 - 180DEG
☐ Interval: 2.0DEG
Test System:EVERFINE GO-2000B_V1 SYSTEM V2.00.450
Humidity:65.0%
Test Distance:5.749m [K=1.0000]
Remarks:

LED Avg.L Report

NAME: 2835开关自切色温	TYPE:	WEIGHT:
SPEC.:	DIM.:	SERIAL No.:
MFR.:	SUR.: 0.01*1	Shielding Angle:

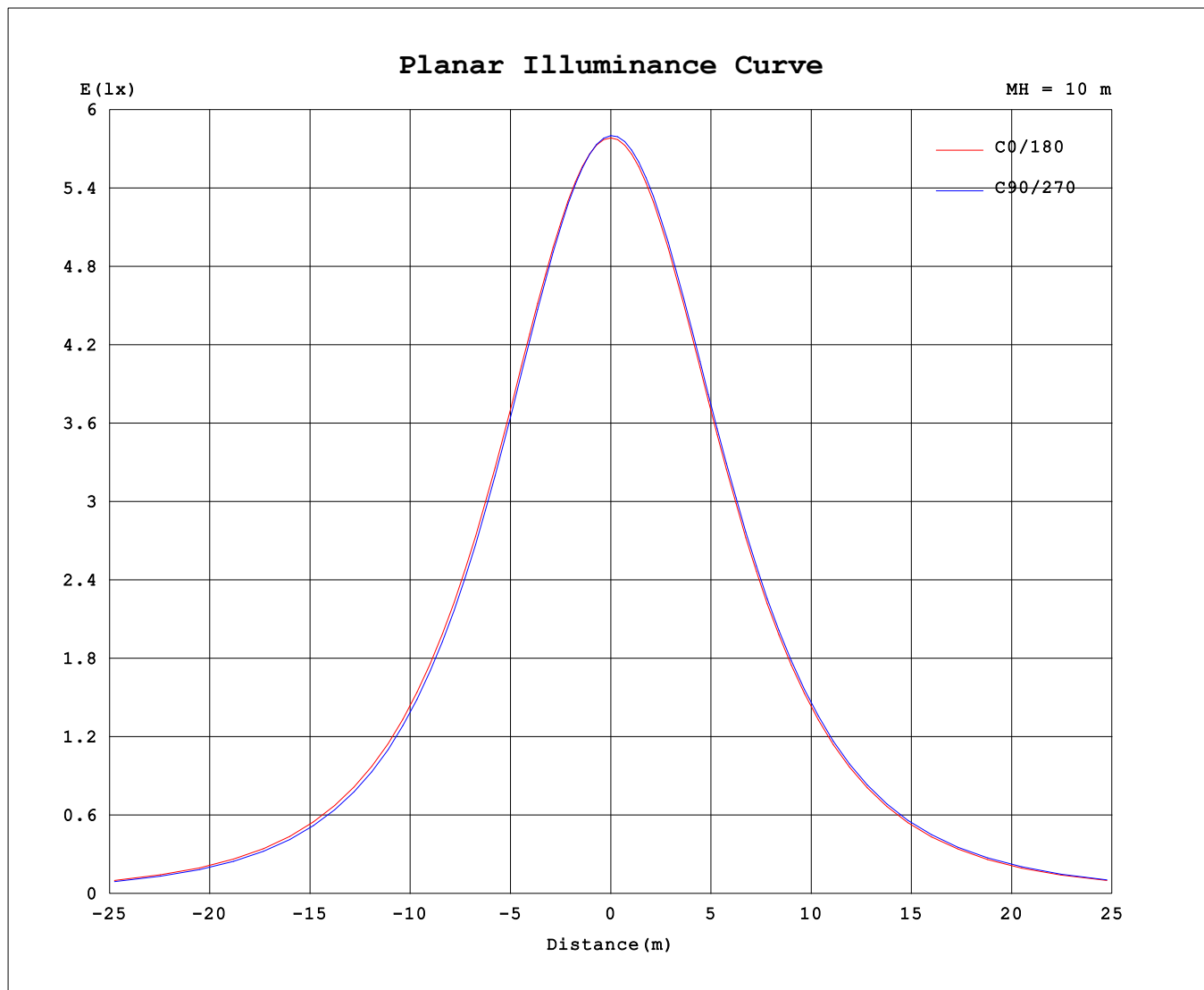
AvgL	cd/m2
L_0~180 (65) av	53172
L_0~180 (75) av	41635
L_0~180 (85) av	8795
L_90~270 (65) av	52392
L_90~270 (75) av	45080
L_90~270 (85) av	29443
L_45 (65) av	52829
L_45 (75) av	45395
L_45 (85) av	28736

Standard: GB/T 29293-2012

C Range: 0 - 360DEG
C Interval: 22.5DEG
Test Speed: HIGH
Temperature: 25.3DEG
Operators:
Test Date: 2022-06-23

☐ Range: 0 - 180DEG
☐ Interval: 2.0DEG
Test System: EVERFINE GO-2000B_V1 SYSTEM V2.00.450
Humidity: 65.0%
Test Distance: 5.749m [K=1.0000]
Remarks:

Planar Illuminance Curve



C Range: 0 - 360DEG
C Interval: 22.5DEG
Test Speed: HIGH
Temperature: 25.3DEG
Operators:
Test Date: 2022-06-23

☐ Range: 0 - 180DEG
☐ Interval: 2.0DEG
Test System: EVERFINE GO-2000B_V1 SYSTEM V2.00.450
Humidity: 65.0%
Test Distance: 5.749m [K=1.0000]
Remarks:

LUMINOUS DISTRIBUTION INTENSITY DATA

NAME: 2835开关自切色温	TYPE:	WEIGHT:
SPEC.:	DIM.:	SERIAL No.:
MFR.:	SUR.: 0.01*1	Shielding Angle:

Table--1

UNIT: cd

C (DEG) □ (DEG)	0	22.5	45	67.5	90	112.5	135	157.5	180	202.5	225	247.5	270	292.5	315	337.5			
0	579	579	579	579	579	579	579	579	579	579	579	579	579	579	579	579			
5	578	577	577	577	577	577	577	577	578	578	579	579	579	579	578	578			
10	571	570	568	568	567	568	569	569	570	571	572	573	573	572	572	572			
15	563	561	559	558	558	559	559	561	562	563	565	565	565	564	564	564			
20	545	543	540	539	538	539	540	542	544	546	548	548	548	547	548	547			
25	530	527	524	522	521	523	524	527	529	531	533	533	533	533	533	532			
30	502	499	495	493	491	493	495	498	501	503	506	506	506	506	506	504			
35	480	477	472	470	468	470	472	476	479	481	484	484	485	484	484	483			
40	443	439	433	431	428	431	433	437	441	444	447	447	448	447	447	445			
45	414	410	404	401	399	402	404	409	412	415	419	419	420	419	419	417			
50	367	362	356	353	351	354	356	361	365	368	372	372	373	372	373	370			
55	333	328	321	318	316	319	321	326	330	333	337	338	339	338	338	336			
60	277	271	264	261	259	262	265	270	274	278	282	282	284	282	283	280			
65	237	231	224	221	219	222	225	230	234	237	242	242	244	243	243	240			
70	172	169	161	159	157	160	162	167	170	174	179	180	182	180	180	177			
75	117	125	119	117	115	118	120	124	124	131	136	137	139	137	137	133			
80	42.5	63.7	58.6	57.3	56.1	58.5	59.7	60.7	55.4	69.5	74.1	76.0	77.1	75.7	74.4	71.4			
85	2.28	29.0	26.1	25.5	24.7	26.3	26.7	28.4	21.2	33.7	38.0	39.5	40.7	39.0	37.9	34.8			
90	0.60	2.49	2.77	3.08	3.00	2.85	1.79	1.49	0.59	2.48	4.41	5.23	5.67	5.03	4.32	2.88			
95	0.88	1.28	1.72	1.98	1.97	1.67	1.12	0.98	0.79	0.81	0.88	0.95	0.97	0.96	0.89	0.80			
100	1.45	1.55	1.76	1.85	1.82	1.66	1.62	1.56	1.27	1.25	1.22	1.20	1.19	1.20	1.22	1.24			
105	1.93	1.99	2.09	2.10	2.10	2.07	2.06	1.99	1.68	1.61	1.58	1.56	1.55	1.57	1.59	1.62			
110	2.71	2.68	2.77	2.78	2.78	2.76	2.75	2.68	2.37	2.20	2.16	2.14	2.14	2.17	2.20	2.23			
115	3.21	3.14	3.22	3.23	3.23	3.20	3.19	3.13	2.84	2.59	2.54	2.54	2.55	2.59	2.62	2.64			
120	3.90	3.80	3.87	3.87	3.86	3.83	3.80	3.77	3.48	3.20	3.11	3.12	3.14	3.19	3.23	3.25			
125	4.32	4.23	4.28	4.28	4.26	4.22	4.19	4.16	3.89	3.58	3.48	3.48	3.53	3.58	3.62	3.66			
130	4.88	4.82	4.84	4.83	4.81	4.78	4.72	4.71	4.44	4.14	4.00	4.01	4.06	4.13	4.18	4.25			
135	5.23	5.19	5.19	5.17	5.13	5.12	5.04	5.05	4.78	4.48	4.33	4.34	4.37	4.47	4.52	4.62			
140	5.68	5.68	5.65	5.62	5.57	5.57	5.49	5.51	5.25	4.95	4.79	4.79	4.79	4.93	5.00	5.13			
145	5.96	5.98	5.93	5.88	5.82	5.84	5.76	5.78	5.54	5.23	5.08	5.07	5.04	5.21	5.30	5.44			
150	6.35	6.39	6.35	6.24	6.17	6.21	6.14	6.17	5.96	5.66	5.51	5.49	5.42	5.60	5.74	5.89			
155	6.60	6.65	6.61	6.49	6.44	6.46	6.38	6.42	6.24	5.95	5.78	5.76	5.70	5.85	6.02	6.19			
160	6.98	7.02	6.96	6.84	6.85	6.80	6.73	6.80	6.67	6.43	6.24	6.20	6.18	6.25	6.46	6.65			
165	7.24	7.27	7.19	7.06	7.12	7.00	6.97	7.07	6.98	6.76	6.57	6.51	6.54	6.55	6.75	6.96			
170	7.64	7.64	7.55	7.42	7.47	7.35	7.36	7.50	7.45	7.27	7.11	7.02	7.03	7.03	7.22	7.44			
175	7.88	7.86	7.78	7.67	7.70	7.60	7.66	7.79	7.76	7.62	7.48	7.40	7.39	7.38	7.56	7.75			
180	8.13	8.07	7.99	7.91	7.94	7.87	8.01	8.12	8.13	8.07	7.99	7.91	7.93	7.87	8.01	8.12			

C Range: 0 - 360DEG
C Interval: 22.5DEG
Test Speed: HIGH
Temperature:25.3DEG
Operators:
Test Date:2022-06-23

□ Range: 0 - 180DEG
□ Interval: 2.0DEG
Test System:EVERFINE GO-2000B_V1 SYSTEM V2.00.450
Humidity:65.0%
Test Distance:5.749m [K=1.0000]
Remarks: