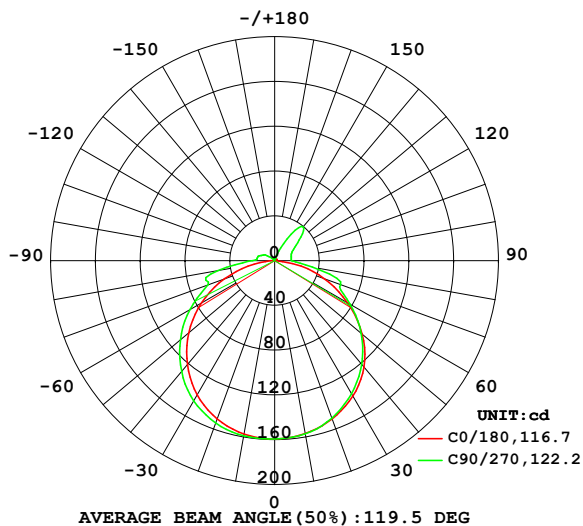


LUMINAIRE PHOTOMETRIC TEST REPORT

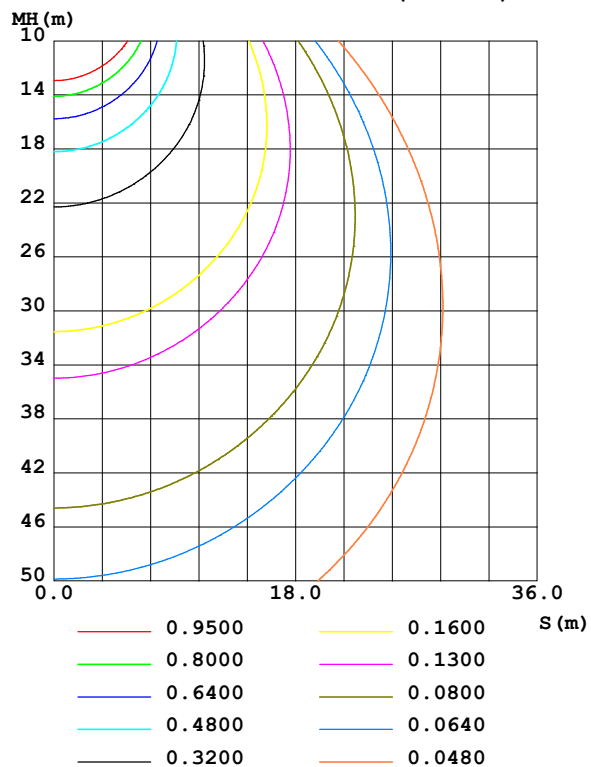
NAME: 2835 IP67	TYPE: 2835 256LED 24V	WEIGHT:
SPEC.:	DIM.:	SERIAL No.:
MFR.:	SUR.: 0.014*0.5	Shielding Angle:

DATA OF LAMP		PHOTOMETRIC DATA				Eff: 123.22 lm/W
MODEL	6500K RA90 14MM 19.2W	Imax (cd)	159.4	S/MH(C0/180)	1.29	
NOMINAL POWER(W)	4.8	LOR(%)	100.0	S/MH(C90/270)	1.35	
RATED VOLTAGE(V)	24	TOTAL FLUX(lm)	574.54	<input type="checkbox"/> UP,DN(C0-180)	6.7,43.8	
NOMINAL FLUX(lm)	8.97725	CIE CLASS	DIRECT	<input type="checkbox"/> UP,DN(C180-360)	2.8,46.7	
LAMPS INSIDE	64	<input type="checkbox"/> up (%)	9.5	CIBSE SHR NOM	1.50	
TEST VOLTAGE(V)	24	<input type="checkbox"/> down (%)	90.5	CIBSE SHR MAX	1.50	

LUMINOUS INTENSITY DISTRIBUTION DIAGRAM



C0 PLANE ISOLUX DIAGRAM (UNIT:lx)



C Range: 0 - 360DEG
C Interval: 22.5DEG
Test Speed: HIGH
Temperature:25.3DEG
Operators:
Test Date:2022-04-14

☐ Range: 0 - 180DEG
☐ Interval: 2.0DEG
Test System:EVERFINE GO-2000B_V1 SYSTEM V2.00.450
Humidity:65.0%
Test Distance:5.749m [K=1.0000]
Remarks:

ZONAL FLUX DIAGRAM

ZONAL FLUX DIAGRAM:

°	C0	C45	C90	C135	C180	C225	C270	C315	°	□ zone	□ total	%lum, lamp
10	156.9	156.9	157.2	157.2	157.3	158.3	158.8	158.0	0- 10	15.13	15.13	2.63,2.63
20	150.4	150.2	149.6	150.6	150.4	153.4	154.3	153.0	10- 20	43.83	58.96	10.3,10.3
30	139.9	138.6	137.3	138.3	138.4	143.8	144.7	143.8	20- 30	67.63	126.6	22,22
40	124.2	122.6	121.0	121.5	121.3	128.6	129.3	129.5	30- 40	83.46	210.1	36.6,36.6
50	102.2	102.2	101.0	101.0	100.2	108.2	110.0	109.7	40- 50	88.86	298.9	52,52
60	75.05	77.63	77.54	77.12	75.41	84.57	87.31	85.90	50- 60	82.87	381.8	66.4,66.4
70	47.03	51.64	62.70	51.80	47.51	58.32	63.38	59.16	60- 70	66.79	448.6	78.1,78.1
80	16.19	32.56	34.45	33.39	18.82	41.49	51.45	42.41	70- 80	48.39	497.0	86.5,86.5
90	0.2403	11.81	15.19	12.35	0.2097	15.60	19.81	15.28	80- 90	22.75	519.7	90.5,90.5
100	0.4640	11.71	15.13	12.40	0.4122	11.64	15.77	12.16	90-100	11.58	531.3	92.5,92.5
110	0.7949	12.20	15.97	12.84	0.6956	7.219	13.67	8.190	100-110	9.985	541.3	94.2,94.2
120	1.119	14.93	19.15	15.57	1.000	2.462	10.60	3.040	110-120	8.449	549.7	95.7,95.7
130	1.407	21.76	28.72	22.72	1.286	1.214	3.274	1.210	120-130	8.184	557.9	97.1,97.1
140	1.636	21.73	39.56	22.14	1.510	1.413	1.372	1.407	130-140	8.461	566.4	98.6,98.6
150	1.817	8.225	22.45	8.143	1.688	1.601	1.522	1.588	140-150	5.570	571.9	99.5,99.5
160	1.964	2.557	5.333	2.956	1.848	1.777	1.731	1.773	150-160	1.784	573.7	99.9,99.9
170	2.112	2.103	2.281	2.103	2.039	1.985	1.969	1.989	160-170	0.6224	574.3	100,100
180	2.253	2.232	2.239	2.236	2.255	2.232	2.239	2.236	170-180	0.2026	574.5	100,100
DEG	LUMINOUS INTENSITY:cd									UNIT:lm		

Conical surface Flux(90deg): 263.45 lm

%lum = 45.9%

%lamp = 45.9%

Conical surface Flux(120deg): 381.78 lm

%lum = 66.4%

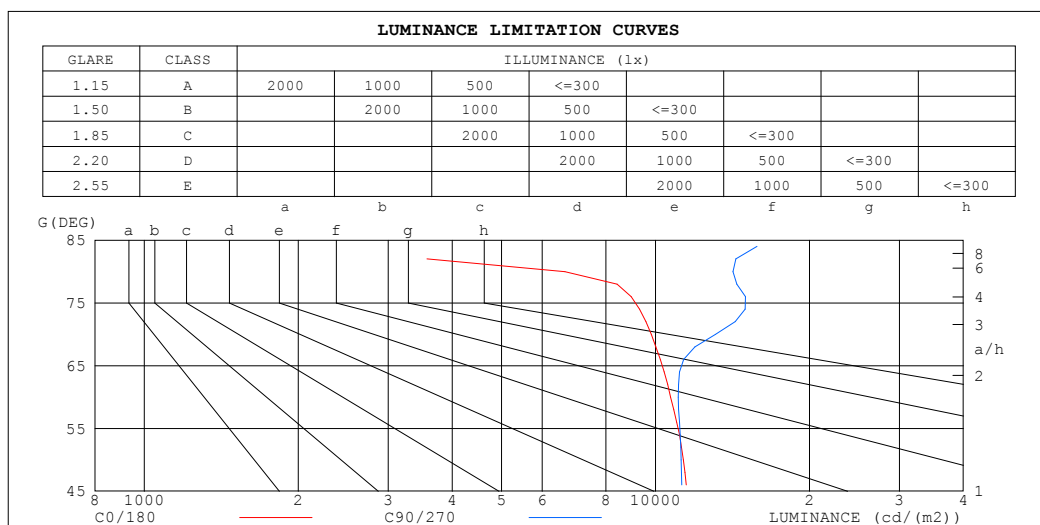
%lamp = 66.4%

C Range: 0 - 360DEG
C Interval: 22.5DEG
Test Speed: HIGH
Temperature:25.3DEG
Operators:
Test Date:2022-04-14

□ Range: 0 - 180DEG
□ Interval: 2.0DEG
Test System:EVERFINE GO-2000B_V1 SYSTEM V2.00.450
Humidity:65.0%
Test Distance:5.749m [K=1.0000]
Remarks:

LUMINANCE LIMITATION CURVES

NAME: 2835 IP67	TYPE: 2835 256LED 24V	WEIGHT:
SPEC.:	DIM.:	SERIAL No.:
MFR.:	SUR.: 0.014*0.5	Shielding Angle:



LUMINANCE cd/(m2)		
G (DEG)	C0/180	C90/270
85	473	18937
80	6651	14176
75	9907	15953
70	9809	13099
65	10779	11558
60	10707	11080
55	11409	11451
50	11341	11225
45	11725	11464

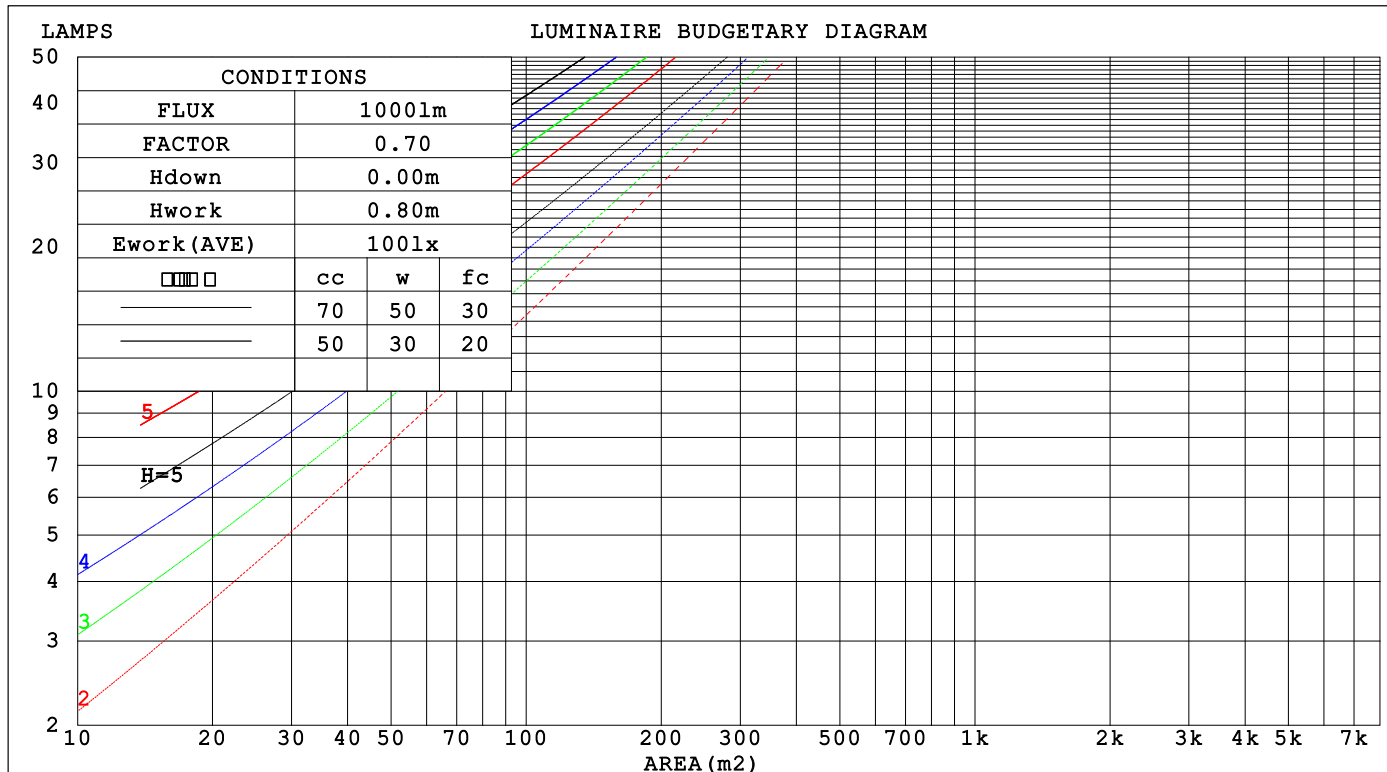
C Range: 0 - 360DEG
C Interval: 22.5DEG
Test Speed: HIGH
Temperature: 25.3DEG
Operators:
Test Date: 2022-04-14

☐ Range: 0 - 180DEG
☐ Interval: 2.0DEG
Test System: EVERFINE GO-2000B_V1 SYSTEM V2.00.450
Humidity: 65.0%
Test Distance: 5.749m [K=1.0000]
Remarks:

CU AND LUMINAIRE BUDGETARY ESTIMATE DIAGRAM

NAME: 2835 IP67	TYPE: 2835 256LED 24V	WEIGHT:
SPEC.:	DIM.:	SERIAL No.:
MFR.:	SUR.: 0.014*0.5	Shielding Angle:

□cc	80%			70%			50%			30%			10%			0
□w	50%	30%	10%	50%	30%	10%	50%	30%	10%	50%	30%	10%	50%	30%	10%	0
□fc	20%			20%			20%			20%			20%			0
RCR	RCR:Room Cavity Ratio Coefficients of Utilization(CU)															
0.0	1.17	1.17	1.17	1.13	1.13	1.13	1.06	1.06	1.06	.99	.99	.99	.93	.93	.93	.90
1.0	.00	.95	.91	.97	.92	.89	.91	.87	.84	.85	.82	.80	.80	.78	.76	.73
2.0	.86	.79	.73	.84	.77	.71	.78	.73	.68	.74	.69	.65	.69	.66	.62	.60
3.0	.75	.67	.60	.73	.65	.59	.69	.62	.56	.65	.59	.54	.61	.56	.52	.50
4.0	.66	.57	.50	.64	.56	.49	.61	.53	.48	.57	.51	.46	.54	.49	.44	.42
5.0	.59	.50	.43	.57	.49	.42	.54	.47	.41	.51	.45	.40	.48	.43	.38	.36
6.0	.53	.44	.37	.52	.43	.37	.49	.41	.36	.46	.40	.35	.44	.38	.34	.31
7.0	.48	.39	.33	.47	.38	.32	.44	.37	.31	.42	.35	.31	.40	.34	.30	.27
8.0	.44	.35	.29	.43	.34	.29	.40	.33	.28	.38	.32	.27	.37	.31	.26	.24
9.0	.40	.32	.26	.39	.31	.26	.37	.30	.25	.35	.29	.24	.34	.28	.24	.22
10.0	.37	.29	.23	.36	.28	.23	.34	.27	.23	.33	.26	.22	.31	.26	.22	.20



C Range: 0 - 360DEG
C Interval: 22.5DEG
Test Speed: HIGH
Temperature:25.3DEG
Operators:
Test Date:2022-04-14

□ Range: 0 - 180DEG
□ Interval: 2.0DEG
Test System:EVERFINE GO-2000B_V1 SYSTEM V2.00.450
Humidity:65.0%
Test Distance:5.749m [K=1.0000]
Remarks:

WEC AND CCEC

NAME: 2835 IP67	TYPE: 2835 256LED 24V	WEIGHT:
SPEC.:	DIM.:	SERIAL No.:
MFR.:	SUR.: 0.014*0.5	Shielding Angle:

<input type="checkbox"/> cc	80%	70%	50%	30%	10%	0
<input type="checkbox"/> w	50% 30% 10%	50% 30% 10%	50% 30% 10%	50% 30% 10%	50% 30% 10%	0
<input type="checkbox"/> fc	20%	20%	20%	20%	20%	0
RCR	RCR:Room Cavity Ratio Wall Exitance Coefficients(WEC)					
0.0						
1.0	.341 .194 .061	.331 .189 .060	.312 .179 .057	.295 .170 .055	.279 .162 .052	
2.0	.309 .170 .052	.300 .165 .051	.284 .158 .049	.268 .150 .047	.254 .143 .045	
3.0	.281 .150 .045	.273 .146 .044	.258 .140 .042	.244 .134 .041	.231 .128 .040	
4.0	.257 .133 .039	.249 .131 .039	.236 .125 .037	.223 .120 .036	.211 .115 .035	
5.0	.235 .120 .035	.229 .118 .034	.217 .113 .033	.205 .108 .032	.194 .104 .031	
6.0	.217 .109 .031	.211 .107 .031	.200 .103 .030	.190 .099 .029	.180 .095 .028	
7.0	.201 .100 .028	.196 .098 .028	.186 .094 .027	.176 .090 .026	.167 .087 .026	
8.0	.187 .092 .026	.183 .090 .025	.173 .087 .025	.165 .083 .024	.157 .080 .023	
9.0	.175 .085 .024	.171 .083 .023	.162 .080 .023	.154 .077 .022	.147 .075 .022	
10.0	.164 .079 .022	.160 .077 .022	.153 .075 .021	.145 .072 .021	.138 .070 .020	

<input type="checkbox"/> cc	80%	70%	50%	30%	10%	0
<input type="checkbox"/> w	50% 30% 10%	50% 30% 10%	50% 30% 10%	50% 30% 10%	50% 30% 10%	0
<input type="checkbox"/> fc	20%	20%	20%	20%	20%	0
RCR	RCR:Room Cavity Ratio Ceiling Cavity Exitance Coefficients(CCEC)					
0.0	.263 .263 .263	.225 .225 .225	.154 .154 .154	.088 .088 .088	.028 .028 .028	
1.0	.256 .229 .205	.219 .197 .177	.150 .135 .122	.086 .078 .071	.028 .025 .023	
2.0	.248 .206 .170	.213 .177 .147	.146 .122 .102	.084 .071 .060	.027 .023 .020	
3.0	.241 .189 .147	.206 .163 .127	.142 .113 .089	.082 .066 .053	.026 .021 .017	
4.0	.233 .176 .132	.200 .152 .114	.138 .106 .081	.080 .062 .048	.026 .020 .016	
5.0	.226 .166 .121	.194 .143 .105	.134 .100 .074	.077 .059 .044	.025 .019 .015	
6.0	.218 .157 .114	.188 .136 .099	.130 .095 .070	.075 .056 .042	.024 .018 .014	
7.0	.212 .151 .108	.182 .131 .094	.126 .092 .067	.073 .054 .040	.024 .018 .013	
8.0	.205 .145 .104	.176 .126 .091	.122 .088 .064	.071 .052 .038	.023 .017 .013	
9.0	.199 .140 .101	.171 .122 .088	.119 .086 .062	.069 .051 .037	.022 .017 .012	
10.0	.193 .136 .098	.166 .118 .085	.116 .083 .061	.067 .049 .036	.022 .016 .012	

C Range: 0 - 360DEG
C Interval: 22.5DEG
Test Speed: HIGH
Temperature:25.3DEG
Operators:
Test Date:2022-04-14

☐ Range: 0 - 180DEG
☐ Interval: 2.0DEG
Test System:EVERFINE GO-2000B_V1 SYSTEM V2.00.450
Humidity:65.0%
Test Distance:5.749m [K=1.0000]
Remarks:

UGR(Unified Glare Rating) Table

NAME: 2835 IP67					TYPE: 2835 256LED 24V			WEIGHT:			
SPEC.:					DIM.:			SERIAL No.:			
MFR.:					SUR.: 0.014*0.5			Shielding Angle:			
ceiling/cavity	0.7	0.7	0.5	0.5	0.3	0.7	0.7	0.5	0.5	0.3	
walls	0.5	0.3	0.5	0.3	0.3	0.5	0.3	0.5	0.3	0.3	
working plane	0.2	0.2	0.2	0.2	0.2	0.2	0.2	0.2	0.2	0.2	
Room dimensions		Viewed crosswise					Viewed endwise				
x = 2H y = 2H	22.5	23.9	22.9	24.3	24.7	22.5	24.0	22.9	24.3	24.7	
	24.0	25.3	24.4	25.7	26.1	24.6	25.9	25.0	26.3	26.7	
	24.6	25.8	25.0	26.2	26.7	25.8	27.1	26.3	27.5	28.0	
	25.0	26.2	25.5	26.6	27.1	26.7	27.9	27.1	28.3	28.8	
	25.0	26.1	25.5	26.6	27.1	27.0	28.1	27.5	28.6	29.1	
	24.9	26.0	25.4	26.5	27.0	27.2	28.3	27.7	28.8	29.3	
4H	2H	23.1	24.3	23.5	24.8	25.2	23.1	24.4	23.6	24.8	25.3
	3H	24.8	25.9	25.3	26.3	26.9	25.4	26.5	25.9	27.0	27.5
	4H	25.5	26.5	26.1	27.0	27.6	26.9	27.9	27.4	28.3	28.9
	6H	26.1	27.0	26.7	27.5	28.1	27.9	28.7	28.4	29.3	29.8
	8H	26.2	27.0	26.7	27.6	28.2	28.2	29.1	28.8	29.6	30.2
	12H	26.2	26.9	26.7	27.5	28.1	28.6	29.3	29.1	29.9	30.5
8H	4H	26.1	26.9	26.6	27.4	28.0	27.2	28.0	27.7	28.6	29.1
	6H	26.9	27.6	27.5	28.2	28.8	28.4	29.1	29.0	29.6	30.3
	8H	27.1	27.7	27.7	28.3	29.0	28.9	29.5	29.5	30.1	30.7
	12H	27.2	27.7	27.8	28.3	29.0	29.4	29.9	30.0	30.5	31.2
12H	4H	26.1	26.9	26.7	27.5	28.1	27.2	28.0	27.8	28.5	29.1
	6H	27.0	27.7	27.7	28.3	28.9	28.5	29.1	29.1	29.7	30.3
	8H	27.3	27.9	28.0	28.5	29.2	29.0	29.5	29.6	30.1	30.8
Variations with the observer position at spacings(CIE Pub.117):											
S = 1.0H	+ 0.1 / - 0.2					+ 0.1 / - 0.1					
1.5H	+ 0.2 / - 0.3					+ 0.2 / - 0.3					
2.0H	+ 0.1 / - 0.3					+ 0.2 / - 0.3					

CIE Pub.117, 574.5 lm Total Lamp Luminous Flux Correct (8log(F/F0) = -1.9)
Area: 0.014 m2

C Range: 0 - 360DEG
C Interval: 22.5DEG
Test Speed: HIGH
Temperature:25.3DEG
Operators:
Test Date:2022-04-14

☐ Range: 0 - 180DEG
☐ Interval: 2.0DEG
Test System:EVERFINE GO-2000B_V1 SYSTEM V2.00.450
Humidity:65.0%
Test Distance:5.749m [K=1.0000]
Remarks:

UTILIZATION FACTORS TABLE

NAME: 2835 IP67	TYPE: 2835 256LED 24V	WEIGHT:
SPEC.:	DIM.:	SERIAL No.:
MFR.:	SUR.: 0.014*0.5	Shielding Angle:

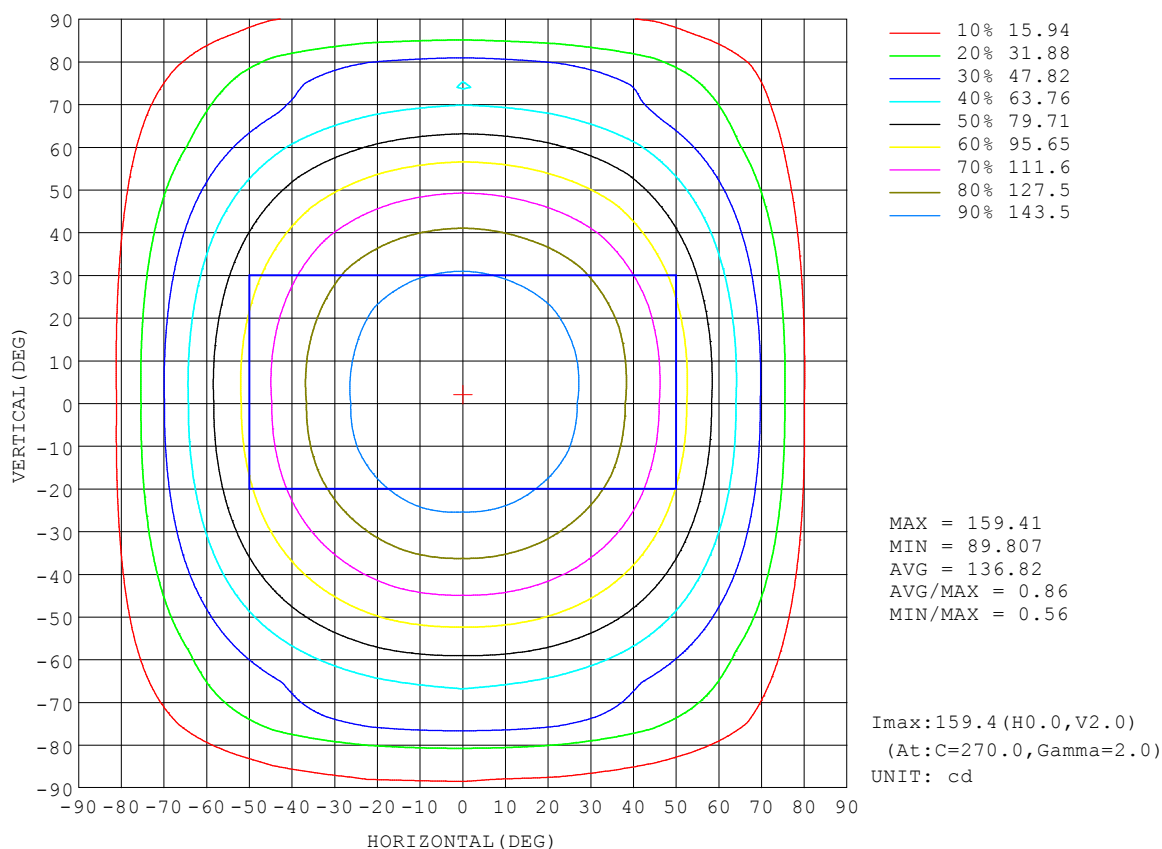
REFLECTANCE										
Ceiling	0.8	0.8	0.8	0.7	0.7	0.7	0.5	0.5	0.5	0
Walls	0.7	0.5	0.3	0.7	0.5	0.3	0.7	0.5	0.3	0
Working plane	0.2	0.2	0.2	0.2	0.2	0.2	0.2	0.2	0.2	0
ROOM INDEX	UTILIZATION FACTORS (PERCENT) k(RI) x RCR = 5									
k = 0.60	53	41	34	52	40	33	50	40	33	26
0.80	62	50	42	61	49	42	59	48	41	34
1.00	70	59	51	69	58	50	66	58	49	41
1.25	78	66	58	76	65	58	72	63	56	48
1.50	83	72	64	80	70	63	76	68	61	52
2.00	90	80	73	87	78	72	82	75	69	59
2.50	94	85	78	91	83	77	86	79	74	63
3.00	97	90	83	94	87	82	89	83	78	67
4.00	102	95	90	99	93	88	93	88	84	72
5.00	104	99	94	101	96	92	95	91	87	75
ROOM INDEX	UF(total)									Direct
According to DIN EN 13032-2 2004					Suspended			SHRNOM = 1.25		

C Range: 0 - 360DEG
 C Interval: 22.5DEG
 Test Speed: HIGH
 Temperature: 25.3DEG
 Operators:
 Test Date: 2022-04-14

☐ Range: 0 - 180DEG
☐ Interval: 2.0DEG
 Test System: EVERFINE GO-2000B_V1 SYSTEM V2.00.450
 Humidity: 65.0%
 Test Distance: 5.749m [K=1.0000]
 Remarks:

ISOCANDELA DIAGRAM

NAME: 2835 IP67	TYPE: 2835 256LED 24V	WEIGHT:
SPEC.:	DIM.:	SERIAL No.:
MFR.:	SUR.: 0.014*0.5	Shielding Angle:

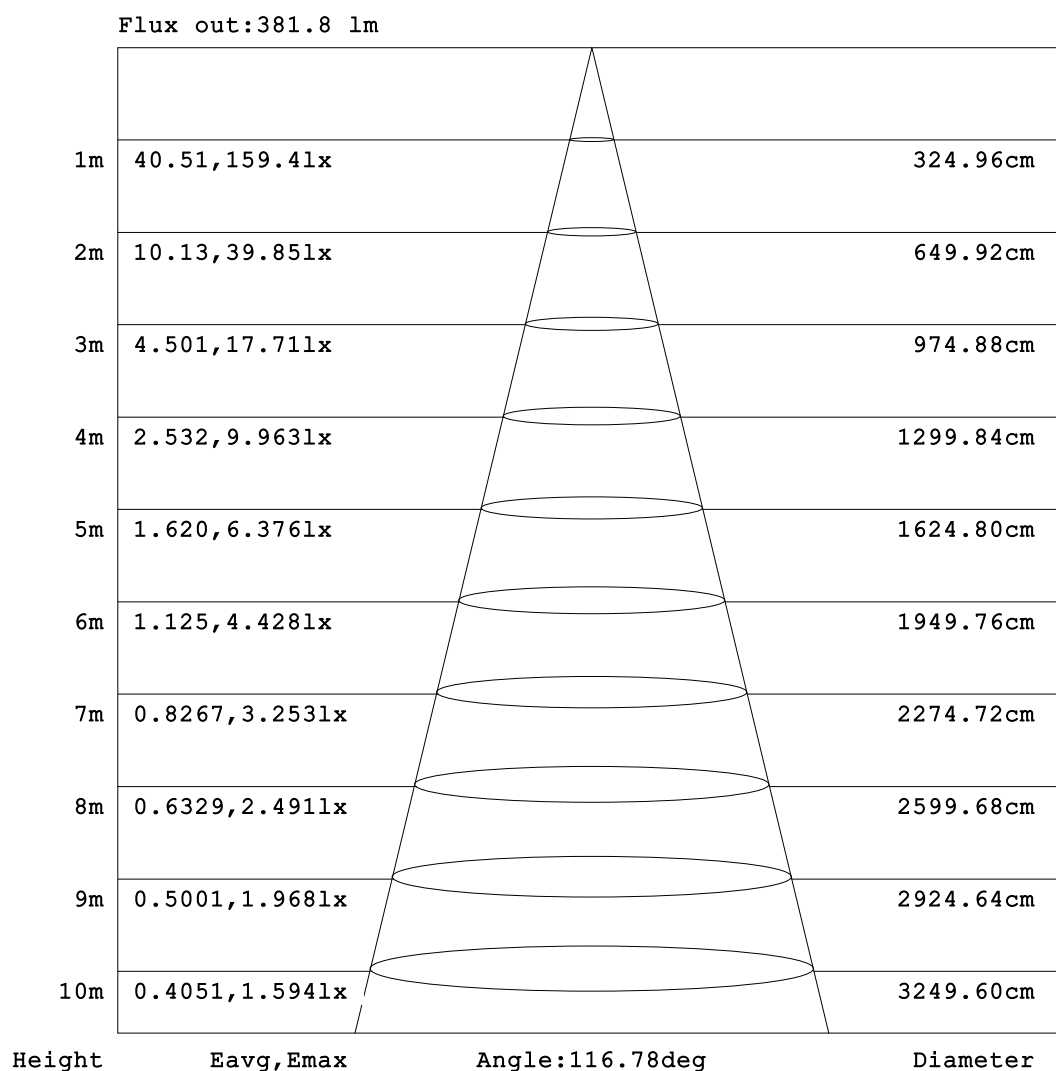


C Range: 0 - 360DEG
C Interval: 22.5DEG
Test Speed: HIGH
Temperature: 25.3DEG
Operators:
Test Date: 2022-04-14

☐ Range: 0 - 180DEG
☐ Interval: 2.0DEG
Test System: EVERFINE GO-2000B_V1 SYSTEM V2.00.450
Humidity: 65.0%
Test Distance: 5.749m [K=1.0000]
Remarks:

AAI Figure

NAME: 2835 IP67	TYPE: 2835 256LED 24V	WEIGHT:
SPEC.:	DIM.:	SERIAL No.:
MFR.:	SUR.: 0.014*0.5	Shielding Angle:



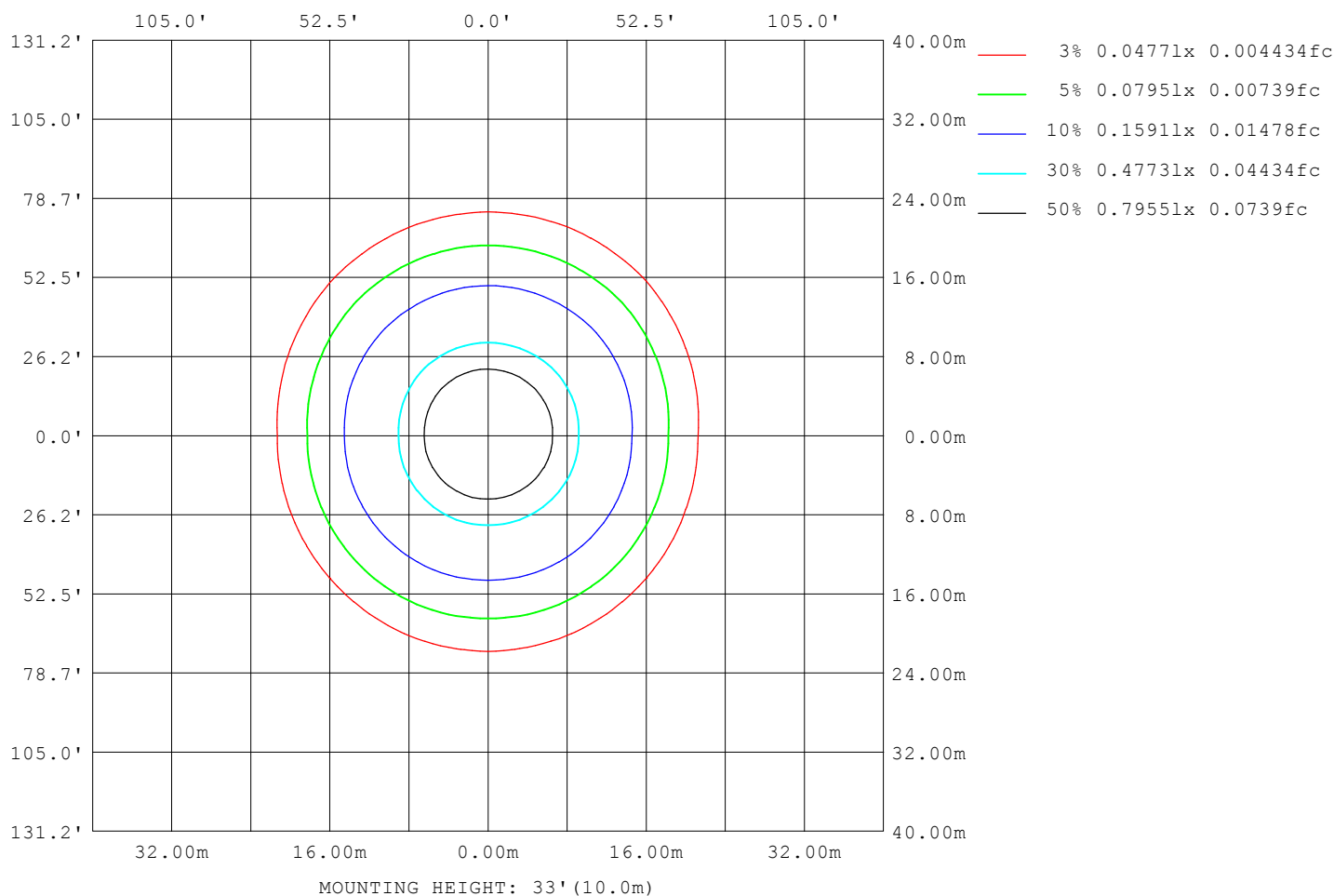
Note:The Curves indicate the illuminated area and the average illumination when the luminaire is at different distance.

C Range: 0 - 360DEG
C Interval: 22.5DEG
Test Speed: HIGH
Temperature:25.3DEG
Operators:
Test Date:2022-04-14

☐ Range: 0 - 180DEG
☐ Interval: 2.0DEG
Test System:EVERFINE GO-2000B_V1 SYSTEM V2.00.450
Humidity:65.0%
Test Distance:5.749m [K=1.0000]
Remarks:

ISOLUX DIAGRAM

NAME: 2835 IP67	TYPE: 2835 256LED 24V	WEIGHT:
SPEC.:	DIM.:	SERIAL No.:
MFR.:	SUR.: 0.014*0.5	Shielding Angle:



C Range: 0 - 360DEG
 C Interval: 22.5DEG
 Test Speed: HIGH
 Temperature: 25.3DEG
 Operators:
 Test Date: 2022-04-14

☐ Range: 0 - 180DEG
☐ Interval: 2.0DEG
 Test System: EVERFINE GO-2000B_V1 SYSTEM V2.00.450
 Humidity: 65.0%
 Test Distance: 5.749m [K=1.0000]
 Remarks:

LED Avg.L Report

NAME: 2835 IP67	TYPE: 2835 256LED 24V	WEIGHT:
SPEC.:	DIM.:	SERIAL No.:
MFR.:	SUR.: 0.014*0.5	Shielding Angle:

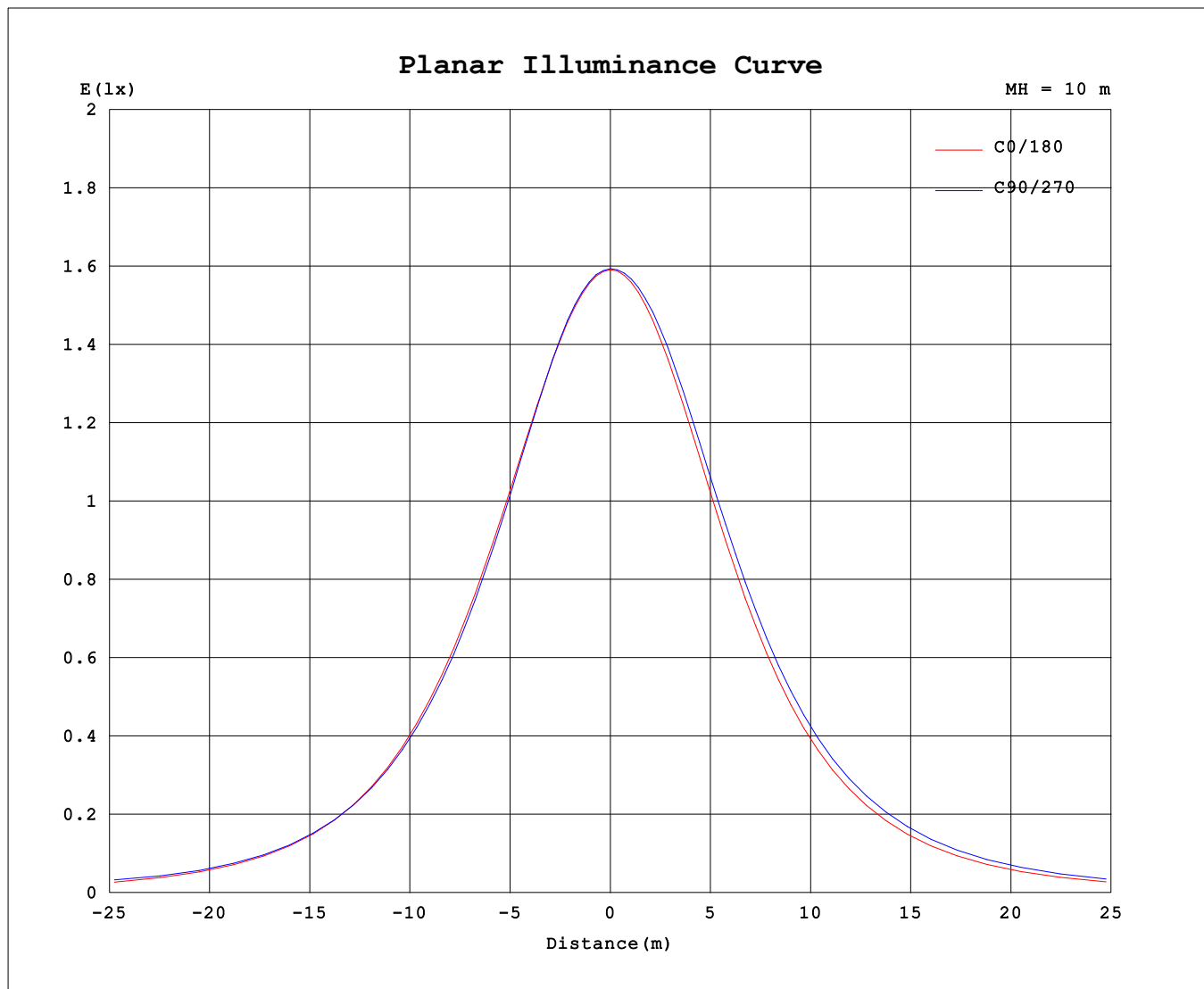
AvgL	cd/m2
L_0~180 (65) av	10381
L_0~180 (75) av	9128
L_0~180 (85) av	2516
L_90~270 (65) av	11941
L_90~270 (75) av	16399
L_90~270 (85) av	21711
L_45 (65) av	11536
L_45 (75) av	12693
L_45 (85) av	18264

Standard: GB/T 29293-2012

C Range: 0 - 360DEG
C Interval: 22.5DEG
Test Speed: HIGH
Temperature: 25.3DEG
Operators:
Test Date: 2022-04-14

☐ Range: 0 - 180DEG
☐ Interval: 2.0DEG
Test System: EVERFINE GO-2000B_V1 SYSTEM V2.00.450
Humidity: 65.0%
Test Distance: 5.749m [K=1.0000]
Remarks:

Planar Illuminance Curve



C Range: 0 - 360DEG
 C Interval: 22.5DEG
 Test Speed: HIGH
 Temperature: 25.3DEG
 Operators:
 Test Date: 2022-04-14

☐ Range: 0 - 180DEG
☐ Interval: 2.0DEG
 Test System: EVERFINE GO-2000B_V1 SYSTEM V2.00.450
 Humidity: 65.0%
 Test Distance: 5.749m [K=1.0000]
 Remarks:

LUMINOUS DISTRIBUTION INTENSITY DATA

NAME: 2835 IP67	TYPE: 2835 256LED 24V	WEIGHT:
SPEC.:	DIM.:	SERIAL No.:
MFR.:	SUR.: 0.014*0.5	Shielding Angle:

Table--1

UNIT: cd

C (DEG) □ (DEG)	0	22.5	45	67.5	90	112.5	135	157.5	180	202.5	225	247.5	270	292.5	315	337.5			
0	159	159	159	159	159	159	159	159	159	159	159	159	159	159	159	159			
5	159	159	159	159	159	159	159	159	159	159	159	159	159	159	159	159			
10	157	157	157	157	157	157	157	157	157	158	158	159	159	158	158	157			
15	155	155	155	155	155	155	155	155	155	156	157	158	158	157	156	155			
20	150	150	150	150	150	150	151	151	150	152	153	154	154	154	153	152			
25	147	147	146	146	145	146	146	146	146	148	150	151	151	150	150	148			
30	140	140	139	138	137	138	138	139	138	141	144	144	145	144	144	142			
35	134	134	133	132	131	132	132	133	132	135	138	139	139	139	139	137			
40	124	124	123	122	121	122	122	122	121	125	129	129	129	129	129	128			
45	116	116	115	114	113	114	114	114	113	117	121	122	122	121	122	120			
50	102	103	102	102	101	102	101	101	100	104	108	109	110	110	110	107			
55	91.7	92.5	92.8	92.7	91.9	92.6	91.9	91.2	90.7	95.1	99.1	101	101	101	101	96.9			
60	75.0	76.3	77.6	78.0	77.5	78.0	77.1	76.1	75.4	80.1	84.6	86.4	87.3	86.9	85.9	80.8			
65	63.9	65.2	67.1	68.2	68.4	68.3	66.9	65.5	64.6	69.6	74.3	76.4	77.5	76.9	75.5	69.9			
70	47.0	48.7	51.6	58.1	62.7	58.4	51.8	49.1	47.5	53.0	58.3	61.6	63.4	62.0	59.2	53.2			
75	35.9	38.1	45.3	55.9	57.8	56.3	45.7	38.3	35.8	41.7	48.3	58.0	64.1	59.6	49.1	42.1			
80	16.2	25.7	32.6	34.4	34.5	34.7	33.4	25.7	18.8	27.1	41.5	49.9	51.4	49.5	42.4	28.2			
85	0.58	16.0	19.7	22.4	23.1	22.9	20.2	16.3	8.58	19.6	30.6	34.7	35.7	34.0	30.2	20.9			
90	0.24	6.99	11.8	14.3	15.2	14.9	12.3	7.15	0.21	8.27	15.6	19.0	19.8	18.5	15.3	8.80			
95	0.30	6.61	11.6	14.0	15.0	14.6	12.1	6.90	0.27	6.86	12.9	15.8	16.3	15.4	12.7	7.24			
100	0.46	6.42	11.7	14.2	15.1	14.7	12.4	7.02	0.41	4.35	11.6	15.2	15.8	14.8	12.2	5.35			
105	0.59	6.32	11.8	14.4	15.4	14.9	12.5	6.94	0.52	2.53	7.28	14.8	15.4	14.5	11.0	3.24			
110	0.79	6.30	12.2	15.0	16.0	15.4	12.8	7.09	0.70	0.70	7.22	11.8	13.7	12.2	8.19	0.78			
115	0.93	6.55	12.9	15.7	16.7	16.2	13.5	7.43	0.81	0.79	5.58	8.16	12.2	10.8	6.55	0.80			
120	1.12	7.08	14.9	18.1	19.1	18.5	15.6	8.01	1.00	0.96	2.46	5.40	10.6	9.02	3.04	0.96			
125	1.24	7.71	17.2	20.7	21.8	21.1	17.8	8.72	1.12	1.07	1.13	5.38	8.01	6.96	1.20	1.06			
130	1.41	8.05	21.8	27.1	28.7	28.1	22.7	9.56	1.29	1.23	1.21	1.51	3.27	1.66	1.21	1.21			
135	1.50	6.89	24.0	32.2	34.6	33.1	24.7	8.79	1.38	1.33	1.29	1.28	1.35	1.29	1.29	1.31			
140	1.64	3.63	21.7	34.8	39.6	36.2	22.1	5.61	1.51	1.45	1.41	1.39	1.37	1.39	1.41	1.44			
145	1.71	2.36	16.4	30.9	36.6	31.9	16.3	3.95	1.59	1.53	1.49	1.47	1.43	1.46	1.47	1.53			
150	1.82	1.85	8.22	17.8	22.4	17.4	8.14	2.62	1.69	1.63	1.60	1.58	1.52	1.55	1.59	1.64			
155	1.88	1.88	4.53	10.3	12.9	9.73	5.01	2.22	1.75	1.70	1.67	1.65	1.60	1.62	1.66	1.71			
160	1.96	1.96	2.56	4.28	5.33	4.31	2.96	2.02	1.85	1.81	1.78	1.76	1.73	1.72	1.77	1.82			
165	2.02	2.02	2.21	2.81	3.21	3.00	2.38	2.01	1.92	1.88	1.85	1.84	1.82	1.81	1.85	1.90			
170	2.11	2.11	2.10	2.17	2.28	2.21	2.10	2.10	2.04	2.01	1.98	1.97	1.97	1.95	1.99	2.04			
175	2.18	2.18	2.17	2.15	2.17	2.15	2.15	2.17	2.13	2.10	2.08	2.07	2.07	2.06	2.10	2.13			
180	2.25	2.24	2.23	2.23	2.24	2.23	2.24	2.25	2.25	2.24	2.23	2.23	2.24	2.23	2.24	2.25			

C Range: 0 - 360DEG

C Interval: 22.5DEG

Test Speed: HIGH

Temperature:25.3DEG

Operators:

Test Date:2022-04-14

□ Range: 0 - 180DEG

□ Interval: 2.0DEG

Test System:EVERFINE GO-2000B_V1 SYSTEM V2.00.450

Humidity:65.0%

Test Distance:5.749m [K=1.0000]

Remarks: