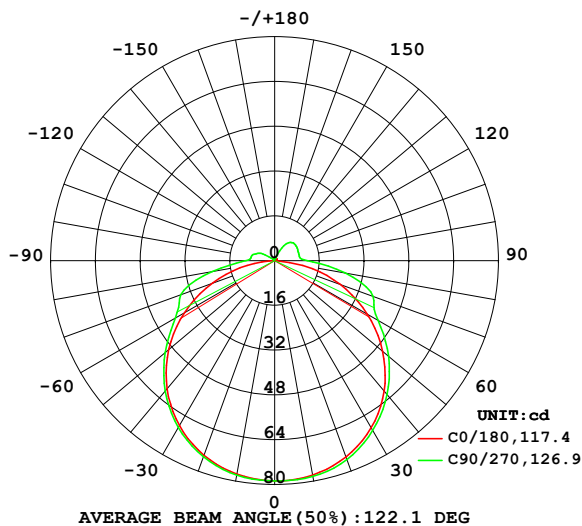


LUMINAIRE PHOTOMETRIC TEST REPORT

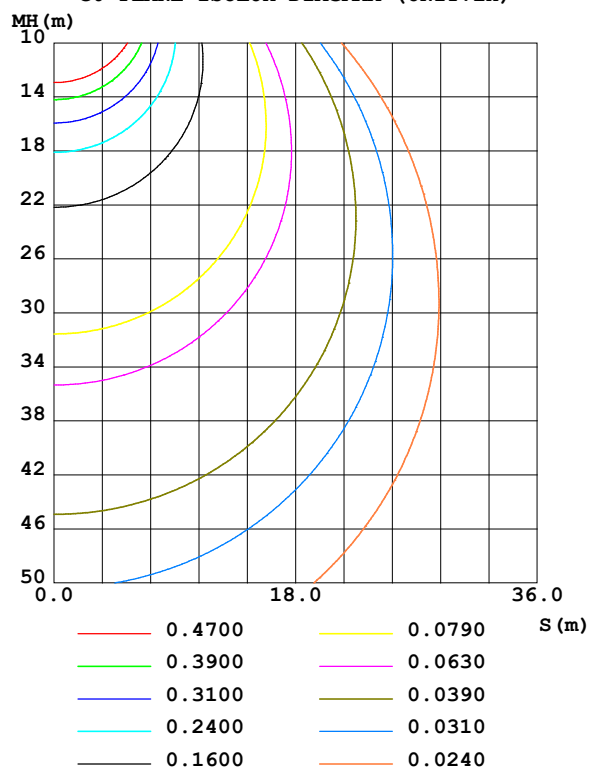
NAME: 2835 IP67	TYPE: 2835 80LED 24V	WEIGHT:
SPEC.:	DIM.:	SERIAL No.:
MFR.:	SUR.: 0.012*0.5	Shielding Angle:

DATA OF LAMP		PHOTOMETRIC DATA Eff: 124.51 lm/W			
MODEL	6500K RA90 12MM 4.8W	Imax (cd)	78.71	S/MH(C0/180)	1.29
NOMINAL POWER(W)	2.4	LOR(%)	100.0	S/MH(C90/270)	1.30
RATED VOLTAGE(V)	24	TOTAL FLUX(lm)	287.14	□ UP,DN(C0-180)	5.4,46.5
NOMINAL FLUX(lm)	7.17843	CIE CLASS	DIRECT	□ UP,DN(C180-360)	2.9,45.2
LAMPS INSIDE	40	□ up (%)	8.3	CIBSE SHR NOM	1.50
TEST VOLTAGE(V)	24	□ down (%)	91.7	CIBSE SHR MAX	1.50

LUMINOUS INTENSITY DISTRIBUTION DIAGRAM



C0 PLANE ISOLUX DIAGRAM (UNIT:lx)



C Range: 0 - 360DEG  
 C Interval: 22.5DEG  
 Test Speed: HIGH  
 Temperature:25.3DEG  
 Operators:  
 Test Date:2022-04-15

□ Range: 0 - 180DEG  
 □ Interval: 2.0DEG  
 Test System:EVERFINE GO-2000B\_V1 SYSTEM V2.00.450  
 Humidity:65.0%  
 Test Distance:5.749m [K=1.0000]  
 Remarks:

## ZONAL FLUX DIAGRAM

### ZONAL FLUX DIAGRAM:

°	C0	C45	C90	C135	C180	C225	C270	C315	°	□ zone	□ total	%lum, lamp
10	77.78	78.12	78.26	77.88	77.47	77.64	77.82	77.84	0- 10	7.473	7.473	2.6,2.6
20	74.58	75.51	75.62	75.08	73.95	74.36	74.52	74.80	10- 20	21.65	29.12	10.1,10.1
30	68.98	70.22	70.06	69.72	68.07	68.68	68.83	69.33	20- 30	33.36	62.48	21.8,21.8
40	60.84	62.54	62.46	61.82	59.80	60.74	60.82	61.57	30- 40	41.05	103.5	36.1,36.1
50	50.34	52.84	53.11	52.01	49.39	50.83	51.03	51.66	40- 50	43.70	147.2	51.3,51.3
60	38.20	41.47	42.66	40.77	37.20	39.57	41.02	40.21	50- 60	41.08	188.3	65.6,65.6
70	24.95	30.88	37.37	30.16	23.70	29.13	35.68	30.09	60- 70	34.71	223.0	77.7,77.7
80	10.25	21.09	25.60	21.77	9.990	20.18	22.66	19.85	70- 80	26.71	249.7	87,87
90	0.1141	8.662	11.67	9.149	0.1048	7.999	10.31	7.892	80- 90	13.56	263.3	91.7,91.7
100	0.2235	7.233	9.030	7.501	0.2071	6.626	8.526	6.689	90-100	6.848	270.1	94.1,94.1
110	0.3829	6.929	9.018	7.150	0.3499	3.591	7.295	4.277	100-110	5.560	275.7	96,96
120	0.5423	6.745	9.301	6.767	0.4974	0.6369	4.962	0.6272	110-120	4.218	279.9	97.5,97.5
130	0.6804	5.883	9.375	5.933	0.6307	0.6138	0.7057	0.6088	120-130	2.922	282.8	98.5,98.5
140	0.7922	3.820	8.549	4.356	0.7353	0.7113	0.6967	0.6991	130-140	2.107	284.9	99.2,99.2
150	0.8755	1.210	5.198	1.405	0.8162	0.7945	0.7633	0.7823	140-150	1.305	286.2	99.7,99.7
160	0.9469	0.9275	1.067	0.9343	0.8995	0.8730	0.8537	0.8703	150-160	0.5267	286.8	99.9,99.9
170	1.023	1.011	1.018	1.008	0.9923	0.9729	0.9701	0.9749	160-170	0.2678	287.0	100,100
180	1.094	1.085	1.091	1.091	1.094	1.085	1.094	1.091	170-180	0.0983	287.1	100,100
DEG	LUMINOUS INTENSITY:cd									UNIT:lm		

Conical surface Flux(90deg): 129.77 lm

%lum = 45.2%

%lamp = 45.2%

Conical surface Flux(120deg): 188.3 lm

%lum = 65.6%

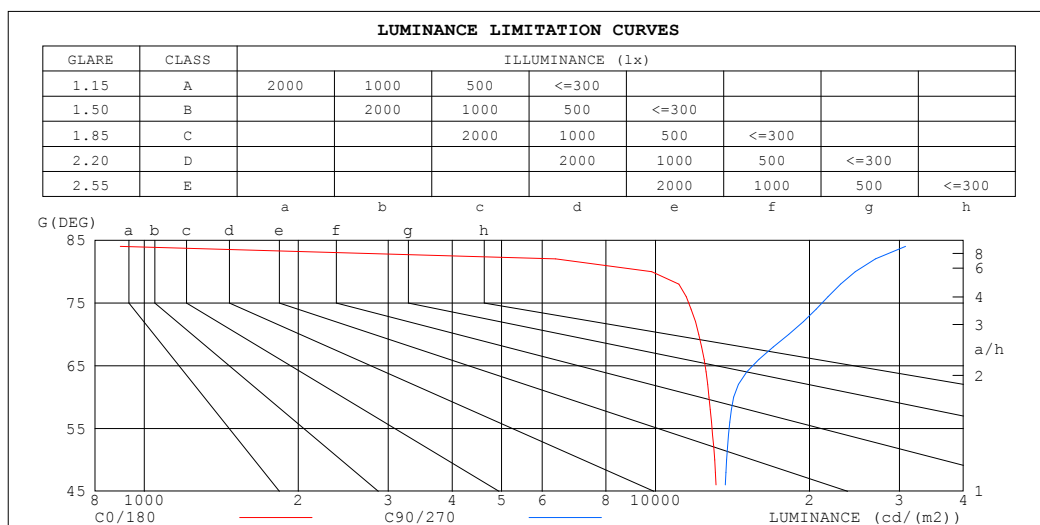
%lamp = 65.6%

C Range: 0 - 360DEG  
C Interval: 22.5DEG  
Test Speed: HIGH  
Temperature:25.3DEG  
Operators:  
Test Date:2022-04-15

□ Range: 0 - 180DEG  
□ Interval: 2.0DEG  
Test System:EVERFINE GO-2000B\_V1 SYSTEM V2.00.450  
Humidity:65.0%  
Test Distance:5.749m [K=1.0000]  
Remarks:

### LUMINANCE LIMITATION CURVES

NAME: 2835 IP67	TYPE: 2835 80LED 24V	WEIGHT:
SPEC.:	DIM.:	SERIAL No.:
MFR.:	SUR.: 0.012*0.5	Shielding Angle:



LUMINANCE cd/(m2)		
G (DEG)	C0/180	C90/270
85	1075	36964
80	9833	24580
75	12504	21970
70	12151	18213
65	13016	15636
60	12728	14224
55	13253	14244
50	13046	13775
45	13405	13889

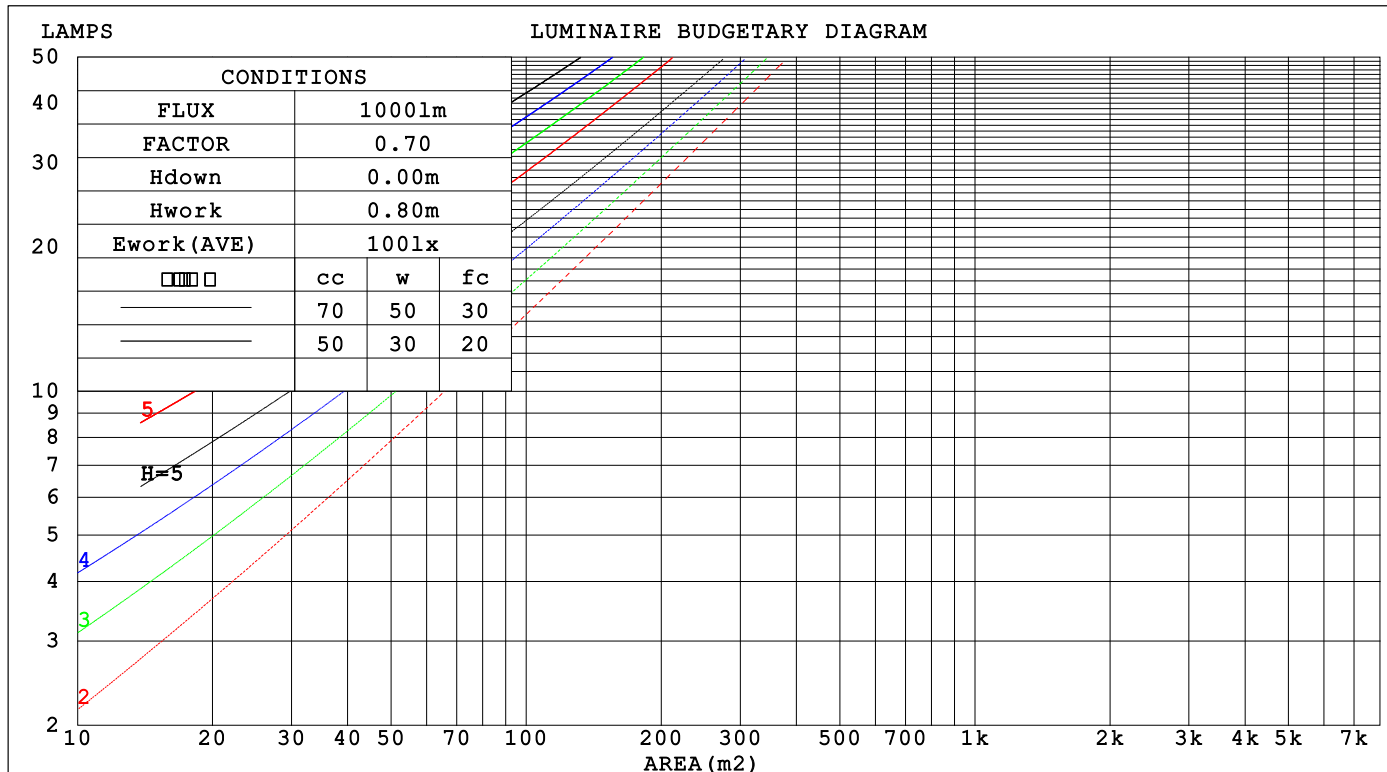
C Range: 0 - 360DEG  
C Interval: 22.5DEG  
Test Speed: HIGH  
Temperature:25.3DEG  
Operators:  
Test Date:2022-04-15

☐ Range: 0 - 180DEG  
☐ Interval: 2.0DEG  
Test System:EVERFINE GO-2000B\_V1 SYSTEM V2.00.450  
Humidity:65.0%  
Test Distance:5.749m [K=1.0000]  
Remarks:

## CU AND LUMINAIRE BUDGETARY ESTIMATE DIAGRAM

NAME: 2835 IP67	TYPE: 2835 80LED 24V	WEIGHT:
SPEC.:	DIM.:	SERIAL No.:
MFR.:	SUR.: 0.012*0.5	Shielding Angle:

□cc	80%			70%			50%			30%			10%			0
□w	50%	30%	10%	50%	30%	10%	50%	30%	10%	50%	30%	10%	50%	30%	10%	0
□fc	20%			20%			20%			20%			20%			0
RCR	RCR:Room Cavity Ratio															



C Range: 0 - 360DEG  
C Interval: 22.5DEG  
Test Speed: HIGH  
Temperature:25.3DEG  
Operators:  
Test Date:2022-04-15

□ Range: 0 - 180DEG  
□ Interval: 2.0DEG  
Test System:EVERFINE GO-2000B\_V1 SYSTEM V2.00.450  
Humidity:65.0%  
Test Distance:5.749m [K=1.0000]  
Remarks:

### WEC AND CCEC

NAME: 2835 IP67	TYPE: 2835 80LED 24V	WEIGHT:
SPEC.:	DIM.:	SERIAL No.:
MFR.:	SUR.: 0.012*0.5	Shielding Angle:

<input type="checkbox"/> cc	80%	70%	50%	30%	10%	0
<input type="checkbox"/> w	50% 30% 10%	50% 30% 10%	50% 30% 10%	50% 30% 10%	50% 30% 10%	0
<input type="checkbox"/> fc	20%	20%	20%	20%	20%	0
RCR	RCR:Room Cavity Ratio					Wall Exitance Coefficients(WEC)
0.0						
1.0	.354 .201 .064	.344 .196 .062	.326 .187 .060	.309 .178 .057	.294 .170 .055	
2.0	.318 .174 .053	.309 .170 .052	.293 .163 .051	.278 .156 .049	.264 .149 .047	
3.0	.287 .153 .046	.279 .150 .045	.265 .143 .044	.251 .138 .042	.239 .132 .041	
4.0	.261 .136 .040	.254 .133 .039	.241 .128 .038	.229 .123 .037	.217 .118 .036	
5.0	.239 .122 .035	.233 .119 .035	.221 .115 .034	.210 .111 .033	.199 .107 .032	
6.0	.220 .110 .032	.214 .108 .031	.204 .104 .030	.194 .101 .030	.184 .097 .029	
7.0	.203 .101 .029	.198 .099 .028	.189 .095 .027	.180 .092 .027	.171 .089 .026	
8.0	.189 .092 .026	.185 .091 .026	.176 .088 .025	.167 .085 .024	.160 .082 .024	
9.0	.177 .085 .024	.172 .084 .024	.164 .081 .023	.157 .079 .023	.150 .076 .022	
10.0	.166 .079 .022	.162 .078 .022	.154 .076 .021	.147 .073 .021	.141 .071 .020	

<input type="checkbox"/> cc	80%	70%	50%	30%	10%	0
<input type="checkbox"/> w	50% 30% 10%	50% 30% 10%	50% 30% 10%	50% 30% 10%	50% 30% 10%	0
<input type="checkbox"/> fc	20%	20%	20%	20%	20%	0
RCR	RCR:Room Cavity Ratio					Ceiling Cavity Exitance Coefficients(CCEC)
0.0	.254 .254 .254	.217 .217 .217	.148 .148 .148	.085 .085 .085	.027 .027 .027	
1.0	.247 .220 .195	.211 .188 .168	.145 .130 .116	.083 .075 .067	.027 .024 .022	
2.0	.240 .196 .159	.206 .169 .138	.141 .117 .096	.081 .068 .056	.026 .022 .018	
3.0	.232 .179 .136	.199 .154 .118	.137 .107 .083	.079 .063 .049	.025 .020 .016	
4.0	.225 .166 .121	.193 .144 .105	.133 .100 .074	.077 .059 .044	.025 .019 .014	
5.0	.217 .156 .111	.186 .135 .097	.128 .094 .068	.074 .055 .040	.024 .018 .013	
6.0	.210 .148 .104	.180 .128 .090	.124 .090 .064	.072 .053 .038	.023 .017 .013	
7.0	.203 .141 .098	.174 .122 .085	.120 .086 .061	.070 .051 .036	.023 .017 .012	
8.0	.196 .135 .094	.169 .117 .082	.117 .082 .058	.068 .049 .035	.022 .016 .011	
9.0	.190 .131 .091	.163 .113 .079	.113 .080 .056	.066 .047 .033	.021 .015 .011	
10.0	.184 .126 .088	.159 .110 .077	.110 .077 .055	.064 .046 .033	.021 .015 .011	

C Range: 0 - 360DEG  
C Interval: 22.5DEG  
Test Speed: HIGH  
Temperature:25.3DEG  
Operators:  
Test Date:2022-04-15

☐ Range: 0 - 180DEG  
☐ Interval: 2.0DEG  
Test System:EVERFINE GO-2000B\_V1 SYSTEM V2.00.450  
Humidity:65.0%  
Test Distance:5.749m [K=1.0000]  
Remarks:

### UGR(Unified Glare Rating) Table

NAME: 2835 IP67					TYPE: 2835 80LED 24V			WEIGHT:			
SPEC.:					DIM.:			SERIAL No.:			
MFR.:					SUR.: 0.012*0.5			Shielding Angle:			
ceiling/cavity	0.7	0.7	0.5	0.5	0.3	0.7	0.7	0.5	0.5	0.3	
walls	0.5	0.3	0.5	0.3	0.3	0.5	0.3	0.5	0.3	0.3	
working plane	0.2	0.2	0.2	0.2	0.2	0.2	0.2	0.2	0.2	0.2	
Room dimensions		Viewed crosswise					Viewed endwise				
x = 2H y = 2H	25.6	27.1	26.0	27.4	27.8	26.0	27.5	26.4	27.8	28.2	
	27.3	28.6	27.7	29.0	29.4	28.4	29.8	28.8	30.2	30.6	
	28.0	29.2	28.4	29.6	30.1	29.8	31.0	30.2	31.5	31.9	
	28.5	29.7	29.0	30.1	30.6	31.0	32.2	31.4	32.6	33.1	
	28.6	29.7	29.0	30.2	30.6	31.5	32.7	32.0	33.1	33.6	
	28.5	29.6	29.0	30.1	30.6	32.1	33.2	32.5	33.6	34.1	
4H	2H	26.4	27.6	26.8	28.0	28.5	26.7	28.0	27.1	28.4	28.8
	3H	28.2	29.4	28.7	29.8	30.3	29.3	30.5	29.8	30.9	31.4
	4H	29.1	30.2	29.6	30.6	31.1	30.8	31.9	31.3	32.3	32.8
	6H	29.9	30.8	30.4	31.3	31.8	32.2	33.2	32.8	33.7	34.2
	8H	30.0	30.9	30.5	31.4	31.9	32.9	33.7	33.4	34.3	34.8
	12H	30.0	30.8	30.5	31.3	31.9	33.5	34.3	34.1	34.8	35.4
8H	4H	29.8	30.6	30.3	31.2	31.7	31.2	32.1	31.7	32.6	33.1
	6H	30.8	31.5	31.4	32.1	32.7	32.8	33.6	33.4	34.1	34.7
	8H	31.1	31.8	31.7	32.3	33.0	33.7	34.3	34.2	34.9	35.5
	12H	31.3	31.9	31.9	32.4	33.1	34.5	35.1	35.1	35.6	36.3
12H	4H	29.9	30.7	30.5	31.3	31.9	31.2	32.0	31.8	32.6	33.1
	6H	31.1	31.7	31.7	32.3	32.9	33.0	33.6	33.5	34.2	34.8
	8H	31.5	32.1	32.1	32.7	33.3	33.9	34.4	34.5	35.0	35.7
Variations with the observer position at spacings(CIE Pub.117):											
S = 1.0H	+ 0.1 / - 0.2					+ 0.1 / - 0.1					
1.5H	+ 0.2 / - 0.3					+ 0.2 / - 0.3					
2.0H	+ 0.1 / - 0.3					+ 0.1 / - 0.3					

CIE Pub.117, 287.1 lm Total Lamp Luminous Flux Correct (8log(F/F0) = -4.3)  
Area: 0.006 m2

C Range: 0 - 360DEG  
C Interval: 22.5DEG  
Test Speed: HIGH  
Temperature:25.3DEG  
Operators:  
Test Date:2022-04-15

☐ Range: 0 - 180DEG  
☐ Interval: 2.0DEG  
Test System:EVERFINE GO-2000B\_V1 SYSTEM V2.00.450  
Humidity:65.0%  
Test Distance:5.749m [K=1.0000]  
Remarks:

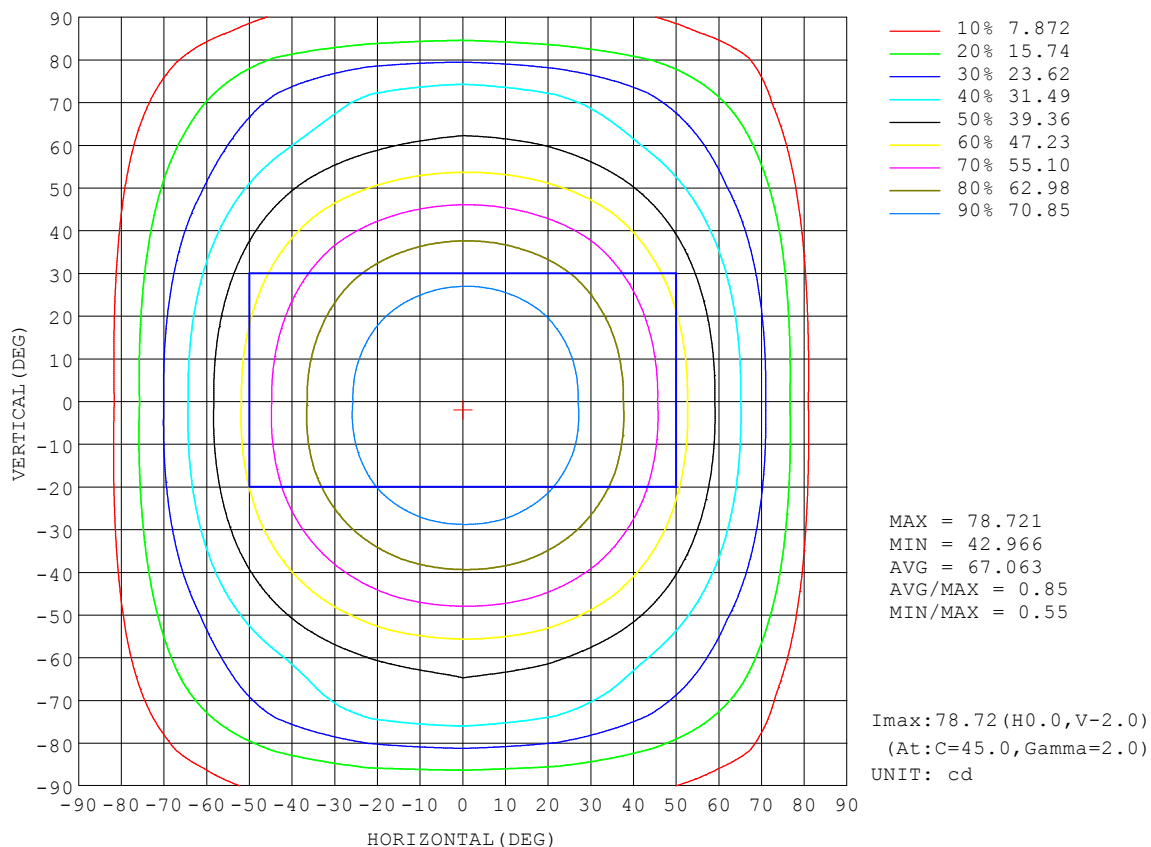
```

Range: 0 - 180DEG
Interval: 2.0DEG
Test System:EVERFINE GO-2000B_V1 SYSTEM V2.00.450
Humidity:65.0%
Test Distance:5.749m [K=1.0000]
Remarks:

```

### ISOCANDELA DIAGRAM

NAME: 2835 IP67	TYPE: 2835 80LED 24V	WEIGHT:
SPEC.:	DIM.:	SERIAL No.:
MFR.:	SUR.: 0.012*0.5	Shielding Angle:



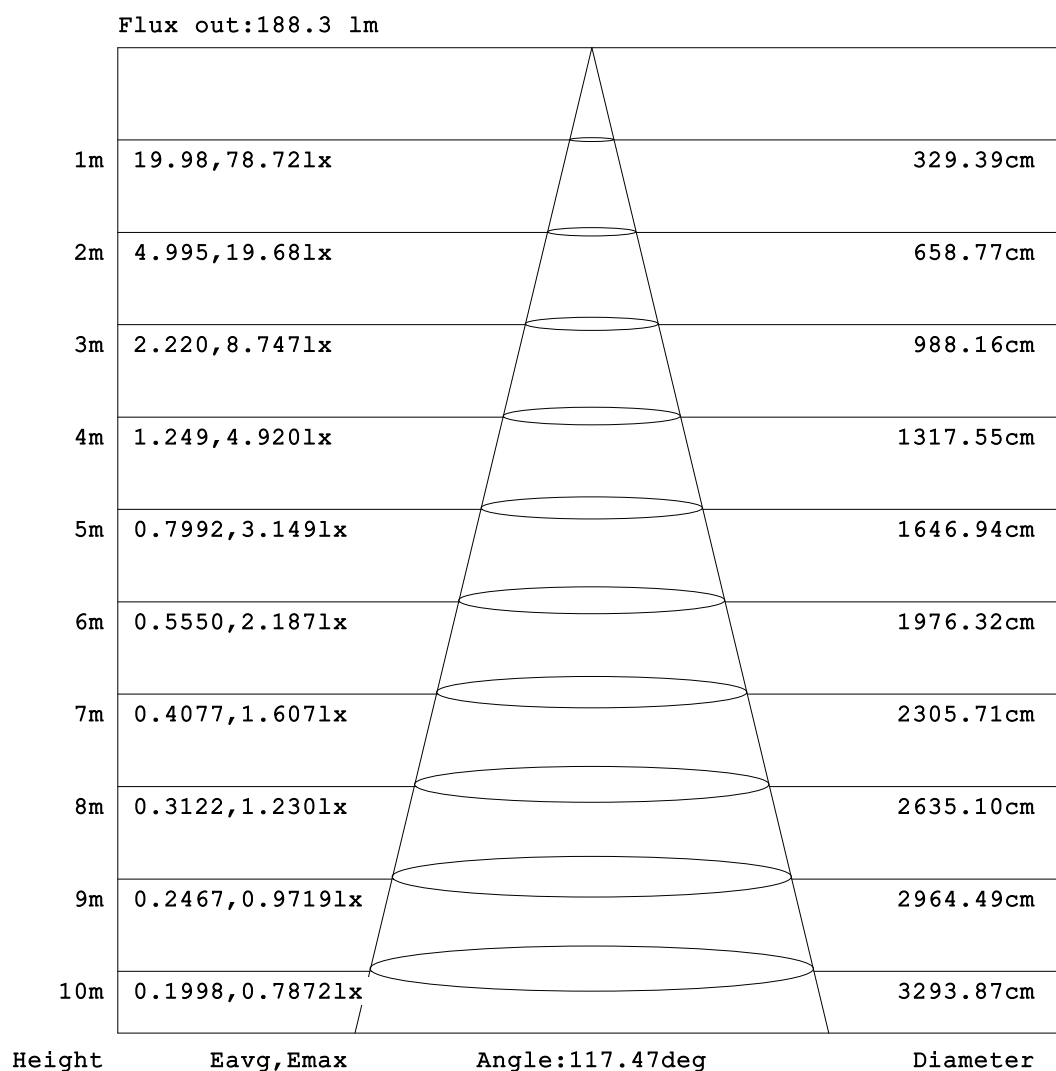
C Range: 0 - 360DEG  
C Interval: 22.5DEG  
Test Speed: HIGH  
Temperature: 25.3DEG  
Operators:  
Test Date: 2022-04-15

☐ Range: 0 - 180DEG  
☐ Interval: 2.0DEG  
Test System: EVERFINE GO-2000B\_V1 SYSTEM V2.00.450  
Humidity: 65.0%  
Test Distance: 5.749m [K=1.0000]  
Remarks:



**AAI Figure**

NAME: 2835 IP67	TYPE: 2835 80LED 24V	WEIGHT:
SPEC.:	DIM.:	SERIAL No.:
MFR.:	SUR.: 0.012*0.5	Shielding Angle:



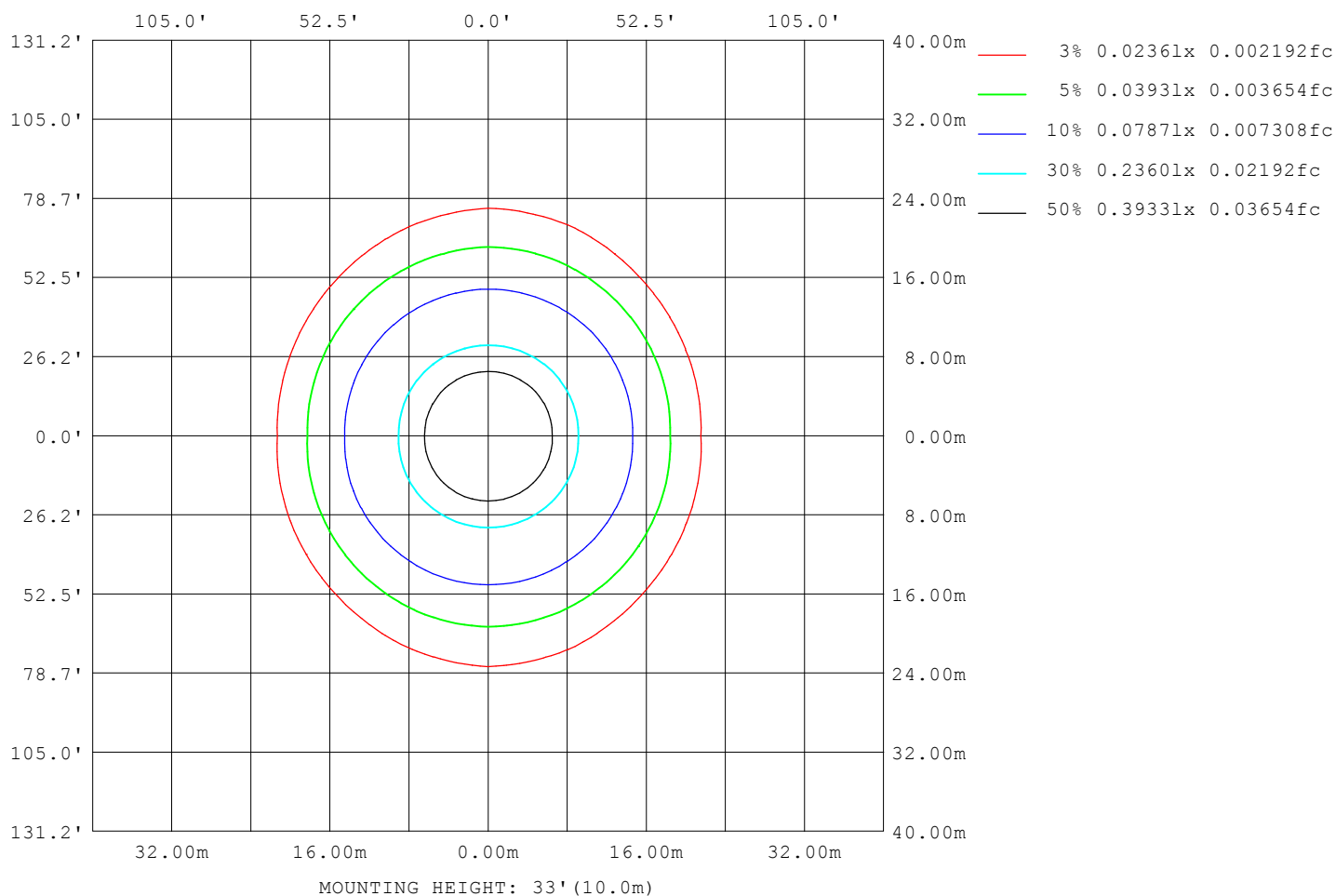
**Note:**The Curves indicate the illuminated area and the average illumination when the luminaire is at different distance.

C Range: 0 - 360DEG  
 C Interval: 22.5DEG  
 Test Speed: HIGH  
 Temperature:25.3DEG  
 Operators:  
 Test Date:2022-04-15

☐ Range: 0 - 180DEG  
☐ Interval: 2.0DEG  
 Test System:EVERFINE GO-2000B\_V1 SYSTEM V2.00.450  
 Humidity:65.0%  
 Test Distance:5.749m [K=1.0000]  
 Remarks:

**ISOLUX DIAGRAM**

NAME: 2835 IP67	TYPE: 2835 80LED 24V	WEIGHT:
SPEC.:	DIM.:	SERIAL No.:
MFR.:	SUR.: 0.012*0.5	Shielding Angle:



C Range: 0 - 360DEG  
 C Interval: 22.5DEG  
 Test Speed: HIGH  
 Temperature: 25.3DEG  
 Operators:  
 Test Date: 2022-04-15

☐ Range: 0 - 180DEG  
☐ Interval: 2.0DEG  
 Test System: EVERFINE GO-2000B\_V1 SYSTEM V2.00.450  
 Humidity: 65.0%  
 Test Distance: 5.749m [K=1.0000]  
 Remarks:

### LED Avg.L Report

NAME: 2835 IP67	TYPE: 2835 80LED 24V	WEIGHT:
SPEC.:	DIM.:	SERIAL No.:
MFR.:	SUR.: 0.012*0.5	Shielding Angle:

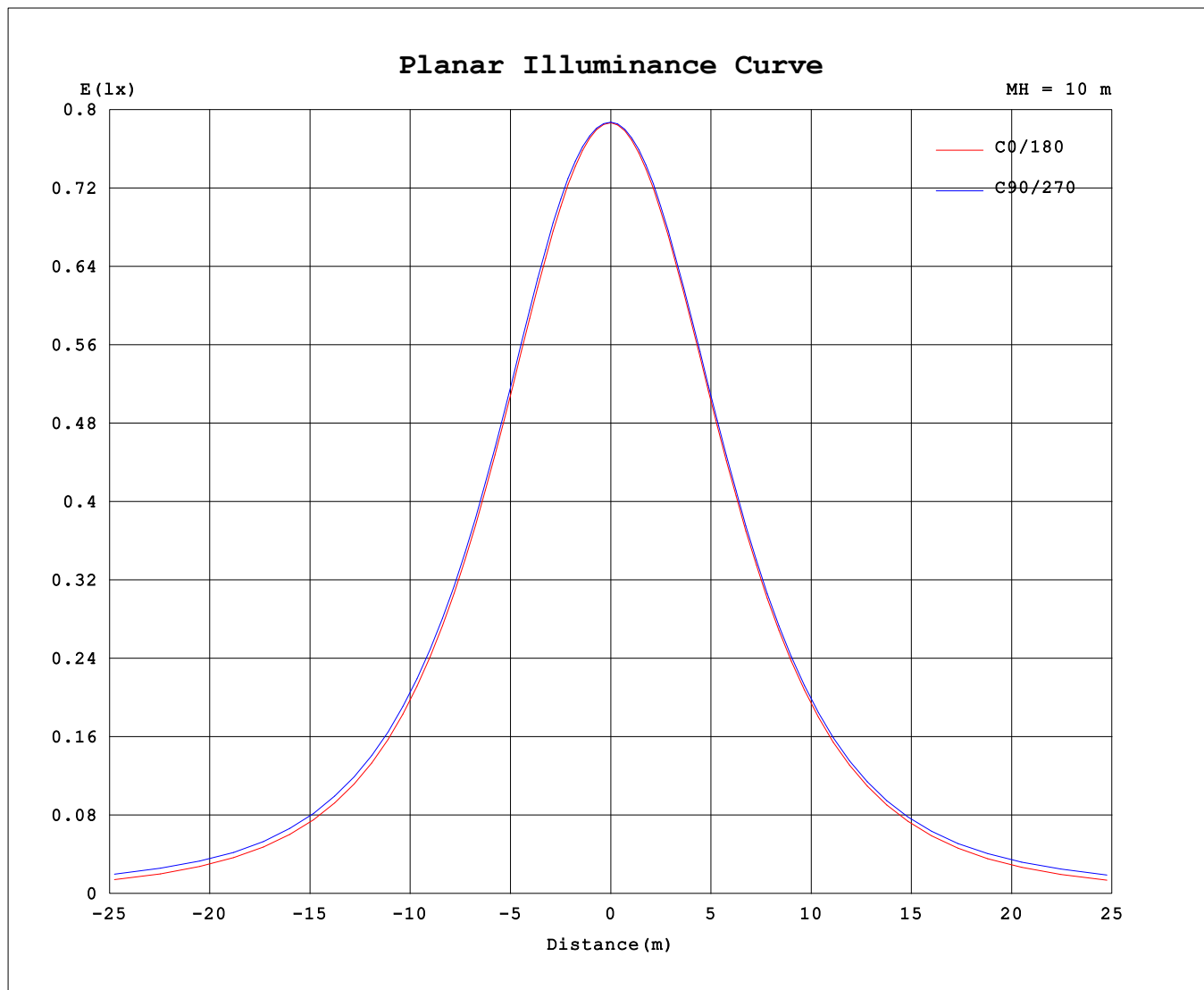
AvgL	cd/m2
L_0~180 (65) av	12282
L_0~180 (75) av	11201
L_0~180 (85) av	3194
L_90~270 (65) av	15175
L_90~270 (75) av	20402
L_90~270 (85) av	31389
L_45 (65) av	13686
L_45 (75) av	17117
L_45 (85) av	25842

Standard: GB/T 29293-2012

C Range: 0 - 360DEG  
C Interval: 22.5DEG  
Test Speed: HIGH  
Temperature:25.3DEG  
Operators:  
Test Date:2022-04-15

☐ Range: 0 - 180DEG  
☐ Interval: 2.0DEG  
Test System:EVERFINE GO-2000B\_V1 SYSTEM V2.00.450  
Humidity:65.0%  
Test Distance:5.749m [K=1.0000]  
Remarks:

### Planar Illuminance Curve



C Range: 0 - 360DEG  
 C Interval: 22.5DEG  
 Test Speed: HIGH  
 Temperature: 25.3DEG  
 Operators:  
 Test Date: 2022-04-15

☐ Range: 0 - 180DEG  
☐ Interval: 2.0DEG  
 Test System: EVERFINE GO-2000B\_V1 SYSTEM V2.00.450  
 Humidity: 65.0%  
 Test Distance: 5.749m [K=1.0000]  
 Remarks:

## LUMINOUS DISTRIBUTION INTENSITY DATA

NAME: 2835 IP67	TYPE: 2835 80LED 24V	WEIGHT:
SPEC.:	DIM.:	SERIAL No.:
MFR.:	SUR.: 0.012*0.5	Shielding Angle:

Table--1

UNIT: cd

C (DEG) □ (DEG)	0	22.5	45	67.5	90	112.5	135	157.5	180	202.5	225	247.5	270	292.5	315	337.5			
0	78.7	78.7	78.7	78.7	78.7	78.7	78.7	78.7	78.7	78.7	78.7	78.7	78.7	78.7	78.7	78.7			
5	78.6	78.6	78.7	78.7	78.7	78.6	78.6	78.5	78.5	78.5	78.5	78.5	78.6	78.6	78.6	78.6			
10	77.8	77.9	78.1	78.3	78.3	78.2	77.9	77.6	77.5	77.5	77.6	77.7	77.8	77.8	77.8	77.8			
15	76.8	77.1	77.4	77.6	77.6	77.4	77.0	76.6	76.3	76.4	76.6	76.7	76.8	76.8	76.9	76.8			
20	74.6	75.1	75.5	75.7	75.6	75.5	75.1	74.4	73.9	74.1	74.4	74.4	74.5	74.6	74.8	74.7			
25	72.6	73.3	73.7	73.8	73.7	73.6	73.3	72.5	71.9	72.1	72.3	72.4	72.5	72.7	72.9	72.8			
30	69.0	69.8	70.2	70.3	70.1	70.0	69.7	69.0	68.1	68.3	68.7	68.7	68.8	69.1	69.3	69.2			
35	66.0	67.0	67.4	67.5	67.3	67.1	66.8	66.1	65.0	65.4	65.8	65.7	65.9	66.1	66.5	66.4			
40	60.8	62.1	62.5	62.7	62.5	62.3	61.8	61.1	59.8	60.3	60.7	60.7	60.8	61.1	61.6	61.3			
45	56.9	58.2	58.9	59.1	58.9	58.7	58.1	57.3	55.9	56.4	57.0	56.9	57.1	57.3	57.8	57.5			
50	50.3	51.9	52.8	53.2	53.1	52.9	52.0	51.0	49.4	50.1	50.8	50.8	51.0	51.2	51.7	51.1			
55	45.6	47.2	48.4	49.1	49.0	48.7	47.6	46.5	44.7	45.6	46.5	46.6	46.8	47.0	47.2	46.5			
60	38.2	39.9	41.5	42.5	42.7	42.1	40.8	39.2	37.2	38.3	39.6	40.2	41.0	40.9	40.2	39.2			
65	33.0	34.8	36.7	38.8	39.6	38.1	36.1	34.1	31.9	33.3	35.0	36.7	38.2	37.5	35.6	34.2			
70	24.9	27.1	30.9	35.7	37.4	35.4	30.2	26.4	23.7	25.5	29.1	33.7	35.7	34.4	30.1	26.6			
75	19.4	22.3	27.9	32.5	34.1	33.0	28.1	21.5	18.1	20.7	26.6	30.7	31.8	30.5	27.1	21.9			
80	10.3	16.2	21.1	24.6	25.6	24.9	21.8	16.0	9.99	14.6	20.2	22.3	22.7	21.7	19.9	15.5			
85	0.56	11.2	15.4	18.4	19.3	18.8	16.0	11.1	4.66	9.95	14.5	15.9	16.5	15.5	13.8	10.6			
90	0.11	5.13	8.66	11.0	11.7	11.3	9.15	5.22	0.10	4.46	8.00	9.80	10.3	9.61	7.89	4.84			
95	0.15	4.23	7.32	9.10	9.67	9.34	7.71	4.45	0.14	3.92	7.06	8.57	8.91	8.40	6.95	4.05			
100	0.22	3.90	7.23	8.63	9.03	8.75	7.50	4.25	0.21	2.16	6.63	8.22	8.53	8.10	6.69	2.65			
105	0.29	3.54	7.26	8.64	8.99	8.70	7.45	3.83	0.27	0.96	3.90	7.90	8.34	7.86	5.89	1.29			
110	0.38	3.05	6.93	8.65	9.02	8.63	7.15	3.31	0.35	0.36	3.59	6.30	7.29	6.66	4.28	0.35			
115	0.45	2.79	6.85	8.69	9.12	8.69	6.96	3.06	0.41	0.41	2.48	4.19	6.55	5.84	2.92	0.40			
120	0.54	2.20	6.75	8.80	9.30	8.76	6.77	2.52	0.50	0.49	0.64	2.52	4.96	3.78	0.63	0.48			
125	0.60	1.69	6.51	8.80	9.36	8.72	6.59	2.08	0.55	0.54	0.55	1.42	2.61	1.53	0.55	0.53			
130	0.68	1.04	5.88	8.64	9.37	8.75	5.93	1.32	0.63	0.61	0.61	0.62	0.71	0.62	0.61	0.60			
135	0.73	0.84	5.19	8.30	9.22	8.37	5.36	1.00	0.68	0.66	0.65	0.65	0.65	0.65	0.65	0.65			
140	0.79	0.78	3.82	7.37	8.55	7.62	4.36	0.81	0.74	0.72	0.71	0.70	0.70	0.70	0.70	0.71			
145	0.83	0.81	2.63	6.37	7.70	6.66	3.16	0.83	0.77	0.76	0.75	0.74	0.72	0.73	0.73	0.75			
150	0.88	0.86	1.21	3.80	5.20	4.09	1.40	0.87	0.82	0.80	0.79	0.78	0.76	0.77	0.78	0.80			
155	0.90	0.90	0.92	1.90	2.82	2.06	0.97	0.90	0.85	0.83	0.82	0.82	0.79	0.80	0.81	0.83			
160	0.95	0.94	0.93	0.94	1.07	0.98	0.93	0.94	0.90	0.88	0.87	0.87	0.85	0.85	0.87	0.89			
165	0.98	0.97	0.96	0.94	0.97	0.96	0.96	0.97	0.93	0.92	0.91	0.90	0.90	0.89	0.91	0.93			
170	1.02	1.02	1.01	1.00	1.02	1.01	1.01	1.02	0.99	0.98	0.97	0.97	0.97	0.96	0.97	0.99			
175	1.06	1.06	1.05	1.04	1.05	1.04	1.04	1.06	1.03	1.03	1.02	1.01	1.02	1.01	1.03	1.04			
180	1.09	1.08	1.08	1.08	1.09	1.09	1.09	1.10	1.09	1.09	1.08	1.08	1.09	1.09	1.09	1.10			

C Range: 0 - 360DEG  
C Interval: 22.5DEG  
Test Speed: HIGH  
Temperature:25.3DEG  
Operators:  
Test Date:2022-04-15

□ Range: 0 - 180DEG  
□ Interval: 2.0DEG  
Test System:EVERFINE GO-2000B\_V1 SYSTEM V2.00.450  
Humidity:65.0%  
Test Distance:5.749m [K=1.0000]  
Remarks: