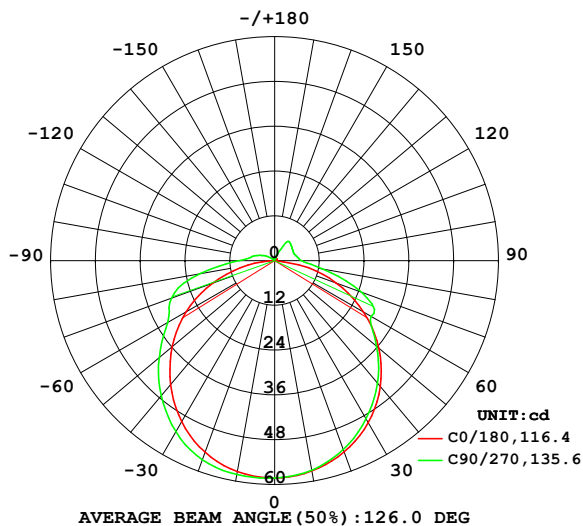


## LUMINAIRE PHOTOMETRIC TEST REPORT

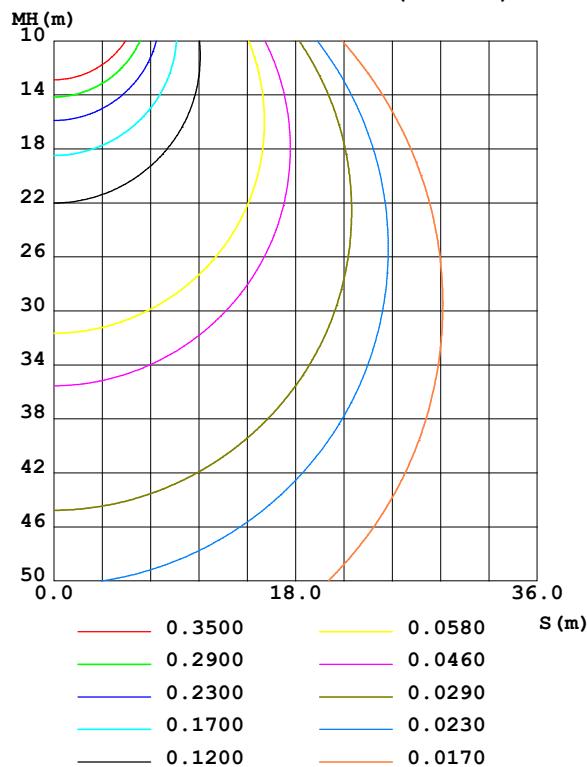
NAME: 2835 IP67	TYPE: 2835 70LED 24V	WEIGHT:
SPEC.:	DIM.:	SERIAL No.:
MFR.:	SUR.: 0.012*0.5	Shielding Angle:

DATA OF LAMP		PHOTOMETRIC DATA				Eff: 89.82 lm/W
MODEL	3000K RA90 12MM 4.8W	I <sub>max</sub> (cd)	58.36	S/MH(C0/180)	1.27	
NOMINAL POWER(W)	2.4	LOR(%)	100.0	S/MH(C90/270)	1.34	
RATED VOLTAGE(V)	24	TOTAL FLUX(lm)	208.23	□ UP,DN(C0-180)	5.0,44.1	
NOMINAL FLUX(lm)	5.94957	CIE CLASS	DIRECT	□ UP,DN(C180-360)	2.7,48.2	
LAMPS INSIDE	35	□ up (%)	7.7	CIBSE SHR NOM	1.50	
TEST VOLTAGE(V)	24	□ down (%)	92.3	CIBSE SHR MAX	1.50	

LUMINOUS INTENSITY DISTRIBUTION DIAGRAM



C0 PLANE ISOLUX DIAGRAM (UNIT:lx)



C Range: 0 - 360DEG  
C Interval: 22.5DEG  
Test Speed: HIGH  
Temperature:25.3DEG  
Operators:  
Test Date:2022-04-15

□ Range: 0 - 180DEG  
□ Interval: 2.0DEG  
Test System:EVERFINE GO-2000B\_V1 SYSTEM V2.00.450  
Humidity:65.0%  
Test Distance:5.749m [K=1.0000]  
Remarks:

## ZONAL FLUX DIAGRAM

### ZONAL FLUX DIAGRAM:

°	C0	C45	C90	C135	C180	C225	C270	C315	°	□ zone	□ total	%lum, lamp
10	57.24	57.03	57.01	57.22	57.40	57.95	58.20	57.82	0- 10	5.524	5.524	2.65,2.65
20	54.52	54.00	53.85	54.29	54.63	56.13	56.75	55.95	10- 20	15.95	21.47	10.3,10.3
30	50.17	49.34	48.99	49.55	49.82	52.37	52.95	52.28	20- 30	24.48	45.95	22.1,22.1
40	44.06	43.14	42.90	43.22	43.37	46.48	47.26	46.55	30- 40	29.95	75.90	36.5,36.5
50	36.45	35.83	35.68	35.77	35.83	39.15	40.38	39.29	40- 50	31.75	107.7	51.7,51.7
60	27.51	27.73	29.88	27.70	27.40	30.97	33.11	31.16	50- 60	29.88	137.5	66.1,66
70	17.58	21.85	24.74	21.92	17.69	24.12	29.46	24.73	60- 70	26.02	163.6	78.5,78.5
80	6.528	11.88	13.13	11.83	7.391	16.50	20.20	17.08	70- 80	19.27	182.8	87.8,87.8
90	0.0762	5.195	7.238	5.014	0.0692	6.320	9.538	6.733	80- 90	9.303	192.1	92.3,92.3
100	0.1619	4.710	6.116	4.698	0.1407	4.181	6.285	4.444	90-100	4.803	196.9	94.6,94.6
110	0.2787	4.246	5.557	4.537	0.2432	2.097	4.264	2.288	100-110	3.568	200.5	96.3,96.3
120	0.3931	4.169	5.647	4.430	0.3504	0.5565	2.486	0.6077	110-120	2.554	203.1	97.5,97.5
130	0.4955	4.179	5.998	3.972	0.4481	0.4526	0.5439	0.4371	120-130	1.901	205.0	98.4,98.4
140	0.5766	3.586	6.357	2.885	0.5267	0.4855	0.4967	0.4894	130-140	1.519	206.5	99.2,99.2
150	0.6434	1.600	4.649	1.010	0.5911	0.5569	0.5325	0.5559	140-150	1.040	207.5	99.7,99.7
160	0.6958	0.9214	1.516	0.6935	0.6530	0.6259	0.6085	0.6271	150-160	0.4353	208.0	99.9,99.9
170	0.7530	0.7639	0.7557	0.7434	0.7269	0.7045	0.7012	0.7103	160-170	0.2090	208.2	100,100
180	0.8007	0.7924	0.7962	0.7981	0.8031	0.7948	0.7962	0.7957	170-180	0.0721	208.2	100,100
DEG	LUMINOUS INTENSITY:cd									UNIT:lm		

Conical surface Flux(90deg): 94.983 lm

%lum = 45.6%

%lamp = 45.6%

Conical surface Flux(120deg): 137.54 lm

%lum = 66.1%

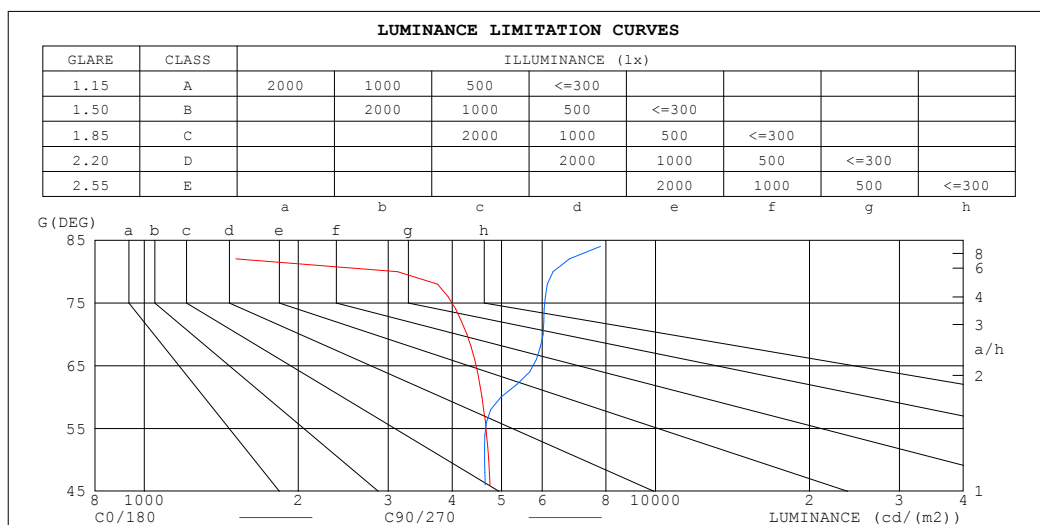
%lamp = 66.0%

C Range: 0 - 360DEG  
C Interval: 22.5DEG  
Test Speed: HIGH  
Temperature:25.3DEG  
Operators:  
Test Date:2022-04-15

□ Range: 0 - 180DEG  
□ Interval: 2.0DEG  
Test System:EVERFINE GO-2000B\_V1 SYSTEM V2.00.450  
Humidity:65.0%  
Test Distance:5.749m [K=1.0000]  
Remarks:

## LUMINANCE LIMITATION CURVES

NAME: 2835 IP67	TYPE: 2835 70LED 24V	WEIGHT:
SPEC.:	DIM.:	SERIAL No.:
MFR.:	SUR.: 0.012*0.5	Shielding Angle:



LUMINANCE cd/(m2)		
G (DEG)	C0/180	C90/270
85	159	9361
80	3126	6306
75	4329	6451
70	4273	6031
65	4653	5886
60	4575	4982
55	4788	4752
50	4716	4629
45	4842	4729

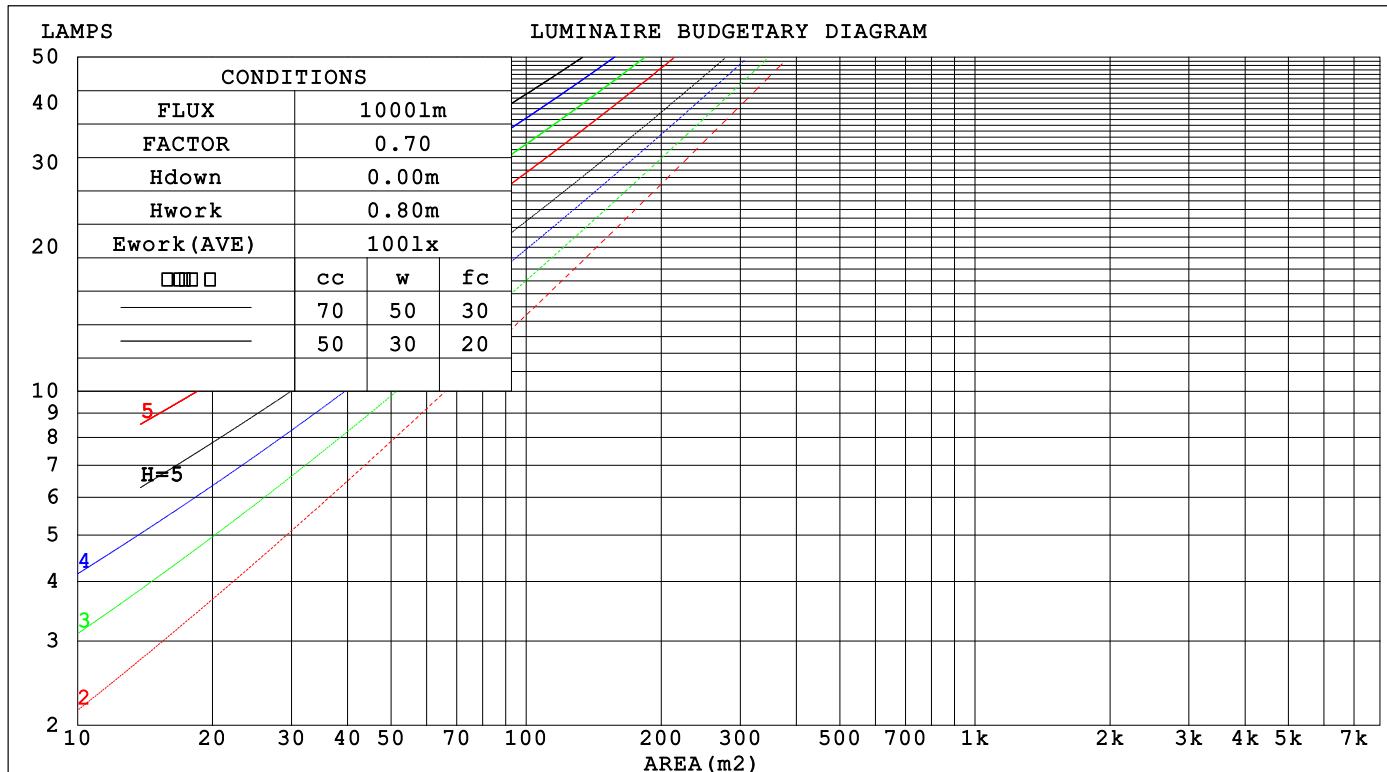
C Range: 0 - 360DEG  
C Interval: 22.5DEG  
Test Speed: HIGH  
Temperature: 25.3DEG  
Operators:  
Test Date: 2022-04-15

☐ Range: 0 - 180DEG  
☐ Interval: 2.0DEG  
Test System: EVERFINE GO-2000B\_V1 SYSTEM V2.00.450  
Humidity: 65.0%  
Test Distance: 5.749m [K=1.0000]  
Remarks:

## CU AND LUMINAIRE BUDGETARY ESTIMATE DIAGRAM

NAME: 2835 IP67	TYPE: 2835 70LED 24V	WEIGHT:
SPEC.:	DIM.:	SERIAL No.:
MFR.:	SUR.: 0.012*0.5	Shielding Angle:

□cc	80%			70%			50%			30%			10%			0
□w	50%	30%	10%	50%	30%	10%	50%	30%	10%	50%	30%	10%	50%	30%	10%	0
□fc	20%			20%			20%			20%			20%			0
RCR	RCR:Room Cavity Ratio                      Coefficients of Utilization(CU)															
0.0	1.17	1.17	1.17	1.14	1.14	1.14	1.07	1.07	1.07	1.01	1.01	1.01	.95	.95	.95	.92
1.0	.00	.95	.91	.97	.92	.88	.91	.87	.84	.86	.83	.80	.81	.79	.76	.74
2.0	.86	.78	.72	.83	.77	.71	.78	.73	.68	.74	.69	.65	.70	.66	.63	.60
3.0	.75	.66	.59	.73	.65	.58	.69	.62	.56	.65	.59	.54	.61	.56	.52	.50
4.0	.66	.57	.50	.64	.55	.49	.61	.53	.47	.57	.51	.46	.54	.49	.44	.42
5.0	.59	.49	.42	.57	.48	.42	.54	.46	.41	.51	.45	.39	.49	.43	.38	.36
6.0	.53	.43	.37	.51	.43	.36	.49	.41	.35	.46	.39	.34	.44	.38	.33	.31
7.0	.48	.39	.32	.46	.38	.32	.44	.37	.31	.42	.35	.30	.40	.34	.30	.27
8.0	.43	.35	.29	.42	.34	.28	.40	.33	.28	.38	.32	.27	.37	.31	.26	.24
9.0	.40	.31	.26	.39	.31	.25	.37	.30	.25	.35	.29	.24	.34	.28	.24	.22
10.0	.37	.29	.23	.36	.28	.23	.34	.27	.22	.33	.26	.22	.31	.26	.22	.20



C Range: 0 - 360DEG  
C Interval: 22.5DEG  
Test Speed: HIGH  
Temperature:25.3DEG  
Operators:  
Test Date:2022-04-15

□ Range: 0 - 180DEG  
□ Interval: 2.0DEG  
Test System:EVERFINE GO-2000B\_V1 SYSTEM V2.00.450  
Humidity:65.0%  
Test Distance:5.749m [K=1.0000]  
Remarks:

### WEC AND CCEC

NAME: 2835 IP67	TYPE: 2835 70LED 24V	WEIGHT:
SPEC.:	DIM.:	SERIAL No.:
MFR.:	SUR.: 0.012*0.5	Shielding Angle:

<input type="checkbox"/> cc	80%	70%	50%	30%	10%	0
<input type="checkbox"/> w	50% 30% 10%	50% 30% 10%	50% 30% 10%	50% 30% 10%	50% 30% 10%	0
<input type="checkbox"/> fc	20%	20%	20%	20%	20%	0
RCR	RCR:Room Cavity Ratio Wall Exitance Coefficients(WEC)					
0.0						
1.0	.352 .200 .063	.342 .195 .062	.324 .186 .059	.308 .177 .057	.293 .170 .055	
2.0	.317 .174 .053	.308 .170 .052	.292 .163 .050	.278 .156 .049	.264 .149 .047	
3.0	.287 .153 .046	.279 .149 .045	.265 .144 .044	.252 .138 .042	.239 .132 .041	
4.0	.261 .136 .040	.254 .133 .039	.241 .128 .038	.229 .123 .037	.218 .119 .036	
5.0	.239 .122 .035	.233 .119 .035	.221 .115 .034	.210 .111 .033	.200 .107 .032	
6.0	.220 .110 .032	.214 .108 .031	.204 .104 .030	.194 .101 .030	.185 .097 .029	
7.0	.203 .101 .029	.198 .099 .028	.189 .096 .028	.180 .092 .027	.172 .089 .026	
8.0	.189 .092 .026	.185 .091 .026	.176 .088 .025	.168 .085 .025	.160 .082 .024	
9.0	.177 .085 .024	.173 .084 .024	.165 .081 .023	.157 .079 .023	.150 .076 .022	
10.0	.166 .079 .022	.162 .078 .022	.155 .076 .021	.148 .073 .021	.142 .071 .020	

<input type="checkbox"/> cc	80%	70%	50%	30%	10%	0
<input type="checkbox"/> w	50% 30% 10%	50% 30% 10%	50% 30% 10%	50% 30% 10%	50% 30% 10%	0
<input type="checkbox"/> fc	20%	20%	20%	20%	20%	0
RCR	RCR:Room Cavity Ratio Ceiling Cavity Exitance Coefficients(CCEC)					
0.0	.249 .249 .249	.213 .213 .213	.145 .145 .145	.084 .084 .084	.027 .027 .027	
1.0	.243 .215 .190	.208 .185 .164	.142 .127 .113	.082 .074 .066	.026 .024 .021	
2.0	.235 .192 .155	.202 .165 .134	.138 .114 .093	.080 .066 .055	.026 .021 .018	
3.0	.228 .175 .132	.195 .151 .114	.134 .105 .080	.077 .061 .047	.025 .020 .016	
4.0	.220 .162 .117	.189 .140 .102	.130 .097 .072	.075 .057 .042	.024 .019 .014	
5.0	.212 .152 .107	.182 .131 .093	.126 .092 .065	.073 .054 .039	.023 .018 .013	
6.0	.205 .143 .099	.176 .124 .086	.122 .087 .061	.071 .051 .036	.023 .017 .012	
7.0	.198 .137 .093	.170 .118 .081	.118 .083 .058	.068 .049 .034	.022 .016 .011	
8.0	.191 .131 .089	.165 .114 .078	.114 .080 .055	.066 .047 .033	.021 .015 .011	
9.0	.185 .126 .086	.160 .109 .075	.111 .077 .053	.064 .045 .032	.021 .015 .011	
10.0	.179 .122 .083	.155 .106 .073	.107 .074 .052	.063 .044 .031	.020 .014 .010	

C Range: 0 - 360DEG  
C Interval: 22.5DEG  
Test Speed: HIGH  
Temperature:25.3DEG  
Operators:  
Test Date:2022-04-15

☐ Range: 0 - 180DEG  
☐ Interval: 2.0DEG  
Test System:EVERFINE GO-2000B\_V1 SYSTEM V2.00.450  
Humidity:65.0%  
Test Distance:5.749m [K=1.0000]  
Remarks:

### UGR(Unified Glare Rating) Table

NAME: 2835 IP67					TYPE: 2835 70LED 24V			WEIGHT:			
SPEC.:					DIM.:			SERIAL No.:			
MFR.:					SUR.: 0.012*0.5			Shielding Angle:			
ceiling/cavity	0.7	0.7	0.5	0.5	0.3	0.7	0.7	0.5	0.5	0.3	
walls	0.5	0.3	0.5	0.3	0.3	0.5	0.3	0.5	0.3	0.3	
working plane	0.2	0.2	0.2	0.2	0.2	0.2	0.2	0.2	0.2	0.2	
Room dimensions		Viewed crosswise					Viewed endwise				
x = 2H y = 2H	2H	22.9	24.4	23.3	24.8	25.1	23.3	24.7	23.6	25.1	25.5
	3H	24.6	25.9	25.0	26.3	26.7	25.7	27.1	26.1	27.4	27.8
	4H	25.3	26.6	25.7	26.9	27.4	26.7	28.0	27.1	28.4	28.8
	6H	25.7	27.0	26.2	27.4	27.8	27.5	28.7	27.9	29.1	29.6
	8H	25.7	26.9	26.2	27.3	27.8	27.8	29.0	28.3	29.5	29.9
	12H	25.7	26.8	26.2	27.3	27.7	28.2	29.4	28.7	29.8	30.3
4H	2H	23.7	25.0	24.1	25.4	25.8	24.0	25.2	24.4	25.6	26.1
	3H	25.5	26.7	26.0	27.1	27.6	26.6	27.7	27.0	28.1	28.6
	4H	26.4	27.4	26.9	27.9	28.4	27.7	28.8	28.2	29.2	29.7
	6H	27.0	28.0	27.5	28.4	29.0	28.7	29.6	29.2	30.1	30.6
	8H	27.1	28.0	27.6	28.5	29.0	29.1	30.0	29.6	30.5	31.0
	12H	27.1	27.9	27.6	28.4	29.0	29.5	30.4	30.1	30.9	31.4
8H	4H	26.9	27.8	27.5	28.3	28.9	28.0	28.9	28.6	29.4	30.0
	6H	27.8	28.5	28.3	29.1	29.6	29.2	29.9	29.8	30.5	31.1
	8H	28.0	28.6	28.6	29.2	29.8	29.8	30.4	30.3	31.0	31.6
	12H	28.1	28.7	28.7	29.2	29.9	30.4	30.9	31.0	31.5	32.2
12H	4H	27.0	27.8	27.5	28.3	28.9	28.1	28.9	28.6	29.4	30.0
	6H	27.9	28.6	28.5	29.2	29.8	29.3	29.9	29.8	30.5	31.1
	8H	28.2	28.8	28.8	29.4	30.0	29.9	30.5	30.5	31.0	31.7
Variations with the observer position at spacings(CIE Pub.117):											
S = 1.0H		+ 0.1 / - 0.2					+ 0.1 / - 0.1				
1.5H		+ 0.1 / - 0.2					+ 0.1 / - 0.2				
2.0H		+ 0.1 / - 0.2					+ 0.2 / - 0.3				

CIE Pub.117, 208.2 lm Total Lamp Luminous Flux Correct (8log(F/F0) = -5.5)  
Area: 0.012 m2

C Range: 0 - 360DEG  
C Interval: 22.5DEG  
Test Speed: HIGH  
Temperature:25.3DEG  
Operators:  
Test Date:2022-04-15

☐ Range: 0 - 180DEG  
☐ Interval: 2.0DEG  
Test System:EVERFINE GO-2000B\_V1 SYSTEM V2.00.450  
Humidity:65.0%  
Test Distance:5.749m [K=1.0000]  
Remarks:

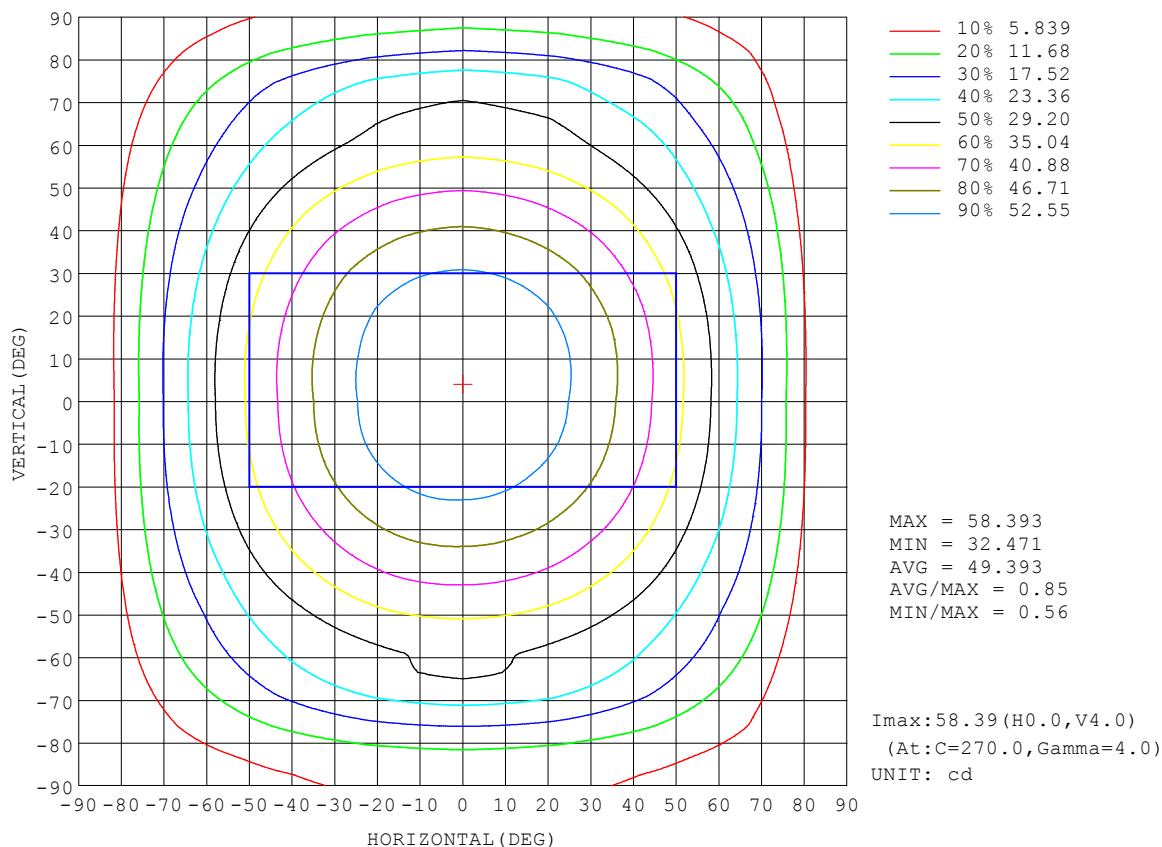
```

Range: 0 - 180DEG
Interval: 2.0DEG
Test System:EVERFINE GO-2000B_V1 SYSTEM V2.00.450
Humidity:65.0%
Test Distance:5.749m [K=1.0000]
Remarks:

```

### ISOCANDELA DIAGRAM

NAME: 2835 IP67	TYPE: 2835 70LED 24V	WEIGHT:
SPEC.:	DIM.:	SERIAL No.:
MFR.:	SUR.: 0.012*0.5	Shielding Angle:



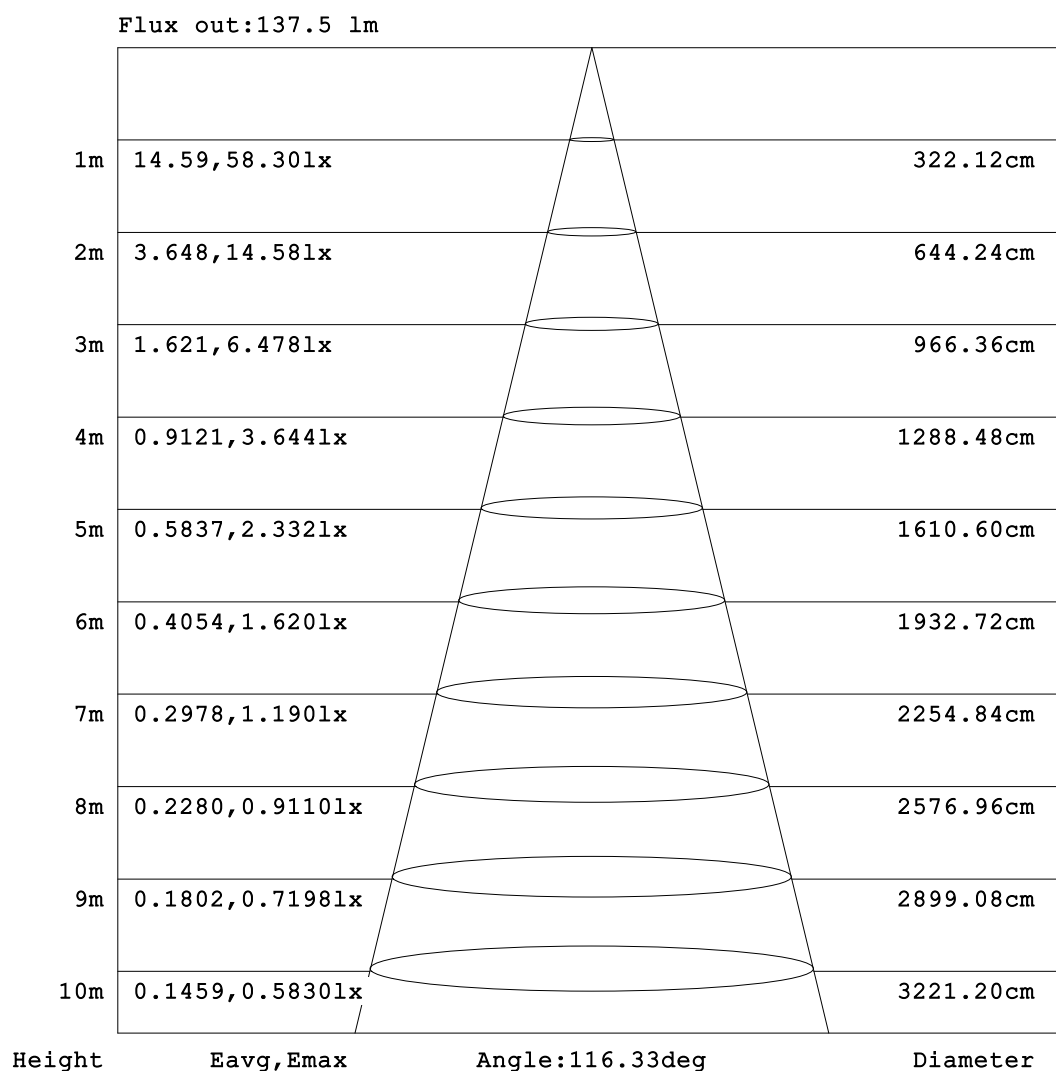
C Range: 0 - 360DEG  
C Interval: 22.5DEG  
Test Speed: HIGH  
Temperature: 25.3DEG  
Operators:  
Test Date: 2022-04-15

☐ Range: 0 - 180DEG  
☐ Interval: 2.0DEG  
Test System: EVERFINE GO-2000B\_V1 SYSTEM V2.00.450  
Humidity: 65.0%  
Test Distance: 5.749m [K=1.0000]  
Remarks:



**AAI Figure**

NAME: 2835 IP67	TYPE: 2835 70LED 24V	WEIGHT:
SPEC.:	DIM.:	SERIAL No.:
MFR.:	SUR.: 0.012*0.5	Shielding Angle:



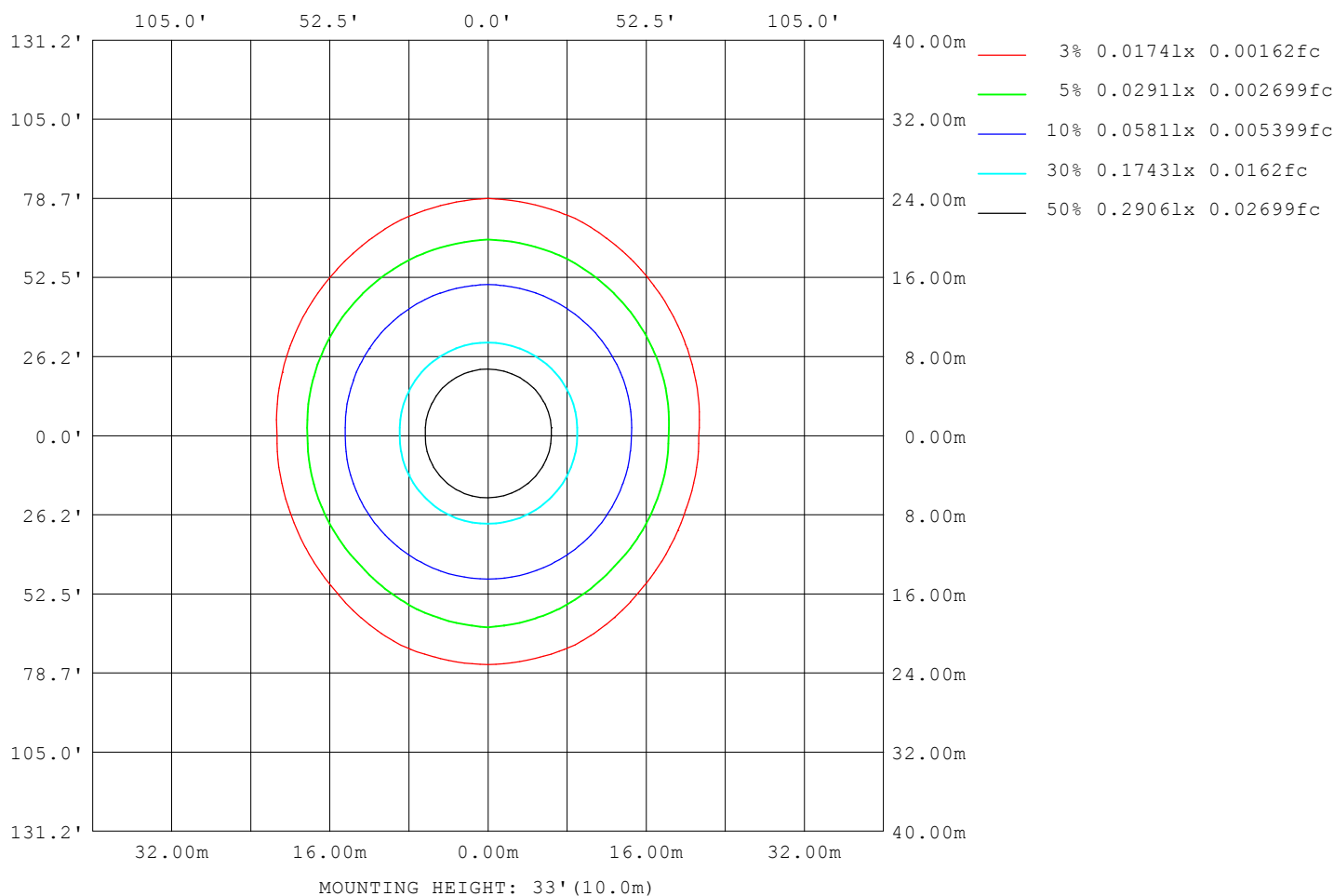
**Note:**The Curves indicate the illuminated area and the average illumination when the luminaire is at different distance.

C Range: 0 - 360DEG  
 C Interval: 22.5DEG  
 Test Speed: HIGH  
 Temperature:25.3DEG  
 Operators:  
 Test Date:2022-04-15

☐ Range: 0 - 180DEG  
☐ Interval: 2.0DEG  
 Test System:EVERFINE GO-2000B\_V1 SYSTEM V2.00.450  
 Humidity:65.0%  
 Test Distance:5.749m [K=1.0000]  
 Remarks:

### ISOLUX DIAGRAM

NAME: 2835 IP67	TYPE: 2835 70LED 24V	WEIGHT:
SPEC.:	DIM.:	SERIAL No.:
MFR.:	SUR.: 0.012*0.5	Shielding Angle:



C Range: 0 - 360DEG  
C Interval: 22.5DEG  
Test Speed: HIGH  
Temperature:25.3DEG  
Operators:  
Test Date:2022-04-15

☐ Range: 0 - 180DEG  
☐ Interval: 2.0DEG  
Test System:EVERFINE GO-2000B\_V1 SYSTEM V2.00.450  
Humidity:65.0%  
Test Distance:5.749m [K=1.0000]  
Remarks:

## LED Avg.L Report

NAME: 2835 IP67	TYPE: 2835 70LED 24V	WEIGHT:
SPEC.:	DIM.:	SERIAL No.:
MFR.:	SUR.: 0.012*0.5	Shielding Angle:

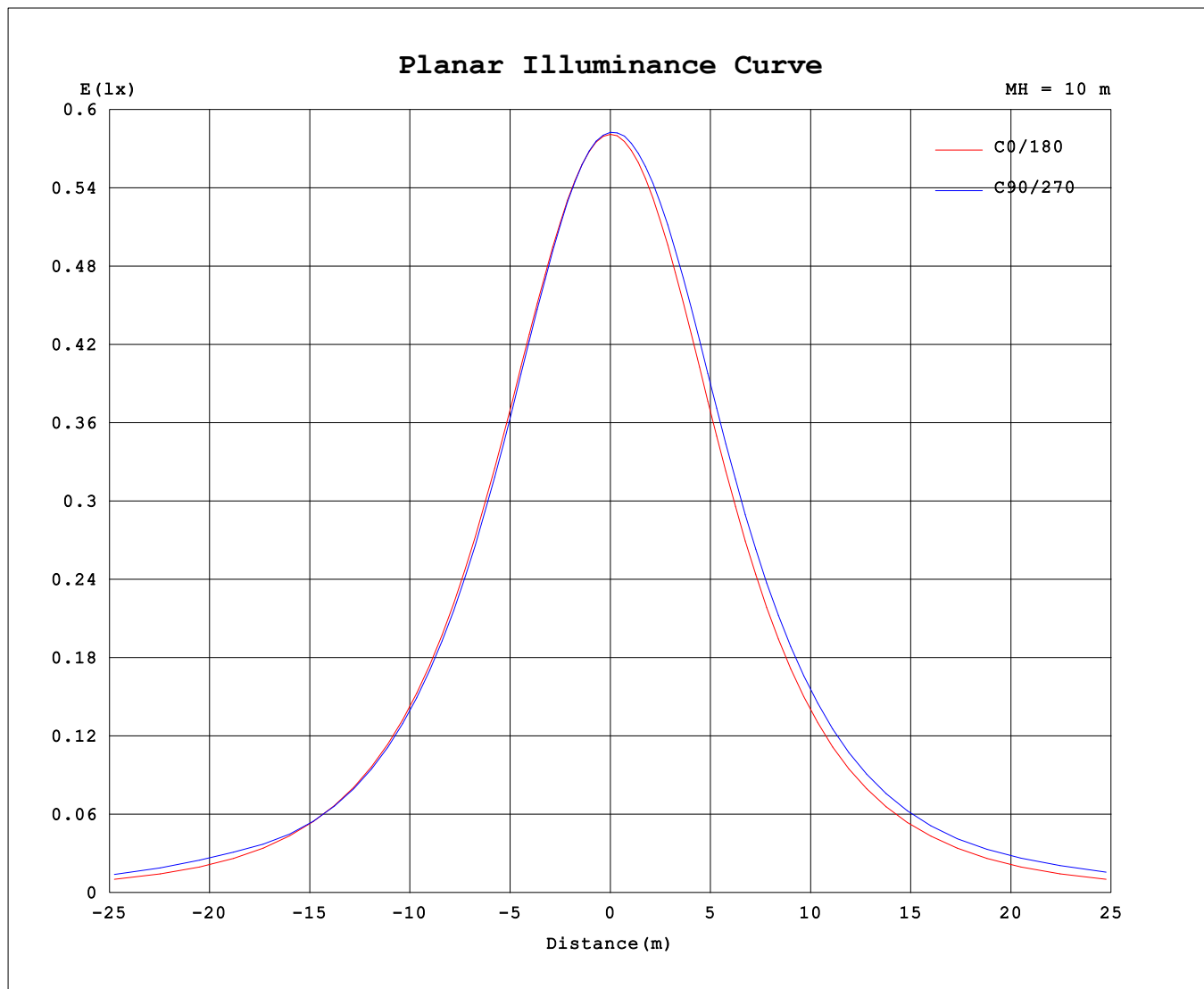
AvgL	cd/m2
L_0~180 (65) av	4473
L_0~180 (75) av	4016
L_0~180 (85) av	1191
L_90~270 (65) av	5968
L_90~270 (75) av	7242
L_90~270 (85) av	11122
L_45 (65) av	5120
L_45 (75) av	6153
L_45 (85) av	8543

Standard: GB/T 29293-2012

C Range: 0 - 360DEG  
C Interval: 22.5DEG  
Test Speed: HIGH  
Temperature: 25.3DEG  
Operators:  
Test Date: 2022-04-15

☐ Range: 0 - 180DEG  
☐ Interval: 2.0DEG  
Test System: EVERFINE GO-2000B\_V1 SYSTEM V2.00.450  
Humidity: 65.0%  
Test Distance: 5.749m [K=1.0000]  
Remarks:

### Planar Illuminance Curve



C Range: 0 - 360DEG  
 C Interval: 22.5DEG  
 Test Speed: HIGH  
 Temperature: 25.3DEG  
 Operators:  
 Test Date: 2022-04-15

☐ Range: 0 - 180DEG  
☐ Interval: 2.0DEG  
 Test System: EVERFINE GO-2000B\_V1 SYSTEM V2.00.450  
 Humidity: 65.0%  
 Test Distance: 5.749m [K=1.0000]  
 Remarks:

## LUMINOUS DISTRIBUTION INTENSITY DATA

NAME: 2835 IP67	TYPE: 2835 70LED 24V	WEIGHT:
SPEC.:	DIM.:	SERIAL No.:
MFR.:	SUR.: 0.012*0.5	Shielding Angle:

Table--1

UNIT: cd

C (DEG) □ (DEG)	0	22.5	45	67.5	90	112.5	135	157.5	180	202.5	225	247.5	270	292.5	315	337.5			
0	58.2	58.2	58.2	58.2	58.2	58.2	58.2	58.2	58.2	58.2	58.2	58.2	58.2	58.2	58.2	58.2			
5	58.1	58.0	58.0	58.0	58.0	58.0	58.0	58.0	58.1	58.2	58.3	58.3	58.4	58.3	58.2	58.1			
10	57.2	57.1	57.0	57.0	57.0	57.1	57.2	57.3	57.4	57.6	57.9	58.1	58.2	58.1	57.8	57.5			
15	56.3	56.2	56.0	56.0	56.0	56.1	56.3	56.4	56.5	56.9	57.4	57.8	57.9	57.7	57.2	56.7			
20	54.5	54.3	54.0	53.9	53.9	54.1	54.3	54.5	54.6	55.2	56.1	56.6	56.8	56.5	56.0	55.1			
25	53.0	52.7	52.3	52.1	52.1	52.4	52.6	52.8	53.0	53.8	54.9	55.4	55.5	55.2	54.7	53.8			
30	50.2	49.8	49.3	49.0	49.0	49.3	49.6	49.8	49.8	50.9	52.4	52.9	52.9	52.7	52.3	51.3			
35	47.9	47.6	47.0	46.7	46.7	47.0	47.2	47.4	47.4	48.7	50.2	50.8	50.8	50.6	50.2	49.2			
40	44.1	43.7	43.1	42.9	42.9	43.2	43.2	43.4	43.4	44.9	46.5	47.1	47.3	46.9	46.6	45.6			
45	41.2	40.8	40.3	40.2	40.1	40.4	40.4	40.5	40.4	42.1	43.7	44.4	44.7	44.3	43.8	42.8			
50	36.5	36.1	35.8	35.7	35.7	35.9	35.8	35.9	35.8	37.5	39.1	40.1	40.4	39.9	39.3	38.2			
55	33.0	32.8	32.6	32.6	32.7	32.8	32.6	32.6	32.6	34.3	36.0	37.0	37.4	36.9	36.1	34.8			
60	27.5	27.5	27.7	28.8	29.9	28.8	27.7	27.5	27.4	29.2	31.0	32.3	33.1	32.5	31.2	29.5			
65	23.6	23.8	25.0	28.4	29.8	28.6	25.2	24.0	23.7	25.7	27.8	30.0	31.5	30.5	28.1	25.8			
70	17.6	18.5	21.8	24.3	24.7	24.1	21.9	18.8	17.7	20.4	24.1	27.9	29.5	27.9	24.7	20.5			
75	13.5	15.0	18.5	19.9	20.0	19.7	18.4	15.3	13.5	16.7	21.3	25.5	27.0	25.4	21.5	17.1			
80	6.53	9.90	11.9	12.8	13.1	12.8	11.8	10.1	7.39	11.8	16.5	18.9	20.2	19.3	17.1	12.0			
85	0.17	6.23	7.93	9.21	9.78	9.16	7.83	6.25	3.50	7.98	11.7	14.0	15.2	14.3	12.1	8.41			
90	0.08	3.06	5.19	6.63	7.24	6.45	5.01	3.01	0.07	3.43	6.32	8.32	9.54	8.67	6.73	3.81			
95	0.10	2.74	4.86	6.20	6.67	6.04	4.77	2.78	0.09	2.64	4.91	6.48	7.48	6.87	5.25	2.92			
100	0.16	2.57	4.71	5.79	6.12	5.83	4.70	2.80	0.14	1.35	4.18	5.70	6.28	5.85	4.44	1.68			
105	0.21	2.44	4.50	5.54	5.85	5.66	4.63	2.71	0.18	0.60	2.44	5.10	5.63	5.10	3.60	0.84			
110	0.28	2.09	4.25	5.22	5.56	5.40	4.54	2.38	0.24	0.27	2.10	3.71	4.26	3.71	2.29	0.32			
115	0.33	1.90	4.20	5.22	5.56	5.40	4.52	2.17	0.29	0.29	1.43	2.26	3.50	2.99	1.55	0.29			
120	0.39	1.66	4.17	5.29	5.65	5.48	4.43	1.83	0.35	0.33	0.56	1.31	2.49	1.92	0.61	0.33			
125	0.44	1.44	4.18	5.39	5.74	5.56	4.32	1.57	0.39	0.37	0.46	0.83	1.43	0.97	0.47	0.37			
130	0.50	1.15	4.18	5.59	6.00	5.72	3.97	1.09	0.45	0.42	0.45	0.56	0.54	0.58	0.44	0.42			
135	0.52	1.03	4.15	5.70	6.14	5.61	3.65	0.97	0.48	0.46	0.45	0.50	0.46	0.50	0.45	0.46			
140	0.58	0.86	3.59	5.92	6.36	5.37	2.89	0.70	0.53	0.50	0.49	0.48	0.50	0.50	0.49	0.50			
145	0.60	0.80	2.49	5.74	6.43	5.28	1.77	0.61	0.55	0.53	0.52	0.51	0.50	0.51	0.51	0.53			
150	0.64	0.74	1.60	3.39	4.65	2.60	1.01	0.64	0.59	0.57	0.56	0.55	0.53	0.54	0.56	0.57			
155	0.66	0.71	1.21	2.19	2.68	1.27	0.69	0.66	0.62	0.60	0.58	0.58	0.56	0.57	0.58	0.61			
160	0.70	0.72	0.92	1.29	1.52	0.74	0.69	0.69	0.65	0.64	0.63	0.62	0.61	0.61	0.63	0.65			
165	0.72	0.73	0.80	1.00	1.13	0.72	0.71	0.71	0.68	0.67	0.65	0.65	0.65	0.64	0.66	0.68			
170	0.75	0.75	0.76	0.78	0.76	0.75	0.74	0.75	0.73	0.71	0.70	0.70	0.70	0.70	0.71	0.73			
175	0.78	0.77	0.78	0.77	0.78	0.77	0.77	0.77	0.76	0.75	0.74	0.74	0.74	0.74	0.75	0.76			
180	0.80	0.80	0.79	0.79	0.80	0.79	0.80	0.80	0.80	0.80	0.79	0.79	0.80	0.79	0.80	0.80			

C Range: 0 - 360DEG

C Interval: 22.5DEG

Test Speed: HIGH

Temperature:25.3DEG

Operators:

Test Date:2022-04-15

□ Range: 0 - 180DEG

□ Interval: 2.0DEG

Test System:EVERFINE GO-2000B\_V1 SYSTEM V2.00.450

Humidity:65.0%

Test Distance:5.749m [K=1.0000]

Remarks: