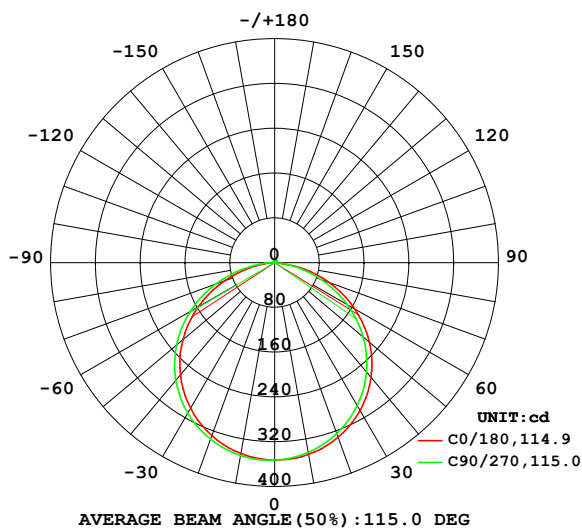


LUMINAIRE PHOTOMETRIC TEST REPORT

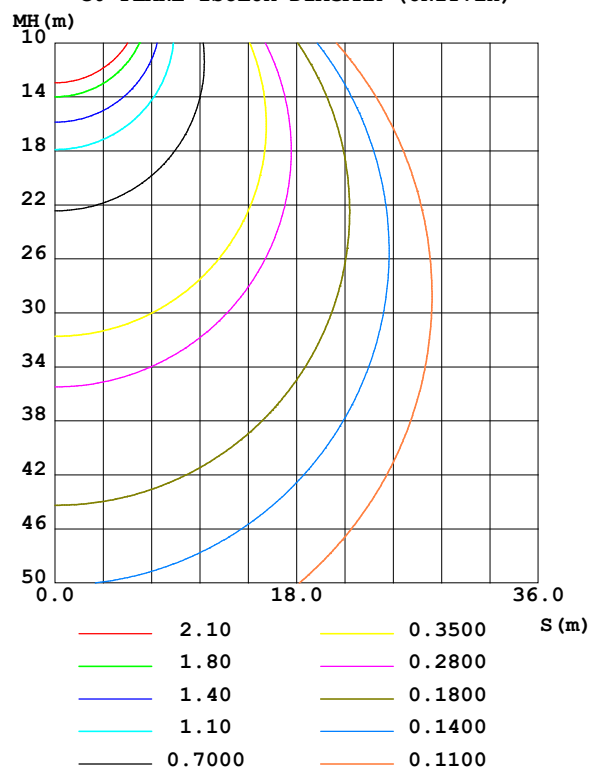
NAME: 2835 IP20	TYPE: 2835 210LED 24V	WEIGHT:
SPEC.: 202-00032-00	DIM.:	SERIAL No.:
MFR.:	SUR.: 0.01*0.5	Shielding Angle:

DATA OF LAMP		PHOTOMETRIC DATA				Eff: 111.79 lm/W
MODEL	4000K	I _{max} (cd)	353.1	S/MH(C0/180)	1.27	
NOMINAL POWER(W)	9.6	LOR(%)	100.0	S/MH(C90/270)	1.31	
RATED VOLTAGE(V)	24	TOTAL FLUX(lm)	1043.9	□ UP,DN(C0-180)	0.7,47.7	
NOMINAL FLUX(lm)	4.97094	CIE CLASS	DIRECT	□ UP,DN(C180-360)	0.6,50.9	
LAMPS INSIDE	210	□ up (%)	1.3	CIBSE SHR NOM	1.25	
TEST VOLTAGE(V)	24	□ down (%)	98.7	CIBSE SHR MAX	1.35	

LUMINOUS INTENSITY DISTRIBUTION DIAGRAM



C0 PLANE ISOLUX DIAGRAM (UNIT:lx)



C Range: 0 - 360DEG
 C Interval: 22.5DEG
 Test Speed: HIGH
 Temperature:25.3DEG
 Operators:
 Test Date:2022-03-16

□ Range: 0 - 180DEG
 □ Interval: 2.0DEG
 Test System:EVERFINE GO-2000B_V1 SYSTEM V2.00.450
 Humidity:65.0%
 Test Distance:5.749m [K=1.0000]
 Remarks:

ZONAL FLUX DIAGRAM

ZONAL FLUX DIAGRAM:

°	C0	C45	C90	C135	C180	C225	C270	C315	°	□ zone	□ total	%lum, lamp
10	347.9	345.6	344.3	344.7	346.4	348.7	349.9	349.6	0- 10	33.41	33.41	3.2,3.2
20	332.0	327.4	324.8	325.6	328.8	333.3	335.7	335.2	10- 20	96.02	129.4	12.4,12.4
30	305.1	298.7	294.9	295.9	300.5	307.0	310.5	309.7	20- 30	146.5	276.0	26.4,26.4
40	267.9	259.9	255.2	256.4	262.0	270.2	274.7	273.7	30- 40	178.4	454.3	43.5,43.5
50	221.1	212.0	206.6	207.8	214.0	223.7	228.9	227.6	40- 50	187.0	641.3	61.4,61.4
60	165.5	155.8	150.1	151.1	157.6	168.1	173.9	172.5	50- 60	170.3	811.7	77.8,77.8
70	103.1	93.57	87.96	88.76	94.81	105.4	111.5	110.1	60- 70	129.6	941.3	90.2,90.2
80	36.71	33.69	29.03	29.77	34.31	42.62	47.45	46.40	70- 80	71.71	1013	97,97
90	0.3259	1.517	1.016	1.025	0.3361	2.821	3.502	3.448	80- 90	16.99	1030	98.7,98.7
100	0.8161	0.9321	1.072	0.9763	0.7674	0.6929	0.6540	0.6494	90-100	0.9397	1031	98.8,98.8
110	1.554	1.619	1.694	1.672	1.430	1.257	1.208	1.210	100-110	1.183	1032	98.9,98.9
120	2.297	2.293	2.376	2.357	2.115	1.868	1.828	1.824	110-120	1.762	1034	99,99
130	2.954	2.892	2.958	2.966	2.730	2.454	2.399	2.408	120-130	2.160	1036	99.2,99.2
140	3.478	3.385	3.422	3.474	3.222	2.970	2.859	2.915	130-140	2.295	1038	99.5,99.5
150	3.903	3.830	3.812	3.898	3.625	3.415	3.266	3.369	140-150	2.150	1040	99.7,99.7
160	4.250	4.206	4.246	4.226	3.996	3.829	3.753	3.815	150-160	1.771	1042	99.8,99.8
170	4.591	4.565	4.622	4.544	4.420	4.314	4.305	4.338	160-170	1.197	1043	100,100
180	4.886	4.856	4.931	4.887	4.884	4.856	4.931	4.889	170-180	0.4407	1044	100,100
DEG	LUMINOUS INTENSITY:cd									UNIT:lm		

Conical surface Flux(90deg): 567.11 lm

%lum = 54.3%

%lamp = 54.3%

Conical surface Flux(120deg): 811.68 lm

%lum = 77.8%

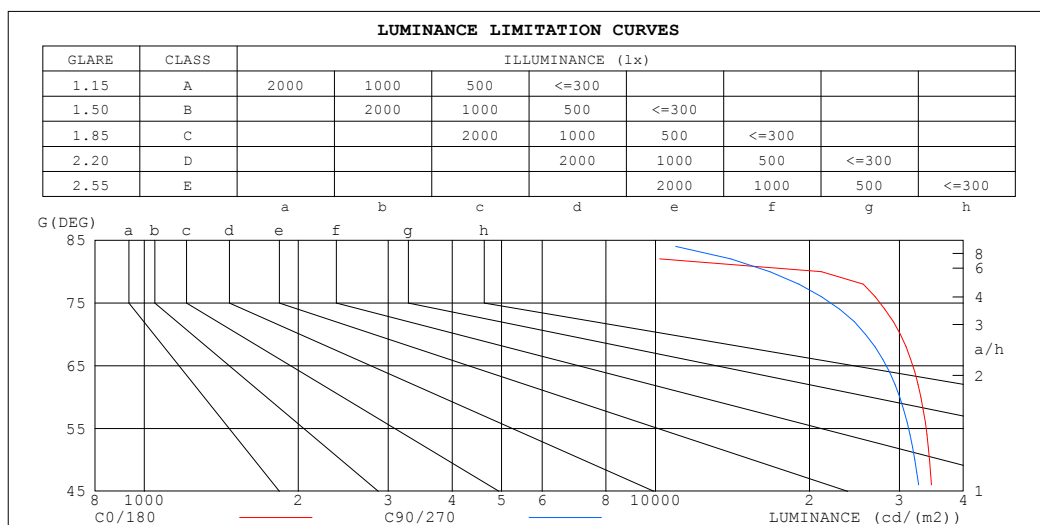
%lamp = 77.8%

C Range: 0 - 360DEG
C Interval: 22.5DEG
Test Speed: HIGH
Temperature:25.3DEG
Operators:
Test Date:2022-03-16

□ Range: 0 - 180DEG
□ Interval: 2.0DEG
Test System:EVERFINE GO-2000B_V1 SYSTEM V2.00.450
Humidity:65.0%
Test Distance:5.749m [K=1.0000]
Remarks:

LUMINANCE LIMITATION CURVES

NAME: 2835 IP20	TYPE: 2835 210LED 24V	WEIGHT:
SPEC.: 202-00032-00	DIM.:	SERIAL No.:
MFR.:	SUR.: 0.01*0.5	Shielding Angle:



LUMINANCE cd/(m2)		
G (DEG)	C0/180	C90/270
85	480	13136
80	21114	16728
75	29918	24414
70	30110	25736
65	33364	29744
60	33064	30030
55	34786	32242
50	34347	32158
45	35356	33510

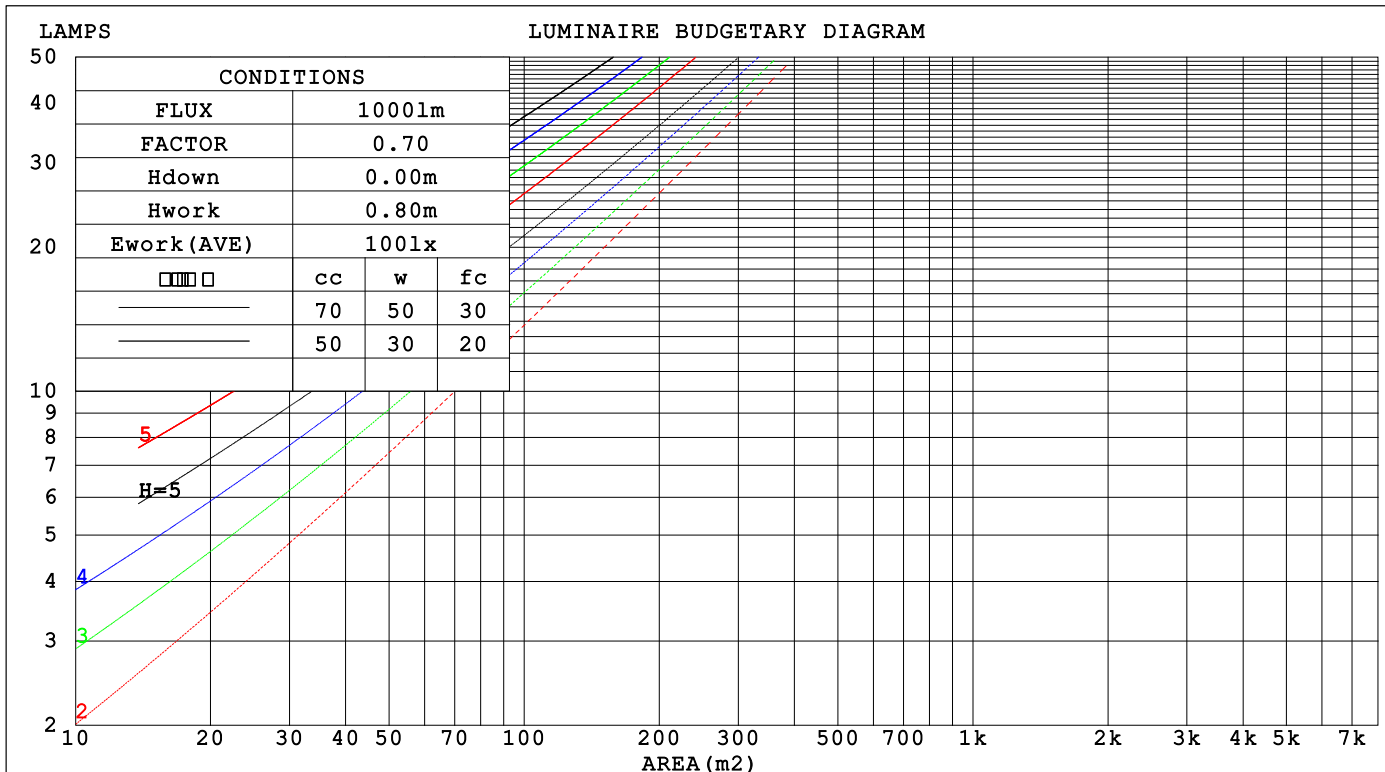
C Range: 0 - 360DEG
 C Interval: 22.5DEG
 Test Speed: HIGH
 Temperature: 25.3DEG
 Operators:
 Test Date: 2022-03-16

☐ Range: 0 - 180DEG
☐ Interval: 2.0DEG
 Test System: EVERFINE GO-2000B_V1 SYSTEM V2.00.450
 Humidity: 65.0%
 Test Distance: 5.749m [K=1.0000]
 Remarks:

CU AND LUMINAIRE BUDGETARY ESTIMATE DIAGRAM

NAME: 2835 IP20	TYPE: 2835 210LED 24V	WEIGHT:
SPEC.: 202-00032-00	DIM.:	SERIAL No.:
MFR.:	SUR.: 0.01*0.5	Shielding Angle:

□cc	80%			70%			50%			30%			10%			0
□w	50%	30%	10%	50%	30%	10%	50%	30%	10%	50%	30%	10%	50%	30%	10%	0
□fc	20%			20%			20%			20%			20%			0
RCR	RCR:Room Cavity Ratio Coefficients of Utilization(CU)															
0.0	1.19	1.19	1.19	1.16	1.16	1.16	1.10	1.10	1.10	1.05	1.05	1.05	1.01	1.01	1.01	.99
1.0	1.04	.99	.96	1.01	.97	.94	.97	.94	.91	.93	.90	.88	.89	.87	.85	.83
2.0	.90	.83	.78	.88	.82	.77	.84	.79	.75	.81	.77	.73	.78	.74	.71	.69
3.0	.79	.71	.64	.77	.70	.64	.74	.68	.62	.71	.66	.61	.69	.64	.60	.58
4.0	.70	.61	.54	.69	.60	.54	.66	.59	.53	.63	.57	.52	.61	.56	.51	.49
5.0	.62	.53	.47	.61	.53	.46	.59	.51	.46	.57	.50	.45	.55	.49	.44	.42
6.0	.56	.47	.41	.55	.47	.40	.53	.46	.40	.51	.45	.39	.50	.44	.39	.37
7.0	.51	.42	.36	.50	.42	.36	.48	.41	.35	.47	.40	.35	.45	.39	.35	.33
8.0	.46	.38	.32	.46	.37	.32	.44	.37	.31	.43	.36	.31	.41	.35	.31	.29
9.0	.42	.34	.29	.42	.34	.29	.41	.33	.28	.39	.33	.28	.38	.32	.28	.26
10.0	.39	.31	.26	.39	.31	.26	.37	.30	.26	.36	.30	.25	.35	.30	.25	.24



C Range: 0 - 360DEG
C Interval: 22.5DEG
Test Speed: HIGH
Temperature:25.3DEG
Operators:
Test Date:2022-03-16

□ Range: 0 - 180DEG
□ Interval: 2.0DEG
Test System:EVERFINE GO-2000B_V1 SYSTEM V2.00.450
Humidity:65.0%
Test Distance:5.749m [K=1.0000]
Remarks:

WEC AND CCEC

NAME: 2835 IP20	TYPE: 2835 210LED 24V	WEIGHT:
SPEC.: 202-00032-00	DIM.:	SERIAL No.:
MFR.:	SUR.: 0.01*0.5	Shielding Angle:

<input type="checkbox"/> cc	80%	70%	50%	30%	10%	0
<input type="checkbox"/> w	50% 30% 10%	50% 30% 10%	50% 30% 10%	50% 30% 10%	50% 30% 10%	0
<input type="checkbox"/> fc	20%	20%	20%	20%	20%	0
RCR	RCR:Room Cavity Ratio Wall Exitance Coefficients(WEC)					
0.0						
1.0	.308 .175 .055	.300 .171 .054	.286 .164 .052	.273 .158 .051	.262 .152 .049	
2.0	.291 .159 .049	.284 .157 .048	.272 .151 .047	.261 .146 .046	.250 .141 .045	
3.0	.270 .144 .043	.264 .141 .043	.253 .137 .042	.243 .133 .041	.233 .129 .040	
4.0	.249 .129 .038	.244 .128 .038	.234 .124 .037	.225 .121 .036	.217 .118 .036	
5.0	.230 .117 .034	.226 .116 .034	.217 .113 .033	.209 .110 .033	.201 .108 .032	
6.0	.214 .107 .031	.210 .106 .030	.202 .103 .030	.195 .101 .030	.188 .099 .029	
7.0	.199 .098 .028	.195 .097 .028	.188 .095 .027	.182 .093 .027	.176 .091 .027	
8.0	.186 .091 .026	.183 .090 .025	.176 .088 .025	.170 .086 .025	.165 .085 .025	
9.0	.174 .084 .024	.171 .083 .023	.166 .082 .023	.160 .080 .023	.155 .079 .023	
10.0	.164 .079 .022	.161 .078 .022	.156 .076 .022	.151 .075 .021	.147 .074 .021	

<input type="checkbox"/> cc	80%	70%	50%	30%	10%	0
<input type="checkbox"/> w	50% 30% 10%	50% 30% 10%	50% 30% 10%	50% 30% 10%	50% 30% 10%	0
<input type="checkbox"/> fc	20%	20%	20%	20%	20%	0
RCR	RCR:Room Cavity Ratio Ceiling Cavity Exitance Coefficients(CCEC)					
0.0	.201 .201 .201	.171 .171 .171	.117 .117 .117	.067 .067 .067	.021 .021 .021	
1.0	.190 .166 .145	.163 .143 .125	.111 .098 .086	.064 .057 .050	.021 .018 .016	
2.0	.182 .142 .108	.156 .122 .094	.107 .085 .065	.062 .049 .038	.020 .016 .012	
3.0	.175 .125 .085	.150 .108 .073	.103 .075 .051	.059 .044 .030	.019 .014 .010	
4.0	.167 .111 .069	.144 .096 .060	.099 .067 .042	.057 .039 .025	.018 .013 .008	
5.0	.160 .101 .058	.137 .087 .050	.095 .061 .035	.055 .036 .021	.018 .012 .007	
6.0	.153 .093 .050	.131 .080 .043	.091 .056 .031	.053 .033 .018	.017 .011 .006	
7.0	.146 .086 .044	.126 .074 .038	.087 .052 .027	.050 .031 .016	.016 .010 .005	
8.0	.140 .080 .039	.120 .069 .034	.083 .049 .024	.048 .029 .014	.016 .009 .005	
9.0	.133 .075 .036	.115 .065 .031	.080 .046 .022	.046 .027 .013	.015 .009 .004	
10.0	.128 .071 .033	.110 .062 .029	.076 .043 .020	.045 .026 .012	.014 .008 .004	

C Range: 0 - 360DEG
C Interval: 22.5DEG
Test Speed: HIGH
Temperature:25.3DEG
Operators:
Test Date:2022-03-16

☐ Range: 0 - 180DEG
☐ Interval: 2.0DEG
Test System:EVERFINE GO-2000B_V1 SYSTEM V2.00.450
Humidity:65.0%
Test Distance:5.749m [K=1.0000]
Remarks:

UGR(Unified Glare Rating) Table

NAME: 2835 IP20					TYPE: 2835 210LED 24V			WEIGHT:			
SPEC.: 202-00032-00					DIM.:			SERIAL No.:			
MFR.:					SUR.: 0.01*0.5			Shielding Angle:			
ceiling/cavity	0.7	0.7	0.5	0.5	0.3	0.7	0.7	0.5	0.5	0.3	
walls	0.5	0.3	0.5	0.3	0.3	0.5	0.3	0.5	0.3	0.3	
working plane	0.2	0.2	0.2	0.2	0.2	0.2	0.2	0.2	0.2	0.2	
Room dimensions		Viewed crosswise					Viewed endwise				
x = 2H y = 2H	2H	24.9	26.4	25.2	26.6	26.9	24.5	26.0	24.8	26.3	26.5
	3H	26.4	27.8	26.7	28.1	28.3	25.9	27.3	26.2	27.6	27.8
	4H	27.0	28.3	27.3	28.6	28.9	26.4	27.7	26.7	28.0	28.3
	6H	27.4	28.6	27.8	28.9	29.3	26.6	27.9	27.0	28.2	28.5
	8H	27.4	28.6	27.8	28.9	29.2	26.7	27.9	27.0	28.2	28.5
	12H	27.3	28.5	27.7	28.8	29.2	26.7	27.8	27.0	28.1	28.5
4H	2H	25.4	26.8	25.8	27.0	27.3	25.2	26.5	25.5	26.8	27.0
	3H	27.1	28.3	27.5	28.6	28.9	26.7	27.9	27.1	28.2	28.5
	4H	27.8	28.9	28.2	29.2	29.6	27.3	28.3	27.7	28.7	29.0
	6H	28.3	29.3	28.8	29.6	30.0	27.6	28.6	28.0	28.9	29.3
	8H	28.4	29.2	28.8	29.6	30.0	27.7	28.6	28.1	29.0	29.4
	12H	28.3	29.1	28.8	29.5	30.0	27.7	28.5	28.2	28.9	29.3
8H	4H	28.0	28.9	28.5	29.3	29.7	27.5	28.4	28.0	28.8	29.2
	6H	28.6	29.4	29.1	29.8	30.2	28.0	28.7	28.4	29.1	29.6
	8H	28.7	29.4	29.2	29.8	30.3	28.1	28.7	28.6	29.2	29.7
	12H	28.7	29.3	29.2	29.8	30.3	28.1	28.7	28.6	29.2	29.7
12H	4H	28.0	28.8	28.5	29.2	29.7	27.5	28.3	28.0	28.7	29.2
	6H	28.7	29.3	29.1	29.7	30.2	28.0	28.7	28.5	29.1	29.6
	8H	28.8	29.3	29.3	29.8	30.3	28.2	28.7	28.7	29.2	29.7
Variations with the observer position at spacings(CIE Pub.117):											
S = 1.0H		+ 0.1 / - 0.2					+ 0.2 / - 0.2				
1.5H		+ 0.1 / - 0.3					+ 0.2 / - 0.4				
2.0H		+ 0.2 / - 0.2					+ 0.2 / - 0.3				

CIE Pub.117, 1044 lm Total Lamp Luminous Flux Correct (8log(F/F0) = 0.1)
Area: 0.01 m2

C Range: 0 - 360DEG
C Interval: 22.5DEG
Test Speed: HIGH
Temperature:25.3DEG
Operators:
Test Date:2022-03-16

☐ Range: 0 - 180DEG
☐ Interval: 2.0DEG
Test System:EVERFINE GO-2000B_V1 SYSTEM V2.00.450
Humidity:65.0%
Test Distance:5.749m [K=1.0000]
Remarks:

UTILIZATION FACTORS TABLE

NAME: 2835 IP20	TYPE: 2835 210LED 24V	WEIGHT:
SPEC.: 202-00032-00	DIM.:	SERIAL No.:
MFR.:	SUR.: 0.01*0.5	Shielding Angle:

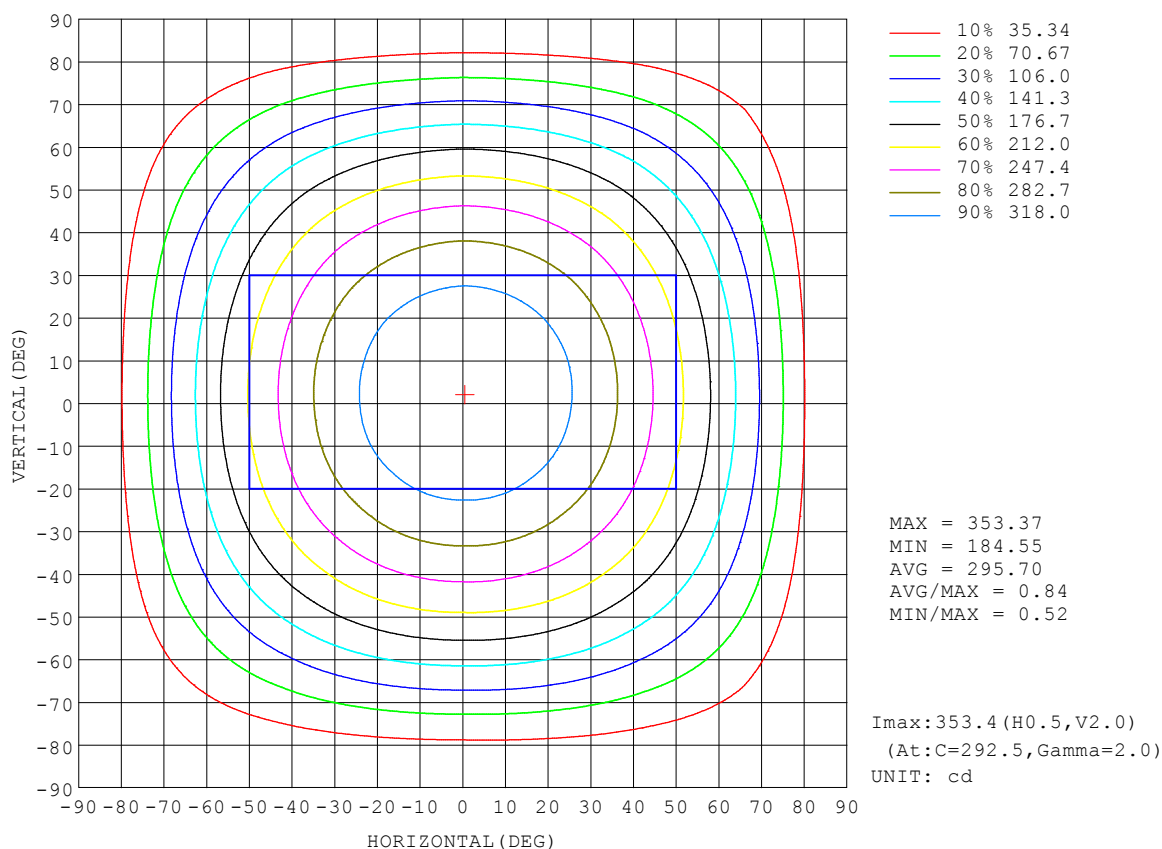
REFLECTANCE										
Ceiling	0.8	0.8	0.8	0.7	0.7	0.7	0.5	0.5	0.5	0
Walls	0.7	0.5	0.3	0.7	0.5	0.3	0.7	0.5	0.3	0
Working plane	0.2	0.2	0.2	0.2	0.2	0.2	0.2	0.2	0.2	0
ROOM INDEX	UTILIZATION FACTORS (PERCENT) k(RI) x RCR = 5									
k = 0.60	57	45	38	56	45	38	55	44	38	31
0.80	67	55	48	66	55	48	64	54	47	40
1.00	75	64	57	74	64	57	72	65	56	49
1.25	83	72	65	81	71	64	78	70	63	56
1.50	88	78	71	86	77	70	83	75	69	61
2.00	95	86	79	93	85	79	89	82	77	69
2.50	98	91	85	96	89	84	92	86	82	73
3.00	102	95	89	100	93	88	95	90	86	77
4.00	106	100	96	103	98	94	99	95	91	82
5.00	108	103	99	106	101	98	101	98	94	85
ROOM INDEX	UF(total)									Direct
According to DIN EN 13032-2 2004										
Suspended										
SHRNOM = 1.25										

C Range: 0 - 360DEG
C Interval: 22.5DEG
Test Speed: HIGH
Temperature: 25.3DEG
Operators:
Test Date: 2022-03-16

☐ Range: 0 - 180DEG
☐ Interval: 2.0DEG
Test System: EVERFINE GO-2000B_V1 SYSTEM V2.00.450
Humidity: 65.0%
Test Distance: 5.749m [K=1.0000]
Remarks:

ISOCANDELA DIAGRAM

NAME: 2835 IP20	TYPE: 2835 210LED 24V	WEIGHT:
SPEC.: 202-00032-00	DIM.:	SERIAL No.:
MFR.:	SUR.: 0.01*0.5	Shielding Angle:

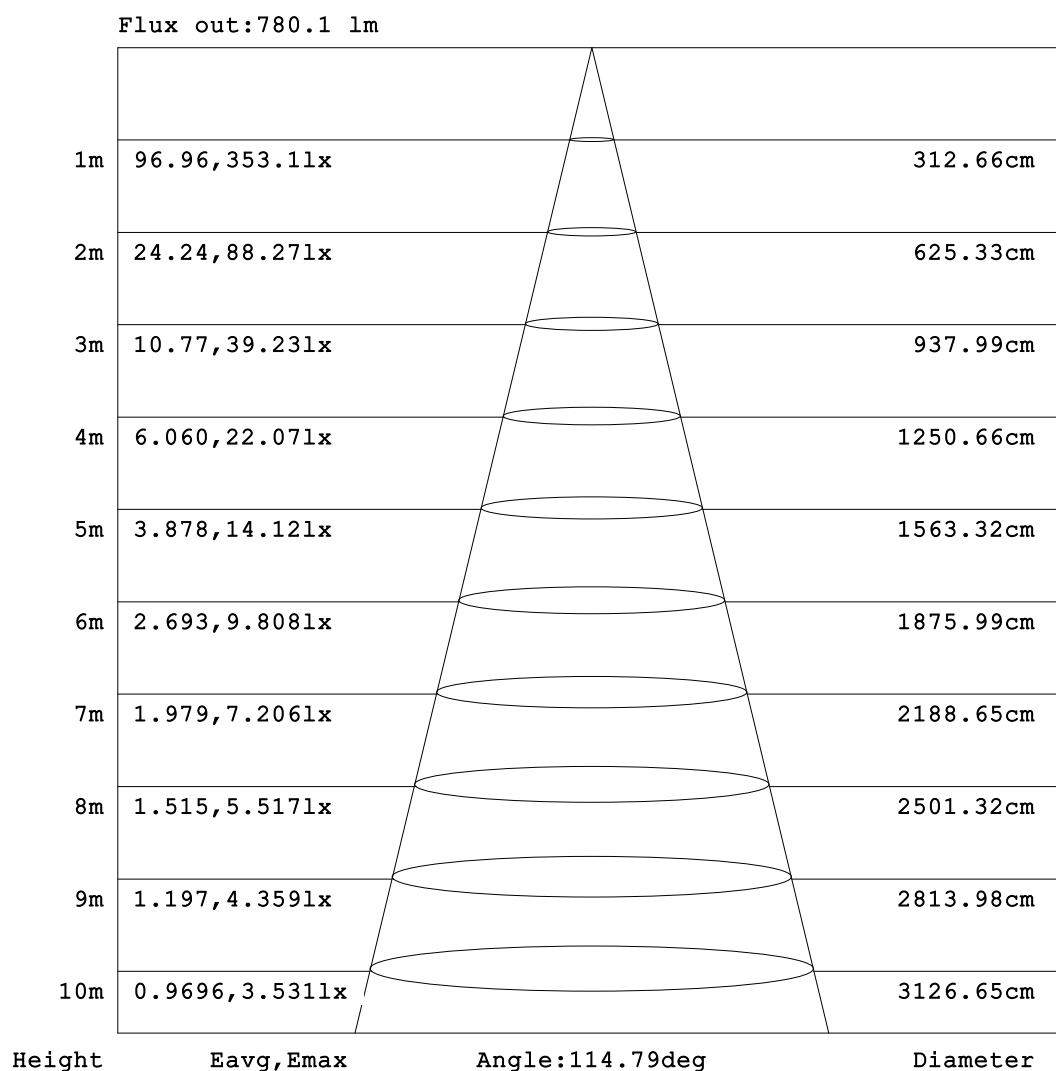


C Range: 0 - 360DEG
C Interval: 22.5DEG
Test Speed: HIGH
Temperature: 25.3DEG
Operators:
Test Date: 2022-03-16

☐ Range: 0 - 180DEG
☐ Interval: 2.0DEG
Test System: EVERFINE GO-2000B_V1 SYSTEM V2.00.450
Humidity: 65.0%
Test Distance: 5.749m [K=1.0000]
Remarks:

AAI Figure

NAME: 2835 IP20	TYPE: 2835 210LED 24V	WEIGHT:
SPEC.: 202-00032-00	DIM.:	SERIAL No.:
MFR.:	SUR.: 0.01*0.5	Shielding Angle:



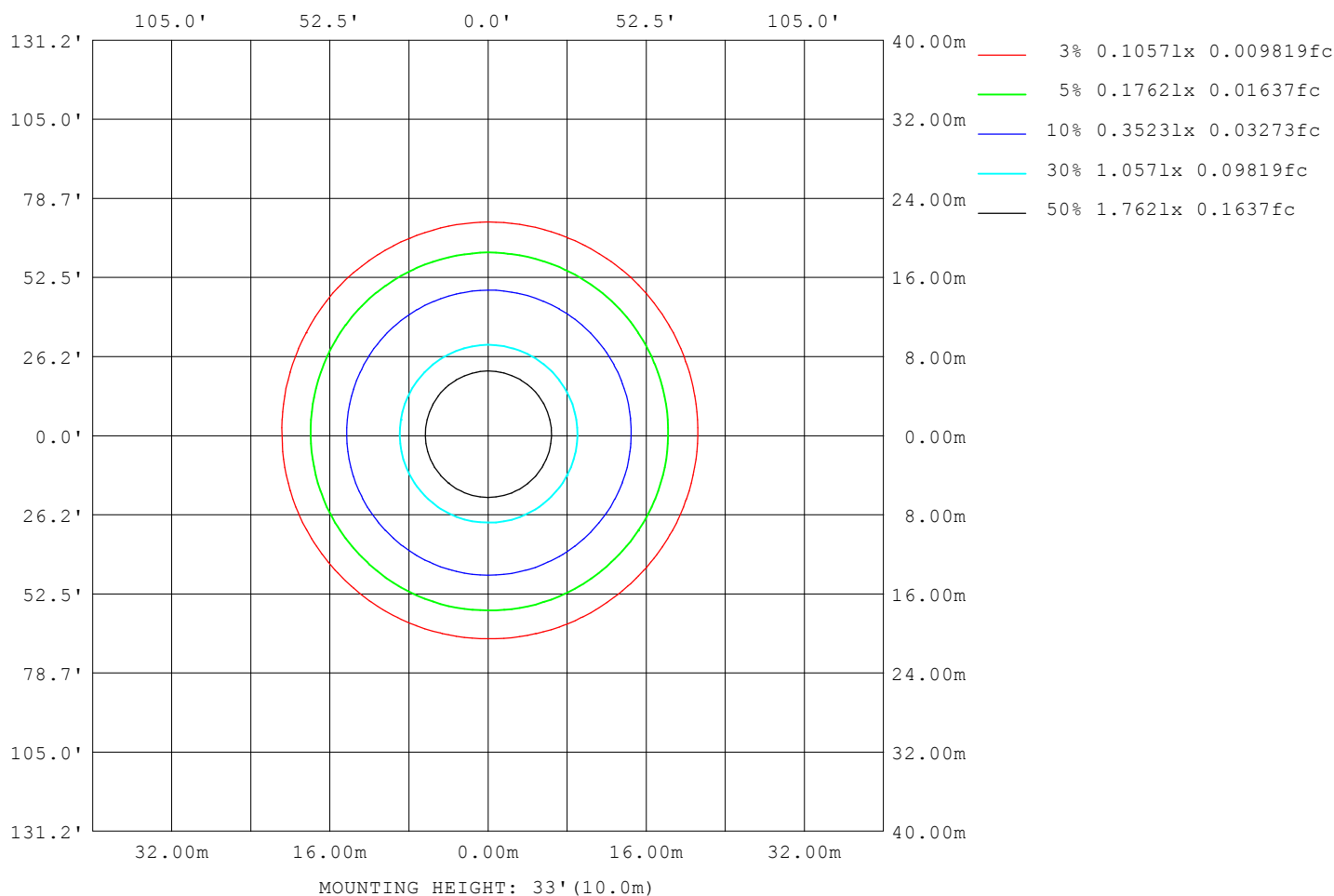
Note: The Curves indicate the illuminated area and the average illumination when the luminaire is at different distance.

C Range: 0 - 360DEG
 C Interval: 22.5DEG
 Test Speed: HIGH
 Temperature: 25.3DEG
 Operators:
 Test Date: 2022-03-16

☐ Range: 0 - 180DEG
☐ Interval: 2.0DEG
 Test System: EVERFINE GO-2000B_V1 SYSTEM V2.00.450
 Humidity: 65.0%
 Test Distance: 5.749m [K=1.0000]
 Remarks:

ISOLUX DIAGRAM

NAME: 2835 IP20	TYPE: 2835 210LED 24V	WEIGHT:
SPEC.: 202-00032-00	DIM.:	SERIAL No.:
MFR.:	SUR.: 0.01*0.5	Shielding Angle:



C Range: 0 - 360DEG
C Interval: 22.5DEG
Test Speed: HIGH
Temperature: 25.3DEG
Operators:
Test Date: 2022-03-16

☐ Range: 0 - 180DEG
☐ Interval: 2.0DEG
Test System: EVERFINE GO-2000B_V1 SYSTEM V2.00.450
Humidity: 65.0%
Test Distance: 5.749m [K=1.0000]
Remarks:

LED Avg.L Report

NAME: 2835 IP20	TYPE: 2835 210LED 24V	WEIGHT:
SPEC.: 202-00032-00	DIM.:	SERIAL No.:
MFR.:	SUR.: 0.01*0.5	Shielding Angle:

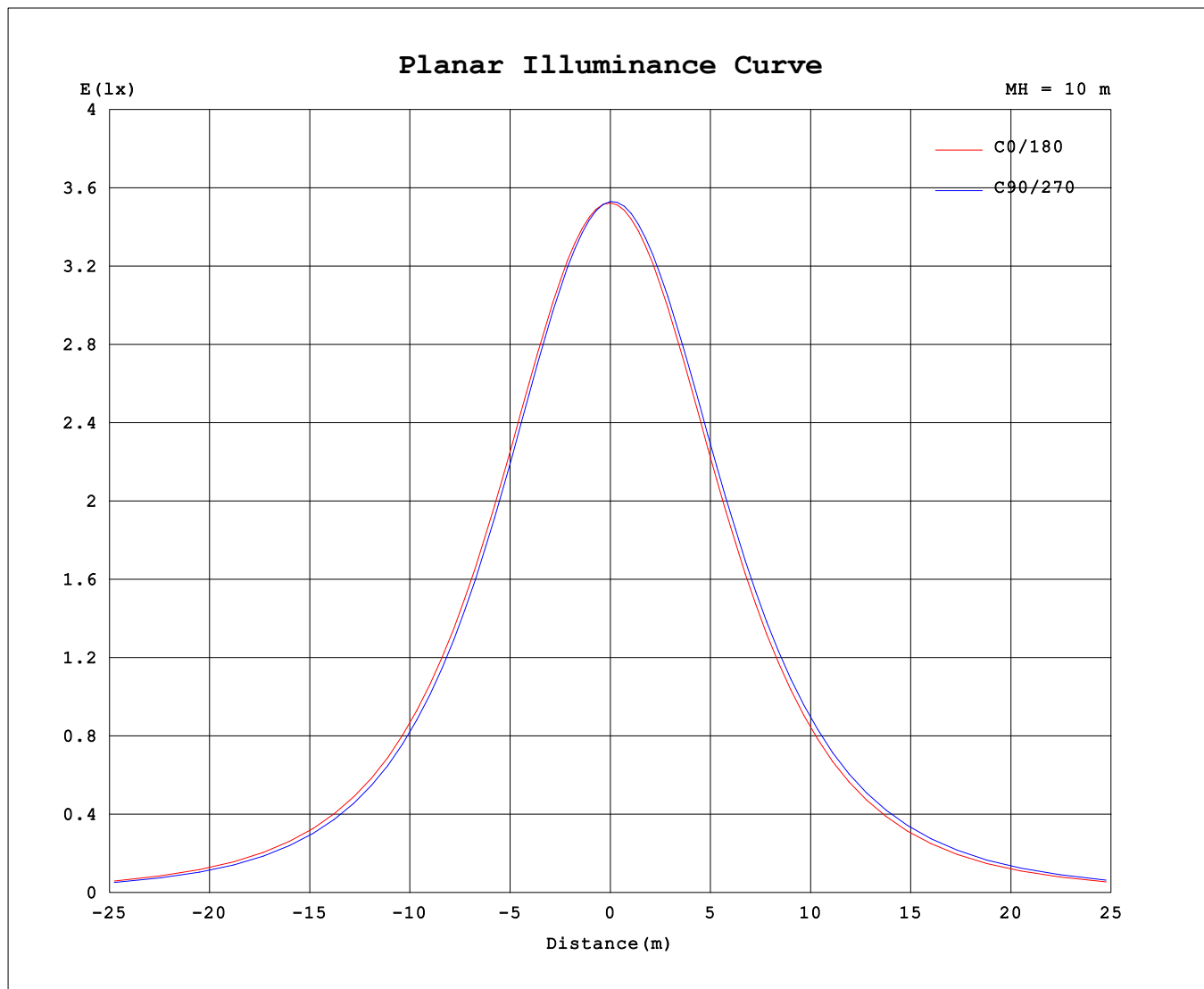
AvgL	cd/m2
L_0~180 (65) av	30953
L_0~180 (75) av	26001
L_0~180 (85) av	4904
L_90~270 (65) av	31107
L_90~270 (75) av	26270
L_90~270 (85) av	16421
L_45 (65) av	31064
L_45 (75) av	26157
L_45 (85) av	16906

Standard: GB/T 29293-2012

C Range: 0 - 360DEG
 C Interval: 22.5DEG
 Test Speed: HIGH
 Temperature: 25.3DEG
 Operators:
 Test Date: 2022-03-16

☐ Range: 0 - 180DEG
☐ Interval: 2.0DEG
 Test System: EVERFINE GO-2000B_V1 SYSTEM V2.00.450
 Humidity: 65.0%
 Test Distance: 5.749m [K=1.0000]
 Remarks:

Planar Illuminance Curve



C Range: 0 - 360DEG
 C Interval: 22.5DEG
 Test Speed: HIGH
 Temperature: 25.3DEG
 Operators:
 Test Date: 2022-03-16

☐ Range: 0 - 180DEG
☐ Interval: 2.0DEG
 Test System: EVERFINE GO-2000B_V1 SYSTEM V2.00.450
 Humidity: 65.0%
 Test Distance: 5.749m [K=1.0000]
 Remarks:

LUMINOUS DISTRIBUTION INTENSITY DATA

NAME: 2835 IP20	TYPE: 2835 210LED 24V	WEIGHT:
SPEC.: 202-00032-00	DIM.:	SERIAL No.:
MFR.:	SUR.: 0.01*0.5	Shielding Angle:

Table--1

UNIT: cd

C (DEG) □ (DEG)	0	22.5	45	67.5	90	112.5	135	157.5	180	202.5	225	247.5	270	292.5	315	337.5			
0	353	353	353	353	353	353	353	353	353	353	353	353	353	353	353	353			
5	352	352	351	351	351	351	351	351	352	352	353	353	353	353	353	353			
10	348	347	346	345	344	344	345	345	346	347	349	349	350	350	350	349			
15	343	341	340	339	338	338	338	339	341	342	344	345	346	345	345	344			
20	332	330	327	326	325	325	326	327	329	331	333	335	336	336	335	334			
25	322	320	317	315	314	314	315	317	319	321	324	326	327	327	326	325			
30	305	302	299	297	295	295	296	298	301	304	307	309	311	310	310	308			
35	291	288	284	282	280	280	281	284	286	290	294	296	297	297	297	294			
40	268	264	260	257	255	256	256	259	262	266	270	273	275	274	274	271			
45	250	246	242	239	237	237	238	241	244	248	253	255	258	257	256	254			
50	221	217	212	209	207	207	208	211	214	218	224	226	229	228	228	225			
55	200	196	190	188	185	185	186	189	192	197	202	206	208	207	207	203			
60	166	161	156	153	150	151	151	154	158	162	168	171	174	173	173	169			
65	141	137	131	129	126	126	127	130	133	138	144	147	150	149	148	145			
70	103	99.0	93.6	90.8	88.0	88.4	88.8	91.8	94.8	99.4	105	109	112	111	110	106			
75	77.5	73.6	68.6	65.7	63.1	63.4	63.8	66.6	69.5	74.0	79.5	82.6	85.5	84.7	84.0	80.4			
80	36.7	38.0	33.7	31.2	29.0	29.2	29.8	32.1	34.3	38.1	42.6	45.1	47.4	46.9	46.4	43.8			
85	0.42	18.7	15.5	13.3	11.4	11.8	12.5	13.9	12.8	18.2	22.0	23.8	25.3	25.1	25.1	23.0			
90	0.33	1.82	1.52	1.23	1.02	0.99	1.02	1.11	0.34	1.59	2.82	3.22	3.50	3.45	3.45	2.47			
95	0.48	0.57	0.78	0.90	0.95	0.94	0.83	0.62	0.47	0.46	0.61	0.69	0.67	0.65	0.61	0.42			
100	0.82	0.87	0.93	1.02	1.07	1.04	0.98	0.93	0.77	0.72	0.69	0.67	0.65	0.65	0.65	0.66			
105	1.10	1.13	1.20	1.24	1.27	1.26	1.25	1.20	1.02	0.93	0.90	0.88	0.85	0.85	0.85	0.87			
110	1.55	1.55	1.62	1.66	1.69	1.69	1.67	1.63	1.43	1.30	1.26	1.23	1.21	1.20	1.21	1.23			
115	1.86	1.84	1.90	1.94	1.97	1.97	1.96	1.92	1.71	1.56	1.50	1.47	1.45	1.45	1.45	1.48			
120	2.30	2.24	2.29	2.34	2.38	2.37	2.36	2.33	2.12	1.94	1.87	1.83	1.83	1.81	1.82	1.87			
125	2.57	2.50	2.55	2.59	2.62	2.62	2.61	2.59	2.37	2.20	2.11	2.07	2.07	2.05	2.07	2.11			
130	2.95	2.88	2.89	2.92	2.96	2.97	2.97	2.96	2.73	2.57	2.45	2.41	2.40	2.39	2.41	2.48			
135	3.18	3.11	3.10	3.13	3.16	3.19	3.18	3.19	2.94	2.79	2.67	2.62	2.60	2.60	2.62	2.71			
140	3.48	3.42	3.38	3.39	3.42	3.49	3.47	3.49	3.22	3.08	2.97	2.91	2.86	2.89	2.91	3.03			
145	3.66	3.62	3.57	3.56	3.58	3.66	3.66	3.66	3.39	3.26	3.16	3.10	3.03	3.06	3.10	3.22			
150	3.90	3.87	3.83	3.78	3.81	3.90	3.90	3.90	3.62	3.50	3.41	3.36	3.27	3.31	3.37	3.49			
155	4.05	4.02	3.99	3.94	3.98	4.06	4.04	4.03	3.77	3.66	3.58	3.54	3.45	3.47	3.54	3.66			
160	4.25	4.24	4.21	4.16	4.25	4.27	4.23	4.23	4.00	3.90	3.83	3.81	3.75	3.75	3.82	3.93			
165	4.38	4.38	4.34	4.31	4.42	4.38	4.35	4.35	4.16	4.08	4.01	3.99	3.98	3.95	4.01	4.13			
170	4.59	4.59	4.57	4.54	4.62	4.58	4.54	4.56	4.42	4.36	4.31	4.30	4.30	4.28	4.34	4.43			
175	4.74	4.74	4.73	4.71	4.77	4.72	4.70	4.72	4.61	4.57	4.53	4.53	4.55	4.52	4.57	4.63			
180	4.89	4.86	4.86	4.87	4.93	4.88	4.89	4.91	4.88	4.86	4.86	4.87	4.93	4.89	4.89	4.91			

C Range: 0 - 360DEG
C Interval: 22.5DEG
Test Speed: HIGH
Temperature:25.3DEG
Operators:
Test Date:2022-03-16

□ Range: 0 - 180DEG
□ Interval: 2.0DEG
Test System:EVERFINE GO-2000B_V1 SYSTEM V2.00.450
Humidity:65.0%
Test Distance:5.749m [K=1.0000]
Remarks: