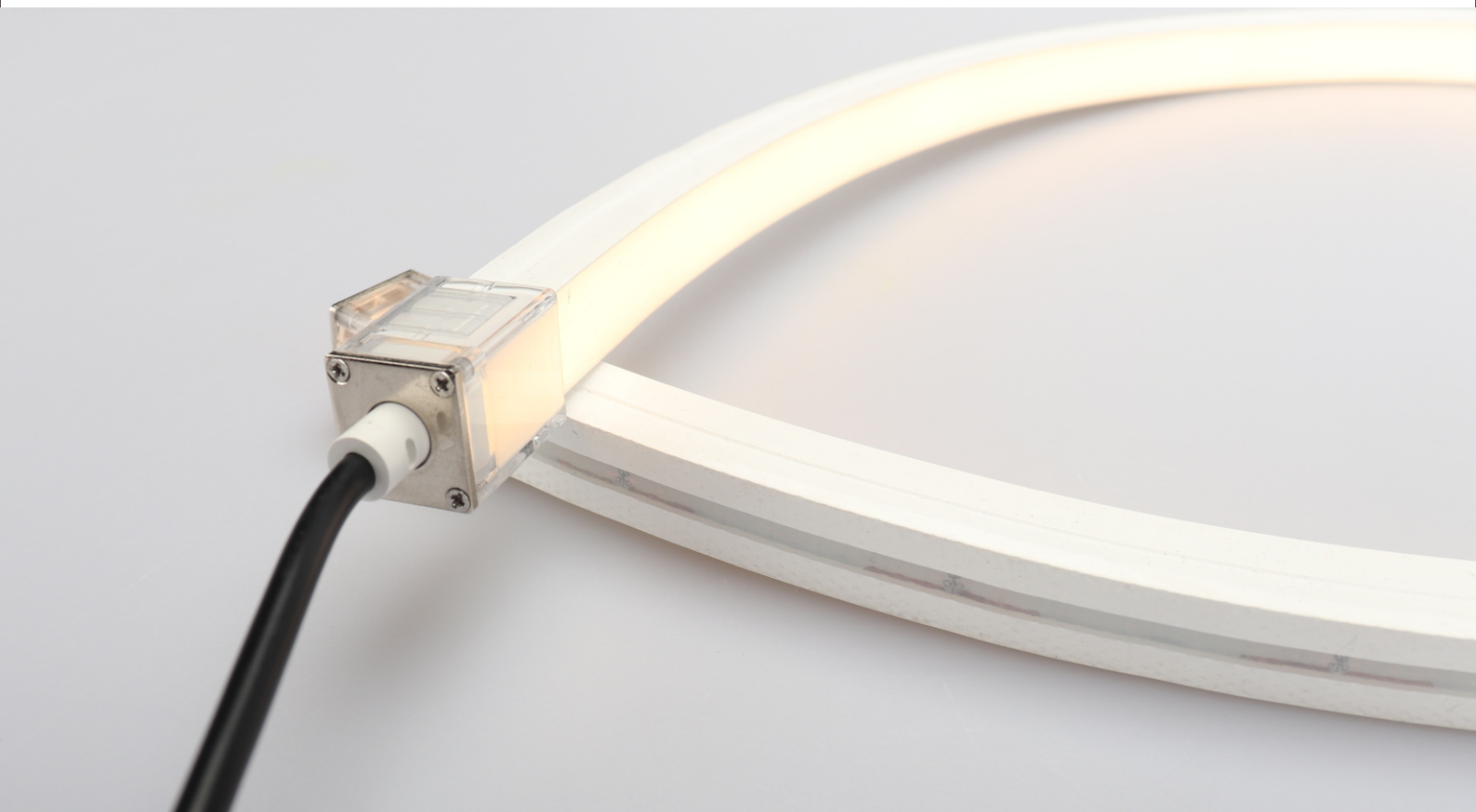




# LED NEON FLEX SPECIFICATION

IP65 / IP67 NEON 1615 MINI CUTTING TOP VIEW



Note: LEDYI may change product specifications and installation guidance without prior notice.

Regular power 5W/m,10W/m and 15W/m for option

Max length 5 meters with one end power

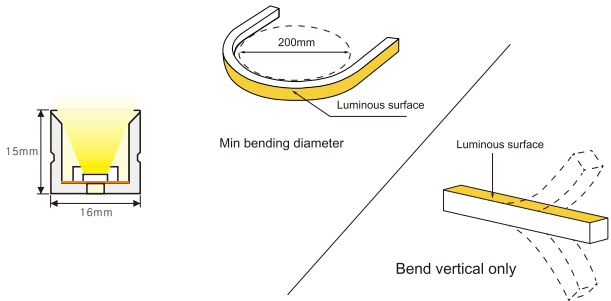
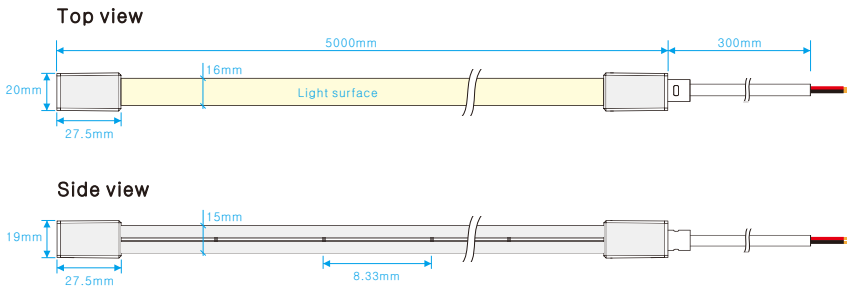
Soldering-free and silicone end cap

Eight CCT optional from 2700K to 6000K

2700K  
3000K  
4000K  
6000K



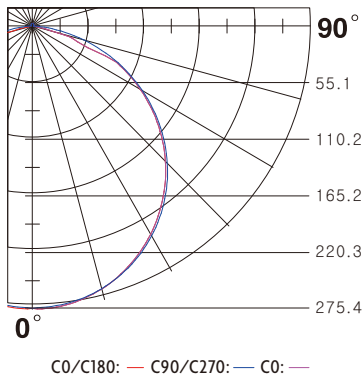
## Dimensions & Waterproof



## Product specification

Voltage	DC24 V
CRI/Ra	>90
Ambient temperature	-25°C~45°C

## Polar curve (The data base on 15W 6000K)

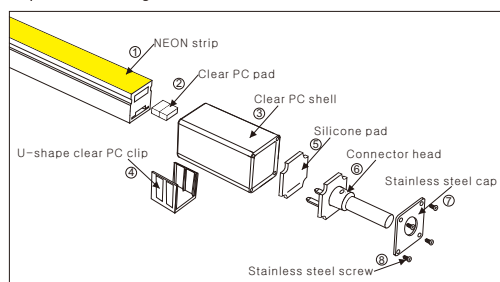


## White color parameters

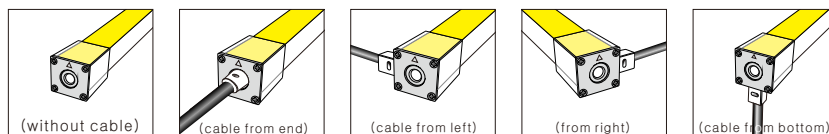
Part Number	CCT (K)	Low power(5w/m) (lm/m)	Medium power(10w/m) (lm/m)	High power(15w/m) (lm/m)
▶ NS-T1615-MC-W27	2600-2800K	254.62	509.25	763.87
▶ NS-T1615-MC-W30	2900-3100K	254.62	509.25	763.87
▶ NS-T1615-MC-W40	3750-4350K	266.75	533.50	800.25
▶ NS-T1615-MC-W60	5800-6500K	266.75	533.50	800.25

## Installation of solder-free connector with cable

Explosive drawing of Solder-free connector with cable



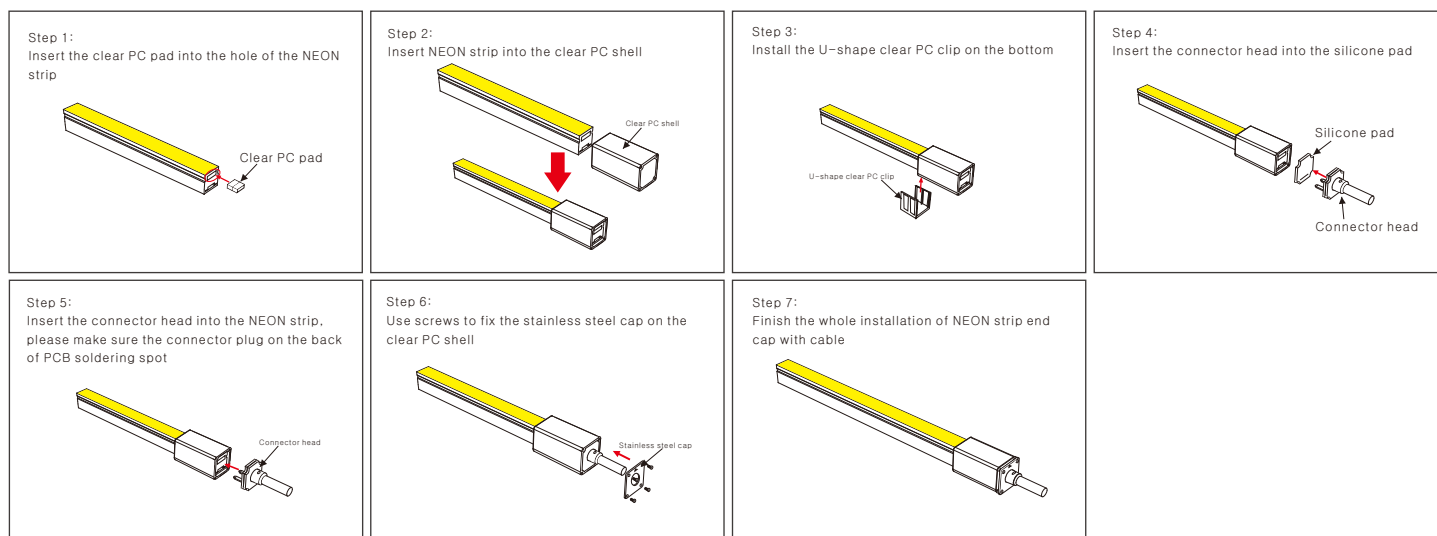
Cable outlet



**Note:**

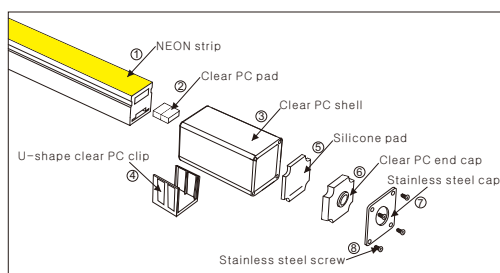
1. The same installation step suit for different outlet cable of the connector
2. Please keep the cutting place as flat as possible to achieve better waterproof effect.
3. This installation instruction is suitable of all the solder-free connector with similar structures.

Installation instruction of Solder-free connector with cable

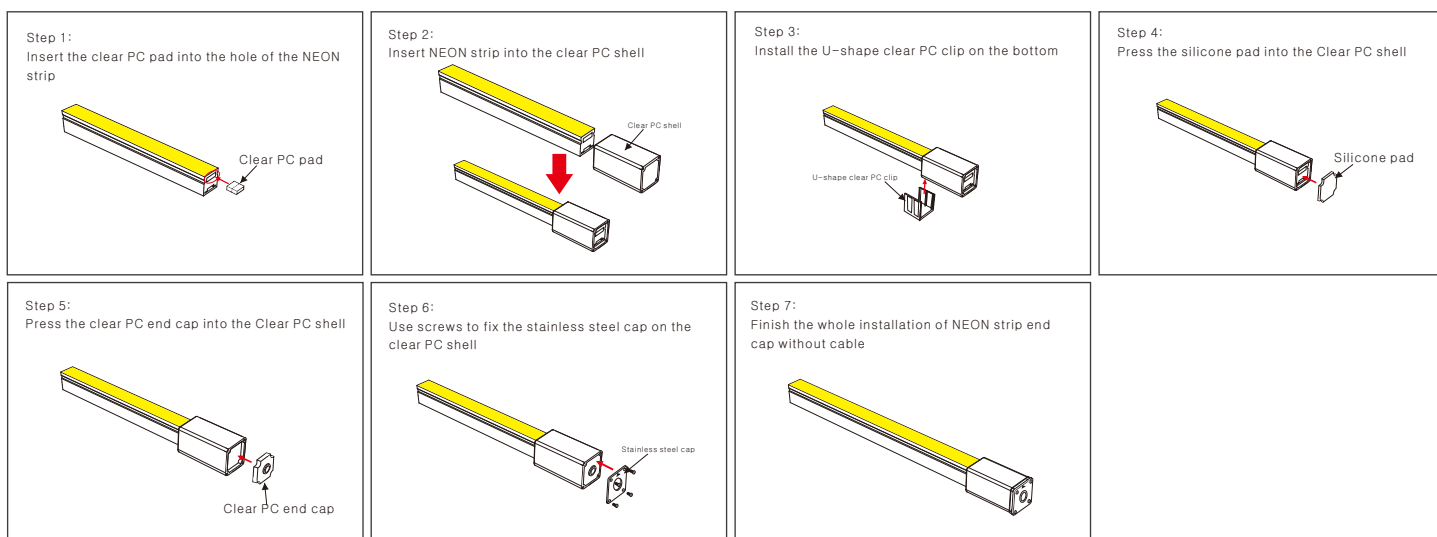


## Installation of solder-free connector without cable

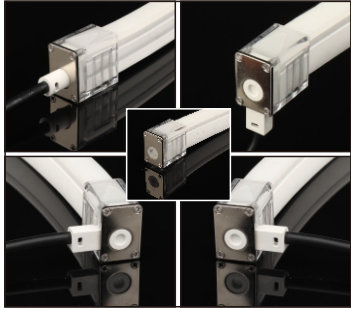
Explosive drawing of Solder-free connector without cable



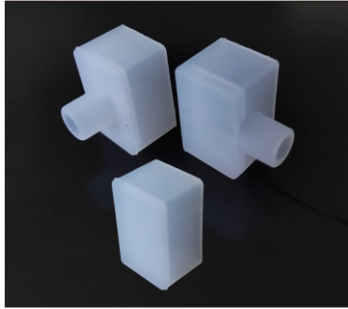
Installation instruction of Solder-free connector without cable



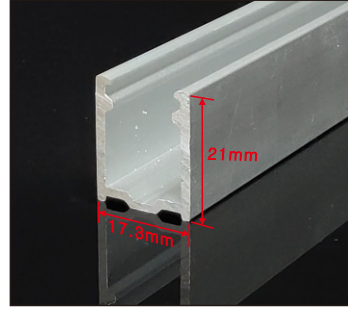
## Accessory



IP65 Solder-free endcap



IP67 Silicone end cap



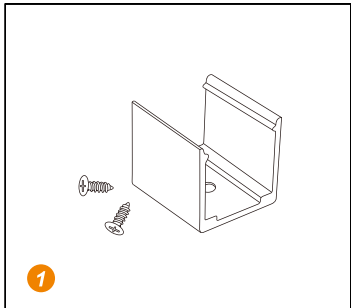
Mounting clip(length: 2cm)  
Mounting channel(length: 1m, 2m, 3m)



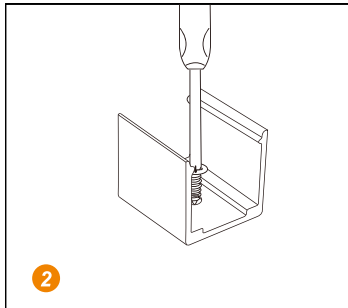
Scissors with angular scale

NOTE: IP65 version, solderless endcap fix by screw, more convenient; IP67 version, silicone endcap fix by silicone glue, more reliable.

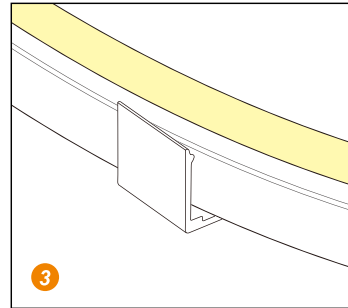
## Installation



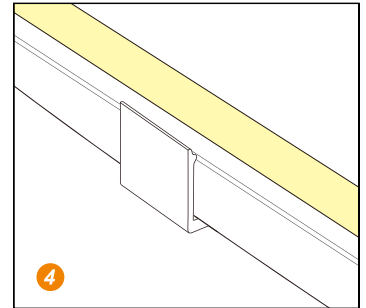
1 Prepare the screws and mounting clips



2 Adjust the fixed clips to the appropriate place, use a screwdriver to fix the screw.



3 Put the light emitting surface upwards, then insert the LED strip into the fixed clips.



4 Fix NEON strip completely into the fixed clip.