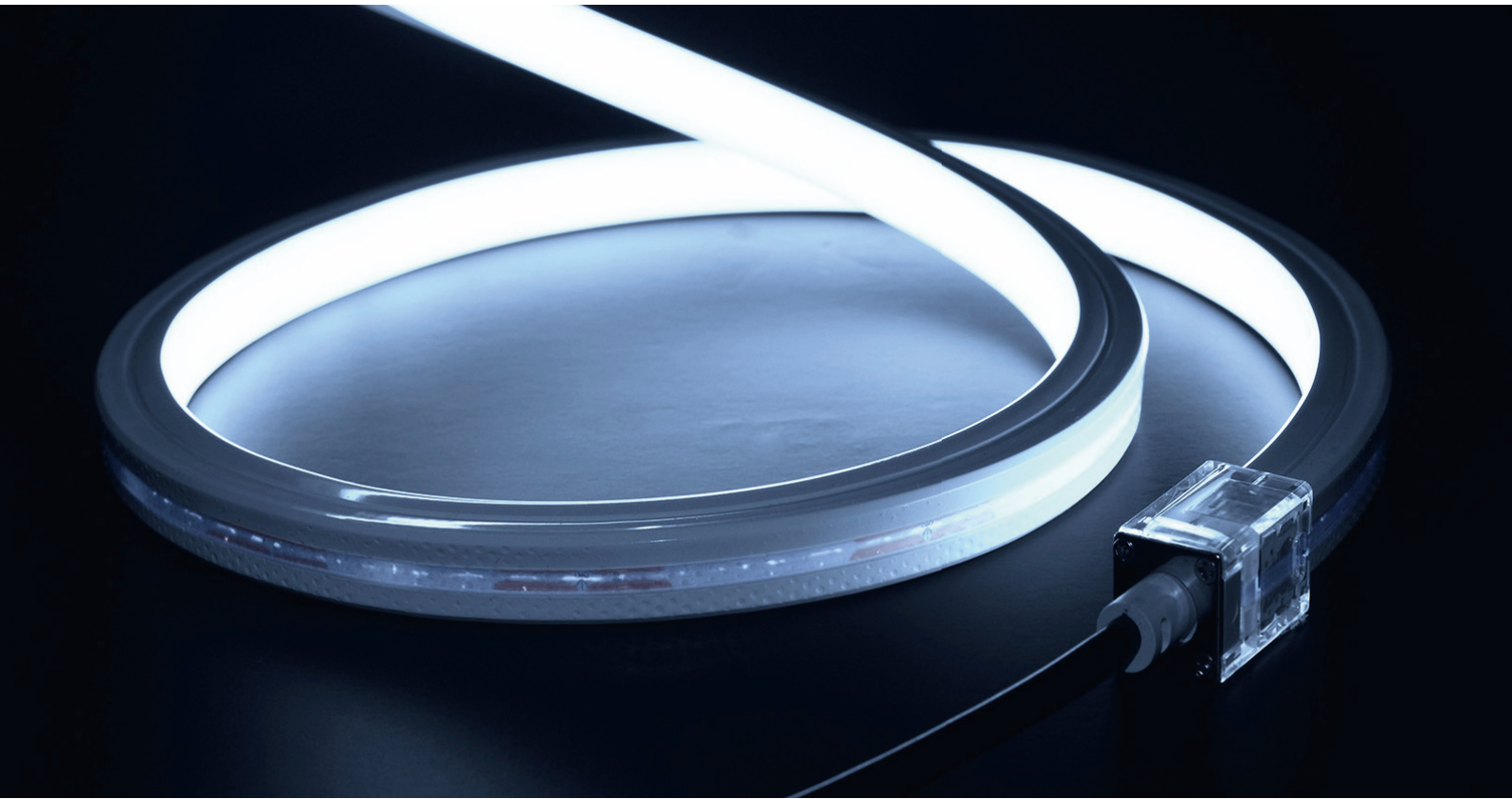




LED NEON FLEX SPECIFICATION

HIGH EFFICIENCY IP67 NEON 1212 24V TOP VIEW



Note: LEDYI may change product specifications and installation guidance without prior notice.

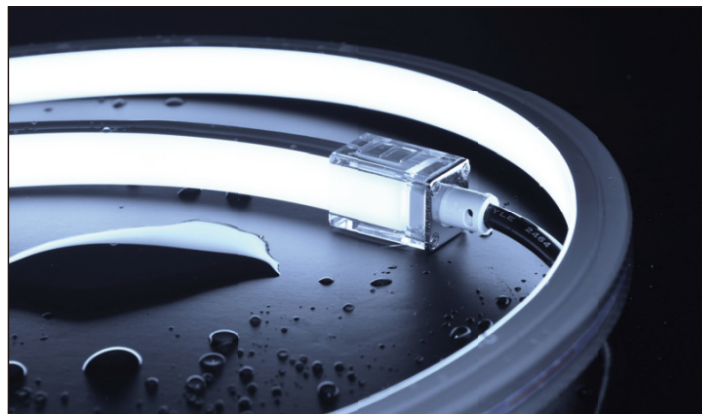
Regular power 5W/m and 10W/m for option

Max length 14 meters with one end power

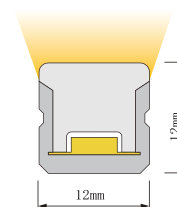
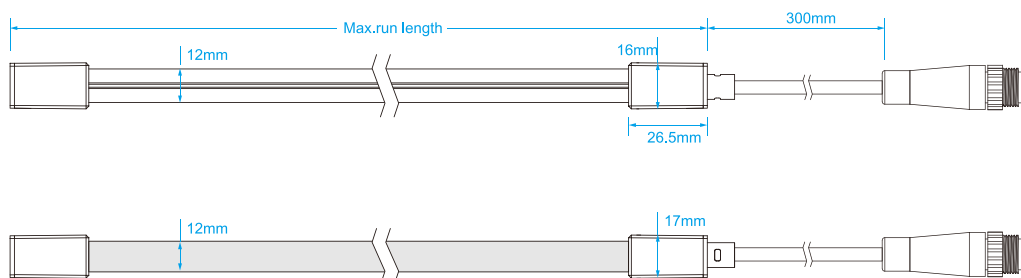
Soldering-free and silicone end cap

Eight CCT optional from 2700K to 6000K

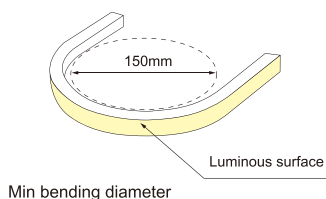
2700K
3000K
3500K
4000K
5000K
6000K



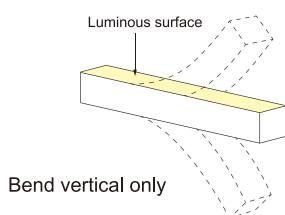
Dimensions & Waterproof



Across section size's picture



Min bending diameter



Bend vertical only

Electrical Parameter

Voltage	DC24V
LED PIN Temperature	Max. 65℃
Storage Temperature	-25℃ ~ 60℃
Ambient Temperature	Min. -25℃ Max (Table below)
CRI	>90

Specifi cation

Power	5 w/m	10 w/m
Efficacy@4000K	95 lm/w	93 lm/w
Max Ambient Temperature	55℃	45℃

Due to the tolerance of the production and electrical components,output value and electrical power can very up to 10%

White color parameters

Part Number	CCT (K)	Unit cut (mm)	CV/CC	Low power(5w/m)		High power(10w/m)	
				(lm/m)	(max length)	(lm/m)	(max length)
▶ NS-T1212H-W27	2600-2800K	50	CC/CV	420	14m	820	8m
▶ NS-T1212H-W30	2900-3100K	50	CC/CV	450	14m	880	8m
▶ NS-T1212H-W35	3300-3700K	50	CC/CV	480	14m	950	8m
▶ NS-T1212H-W40	3700-4300K	50	CC/CV	475	14m	930	8m
▶ NS-T1212H-W50	4700-5300K	50	CC/CV	475	14m	940	8m
▶ NS-T1212H-W60	5700-6300K	50	CC/CV	480	14m	950	8m

Note: CC stands for constant current, CV stands for constant voltage, max length of CV is 5m.

Cautions

The unused product and unused product after unpacking should be sealed with the packaging bag to avoid prolonged exposure.

Tests showed that nail and benzene substances will have yellowing effects on silicone gel; in the new indoor decoration environment, epoxy floor paint, wall paint, wallpaper adhesive, various decoration materials or new furniture, possibly release of nail and benzene substances, it is recommended to remove formaldehyde and benzene or ventilate for a period of time in the new indoor decoration environment, and then install the neon strip to avoid yellowing of the silicone gel.

Cable Entry

Injection plug

Front Cable Entry:

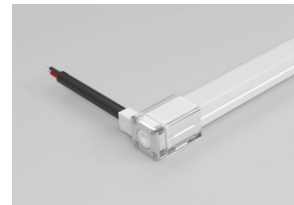
The cable could be hidden in all directions by the flexible design.



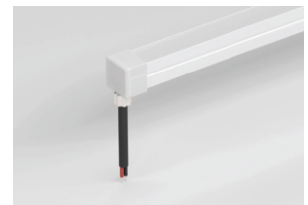
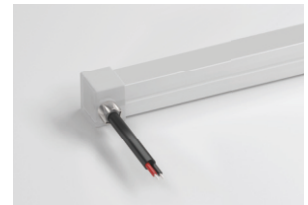
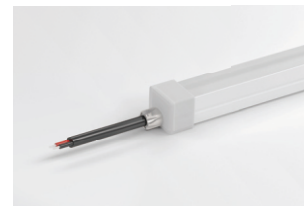
Side Cable Entry:

The cable could be perfectly hidden to achieve seamless light connection.

Solderless end cap



Silicone end cap

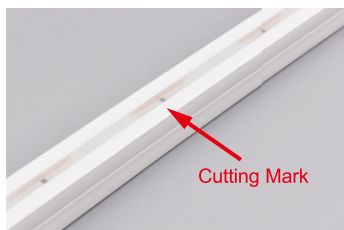


Bottom Cable Entry:

The cable could be perfectly hidden to achieve seamless light connection.



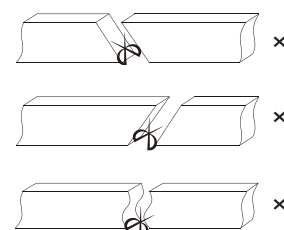
Cutting Mark



Remark: The bottom of the led strip has transparent window, the black marker is the cutting position



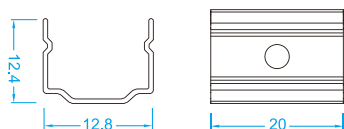
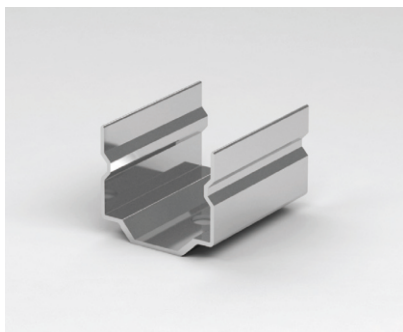
Use a cutting jig, vertical cutting precisely in the exact cutting position of led strip.



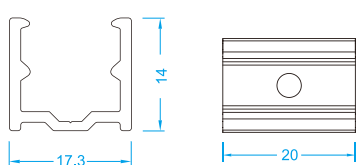
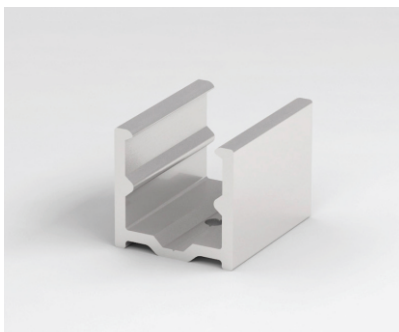
Please don't be feel free to cut and cut into an oblique angle or cambered section.

Mounting Way

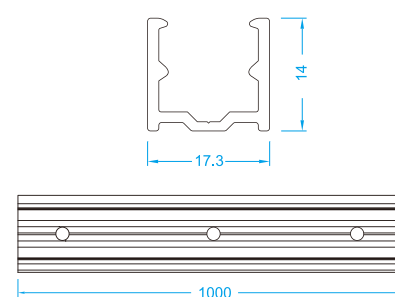
Stainless Steel Mounting clips



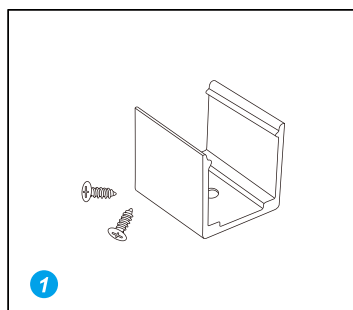
Aluminium Mounting clips



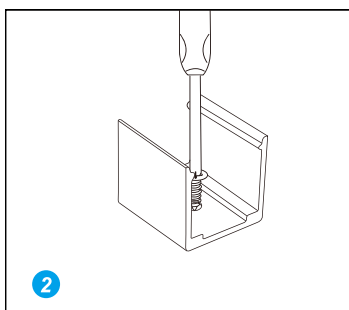
Aluminium Profile



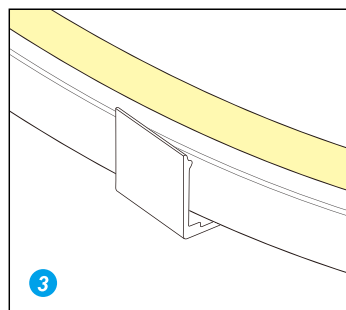
Installation



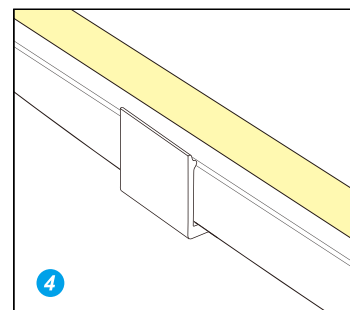
1 Prepare the screws and mounting clips



2 Adjust the fixed clips to the appropriate place, use a screwdriver to fix the screw.



3 Put the light emitting surface upwards, then insert the LED strip into the fixed clips.



4 Fix NEON strip completely into the fixed clip.