



LED NEON FLEX SPECIFICATION

HIGH EFFICIENCY IP67 NEON 1220 24V SIDE VIEW



Note: LEDYI may change product specifications and installation guidance without prior notice.

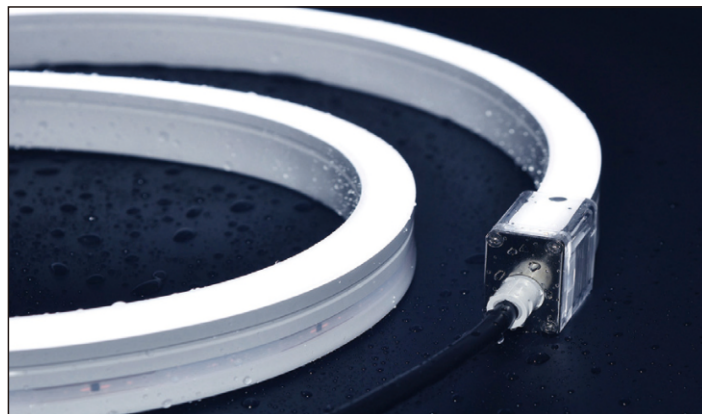
Regular power 5W/m, 10W/m and 15W/m for option

Max length 20 meters with one end power

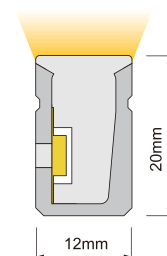
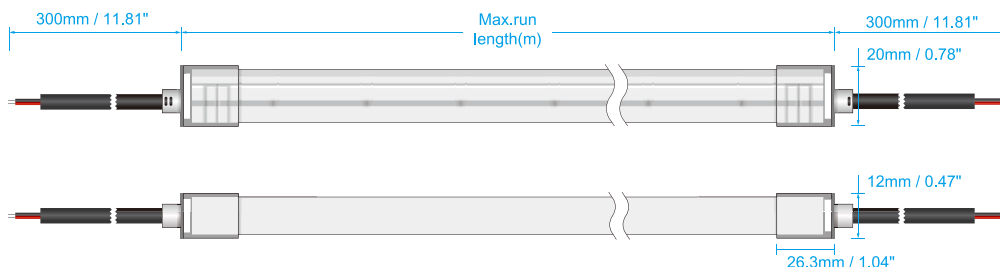
Soldering-free and silicone end cap

Eight CCT optional from 2700K to 6000K

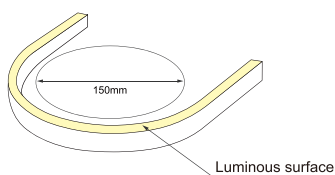
2700K
3000K
3500K
4000K
5000K
6000K



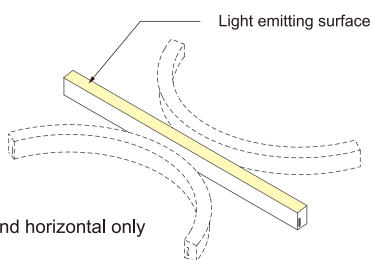
Dimensions & Waterproof



Across section



Min bending diameter



Bend horizontal only

Electrical Parameter

Voltage	DC24V
LED PIN Temperature	Max. 65°C
Storage Temperature	-25°C ~ 60°C
Ambient Temperature	Min. -25°C Max (Table below)
CRI	>90

Specification

Power	5 w/m	10 w/m	15 w/m
Efficacy@4000K	62 lm/w	61 lm/w	57 lm/w
Max Ambient Temperature	50°C	45°C	35°C

Due to the tolerance of the production and electrical components, output value and electrical power can vary up to 10%

White color parameters

Part Number	CCT (K)	Unit cut (mm)	CV/CC	Low power(5w/m) (lm/m) (max length)		Medium power(10w/m) (lm/m) (max length)		High power(15w/m) (lm/m) (max length)	
▶ NS-S1220H-W27	2600-2800K	50	CC/CV	275	20m	530	12m	750	8m
▶ NS-S1220H-W30	2900-3100K	50	CC/CV	275	20m	530	12m	750	8m
▶ NS-S1220H-W35	3300-3700K	50	CC/CV	300	20m	580	12m	795	8m
▶ NS-S1220H-W40	3700-4300K	50	CC/CV	310	20m	610	12m	855	8m
▶ NS-S1220H-W50	4700-5300K	50	CC/CV	300	20m	590	12m	825	8m
▶ NS-S1220H-W60	5700-6300K	50	CC/CV	300	20m	590	12m	825	8m

Note: CC stands for constant current, CV stands for constant voltage, max length of CV is 5m.

Cautions

The unused product and unused product after unpacking should be sealed with the packaging bag to avoid prolonged exposure.

Tests showed that nail and benzene substances will have yellowing effects on silicone gel; in the new indoor decoration environment, epoxy floor paint, wall paint, wallpaper adhesive, various decoration materials or new furniture, possibly release of nail and benzene substances, it is recommended to remove formaldehyde and benzene or ventilate for a period of time in the new indoor decoration environment, and then install the neon strip to avoid yellowing of the silicone gel.

Cable Entry

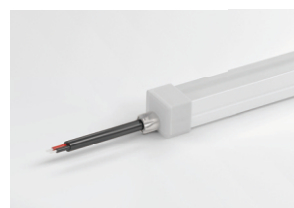
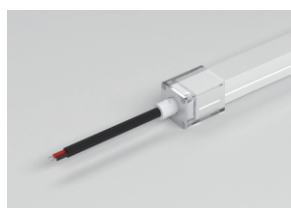
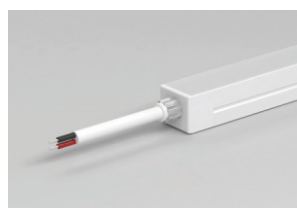
Injection plug

Solderless end cap

Silicone end cap

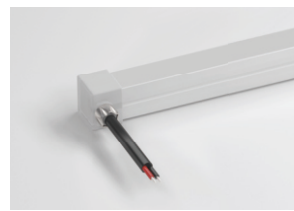
Front Cable Entry:

The cable could be hidden in all directions by the flexible design.



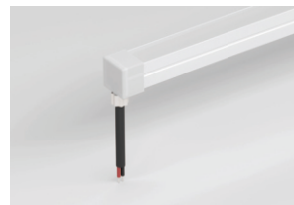
Side Cable Entry:

The cable could be perfectly hidden to achieve seamless light connection.

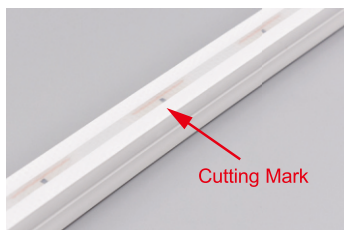


Bottom Cable Entry:

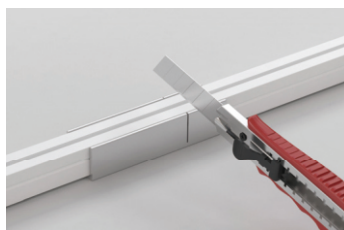
The cable could be perfectly hidden to achieve seamless light connection.



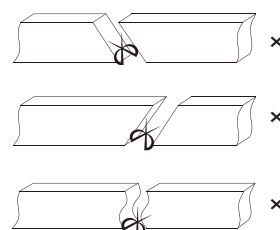
Cutting Mark



Remark: The bottom of the led strip has transparent window, the black marker is the cutting position



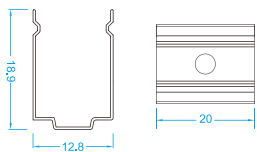
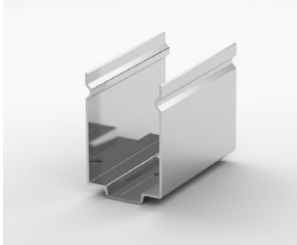
Use a cutting jig, vertical cutting precisely in the exact cutting position of led strip.



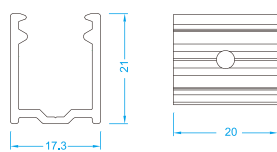
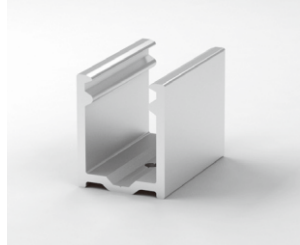
Please don't be feel free to cut and cut into an oblique angle or cambered section.

Mounting Way

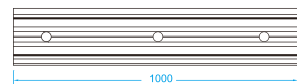
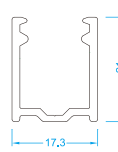
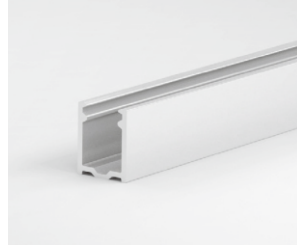
Stainless Steel Mounting clips



Aluminium Mounting clips



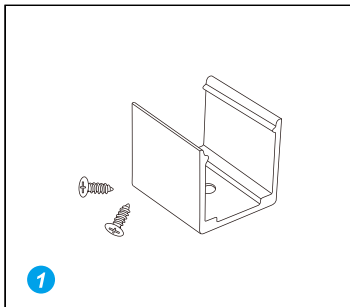
Aluminium Profile



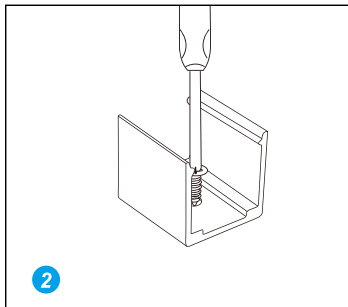
Suspension Installation



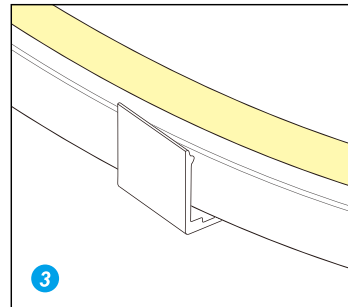
Installation



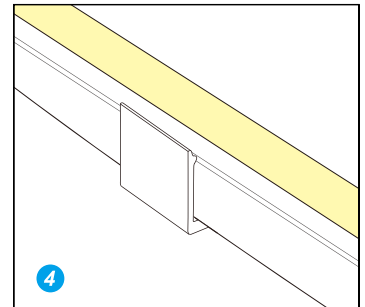
1 Prepare the screws and mounting clips



2 Adjust the fixed clips to the appropriate place, use a screwdriver to fix the screw.



3 Put the light emitting surface upwards, then insert the LED strip into the fixed clips.



4 Fix NEON strip completely into the fixed clip.