

## Wall Mounted Rotary Panel RF Remote

Model No.: T1-KB, T2-KB, T3-KB

1-3 color/Glass panel/Rotary dimming/Wireless remote 30m distance/CR2032 battery



T1-KB



T2-KB



T3-KB

CE RoHS  LVD

### Features

- Rotary glass panel RF remote, apply to single color, dual color or RGB LED controller.
- Rotate knob to change RGB color, color temperature or brightness, support long press or twice click operation.
- Each remote can match one or more receiver.
- CR2032 battery powered.
- White & Black glass panel available.

### Technical Parameters

Input and Output	
Output signal	RF(2.4GHz)
Working voltage	3VDC(CR2032)
Working current	< 5mA
Standby current	< 10μA
Standby time	1 year
Remote distance	30m(Barrier-free space)

Warranty	
Warranty	5 years

Safety and EMC	
EMC standard (EMC)	ETSI EN 301 489-1 V2.2.3 ETSI EN 301 489-17 V3.2.4
Safety standard(LVD)	EN 62368-1:2020+A11:2020
Radio Equipment(REDE)	ETSI EN 300 328 V2.2.2
Certification	CE,EMC,LVD,RED

Environment	
Operation temperature	Ta: -30°C ~ +55°C
IP rating	IP20

### Knob function

#### T1-KB Single color dimmer



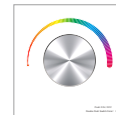
- **Push:** Turn on or off light.  
After turn on light:
- **Rotate:** Rotate knob to adjust brightness (2.5 turns, 50 levels).
- **Long push(1-6s):** Continuous 256 levels brightness adjustment.

#### T2-KB Dual color temperature



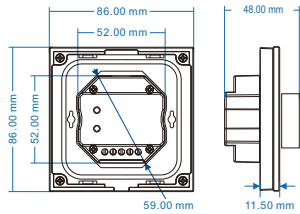
- **Push:** Turn on or off light.  
After turn on light:
- **Rotate:** Rotate knob to change color temperature or brightness (2.5 turns, 50 levels).
- **Push twice:** Switch between color temperature or brightness adjustment.
- **Long push(1-6s):** Continuous 256 levels brightness adjustment.

#### T3-KB RGB

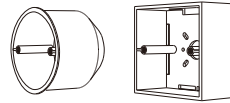


- **Push:** Turn on or off light.  
After turn on light:
- **Rotate:** Rotate knob to change RGB color (3 turns, 60 colors) or brightness (2.5 turns, 50 levels).
- **Push twice:** Switch between RGB color or brightness adjustment.
- **Long push(1-6s):** Continuous 256 levels brightness adjustment.

## Mechanical Structures and Installations



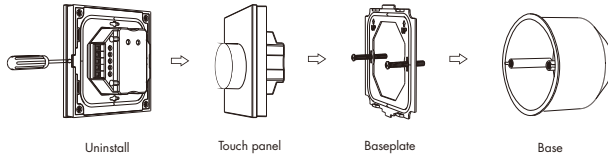
Typical base as below:



European style

86 size

Installation diagram:



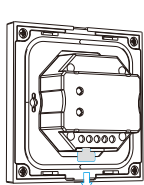
Uninstall

Touch panel

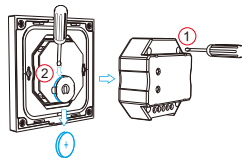
Baseplate

Base

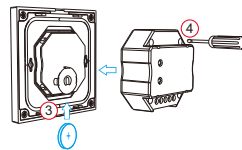
Replace battery:



Note: Before the first use, please remove the protective film on the battery.



Remove old CR2032 Battery



Insert new CR2032 Battery

## Match Remote Control (two match ways)

End user can choose the suitable match/delete ways. Two options are offered for selection:

### Use the controller's Match key

Match:

Short press match key, immediately push the knob. The LED indicator fast flash a few times means match is successful.

Delete:

Press and hold match key for 5s to delete all match, The LED indicator fast flash a few times means all matched remotes were deleted.

### Use Power Restart

Match:

Switch off the power, then switch on power, repeat again. Immediately push the knob 3 times. The light blinks 3 times means match is successful.

Delete:

Switch off the power, then switch on power, repeat again. Immediately push the knob 5 times. The light blinks 5 times means all matched remotes were deleted.

## Safety information

1. Read all instructions carefully before you begin this installation.
2. When installing battery, pay attention to the battery positive and negative polarity.
  - A long time without the remote control, remove the battery.
  - When remote distance becomes smaller and insensitive, replace the battery.
3. If no response from the receiver, please re-match the remote.
4. Gently handle remote, beware of falling.
5. For indoor and dry location use only.