



## LED FLEXIBLE STRIPS

12V 1080 Chips/m RGB Flexible COB Strip



Note: LEDYI may change product specifications and installation guidance without prior notice.

12V 1080 Chips/m RGB Flexible COB Strip



Part Number: LY1080-COBRGB-W12-IP20 → IP20/IP65

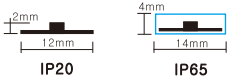
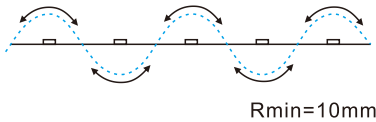
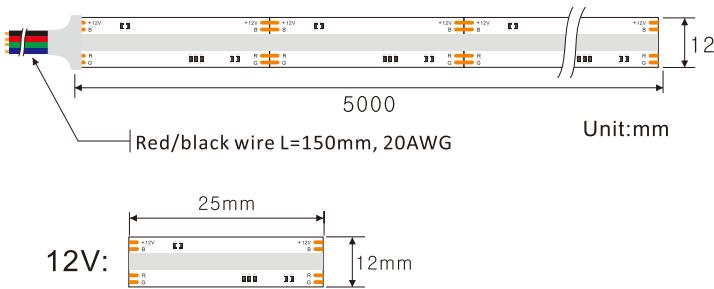


Description

12V, RGB flexible COB strip (Step length: 12V=25mm), with 3M adhesive tape on the back for easy installed. RGB color, 180° beam angle.



Dimensions & Waterproof



Product Specification

Dimension	5000x12x2mm
Chip Type	COB
Chips/m	1080pcs
Step LEDs	27pcs
Step Length	25mm

Voltage(V)	DC12V
Power(W/m)	9W
CRI	/
Beam Angle	180°
Operation Temperature	-20°C~50°C

Product Photometrics (Data base on IP20 CRI>90)

Color	Peak Wavelength (nm)	Dominant Wavelength (nm)	Lumen (lm/m)	Power (w/m)	Efficacy (lm/w)
Red	632	622	83.96	2.90	28.97
Green	517	523	269.84	3.14	85.99
Blue	462	466	50.33	2.96	16.98

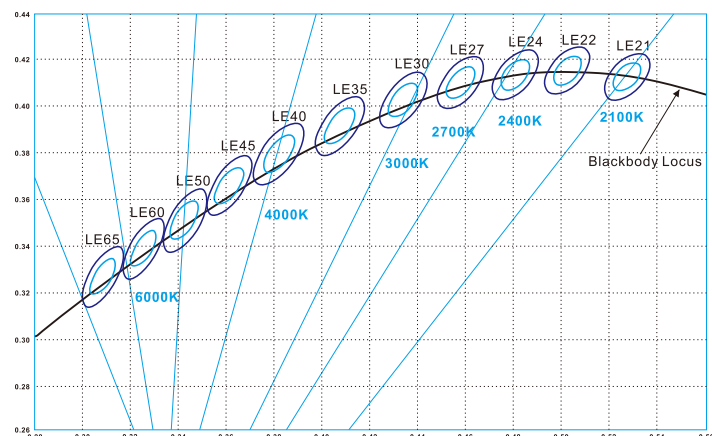
# 12V 1080 Chips/m RGB Flexible COB Strip



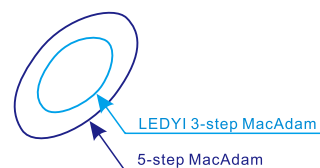
## Product Photometrics - All Red, Green and Blue color at 100% on (Data base on IP20)

CCT (K)	Lumen (lm/m)	Power (w/m)	Efficacy (lm/w)	CRI	R9
42300K	387.45	9	43.05	50	-

## Bining



Graphic Description:



For all your order

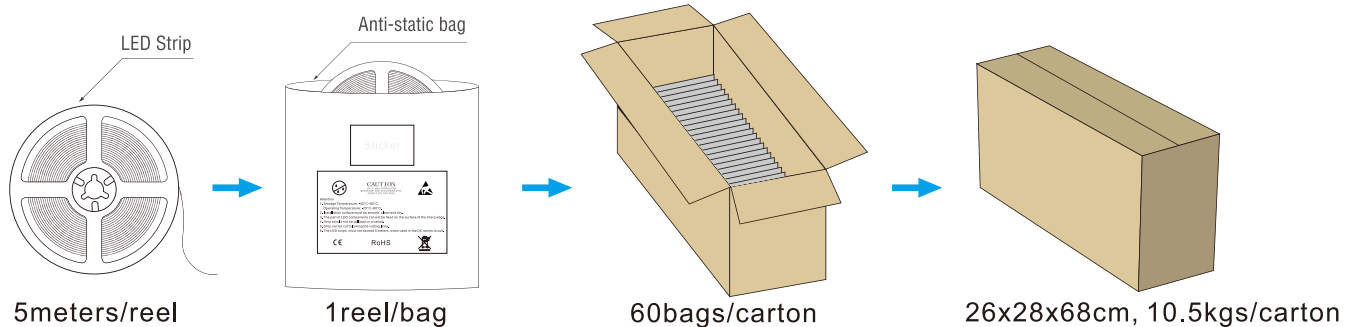


Today and tomorrow

IP20: bare, max. light output and the best color consistency, indoor use.

IP65: Silicon tube / Heat shrink tube / Extrusion tube / U milky tube + clear cover, ~3% less output and 2nd best color consistency, Indoor use or semi-outdoor use, for raining environments.

## Packing Information (Data base on IP20)



## Precautions for use

1. To protect the LED light strip, do not hit the light-emitting area with hard things.
2. After unpacking, please use in 24H to avoid the oxidation effect of solder joints.
3. Avoid direct contact with high temperature objects in the light-emitting area of the lamp, and the instantaneous contact temperature of the surface of the light-emitting area should be less than 210 °C.
4. The soldering iron temperature should be less than 300° during soldering, and the soldering time of single solder should be controlled within 3s.
5. It is strictly forbidden to twist the lamp with short distance. The single lamp strip (0.5 m) has a maximum twist angle of 720°.



6. The bend diameter at any position needs to be greater than 1cm.

