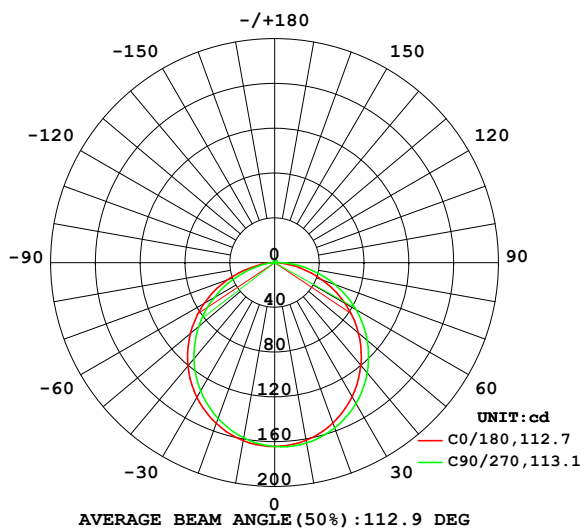


LUMINAIRE PHOTOMETRIC TEST REPORT

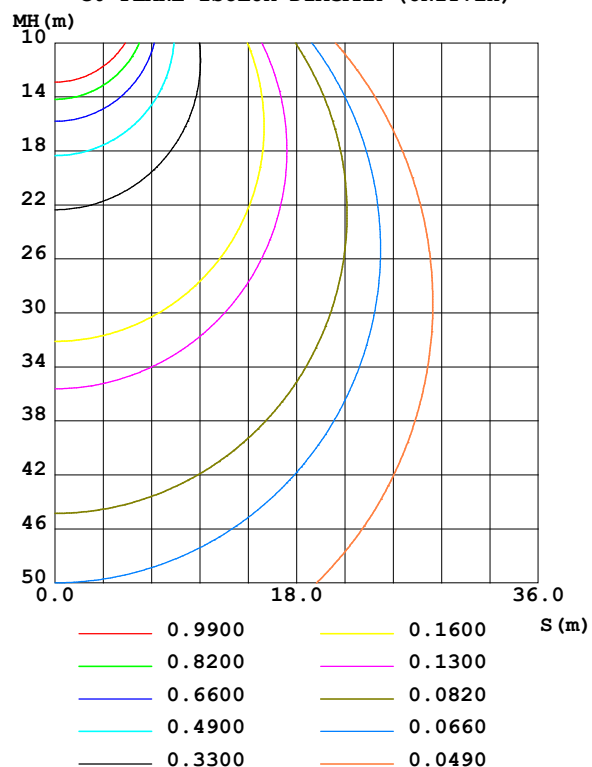
Test:U:23.998V I:0.4215A P:10.115W PF:1.0000 Freq:0Hz Lamp Flux:4.00673x120 lm		
NAME: NS-T1615-W27-10	TYPE:	WEIGHT:
SPEC.:	DIM.: 1000*16*15MM	SERIAL No.:
MFR.:	SUR.: 0.016*1	Shielding Angle:

DATA OF LAMP		PHOTOMETRIC DATA Eff: 47.53 lm/W			
MODEL		I _{max} (cd)	164.8	S/MH(C0/180)	1.26
NOMINAL POWER(W)	10	LOR(%)	100.0	S/MH(C90/270)	1.21
RATED VOLTAGE(V)	24	TOTAL FLUX(lm)	480.81	□ UP,DN(C0-180)	1.0,52.7
NOMINAL FLUX(lm)	4.00673	CIE CLASS	DIRECT	□ UP,DN(C180-360)	0.8,45.5
LAMPS INSIDE	120	□ up (%)	1.8	CIBSE SHR NOM	1.25
TEST VOLTAGE(V)	24	□ down (%)	98.2	CIBSE SHR MAX	1.35

LUMINOUS INTENSITY DISTRIBUTION DIAGRAM



C0 PLANE ISOLUX DIAGRAM (UNIT:lx)



C Range: 0 - 360DEG
C Interval: 22.5DEG
Test Speed: HIGH
Temperature:25.3DEG
Operators:YSL
Test Date:2021-07-07

□ Range: 0 - 180DEG
□ Interval: 2.0DEG
Test System:EVERFINE GO-2000B_V1 SYSTEM V2.00.450
Humidity:65.0%
Test Distance:5.749m [K=1.0000]
Remarks:

ZONAL FLUX DIAGRAM

ZONAL FLUX DIAGRAM:

°	C0	C45	C90	C135	C180	C225	C270	C315	°	□ zone	□ total	%lum, lamp
10	161.2	162.6	163.6	163.3	161.4	160.1	159.0	159.4	0- 10	15.54	15.54	3.23,3.23
20	152.4	155.2	157.2	156.5	152.8	150.3	148.1	148.9	10- 20	44.50	60.04	12.5,12.5
30	138.4	142.4	145.4	144.3	139.0	135.3	132.3	133.4	20- 30	67.45	127.5	26.5,26.5
40	119.9	125.0	128.7	127.2	120.5	115.9	112.2	113.6	30- 40	81.38	208.9	43.4,43.4
50	97.70	103.7	108.0	106.1	98.11	92.83	88.68	90.29	40- 50	84.59	293.5	61,61
60	72.62	79.16	83.99	81.68	72.62	66.78	62.34	64.14	50- 60	76.72	370.2	77,77
70	45.22	52.22	57.29	54.65	44.75	38.73	34.37	36.26	60- 70	58.69	428.9	89.2,89.2
80	18.02	24.45	29.38	26.54	16.82	12.27	9.504	10.67	70- 80	33.37	462.2	96.1,96.1
90	1.331	3.941	6.633	4.581	0.4677	0.9113	0.8365	1.286	80- 90	9.742	472.0	98.2,98.2
100	0.4046	1.477	1.271	1.112	0.3767	0.8263	0.8490	1.219	90-100	1.517	473.5	98.5,98.5
110	0.7290	1.503	1.177	1.126	0.6349	1.007	1.058	1.296	100-110	1.111	474.6	98.7,98.7
120	1.042	1.593	1.315	1.167	0.9285	1.126	1.277	1.377	110-120	1.169	475.8	99,99
130	1.349	1.700	1.476	1.365	1.199	1.299	1.458	1.484	120-130	1.198	477.0	99.2,99.2
140	1.586	1.814	1.662	1.525	1.438	1.470	1.591	1.625	130-140	1.163	478.1	99.4,99.4
150	1.788	1.914	1.835	1.696	1.667	1.639	1.688	1.778	140-150	1.045	479.2	99.7,99.7
160	1.977	2.020	1.987	1.906	1.899	1.838	1.871	1.928	150-160	0.8472	480.0	99.8,99.8
170	2.169	2.168	2.099	2.119	2.129	2.054	2.057	2.112	160-170	0.5688	480.6	100,100
180	2.321	2.284	2.268	2.305	2.325	2.287	2.268	2.307	170-180	0.2084	480.8	100,100
DEG	LUMINOUS INTENSITY:cd									UNIT:lm		

Conical surface Flux(90deg): 259.96 lm

%lum = 54.1%

%lamp = 54.1%

Conical surface Flux(120deg): 370.18 lm

%lum = 77.0%

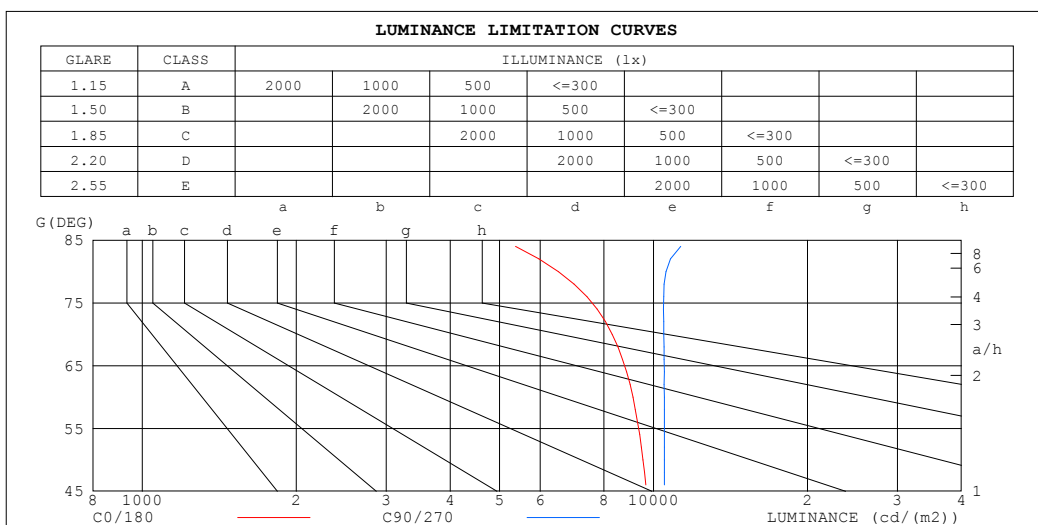
%lamp = 77.0%

C Range: 0 - 360DEG
C Interval: 22.5DEG
Test Speed: HIGH
Temperature:25.3DEG
Operators:YSL
Test Date:2021-07-07

□ Range: 0 - 180DEG
□ Interval: 2.0DEG
Test System:EVERFINE GO-2000B_V1 SYSTEM V2.00.450
Humidity:65.0%
Test Distance:5.749m [K=1.0000]
Remarks:

LUMINANCE LIMITATION CURVES

Test:U:23.998V I:0.4215A P:10.115W PF:1.0000 Freq:0Hz Lamp Flux:4.00673x120 lm		
NAME: NS-T1615-W27-10	TYPE:	WEIGHT:
SPEC.:	DIM.: 1000*16*15MM	SERIAL No.:
MFR.:	SUR.: 0.016*1	Shielding Angle:



LUMINANCE cd/(m2)		
G (DEG)	C0/180	C90/270
85	6440	13563
80	6515	10579
75	8265	11142
70	8298	10472
65	9190	10891
60	9116	10502
55	9627	10762
50	9540	10502
45	9890	10682

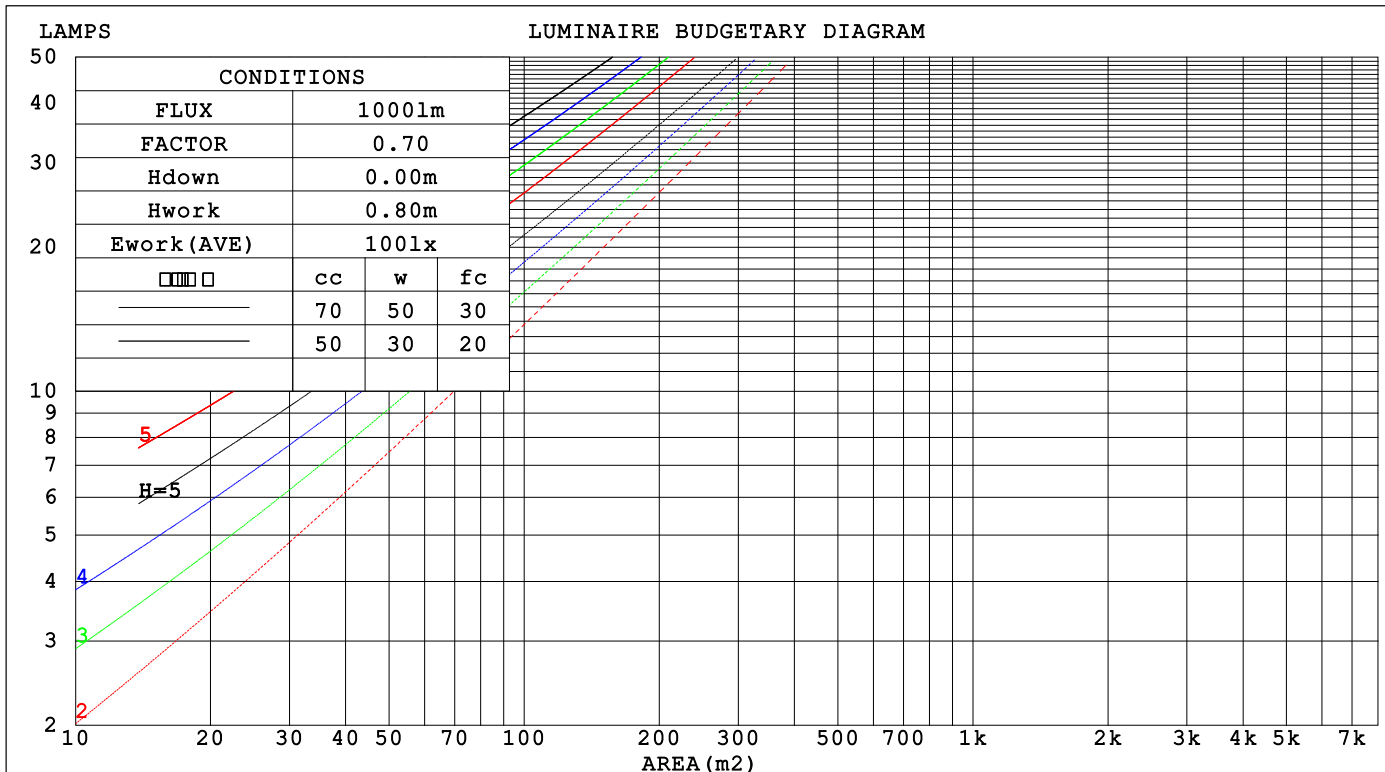
C Range: 0 - 360DEG
C Interval: 22.5DEG
Test Speed: HIGH
Temperature:25.3DEG
Operators:YSL
Test Date:2021-07-07

☐ Range: 0 - 180DEG
☐ Interval: 2.0DEG
Test System:EVERFINE GO-2000B_V1 SYSTEM V2.00.450
Humidity:65.0%
Test Distance:5.749m [K=1.0000]
Remarks:

CU AND LUMINAIRE BUDGETARY ESTIMATE DIAGRAM

Test:U:23.998V I:0.4215A P:10.115W PF:1.0000 Freq:0Hz Lamp Flux:4.00673x120 lm		
NAME: NS-T1615-W27-10	TYPE:	WEIGHT:
SPEC.:	DIM.: 1000*16*15MM	SERIAL No.:
MFR.:	SUR.: 0.016*1	Shielding Angle:

□cc	80%			70%			50%			30%			10%			0												
□w	50%	30%	10%	50%	30%	10%	50%	30%	10%	50%	30%	10%	50%	30%	10%	0												
□fc	20%			20%			20%			20%			20%			0												
RCR	RCR:Room Cavity Ratio																Coefficients of Utilization(CU)											
0.0	1.19	1.19	1.19	1.16	1.16	1.16	1.10	1.10	1.10	1.05	1.05	1.05	1.00	1.00	1.00	.98												
1.0	1.03	.99	.95	1.01	.97	.93	.96	.93	.90	.92	.89	.87	.88	.86	.84	.82												
2.0	.90	.83	.77	.88	.82	.76	.84	.79	.74	.80	.76	.72	.77	.74	.70	.68												
3.0	.79	.71	.64	.77	.70	.63	.74	.67	.62	.71	.65	.61	.68	.63	.59	.57												
4.0	.70	.61	.54	.68	.60	.54	.66	.58	.53	.63	.57	.52	.61	.55	.51	.49												
5.0	.62	.53	.47	.61	.53	.46	.59	.51	.46	.57	.50	.45	.54	.49	.44	.42												
6.0	.56	.47	.41	.55	.46	.40	.53	.45	.40	.51	.44	.39	.49	.43	.39	.37												
7.0	.51	.42	.36	.50	.42	.36	.48	.41	.35	.47	.40	.35	.45	.39	.34	.32												
8.0	.46	.38	.32	.46	.37	.32	.44	.37	.31	.43	.36	.31	.41	.35	.31	.29												
9.0	.42	.34	.29	.42	.34	.29	.41	.33	.28	.39	.33	.28	.38	.32	.28	.26												
10.0	.39	.31	.26	.39	.31	.26	.37	.30	.26	.36	.30	.25	.35	.29	.25	.23												



C Range: 0 - 360DEG
C Interval: 22.5DEG
Test Speed: HIGH
Temperature:25.3DEG
Operators:YSL
Test Date:2021-07-07

□ Range: 0 - 180DEG
□ Interval: 2.0DEG
Test System:EVERFINE GO-2000B_V1 SYSTEM V2.00.450
Humidity:65.0%
Test Distance:5.749m [K=1.0000]
Remarks:

WEC AND CCEC

Test:U:23.998V I:0.4215A P:10.115W PF:1.0000 Freq:0Hz Lamp Flux:4.00673x120 lm		
NAME: NS-T1615-W27-10	TYPE:	WEIGHT:
SPEC.:	DIM.: 1000*16*15MM	SERIAL No.:
MFR.:	SUR.: 0.016*1	Shielding Angle:

<input type="checkbox"/> cc	80%	70%	50%	30%	10%	0
<input type="checkbox"/> w	50% 30% 10%	50% 30% 10%	50% 30% 10%	50% 30% 10%	50% 30% 10%	0
<input type="checkbox"/> fc	20%	20%	20%	20%	20%	0
RCR	RCR:Room Cavity Ratio					Wall Exitance Coefficients(WEC)
0.0						
1.0	.311 .177 .056	.304 .173 .055	.289 .166 .053	.276 .159 .051	.264 .153 .049	
2.0	.292 .160 .049	.286 .157 .048	.273 .152 .047	.261 .147 .046	.250 .142 .045	
3.0	.270 .144 .043	.264 .142 .043	.253 .137 .042	.243 .133 .041	.233 .129 .040	
4.0	.249 .130 .038	.244 .128 .038	.234 .124 .037	.225 .121 .036	.216 .117 .036	
5.0	.230 .117 .034	.226 .116 .034	.217 .113 .033	.208 .110 .033	.201 .107 .032	
6.0	.214 .107 .031	.209 .106 .030	.201 .103 .030	.194 .101 .030	.187 .098 .029	
7.0	.199 .098 .028	.195 .097 .028	.188 .095 .027	.181 .093 .027	.175 .091 .027	
8.0	.186 .091 .025	.182 .090 .025	.176 .088 .025	.170 .086 .025	.164 .084 .025	
9.0	.174 .084 .023	.171 .083 .023	.165 .082 .023	.160 .080 .023	.154 .078 .023	
10.0	.163 .078 .022	.161 .078 .022	.155 .076 .021	.150 .075 .021	.146 .073 .021	

<input type="checkbox"/> cc	80%	70%	50%	30%	10%	0
<input type="checkbox"/> w	50% 30% 10%	50% 30% 10%	50% 30% 10%	50% 30% 10%	50% 30% 10%	0
<input type="checkbox"/> fc	20%	20%	20%	20%	20%	0
RCR	RCR:Room Cavity Ratio					Ceiling Cavity Exitance Coefficients(CCEC)
0.0	.204 .204 .204	.175 .175 .175	.119 .119 .119	.069 .069 .069	.022 .022 .022	
1.0	.195 .170 .148	.166 .146 .128	.114 .101 .088	.066 .058 .051	.021 .019 .017	
2.0	.187 .146 .112	.160 .126 .097	.109 .087 .068	.063 .051 .040	.020 .016 .013	
3.0	.179 .129 .089	.153 .111 .077	.105 .077 .054	.061 .045 .032	.020 .015 .010	
4.0	.171 .115 .073	.147 .100 .063	.101 .069 .044	.058 .041 .026	.019 .013 .009	
5.0	.164 .105 .062	.141 .091 .054	.097 .063 .038	.056 .037 .022	.018 .012 .007	
6.0	.157 .097 .054	.135 .084 .047	.093 .059 .033	.054 .034 .020	.017 .011 .006	
7.0	.150 .090 .048	.129 .078 .042	.089 .055 .029	.052 .032 .018	.017 .011 .006	
8.0	.143 .084 .043	.123 .073 .038	.085 .051 .027	.050 .030 .016	.016 .010 .005	
9.0	.137 .079 .040	.118 .069 .035	.082 .048 .025	.048 .028 .015	.015 .009 .005	
10.0	.132 .075 .037	.113 .065 .032	.079 .046 .023	.046 .027 .014	.015 .009 .005	

C Range: 0 - 360DEG
C Interval: 22.5DEG
Test Speed: HIGH
Temperature:25.3DEG
Operators:YSL
Test Date:2021-07-07

☐ Range: 0 - 180DEG
☐ Interval: 2.0DEG
Test System:EVERFINE GO-2000B_V1 SYSTEM V2.00.450
Humidity:65.0%
Test Distance:5.749m [K=1.0000]
Remarks:

UGR(Unified Glare Rating) Table

Test:U:23.998V I:0.4215A P:10.115W PF:1.0000 Freq:0Hz Lamp Flux:4.00673x120 lm										
NAME: NS-T1615-W27-10					TYPE:			WEIGHT:		
SPEC.:					DIM.: 1000*16*15MM			SERIAL No.:		
MFR.:					SUR.: 0.016*1			Shielding Angle:		
ceiling/cavity	0.7	0.7	0.5	0.5	0.3	0.7	0.7	0.5	0.5	0.3
walls	0.5	0.3	0.5	0.3	0.3	0.5	0.3	0.5	0.3	0.3
working plane	0.2	0.2	0.2	0.2	0.2	0.2	0.2	0.2	0.2	0.2
Room dimensions	Viewed crosswise					Viewed endwise				
x = 2H y = 2H	23.3	24.8	23.6	25.1	25.3	23.8	25.3	24.1	25.6	25.8
3H	24.9	26.2	25.2	26.5	26.8	25.6	27.0	26.0	27.3	27.6
4H	25.4	26.8	25.8	27.0	27.3	26.4	27.7	26.8	28.0	28.3
6H	25.8	27.1	26.2	27.4	27.7	27.1	28.3	27.4	28.6	28.9
8H	25.9	27.1	26.3	27.5	27.8	27.3	28.5	27.7	28.9	29.2
12H	26.0	27.1	26.4	27.5	27.8	27.6	28.7	27.9	29.0	29.4
4H 2H	24.1	25.4	24.4	25.7	25.9	24.5	25.8	24.8	26.1	26.3
3H	25.8	26.9	26.2	27.3	27.6	26.4	27.6	26.8	27.9	28.3
4H	26.5	27.6	26.9	27.9	28.3	27.4	28.4	27.8	28.8	29.1
6H	27.0	28.0	27.4	28.3	28.7	28.2	29.1	28.6	29.5	29.9
8H	27.2	28.0	27.6	28.4	28.9	28.5	29.4	28.9	29.8	30.2
12H	27.3	28.1	27.7	28.5	28.9	28.8	29.6	29.3	30.0	30.5
8H 4H	26.9	27.7	27.3	28.1	28.6	27.6	28.5	28.1	28.9	29.3
6H	27.6	28.3	28.0	28.7	29.2	28.6	29.3	29.1	29.8	30.2
8H	27.8	28.4	28.3	28.9	29.4	29.1	29.7	29.6	30.2	30.7
12H	28.0	28.5	28.5	29.0	29.5	29.5	30.0	30.0	30.5	31.0
12H 4H	26.9	27.7	27.4	28.1	28.6	27.6	28.4	28.1	28.9	29.3
6H	27.7	28.3	28.2	28.8	29.3	28.7	29.3	29.2	29.8	30.3
8H	28.0	28.5	28.5	29.0	29.5	29.2	29.7	29.7	30.2	30.7
Variations with the observer position at spacings(CIE Pub.117):										
S = 1.0H	+ 0.1 / - 0.2					+ 0.1 / - 0.2				
1.5H	+ 0.2 / - 0.3					+ 0.2 / - 0.3				
2.0H	+ 0.2 / - 0.4					+ 0.1 / - 0.3				

CIE Pub.117, 480.8 lm Total Lamp Luminous Flux Correct (8log(F/F0) = -2.5)
Area: 0.016 m2

C Range: 0 - 360DEG
C Interval: 22.5DEG
Test Speed: HIGH
Temperature:25.3DEG
Operators:YSL
Test Date:2021-07-07

☐ Range: 0 - 180DEG
☐ Interval: 2.0DEG
Test System:EVERFINE GO-2000B_V1 SYSTEM V2.00.450
Humidity:65.0%
Test Distance:5.749m [K=1.0000]
Remarks:

UTILIZATION FACTORS TABLE

Test:U:23.998V I:0.4215A P:10.115W PF:1.0000 Freq:0Hz Lamp Flux:4.00673x120 lm		
NAME: NS-T1615-W27-10	TYPE:	WEIGHT:
SPEC.:	DIM.: 1000*16*15MM	SERIAL No.:
MFR.:	SUR.: 0.016*1	Shielding Angle:

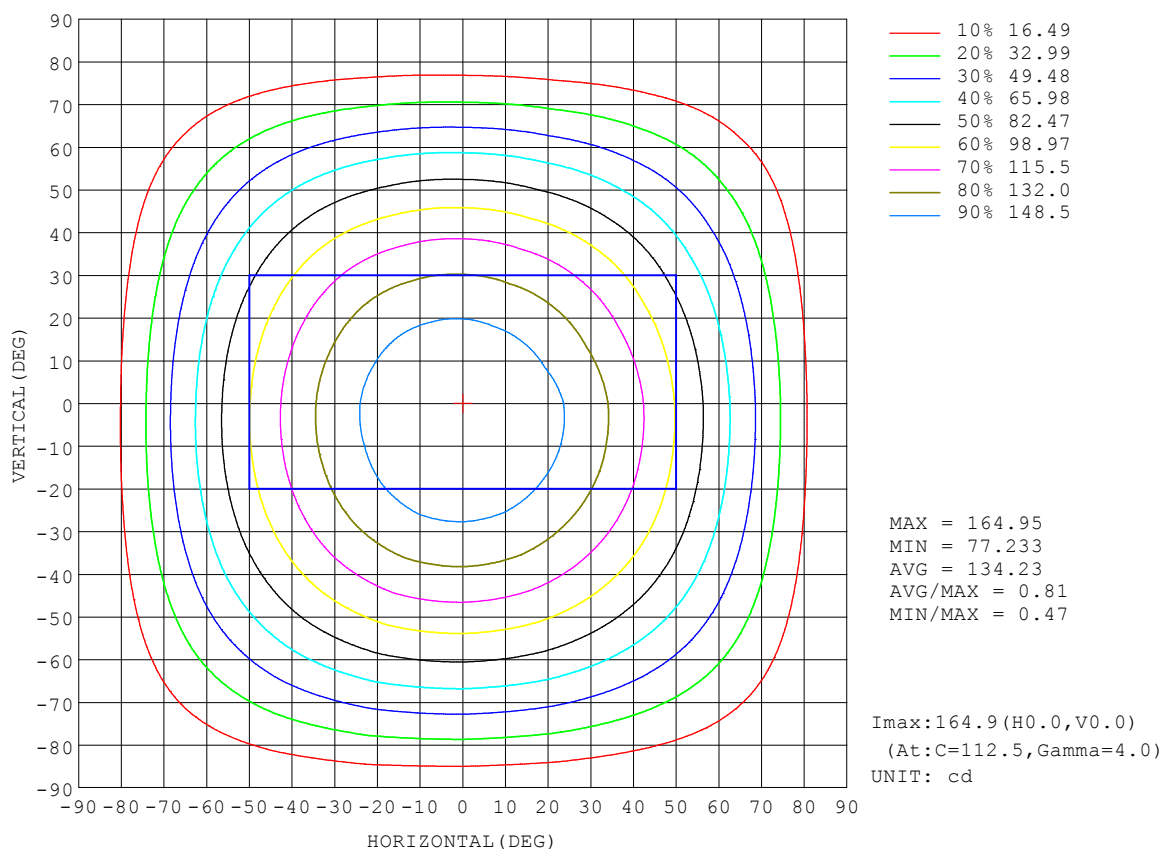
REFLECTANCE										
Ceiling	0.8	0.8	0.8	0.7	0.7	0.7	0.5	0.5	0.5	0
Walls	0.7	0.5	0.3	0.7	0.5	0.3	0.7	0.5	0.3	0
Working plane	0.2	0.2	0.2	0.2	0.2	0.2	0.2	0.2	0.2	0
ROOM INDEX	UTILIZATION FACTORS (PERCENT) $k(RI) \times RCR = 5$									
$k = 0.60$	57	45	38	56	45	38	55	44	38	31
0.80	67	55	48	66	55	47	64	54	47	40
1.00	75	64	57	74	63	56	71	65	56	48
1.25	82	72	64	81	71	64	78	69	63	56
1.50	87	77	70	86	76	70	82	74	68	61
2.00	94	86	79	92	84	78	88	82	76	68
2.50	98	90	84	96	89	83	92	86	81	72
3.00	102	95	89	99	93	88	95	90	85	76
4.00	106	100	95	103	98	94	98	94	91	81
5.00	108	103	99	105	101	97	101	97	94	84
ROOM INDEX	UF (total)									Direct
According to DIN EN 13032-2 2004			Suspended					SHRNOM = 1.25		

C Range: 0 - 360DEG
C Interval: 22.5DEG
Test Speed: HIGH
Temperature:25.3DEG
Operators:YSL
Test Date:2021-07-07

☐ Range: 0 - 180DEG
☐ Interval: 2.0DEG
Test System:EVERFINE GO-2000B_V1 SYSTEM V2.00.450
Humidity:65.0%
Test Distance:5.749m [K=1.0000]
Remarks:

ISOCANDELA DIAGRAM

Test:U:23.998V I:0.4215A P:10.115W PF:1.0000 Freq:0Hz Lamp Flux:4.00673x120 lm		
NAME: NS-T1615-W27-10	TYPE:	WEIGHT:
SPEC.:	DIM.: 1000*16*15MM	SERIAL No.:
MFR.:	SUR.: 0.016*1	Shielding Angle:

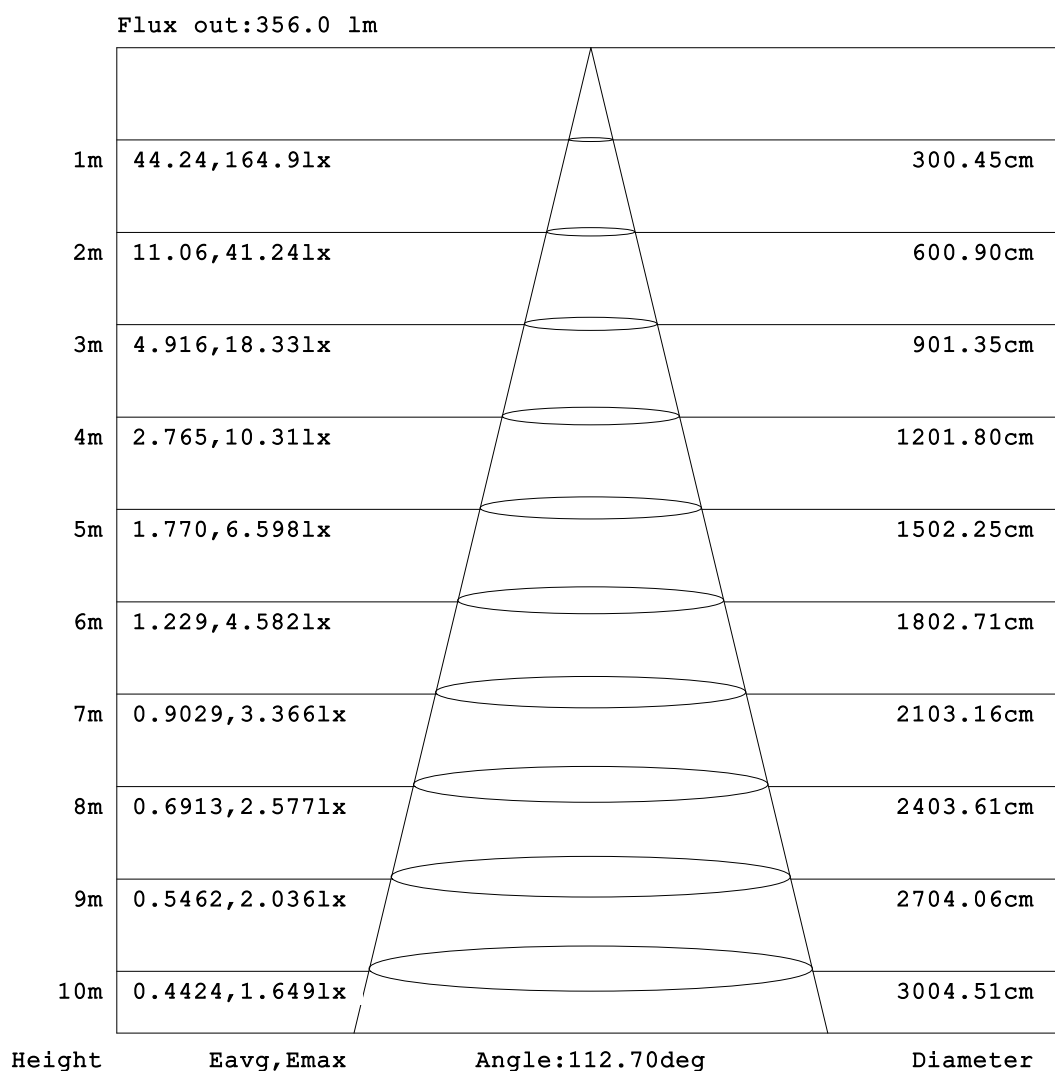


C Range: 0 - 360DEG
C Interval: 22.5DEG
Test Speed: HIGH
Temperature:25.3DEG
Operators:YSL
Test Date:2021-07-07

☐ Range: 0 - 180DEG
☐ Interval: 2.0DEG
Test System:EVERFINE GO-2000B_V1 SYSTEM V2.00.450
Humidity:65.0%
Test Distance:5.749m [K=1.0000]
Remarks:

AAI Figure

Test:U:23.998V I:0.4215A P:10.115W PF:1.0000 Freq:0Hz Lamp Flux:4.00673x120 lm		
NAME: NS-T1615-W27-10	TYPE:	WEIGHT:
SPEC.:	DIM.: 1000*16*15MM	SERIAL No.:
MFR.:	SUR.: 0.016*1	Shielding Angle:



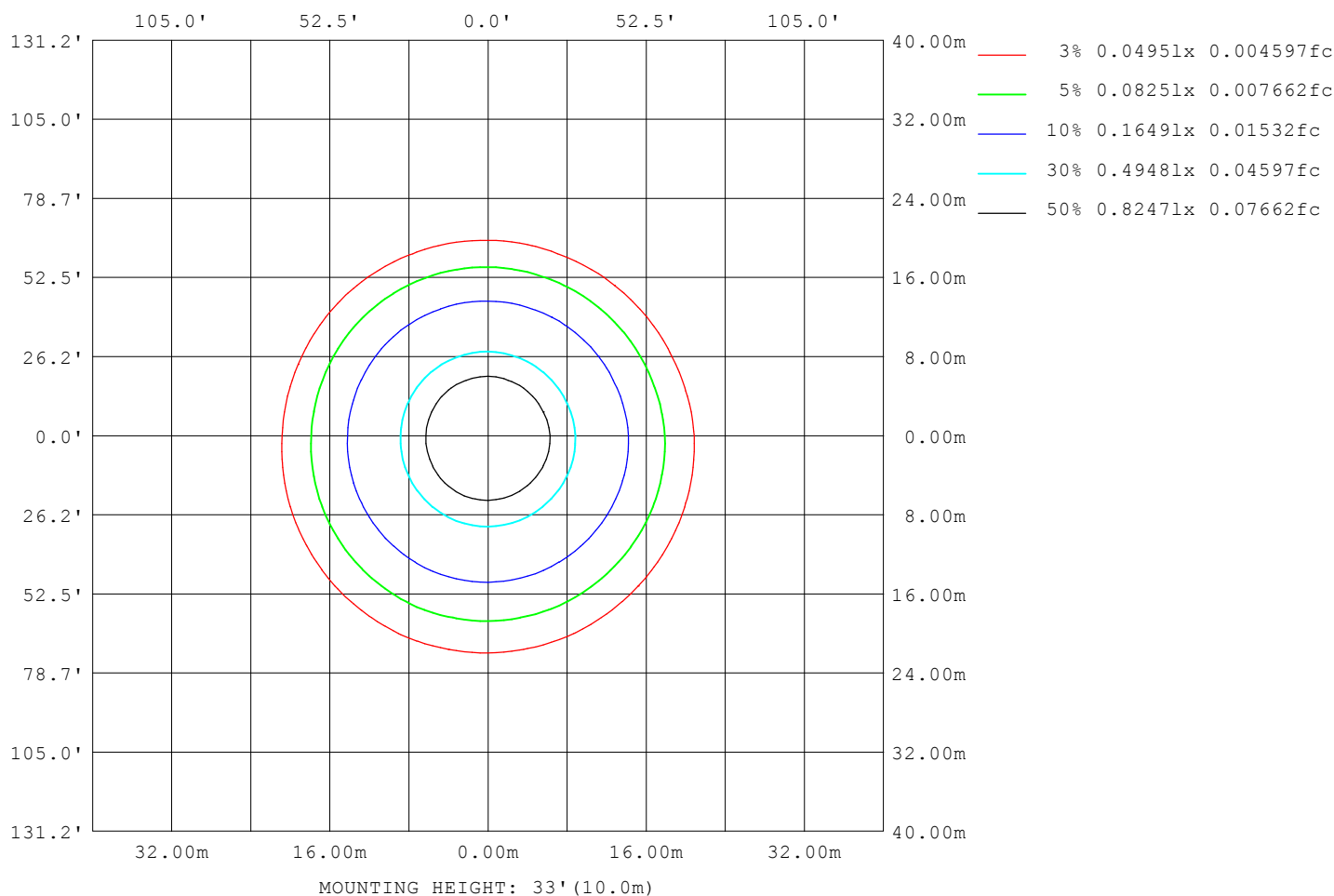
Note:The Curves indicate the illuminated area and the average illumination when the luminaire is at different distance.

C Range: 0 - 360DEG
C Interval: 22.5DEG
Test Speed: HIGH
Temperature:25.3DEG
Operators:YSL
Test Date:2021-07-07

☐ Range: 0 - 180DEG
☐ Interval: 2.0DEG
Test System:EVERFINE GO-2000B_V1 SYSTEM V2.00.450
Humidity:65.0%
Test Distance:5.749m [K=1.0000]
Remarks:

ISOLUX DIAGRAM

Test:U:23.998V I:0.4215A P:10.115W PF:1.0000 Freq:0Hz Lamp Flux:4.00673x120 lm		
NAME: NS-T1615-W27-10	TYPE:	WEIGHT:
SPEC.:	DIM.: 1000*16*15MM	SERIAL No.:
MFR.:	SUR.: 0.016*1	Shielding Angle:



C Range: 0 - 360DEG
C Interval: 22.5DEG
Test Speed: HIGH
Temperature:25.3DEG
Operators:YSL
Test Date:2021-07-07

☐ Range: 0 - 180DEG
☐ Interval: 2.0DEG
Test System:EVERFINE GO-2000B_V1 SYSTEM V2.00.450
Humidity:65.0%
Test Distance:5.749m [K=1.0000]
Remarks:

LED Avg.L Report

Test:U:23.998V I:0.4215A P:10.115W PF:1.0000 Freq:0Hz Lamp Flux:4.00673x120 lm		
NAME: NS-T1615-W27-10	TYPE:	WEIGHT:
SPEC.:	DIM.: 1000*16*15MM	SERIAL No.:
MFR.:	SUR.: 0.016*1	Shielding Angle:

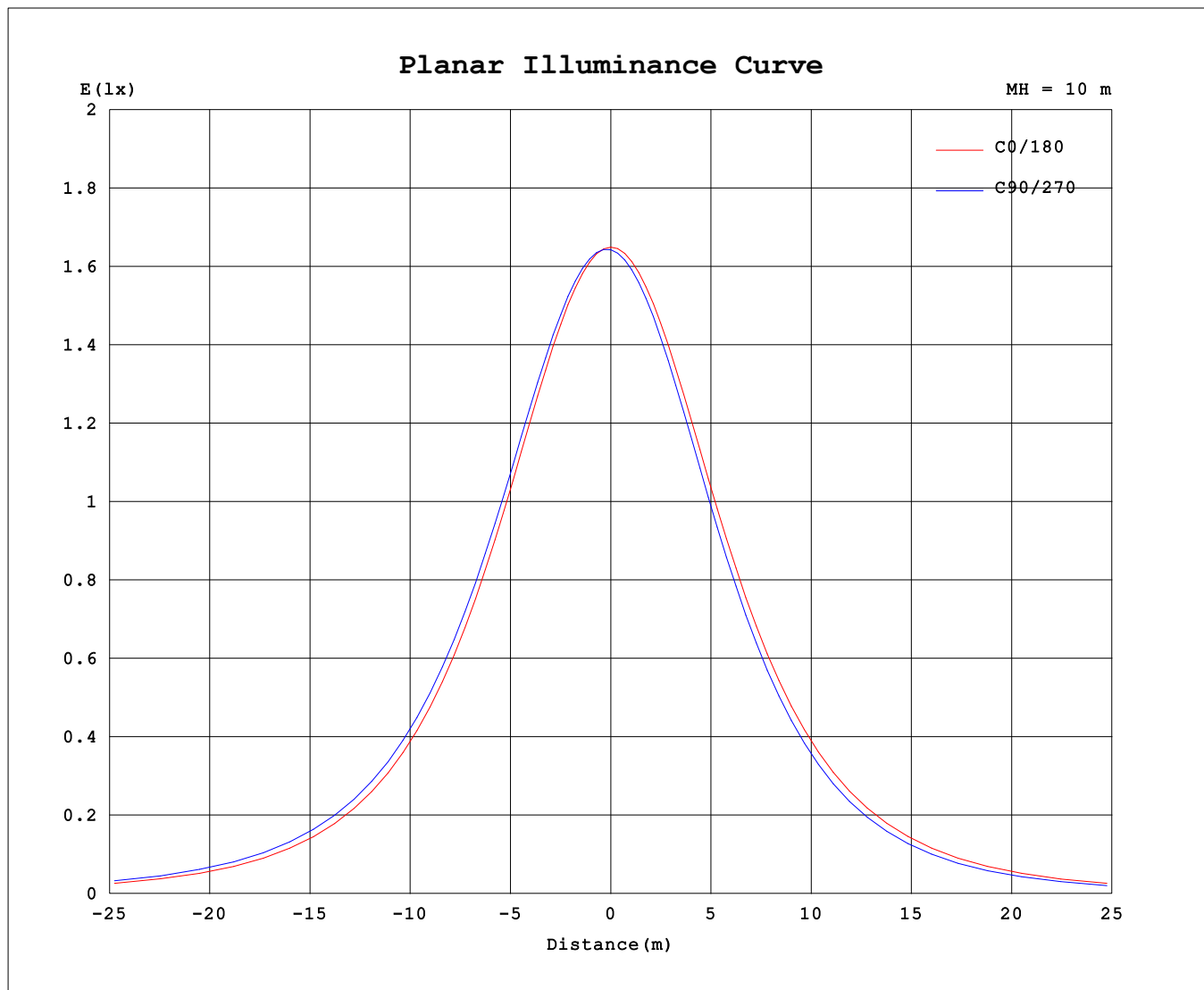
AvgL	cd/m2
L_0~180 (65) av	8728
L_0~180 (75) av	7459
L_0~180 (85) av	4560
L_90~270 (65) av	8826
L_90~270 (75) av	7755
L_90~270 (85) av	6860
L_45 (65) av	8788
L_45 (75) av	7615
L_45 (85) av	5846

Standard: GB/T 29293-2012

C Range: 0 - 360DEG
C Interval: 22.5DEG
Test Speed: HIGH
Temperature:25.3DEG
Operators:YSL
Test Date:2021-07-07

☐ Range: 0 - 180DEG
☐ Interval: 2.0DEG
Test System:EVERFINE GO-2000B_V1 SYSTEM V2.00.450
Humidity:65.0%
Test Distance:5.749m [K=1.0000]
Remarks:

Planar Illuminance Curve



C Range: 0 - 360DEG
C Interval: 22.5DEG
Test Speed: HIGH
Temperature: 25.3DEG
Operators: YSL
Test Date: 2021-07-07

☐ Range: 0 - 180DEG
☐ Interval: 2.0DEG
Test System: EVERFINE GO-2000B_V1 SYSTEM V2.00.450
Humidity: 65.0%
Test Distance: 5.749m [K=1.0000]
Remarks:

LUMINOUS DISTRIBUTION INTENSITY DATA

Test:U:23.998V I:0.4215A P:10.115W PF:1.0000 Freq:0Hz Lamp Flux:4.00673x120 lm		
NAME: NS-T1615-W27-10	TYPE:	WEIGHT:
SPEC.:	DIM.: 1000*16*15MM	SERIAL No.:
MFR.:	SUR.: 0.016*1	Shielding Angle:

Table--1

UNIT: cd

C (DEG) □ (DEG)	0	22.5	45	67.5	90	112.5	135	157.5	180	202.5	225	247.5	270	292.5	315	337.5			
0	164	164	164	164	164	164	164	164	164	164	164	164	164	164	164	164			
5	164	164	164	165	165	165	165	164	164	164	163	163	163	163	163	163			
10	161	162	163	163	164	164	163	163	161	161	160	159	159	159	159	160			
15	158	159	160	161	162	162	161	160	159	158	157	156	155	155	156	157			
20	152	154	155	157	157	157	157	155	153	151	150	149	148	148	149	150			
25	147	149	151	152	153	153	152	150	148	146	145	143	142	142	143	145			
30	138	141	142	145	145	146	144	142	139	137	135	133	132	132	133	135			
35	131	134	136	138	139	140	138	135	132	130	128	126	125	124	126	128			
40	120	123	125	128	129	129	127	124	120	118	116	113	112	112	114	116			
45	111	114	117	120	121	121	119	116	112	109	107	105	103	103	105	107			
50	97.7	101	104	107	108	108	106	103	98.1	95.1	92.8	90.1	88.7	88.3	90.3	93.2			
55	88.0	91.4	94.2	97.3	98.7	99.1	96.7	93.1	88.3	85.1	82.7	79.9	78.4	78.1	80.1	83.3			
60	72.6	76.2	79.2	82.5	84.0	84.2	81.7	77.8	72.6	69.3	66.8	63.9	62.3	62.0	64.1	67.5			
65	61.9	65.5	68.7	72.0	73.6	73.8	71.2	67.1	61.7	58.3	55.7	52.8	51.2	50.9	53.1	56.6			
70	45.2	48.9	52.2	55.6	57.3	57.4	54.7	50.3	44.7	41.3	38.7	35.9	34.4	34.0	36.3	39.7			
75	34.1	37.7	41.0	44.4	46.1	46.2	43.4	39.0	33.3	29.9	27.5	24.9	23.5	23.2	25.3	28.6			
80	18.0	21.2	24.5	27.7	29.4	29.4	26.5	22.2	16.8	14.0	12.3	10.4	9.50	9.26	10.7	13.1			
85	8.94	11.5	14.4	17.4	18.9	18.8	16.1	12.1	7.55	5.66	4.80	3.97	3.53	3.46	4.10	5.41			
90	1.33	2.45	3.94	5.73	6.63	6.47	4.58	2.12	0.47	0.85	0.91	0.89	0.84	1.02	1.29	1.49			
95	0.26	1.56	1.82	2.33	2.61	2.50	1.68	0.95	0.25	0.72	0.81	0.81	0.77	0.95	1.20	1.36			
100	0.40	1.48	1.48	1.41	1.27	1.28	1.11	0.84	0.38	0.74	0.83	0.87	0.85	1.01	1.22	1.24			
105	0.53	1.48	1.46	1.34	1.17	1.20	1.02	0.89	0.46	0.80	0.86	0.95	0.93	1.07	1.25	1.16			
110	0.73	1.49	1.50	1.36	1.18	1.21	1.13	0.95	0.63	0.86	1.01	1.06	1.06	1.18	1.30	1.08			
115	0.86	1.50	1.54	1.39	1.23	1.25	1.18	1.03	0.75	0.90	1.09	1.14	1.15	1.25	1.32	1.07			
120	1.04	1.52	1.59	1.47	1.31	1.32	1.17	1.16	0.93	1.00	1.13	1.25	1.28	1.35	1.38	1.14			
125	1.17	1.56	1.64	1.51	1.38	1.38	1.24	1.25	1.04	1.04	1.20	1.33	1.35	1.42	1.42	1.16			
130	1.35	1.64	1.70	1.59	1.48	1.42	1.36	1.38	1.20	1.21	1.30	1.36	1.46	1.51	1.48	1.33			
135	1.45	1.68	1.74	1.65	1.55	1.44	1.44	1.46	1.30	1.30	1.37	1.40	1.51	1.56	1.54	1.41			
140	1.59	1.77	1.81	1.73	1.66	1.55	1.52	1.49	1.44	1.42	1.47	1.50	1.59	1.64	1.63	1.53			
145	1.67	1.82	1.85	1.79	1.73	1.63	1.58	1.56	1.53	1.50	1.53	1.57	1.63	1.69	1.68	1.61			
150	1.79	1.90	1.91	1.87	1.84	1.74	1.70	1.71	1.67	1.62	1.64	1.67	1.69	1.77	1.78	1.72			
155	1.87	1.95	1.96	1.91	1.91	1.80	1.74	1.81	1.76	1.70	1.71	1.74	1.76	1.82	1.84	1.80			
160	1.98	2.04	2.02	1.98	1.99	1.88	1.91	1.94	1.90	1.84	1.84	1.84	1.87	1.90	1.93	1.93			
165	2.06	2.10	2.08	2.04	2.05	1.94	1.99	2.02	1.99	1.94	1.91	1.92	1.95	1.96	2.00	2.02			
170	2.17	2.19	2.17	2.14	2.10	2.08	2.12	2.14	2.13	2.08	2.05	2.04	2.06	2.06	2.11	2.15			
175	2.25	2.26	2.24	2.21	2.18	2.20	2.21	2.23	2.22	2.18	2.15	2.14	2.14	2.14	2.19	2.23			
180	2.32	2.30	2.28	2.27	2.27	2.27	2.30	2.34	2.33	2.30	2.29	2.27	2.27	2.26	2.31	2.34			

C Range: 0 - 360DEG
C Interval: 22.5DEG
Test Speed: HIGH
Temperature:25.3DEG
Operators:YSL
Test Date:2021-07-07

☐ Range: 0 - 180DEG
☐ Interval: 2.0DEG
Test System:EVERFINE GO-2000B_V1 SYSTEM V2.00.450
Humidity:65.0%
Test Distance:5.749m [K=1.0000]
Remarks: