



# LED NEON FLEX SPECIFICATION

IP67 NEON 0408 24V SIDE VIEW



Note: LEDYI may change product specifications and installation guidance without prior notice.

Regular power 6W/m

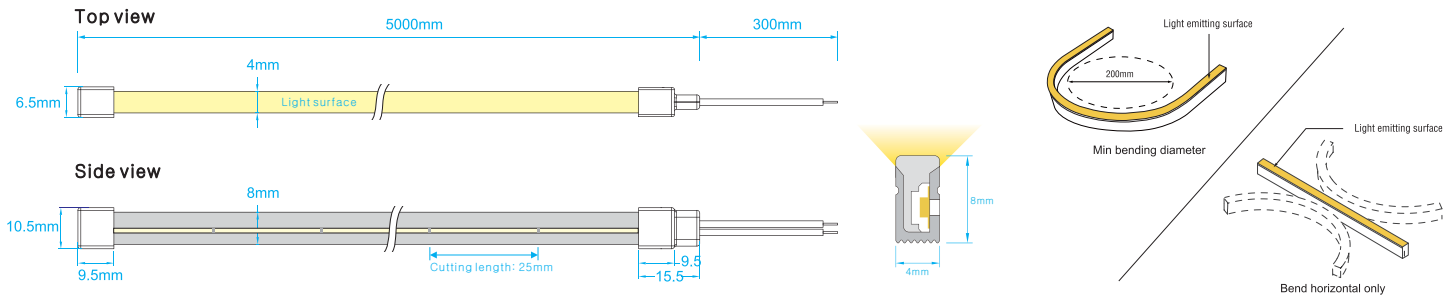
Max length 5 meters with one end power

Seven CCT optional from 2100K to 5300K

- 2100K
- 2400K
- 2800K
- 3000K
- 3500K
- 4200K
- 5300K



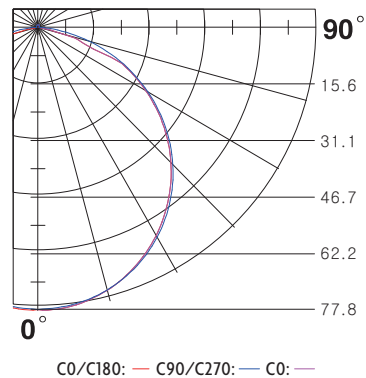
## Dimensions & Waterproof



## Product specification

Voltage	DC24 V
CRI/Ra	>90
Ambient temperature	-25°C~45°C
<b>S0408</b>	
Power(W/m)	6
Efficacy(lm/W)@3000K	42.2
Max Length(m)	5

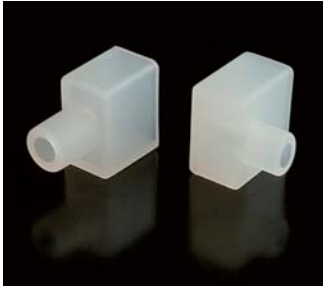
## Polar curve (The data base on 6W 3000K)



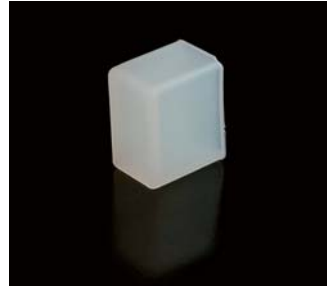
## White color parameters

Part Number	CCT (K)	Efficacy (lm/w)	Lumen (lm/m)
▶ NS-S0408-W21	2000-2300K	33.2	199
▶ NS-S0408-W24	2300-2600K	35.3	212
▶ NS-S0408-W26	2400-2800K	36.5	219
▶ NS-S0408-W30	2800-3300K	42.2	253
▶ NS-S0408-W35	3200-3900K	37.2	223
▶ NS-S0408-W42	3900-4600K	35.7	214
▶ NS-S0408-W53	5000-5700K	36.8	221

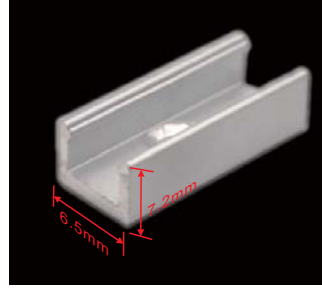
## Accessory



Endcap connector with hole



Endcap without hole

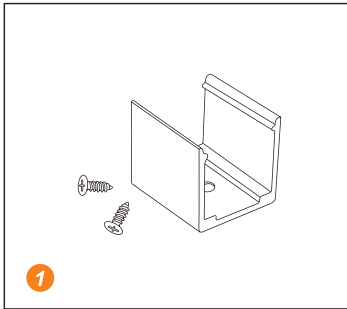


Mounting clip (length: 1.5cm)  
Mounting channel (length: 1m, 2m, 3m)

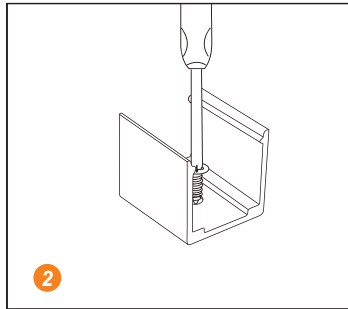


Scissors with angular scale

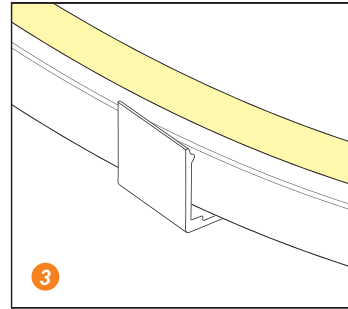
## Installation



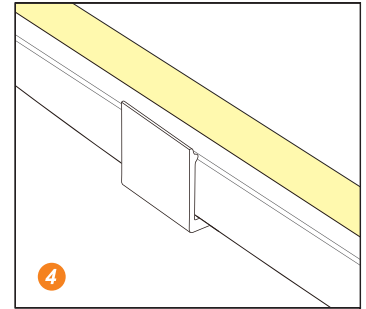
1 Prepare the screws and mounting clips



2 Adjust the fixed clips to the appropriate place, use a screwdriver to fix the screw.



3 Put the light emitting surface upwards, then insert the LED strip into the fixed clips.



4 Fix NEON strip completely into the fixed clip.