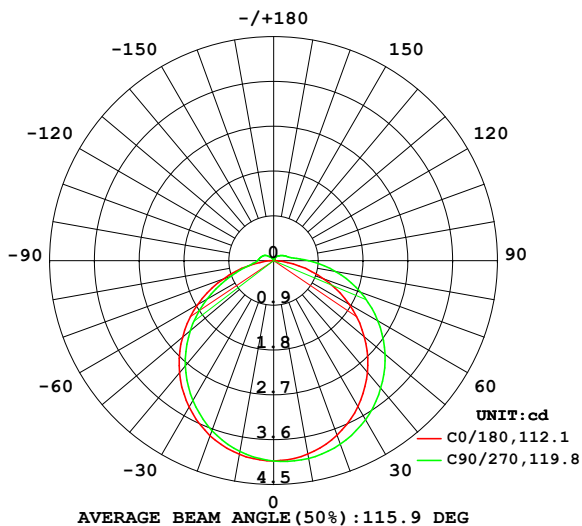


LUMINAIRE PHOTOMETRIC TEST REPORT

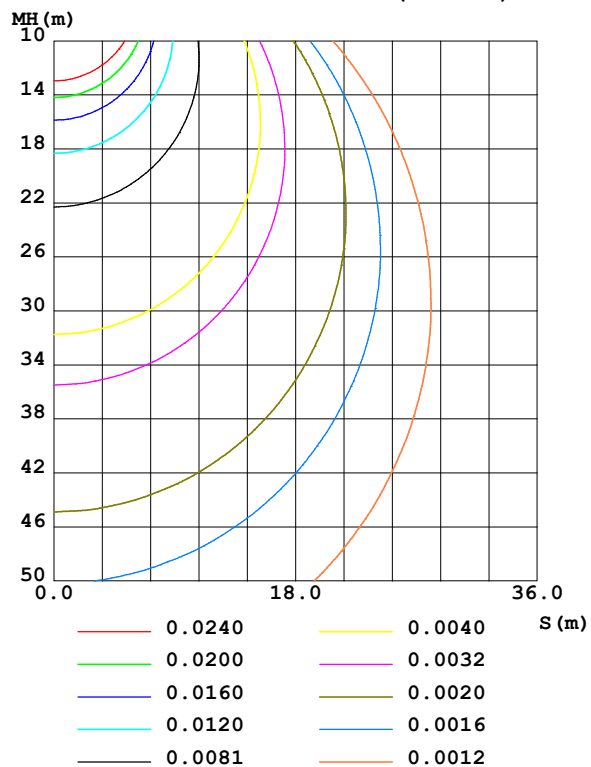
Test:U:23.998V I:0.1521A P:3.6501W PF:1.0000 Freq:0Hz Lamp Flux:0.108907x120 lm		
NAME: NS-S0612-RGB-B	TYPE:	WEIGHT:
SPEC.:	DIM.: 1*0.006*0.012MM	SERIAL No.:
MFR.:	SUR.: 0.006*1	Shielding Angle:

DATA OF LAMP		PHOTOMETRIC DATA				Eff: 3.58 lm/W
MODEL		I _{max} (cd)	4.045	S/MH (C0/180)		1.25
NOMINAL POWER(W)	3.3	LOR (%)	100.0	S/MH (C90/270)		1.21
RATED VOLTAGE(V)	24	TOTAL FLUX(lm)	13.069	□ UP, DN (C0-180)		3.2, 52.4
NOMINAL FLUX(lm)	0.108907	CIE CLASS	DIRECT	□ UP, DN (C180-360)		2.6, 41.8
LAMPS INSIDE	120	□ up (%)	5.8	CIBSE SHR NOM		1.25
TEST VOLTAGE(V)	24	□ down (%)	94.2	CIBSE SHR MAX		1.35

LUMINOUS INTENSITY DISTRIBUTION DIAGRAM



C0 PLANE ISOLUX DIAGRAM (UNIT:lx)



C Range: 0 - 360DEG
C Interval: 22.5DEG
Test Speed: HIGH
Temperature: 25.3DEG
Operators: YSL
Test Date: 2021-07-13

□ Range: 0 - 180DEG
□ Interval: 2.0DEG
Test System: EVERFINE GO-2000B_V1 SYSTEM V2.00.450
Humidity: 65.0%
Test Distance: 5.749m [K=1.0000]
Remarks:

ZONAL FLUX DIAGRAM

ZONAL FLUX DIAGRAM:

°	C0	C45	C90	C135	C180	C225	C270	C315	°	zone	total	%lum, lamp
10	3.945	4.002	4.035	4.014	3.954	3.916	3.893	3.902	0- 10	0.3810	0.3810	2.92,2.92
20	3.732	3.853	3.926	3.876	3.743	3.676	3.633	3.652	10- 20	1.094	1.475	11.3,11.3
30	3.385	3.579	3.693	3.610	3.396	3.305	3.246	3.268	20- 30	1.665	3.140	24,24
40	2.934	3.199	3.347	3.234	2.944	2.832	2.761	2.785	30- 40	2.023	5.163	39.5,39.5
50	2.383	2.736	2.924	2.769	2.391	2.262	2.188	2.209	40- 50	2.125	7.287	55.8,55.8
60	1.756	2.194	2.417	2.229	1.762	1.627	1.551	1.566	50- 60	1.960	9.248	70.8,70.8
70	1.072	1.598	1.859	1.634	1.073	0.9594	0.9143	0.8968	60- 70	1.557	10.80	82.7,82.7
80	0.4021	0.9774	1.263	1.005	0.3983	0.4060	0.4632	0.3758	70- 80	1.003	11.81	90.4,90.4
90	0.0026	0.4354	0.7064	0.4600	0.0024	0.2162	0.3255	0.2261	80- 90	0.5020	12.31	94.2,94.2
100	0	0.2116	0.3686	0.2144	0	0.1758	0.2923	0.1952	90-100	0.2547	12.56	96.1,96.1
110	0.0071	0.1593	0.2686	0.1596	0.0048	0.1568	0.2566	0.1643	100-110	0.1732	12.74	97.5,97.5
120	0.0142	0.1236	0.2092	0.1072	0.0072	0.1140	0.2162	0.0976	110-120	0.1277	12.87	98.4,98.4
130	0.0190	0.0975	0.1593	0.0786	0.0166	0.0784	0.1449	0.0595	120-130	0.0865	12.95	99.1,99.1
140	0.0285	0.0761	0.1236	0.0572	0.0214	0.0427	0.0879	0.0262	130-140	0.0526	13.00	99.5,99.5
150	0.0309	0.0428	0.0856	0.0452	0.0285	0.0285	0.0356	0.0310	140-150	0.0308	13.04	99.7,99.7
160	0.0356	0.0404	0.0642	0.0405	0.0356	0.0357	0.0333	0.0357	150-160	0.0183	13.05	99.9,99.9
170	0.0427	0.0428	0.0404	0.0428	0.0428	0.0404	0.0404	0.0405	160-170	0.0111	13.06	100,100
180	0.0475	0.0428	0.0452	0.0429	0.0475	0.0452	0.0452	0.0452	170-180	0.0040	13.07	100,100
DEG	LUMINOUS INTENSITY:cd									UNIT:lm		

Conical surface Flux(90deg): 6.4427 lm

%lum = 49.3%

%lamp = 49.3%

Conical surface Flux(120deg): 9.2479 lm

%lum = 70.8%

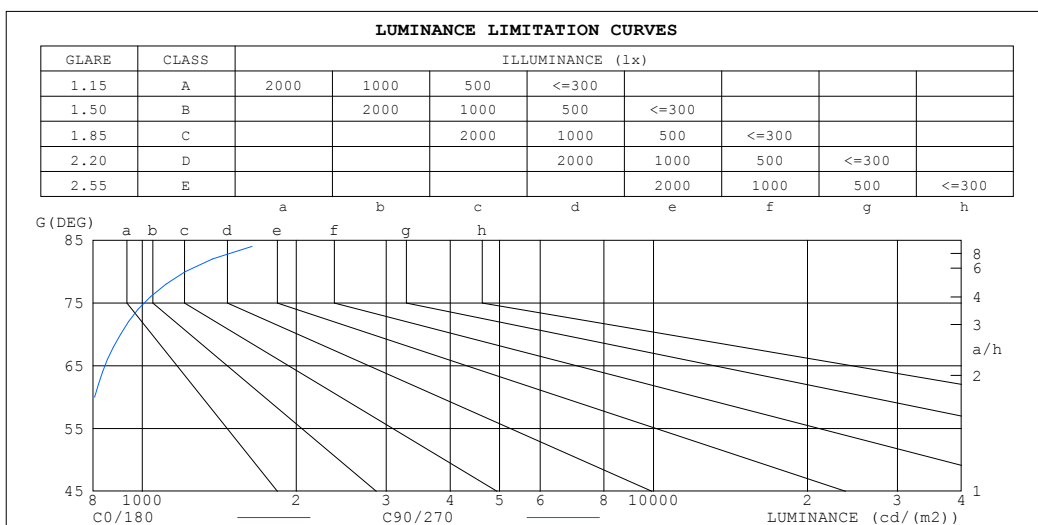
%lamp = 70.8%

C Range: 0 - 360DEG
C Interval: 22.5DEG
Test Speed: HIGH
Temperature:25.3DEG
Operators:YSL
Test Date:2021-07-13

□ Range: 0 - 180DEG
□ Interval: 2.0DEG
Test System:EVERFINE GO-2000B_V1 SYSTEM V2.00.450
Humidity:65.0%
Test Distance:5.749m [K=1.0000]
Remarks:

LUMINANCE LIMITATION CURVES

Test:U:23.998V I:0.1521A P:3.6501W PF:1.0000 Freq:0Hz Lamp Flux:0.108907x120 lm		
NAME: NS-S0612-RGB-B	TYPE:	WEIGHT:
SPEC.:	DIM.: 1*0.006*0.012MM	SERIAL No.:
MFR.:	SUR.: 0.006*1	Shielding Angle:



LUMINANCE cd/(m2)		
G (DEG)	C0/180	C90/270
85	342	1966
80	386	1213
75	512	1045
70	523	906
65	588	868
60	586	806
55	622	793
50	619	759
45	642	752

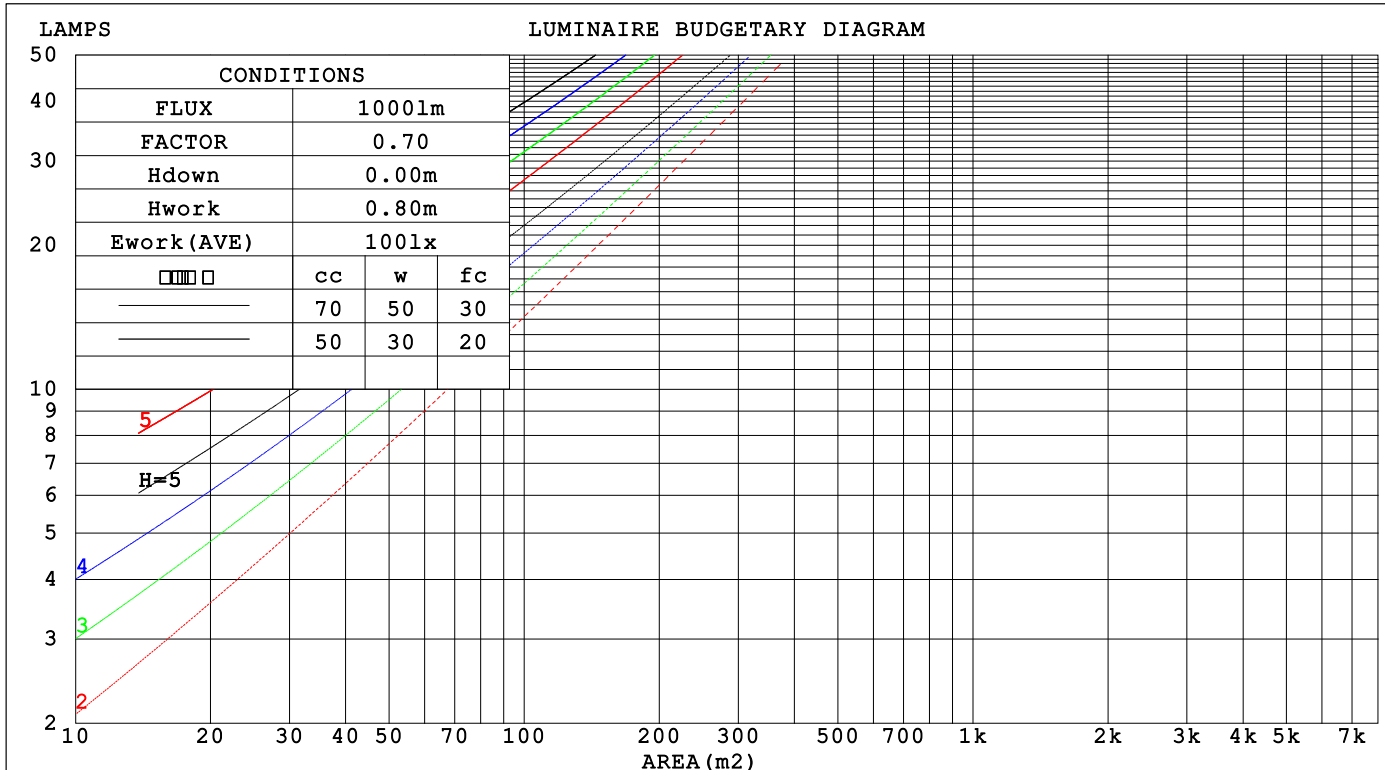
C Range: 0 - 360DEG
C Interval: 22.5DEG
Test Speed: HIGH
Temperature:25.3DEG
Operators:YSL
Test Date:2021-07-13

☐ Range: 0 - 180DEG
☐ Interval: 2.0DEG
Test System:EVERFINE GO-2000B_V1 SYSTEM V2.00.450
Humidity:65.0%
Test Distance:5.749m [K=1.0000]
Remarks:

CU AND LUMINAIRE BUDGETARY ESTIMATE DIAGRAM

Test:U:23.998V I:0.1521A P:3.6501W PF:1.0000 Freq:0Hz		
Lamp Flux:0.108907x120 lm		
NAME: NS-S0612-RGB-B	TYPE:	WEIGHT:
SPEC.:	DIM.: 1*0.006*0.012MM	SERIAL No.:
MFR.:	SUR.: 0.006*1	Shielding Angle:

□cc	80%			70%			50%			30%			10%			0
□w	50%	30%	10%	50%	30%	10%	50%	30%	10%	50%	30%	10%	50%	30%	10%	0
□fc	20%			20%			20%			20%			20%			0
RCR	RCR:Room Cavity Ratio															



C Range: 0 - 360DEG
C Interval: 22.5DEG
Test Speed: HIGH
Temperature:25.3DEG
Operators:YSL
Test Date:2021-07-13

□ Range: 0 - 180DEG
□ Interval: 2.0DEG
Test System:EVERFINE GO-2000B_V1 SYSTEM V2.00.450
Humidity:65.0%
Test Distance:5.749m [K=1.0000]
Remarks:

WEC AND CCEC

Test:U:23.998V I:0.1521A P:3.6501W PF:1.0000 Freq:0Hz Lamp Flux:0.108907x120 lm		
NAME: NS-S0612-RGB-B	TYPE:	WEIGHT:
SPEC.:	DIM.: 1*0.006*0.012MM	SERIAL No.:
MFR.:	SUR.: 0.006*1	Shielding Angle:

<input type="checkbox"/> cc	80%	70%	50%	30%	10%	0
<input type="checkbox"/> w	50% 30% 10%	50% 30% 10%	50% 30% 10%	50% 30% 10%	50% 30% 10%	0
<input type="checkbox"/> fc	20%	20%	20%	20%	20%	0
RCR	RCR:Room Cavity Ratio					Wall Exitance Coefficients(WEC)
0.0						
1.0	.335 .190 .060	.326 .186 .059	.309 .177 .057	.294 .170 .054	.280 .162 .052	
2.0	.305 .167 .051	.297 .164 .050	.282 .157 .049	.269 .151 .047	.256 .145 .046	
3.0	.278 .148 .044	.271 .145 .044	.258 .140 .042	.246 .135 .041	.234 .130 .040	
4.0	.255 .132 .039	.248 .130 .038	.237 .125 .037	.225 .121 .037	.215 .117 .036	
5.0	.234 .119 .035	.229 .117 .034	.218 .113 .033	.208 .110 .033	.199 .106 .032	
6.0	.216 .108 .031	.211 .107 .031	.202 .103 .030	.193 .100 .029	.184 .097 .029	
7.0	.201 .099 .028	.196 .098 .028	.187 .095 .027	.179 .092 .027	.172 .089 .026	
8.0	.187 .091 .026	.183 .090 .025	.175 .087 .025	.168 .085 .024	.161 .082 .024	
9.0	.175 .085 .024	.171 .083 .023	.164 .081 .023	.157 .079 .023	.151 .077 .022	
10.0	.164 .079 .022	.161 .078 .022	.154 .076 .021	.148 .074 .021	.142 .072 .021	

<input type="checkbox"/> cc	80%	70%	50%	30%	10%	0
<input type="checkbox"/> w	50% 30% 10%	50% 30% 10%	50% 30% 10%	50% 30% 10%	50% 30% 10%	0
<input type="checkbox"/> fc	20%	20%	20%	20%	20%	0
RCR	RCR:Room Cavity Ratio					Ceiling Cavity Exitance Coefficients(CCEC)
0.0	.235 .235 .235	.201 .201 .201	.137 .137 .137	.079 .079 .079	.025 .025 .025	
1.0	.227 .201 .177	.194 .172 .152	.133 .118 .105	.076 .069 .061	.024 .022 .020	
2.0	.219 .177 .141	.188 .152 .122	.129 .105 .085	.074 .061 .050	.024 .020 .016	
3.0	.211 .160 .118	.181 .138 .103	.124 .096 .072	.072 .056 .042	.023 .018 .014	
4.0	.204 .146 .103	.175 .127 .089	.120 .088 .063	.069 .052 .037	.022 .017 .012	
5.0	.196 .136 .092	.168 .118 .080	.116 .082 .057	.067 .048 .034	.022 .016 .011	
6.0	.189 .128 .084	.162 .111 .074	.112 .078 .052	.065 .046 .031	.021 .015 .010	
7.0	.182 .121 .079	.156 .105 .069	.108 .074 .049	.063 .043 .029	.020 .014 .010	
8.0	.175 .115 .074	.151 .100 .065	.104 .070 .046	.061 .041 .027	.020 .014 .009	
9.0	.169 .111 .071	.146 .096 .062	.101 .067 .044	.059 .040 .026	.019 .013 .009	
10.0	.163 .106 .068	.141 .092 .060	.098 .065 .042	.057 .038 .025	.018 .013 .008	

C Range: 0 - 360DEG
C Interval: 22.5DEG
Test Speed: HIGH
Temperature:25.3DEG
Operators:YSL
Test Date:2021-07-13

☐ Range: 0 - 180DEG
☐ Interval: 2.0DEG
Test System:EVERFINE GO-2000B_V1 SYSTEM V2.00.450
Humidity:65.0%
Test Distance:5.749m [K=1.0000]
Remarks:

UGR(Unified Glare Rating) Table

Test:U:23.998V I:0.1521A P:3.6501W PF:1.0000 Freq:0Hz Lamp Flux:0.108907x120 lm										
NAME: NS-S0612-RGB-B					TYPE:			WEIGHT:		
SPEC.:					DIM.: 1*0.006*0.012MM			SERIAL No.:		
MFR.:					SUR.: 0.006*1			Shielding Angle:		
ceiling/cavity	0.7	0.7	0.5	0.5	0.3	0.7	0.7	0.5	0.5	0.3
walls	0.5	0.3	0.5	0.3	0.3	0.5	0.3	0.5	0.3	0.3
working plane	0.2	0.2	0.2	0.2	0.2	0.2	0.2	0.2	0.2	0.2
Room dimensions	Viewed crosswise					Viewed endwise				
x = 2H y = 2H	26.2	27.7	26.5	28.0	28.3	27.4	28.8	27.7	29.1	29.5
3H	27.7	29.1	28.1	29.4	29.8	29.5	30.9	29.9	31.2	31.6
4H	28.3	29.6	28.7	29.9	30.3	30.6	31.9	31.0	32.3	32.7
6H	28.7	29.9	29.1	30.3	30.7	31.7	33.0	32.2	33.3	33.7
8H	28.8	29.9	29.2	30.3	30.7	32.3	33.5	32.7	33.9	34.3
12H	28.8	29.9	29.2	30.3	30.7	32.9	34.0	33.3	34.4	34.9
4H 2H	27.1	28.4	27.5	28.8	29.1	28.0	29.3	28.4	29.6	30.0
3H	28.9	30.0	29.3	30.4	30.8	30.4	31.5	30.8	31.9	32.3
4H	29.6	30.7	30.1	31.1	31.5	31.6	32.7	32.1	33.1	33.6
6H	30.2	31.1	30.6	31.5	32.0	32.9	33.9	33.4	34.3	34.8
8H	30.3	31.2	30.8	31.6	32.2	33.6	34.5	34.1	34.9	35.5
12H	30.4	31.2	30.9	31.7	32.2	34.3	35.1	34.8	35.6	36.1
8H 4H	30.3	31.1	30.8	31.6	32.1	32.0	32.8	32.5	33.3	33.8
6H	31.1	31.8	31.6	32.3	32.9	33.5	34.2	34.0	34.7	35.3
8H	31.4	32.0	31.9	32.6	33.1	34.4	35.0	34.9	35.5	36.1
12H	31.6	32.1	32.2	32.7	33.3	35.3	35.9	35.9	36.4	37.0
12H 4H	30.4	31.2	30.9	31.7	32.2	32.0	32.8	32.5	33.3	33.8
6H	31.4	32.0	31.9	32.5	33.1	33.6	34.2	34.2	34.8	35.3
8H	31.8	32.3	32.4	32.9	33.5	34.5	35.1	35.1	35.6	36.2
Variations with the observer position at spacings(CIE Pub.117):										
S = 1.0H	+ 0.1 / - 0.2					+ 0.1 / - 0.1				
1.5H	+ 0.2 / - 0.3					+ 0.2 / - 0.3				
2.0H	+ 0.2 / - 0.5					+ 0.2 / - 0.3				

CIE Pub.117, 13.07 lm Total Lamp Luminous Flux Correct (8log(F/F0) = -15.1)
Area: 0.006 m2

C Range: 0 - 360DEG
C Interval: 22.5DEG
Test Speed: HIGH
Temperature:25.3DEG
Operators:YSL
Test Date:2021-07-13

☐ Range: 0 - 180DEG
☐ Interval: 2.0DEG
Test System:EVERFINE GO-2000B_V1 SYSTEM V2.00.450
Humidity:65.0%
Test Distance:5.749m [K=1.0000]
Remarks:

UTILIZATION FACTORS TABLE

Test:U:23.998V I:0.1521A P:3.6501W PF:1.0000 Freq:0Hz Lamp Flux:0.108907x120 lm		
NAME: NS-S0612-RGB-B	TYPE:	WEIGHT:
SPEC.:	DIM.: 1*0.006*0.012MM	SERIAL No.:
MFR.:	SUR.: 0.006*1	Shielding Angle:

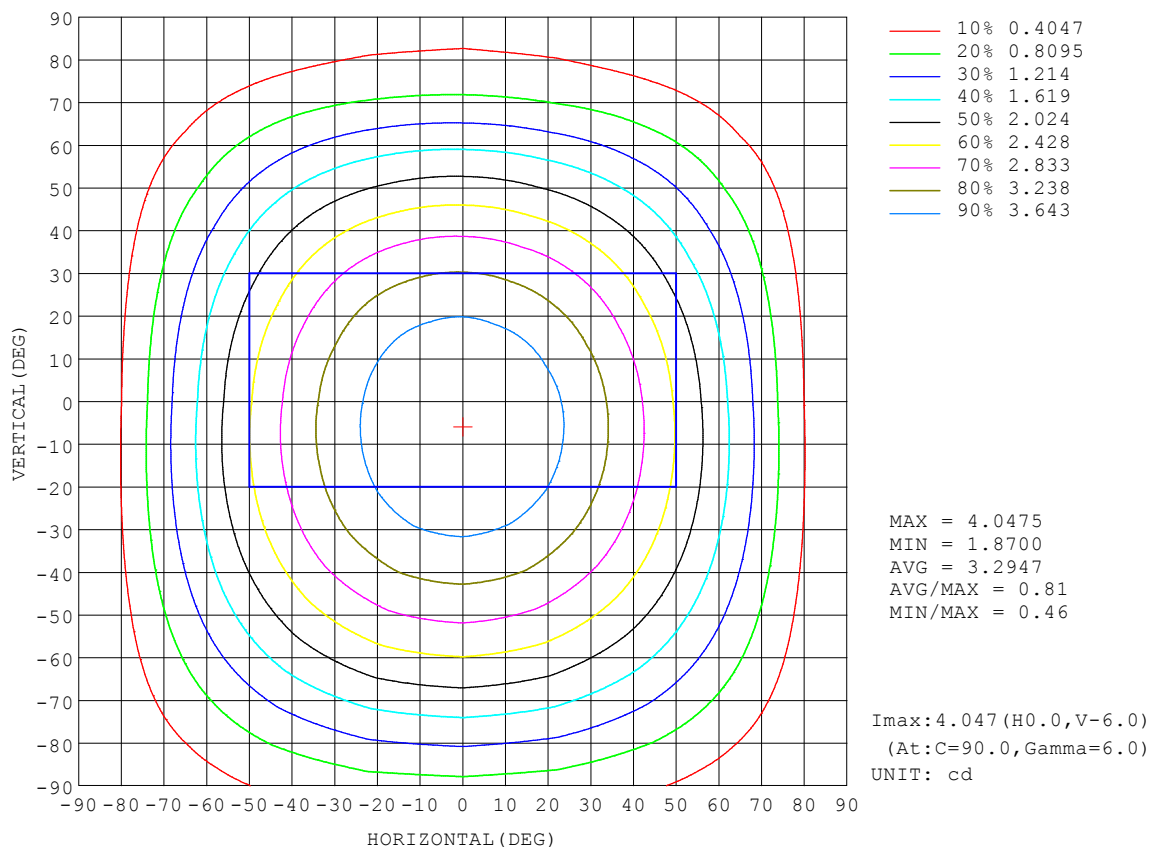
REFLECTANCE										
Ceiling	0.8	0.8	0.8	0.7	0.7	0.7	0.5	0.5	0.5	0
Walls	0.7	0.5	0.3	0.7	0.5	0.3	0.7	0.5	0.3	0
Working plane	0.2	0.2	0.2	0.2	0.2	0.2	0.2	0.2	0.2	0
ROOM INDEX	UTILIZATION FACTORS (PERCENT) $k(RI) \times RCR = 5$									
$k = 0.60$	54	42	35	53	42	35	52	42	35	28
0.80	64	52	44	63	52	44	61	51	44	36
1.00	72	61	53	71	60	53	68	61	52	44
1.25	79	68	61	78	67	60	74	65	59	51
1.50	84	74	66	82	73	66	79	70	64	56
2.00	91	82	75	89	81	74	85	78	72	63
2.50	95	87	80	93	85	79	88	82	77	67
3.00	99	91	85	96	89	84	91	86	81	71
4.00	103	97	91	100	95	90	95	90	86	76
5.00	106	100	96	103	98	94	97	93	90	79
ROOM INDEX	UF (total)									Direct
According to DIN EN 13032-2 2004			Suspended					SHRNOM = 1.25		

C Range: 0 - 360DEG
C Interval: 22.5DEG
Test Speed: HIGH
Temperature:25.3DEG
Operators:YSL
Test Date:2021-07-13

☐ Range: 0 - 180DEG
☐ Interval: 2.0DEG
Test System:EVERFINE GO-2000B_V1 SYSTEM V2.00.450
Humidity:65.0%
Test Distance:5.749m [K=1.0000]
Remarks:

ISOCANDELA DIAGRAM

Test:U:23.998V I:0.1521A P:3.6501W PF:1.0000 Freq:0Hz Lamp Flux:0.108907x120 lm		
NAME: NS-S0612-RGB-B	TYPE:	WEIGHT:
SPEC.:	DIM.: 1*0.006*0.012MM	SERIAL No.:
MFR.:	SUR.: 0.006*1	Shielding Angle:

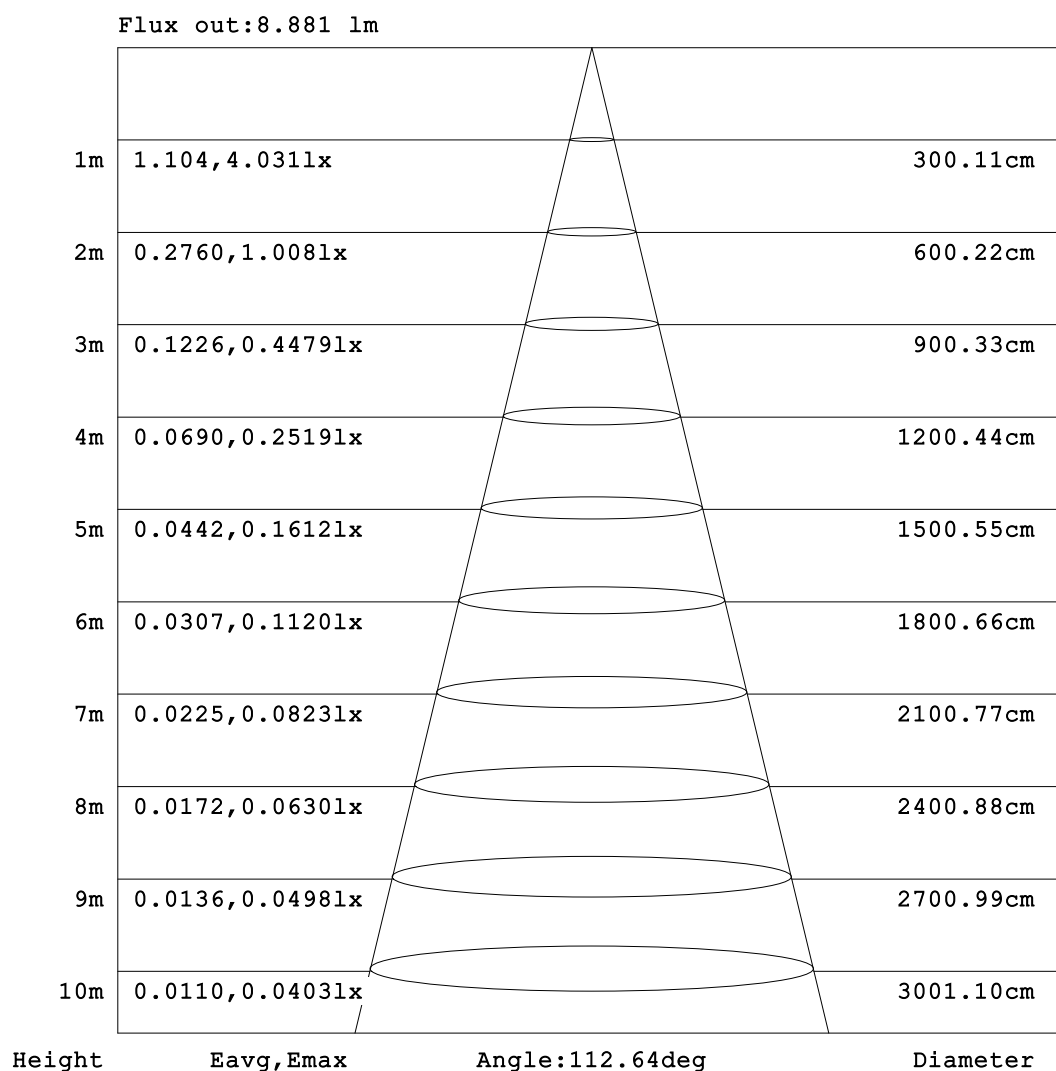


C Range: 0 - 360DEG
C Interval: 22.5DEG
Test Speed: HIGH
Temperature: 25.3DEG
Operators: YSL
Test Date: 2021-07-13

☐ Range: 0 - 180DEG
☐ Interval: 2.0DEG
Test System: EVERFINE GO-2000B_V1 SYSTEM V2.00.450
Humidity: 65.0%
Test Distance: 5.749m [K=1.0000]
Remarks:

AAI Figure

Test:U:23.998V I:0.1521A P:3.6501W PF:1.0000 Freq:0Hz Lamp Flux:0.108907x120 lm		
NAME: NS-S0612-RGB-B	TYPE:	WEIGHT:
SPEC.:	DIM.: 1*0.006*0.012MM	SERIAL No.:
MFR.:	SUR.: 0.006*1	Shielding Angle:



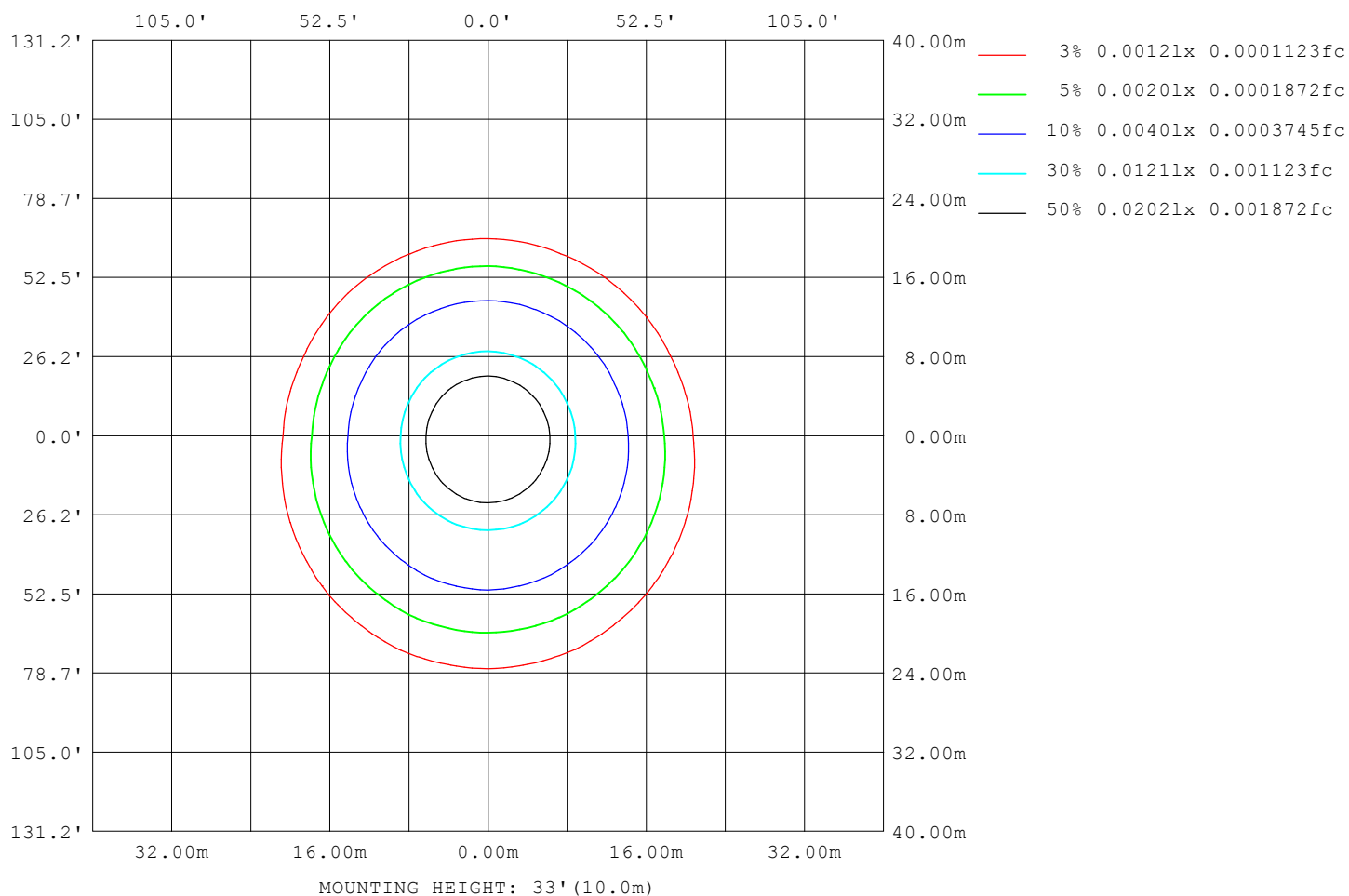
Note:The Curves indicate the illuminated area and the average illumination when the luminaire is at different distance.

C Range: 0 - 360DEG
C Interval: 22.5DEG
Test Speed: HIGH
Temperature:25.3DEG
Operators:YSL
Test Date:2021-07-13

☐ Range: 0 - 180DEG
☐ Interval: 2.0DEG
Test System:EVERFINE GO-2000B_V1 SYSTEM V2.00.450
Humidity:65.0%
Test Distance:5.749m [K=1.0000]
Remarks:

ISOLUX DIAGRAM

Test:U:23.998V I:0.1521A P:3.6501W PF:1.0000 Freq:0Hz Lamp Flux:0.108907x120 lm		
NAME: NS-S0612-RGB-B	TYPE:	WEIGHT:
SPEC.:	DIM.: 1*0.006*0.012MM	SERIAL No.:
MFR.:	SUR.: 0.006*1	Shielding Angle:



C Range: 0 - 360DEG
C Interval: 22.5DEG
Test Speed: HIGH
Temperature:25.3DEG
Operators:YSL
Test Date:2021-07-13

☐ Range: 0 - 180DEG
☐ Interval: 2.0DEG
Test System:EVERFINE GO-2000B_V1 SYSTEM V2.00.450
Humidity:65.0%
Test Distance:5.749m [K=1.0000]
Remarks:

LED Avg.L Report

Test:U:23.998V I:0.1521A P:3.6501W PF:1.0000 Freq:0Hz Lamp Flux:0.108907x120 lm		
NAME: NS-S0612-RGB-B	TYPE:	WEIGHT:
SPEC.:	DIM.: 1*0.006*0.012MM	SERIAL No.:
MFR.:	SUR.: 0.006*1	Shielding Angle:

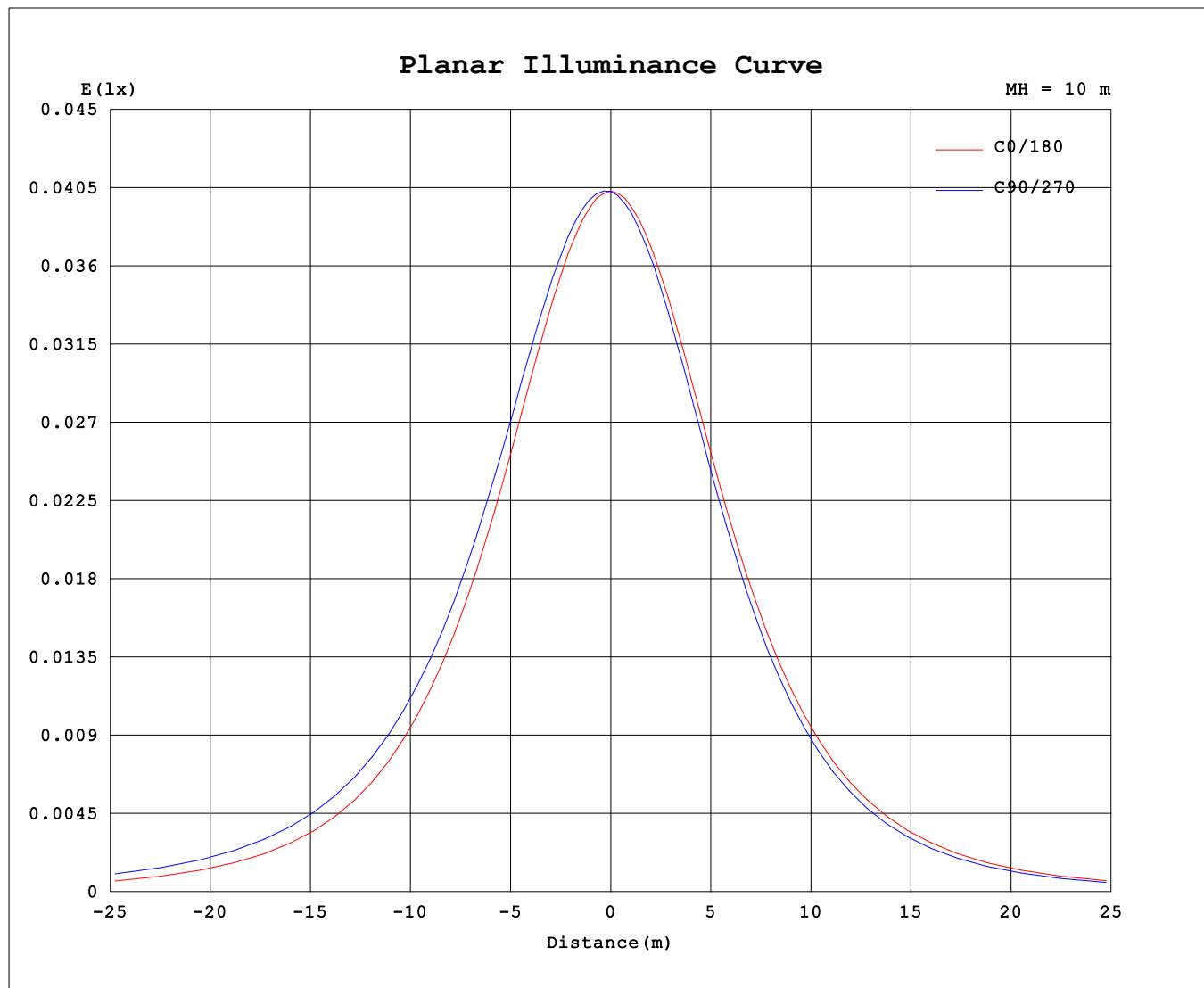
AvgL	cd/m2
L_0~180 (65) av	560
L_0~180 (75) av	470
L_0~180 (85) av	253
L_90~270 (65) av	664
L_90~270 (75) av	713
L_90~270 (85) av	1275
L_45 (65) av	627
L_45 (75) av	622
L_45 (85) av	920

Standard: GB/T 29293-2012

C Range: 0 - 360DEG
C Interval: 22.5DEG
Test Speed: HIGH
Temperature:25.3DEG
Operators:YSL
Test Date:2021-07-13

☐ Range: 0 - 180DEG
☐ Interval: 2.0DEG
Test System:EVERFINE GO-2000B_V1 SYSTEM V2.00.450
Humidity:65.0%
Test Distance:5.749m [K=1.0000]
Remarks:

Planar Illuminance Curve



C Range: 0 - 360DEG
 C Interval: 22.5DEG
 Test Speed: HIGH
 Temperature: 25.3DEG
 Operators: YSL
 Test Date: 2021-07-13

☐ Range: 0 - 180DEG
☐ Interval: 2.0DEG
 Test System: EVERFINE GO-2000B_V1 SYSTEM V2.00.450
 Humidity: 65.0%
 Test Distance: 5.749m [K=1.0000]
 Remarks:

LUMINOUS DISTRIBUTION INTENSITY DATA

Test:U:23.998V I:0.1521A P:3.6501W PF:1.0000 Freq:0Hz Lamp Flux:0.108907x120 lm																	
NAME: NS-S0612-RGB-B									TYPE:						WEIGHT:		
SPEC.:									DIM.: 1*0.006*0.012MM						SERIAL No.:		
MFR.:									SUR.: 0.006*1						Shielding Angle:		

Table--1

UNIT: cd

C (DEG) □ (DEG)	0	22.5	45	67.5	90	112.5	135	157.5	180	202.5	225	247.5	270	292.5	315	337.5			
0	4.03	4.03	4.03	4.03	4.03	4.03	4.03	4.03	4.03	4.03	4.03	4.03	4.03	4.03	4.03	4.03			
5	4.01	4.02	4.03	4.04	4.04	4.04	4.04	4.03	4.01	4.01	4.00	3.99	3.99	3.98	3.99	4.00			
10	3.95	3.98	4.00	4.02	4.04	4.04	4.01	3.99	3.95	3.93	3.92	3.90	3.89	3.89	3.90	3.92			
15	3.88	3.92	3.96	3.99	4.00	4.00	3.97	3.93	3.88	3.86	3.84	3.82	3.80	3.80	3.82	3.84			
20	3.73	3.79	3.85	3.90	3.93	3.92	3.88	3.81	3.74	3.70	3.68	3.64	3.63	3.62	3.65	3.69			
25	3.61	3.69	3.76	3.82	3.85	3.84	3.79	3.70	3.62	3.57	3.55	3.51	3.49	3.48	3.51	3.55			
30	3.38	3.49	3.58	3.66	3.69	3.68	3.61	3.50	3.40	3.34	3.31	3.27	3.25	3.24	3.27	3.31			
35	3.22	3.33	3.44	3.53	3.57	3.55	3.47	3.35	3.23	3.17	3.13	3.09	3.06	3.05	3.09	3.14			
40	2.93	3.07	3.20	3.30	3.35	3.33	3.23	3.09	2.94	2.87	2.83	2.79	2.76	2.74	2.78	2.84			
45	2.72	2.88	3.02	3.15	3.19	3.17	3.06	2.90	2.73	2.65	2.61	2.57	2.54	2.53	2.56	2.62			
50	2.38	2.57	2.74	2.87	2.92	2.89	2.77	2.59	2.39	2.30	2.26	2.21	2.19	2.17	2.21	2.27			
55	2.14	2.34	2.53	2.67	2.73	2.70	2.56	2.36	2.15	2.05	2.02	1.97	1.94	1.92	1.96	2.01			
60	1.76	1.98	2.19	2.36	2.42	2.38	2.23	2.01	1.76	1.66	1.63	1.58	1.55	1.53	1.57	1.62			
65	1.49	1.74	1.96	2.13	2.20	2.16	2.00	1.76	1.49	1.39	1.36	1.32	1.29	1.27	1.30	1.35			
70	1.07	1.35	1.60	1.79	1.86	1.81	1.63	1.37	1.07	0.98	0.96	0.93	0.91	0.89	0.90	0.94			
75	0.79	1.08	1.35	1.55	1.62	1.58	1.39	1.10	0.80	0.71	0.71	0.70	0.70	0.67	0.66	0.68			
80	0.40	0.70	0.98	1.19	1.26	1.21	1.01	0.71	0.40	0.35	0.41	0.45	0.46	0.43	0.38	0.33			
85	0.18	0.46	0.74	0.95	1.03	0.97	0.77	0.48	0.18	0.18	0.28	0.36	0.38	0.35	0.28	0.18			
90	0.00	0.18	0.44	0.64	0.71	0.66	0.46	0.20	0.00	0.10	0.22	0.30	0.33	0.30	0.23	0.11			
95	0.00	0.10	0.30	0.47	0.54	0.49	0.32	0.12	0.00	0.09	0.20	0.28	0.31	0.28	0.21	0.10			
100	0.00	0.08	0.21	0.33	0.37	0.34	0.21	0.08	0.00	0.08	0.18	0.26	0.29	0.27	0.20	0.09			
105	0.00	0.07	0.19	0.28	0.31	0.29	0.18	0.07	0.00	0.07	0.17	0.25	0.28	0.25	0.18	0.07			
110	0.01	0.06	0.16	0.24	0.27	0.24	0.16	0.06	0.00	0.05	0.16	0.22	0.26	0.23	0.16	0.04			
115	0.01	0.05	0.14	0.22	0.24	0.22	0.14	0.05	0.01	0.05	0.14	0.21	0.24	0.22	0.15	0.03			
120	0.01	0.05	0.12	0.19	0.21	0.18	0.11	0.05	0.01	0.03	0.11	0.19	0.22	0.19	0.10	0.02			
125	0.02	0.05	0.11	0.17	0.19	0.16	0.09	0.04	0.01	0.03	0.10	0.17	0.19	0.16	0.08	0.02			
130	0.02	0.04	0.10	0.14	0.16	0.13	0.08	0.04	0.02	0.02	0.08	0.13	0.14	0.11	0.06	0.02			
135	0.02	0.04	0.09	0.13	0.14	0.11	0.07	0.04	0.02	0.02	0.06	0.11	0.11	0.10	0.04	0.02			
140	0.03	0.03	0.08	0.10	0.12	0.09	0.06	0.03	0.02	0.02	0.04	0.07	0.09	0.07	0.03	0.03			
145	0.03	0.03	0.07	0.10	0.10	0.07	0.05	0.03	0.03	0.02	0.03	0.06	0.07	0.05	0.03	0.03			
150	0.03	0.03	0.04	0.08	0.09	0.06	0.05	0.03	0.03	0.03	0.03	0.04	0.04	0.03	0.03	0.03			
155	0.03	0.03	0.04	0.07	0.07	0.05	0.04	0.04	0.03	0.03	0.03	0.03	0.03	0.03	0.03	0.03			
160	0.04	0.04	0.04	0.04	0.06	0.04	0.04	0.04	0.04	0.04	0.04	0.03	0.03	0.04	0.04	0.04			
165	0.04	0.04	0.04	0.04	0.05	0.04	0.04	0.04	0.04	0.04	0.04	0.04	0.04	0.04	0.04	0.04			
170	0.04	0.04	0.04	0.04	0.04	0.04	0.04	0.04	0.04	0.04	0.04	0.04	0.04	0.04	0.04	0.04			
175	0.04	0.04	0.04	0.04	0.04	0.04	0.04	0.05	0.04	0.04	0.04	0.04	0.04	0.04	0.04	0.04			
180	0.05	0.05	0.04	0.04	0.05	0.04	0.04	0.05	0.05	0.04	0.05	0.05	0.05	0.05	0.05	0.05			

C Range: 0 - 360DEG
C Interval: 22.5DEG
Test Speed: HIGH
Temperature:25.3DEG
Operators:YSL
Test Date:2021-07-13

☐ Range: 0 - 180DEG
☐ Interval: 2.0DEG
Test System:EVERFINE GO-2000B_V1 SYSTEM V2.00.450
Humidity:65.0%
Test Distance:5.749m [K=1.0000]
Remarks: